



**GREEN LION**



**Green Lion**

**ASEEL  
Bakhour Burner**

SKU: GNASLBAKHSL

Model No: GBR-36

## Table of Contents

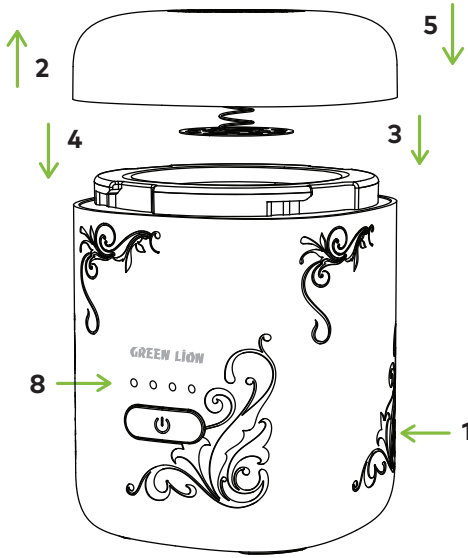
Important Warnings	2
Quick Start Guide	3
Product Overview	4
Usage Safety Guide	5
Placing the Increase	6
Operating Device	7
Power Indicator	8
Maintenance	8
Storage	9
Battery Disposal	10
Disclaimer	10
Warranty	12
Contact Us	12

Thank you for choosing this product.  
Please read this manual carefully before use.

## Important Warnings

1. Avoid exposing the device to direct sunlight or temperatures higher than 45°C, and do not leave the device inside a car.
2. Do not use or store the device near water, fire, or any sources of high temperatures.
3. Avoid dropping the device or subjecting it to strong impacts, as this may damage the device or its internal components.
4. Do not attempt to disassemble or repair the device by yourself.
5. Only use the charging cable that comes with the device.
6. Keep the device away from children to avoid accidents or injuries.
7. When not in use for a long period, store the device in a cool, dry place.
8. Clean the device using a soft, dry cloth. Do not use any chemical cleaners or solvents.
9. If you experience any abnormalities such as smoke, unusual smell, or abnormal sound, stop using the device immediately and contact the seller.
10. Do not use the device while it is charging.
11. Avoid using the device if it is damaged or broken.
12. Do not put the device in the washing machine or expose it to strong water pressure.
13. Do not try to open the device because the warranty will be void, and you may cause permanent damage.

## Quick Start Guide



1. Fully charge the product before using it for the first time.
2. Open the vent (air outlet cover) in the upper part of the device.
3. Place the incense.
4. Close the vent.
5. Press the power button twice to turn on/off.
6. Wait 3 seconds for the smoke to appear.
7. The light will turn green when ready.
8. The power indicator will be displayed.

### To turn off the device:

Press and hold the power button for two seconds while in operating mode.

### Protection mode:

(1) After 120 seconds of continuous operation, the product will automatically enter the cooling system for 30 seconds.

## Note:

If there is a red light in the middle of the device and it stays red after use, this means that the product has a different battery or that the battery is defective and must be replaced or fixed.

The company is not responsible for any damages that may result from misuse of the device or if you use an incompatible charger.

## Product Overview

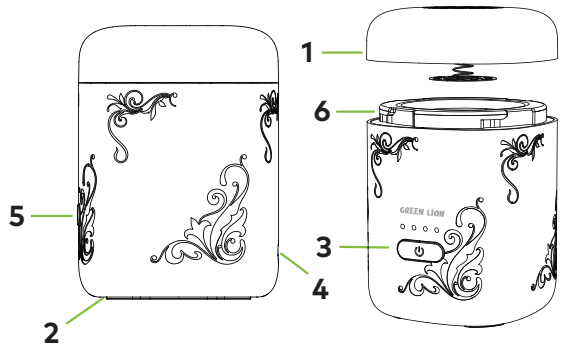
This device is a portable incense burner, elegant and high-quality. Place incense chips inside the chamber, which heats using the same temperature as charcoal (400–450°C). Since the device does not use a complicated combustion substance, the incense smoke retains its original, high-quality fragrance. Using this device is faster and easier than traditional methods, while still maintaining the quality aroma of traditional charcoal incense.

### Box Contents

- Incense burner device
- Small USB cable
- Small clamp
- Brush
- Mesh sheet

### Device Components

1. Air outlet
2. Air inlet
3. Light indicator
4. Small USB charger
5. Power and unlock button
6. Incense chamber



## Usage Safety Guide

### **1.Incense Chamber Caution:**

The incense chamber may remain hot after use. Do not touch any part of the incense, the incense chamber, or the device itself with your hands.

### **2.Vent Direction:**

Make sure the vent is directed away from your face and body.

### **3.Safe Surface:**

Place the device on a stable and flat surface at least 20 cm away from your body, curtains, or any flammable materials.

### **4.Child and Pet Safety:**

Keep the device out of reach of children and pets.

### **5.Cooling System:**

The product will automatically activate the cooling system for 30 seconds after 120 seconds of continuous use. Do not open the cover until it is cooled.

### **6.Do Not Clean While Hot:**

Do not clean the incense chamber with anything until it has completely cooled, with a minimum of 30 seconds after last use, as it may still retain heat or residual incense.

### **7.Use Fresh Incense:**

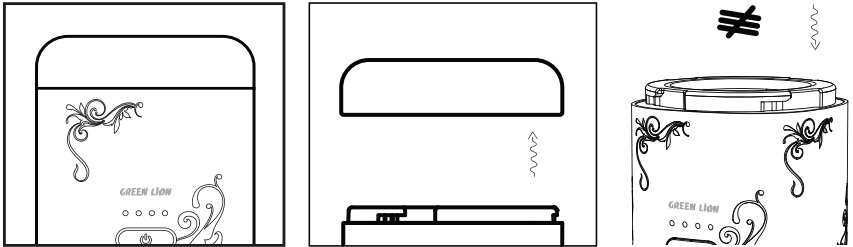
Always refill the product with new incense for each use. Do not use the same incense pieces more than once.

## Warning:

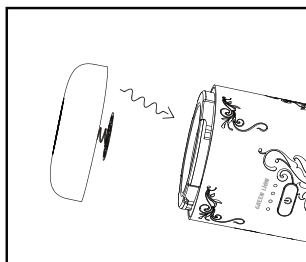
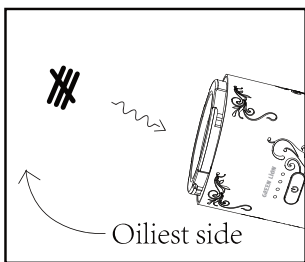
Failure to follow these instructions will void the warranty and may result in serious or permanent damage to the battery or the product, or, in the worst cases, cause personal injury or fire.

## Placing the Incense

1. Make sure the device is turned off and completely cool before placing the incense.
2. Open the air outlet cover.
3. Remove the incense chamber cover from the device, which prevents the incense from moving and provides a pure aroma.



4. Place the incense piece in the center of the chamber. For better results, place the oiliest side of the incense facing upwards.  
-If using a round incense piece, place it in the center of the chamber and ensure the most aromatic (oiliest) side is facing up.  
-After closing the incense chamber, close the air outlet cover, and after closing, wait a few seconds for the smoke to start appearing.
5. For easy removal, gently push the incense chamber cover upward to remove the chamber.



## Operating the Device

1. Move the safety lock to the right to unlock the device and turn it on.
2. Press and hold the power button for two seconds to turn the device on/off.
3. The device will start working after following the instructions (wait for 3 seconds, or stop by pressing the button twice).

### **Automatic Cooling**

After 120 seconds of use, the device will automatically activate the cooling system for 30 seconds, during which the heating element will stop operating and the fan will continue the cooling process.

This is a necessary step to protect the device. If the internal temperature of the device or the burning chamber is very high, the device will continue to cool until it returns to a safe temperature.

During cooling, do not open the air outlet cover or attempt to remove any parts of the device.

### **Warning:**

Avoid using the device on unstable surfaces or near flammable materials during the cooling process.

The cooling system may operate in a different manner when used frequently or continuously.

## Power Indicator

- A.** If the indicator light is blue and constantly on, this means the battery is fully charged and the device is operational.
- B.** If the indicator light flashes blue once every 3 seconds, this means the battery is at 75%.
- C.** If the indicator light flashes orange once every 3 seconds, this means the battery is at 50%.
- D.** If the indicator light flashes red once every 3 seconds, this means the battery is at 25%.
- E.** If the indicator light flashes red quickly 5 times, the battery is almost empty and needs to be charged immediately. During charging, the indicator light will turn red and will remain on until charging is complete.
- F.** If the battery is not installed correctly, or if there is a battery issue, the indicator light will flash red and blue alternately, and the device will not operate.
- G.** The indicator light may also turn off automatically when the device is not in use or when placed in standby mode, while the device itself is operating and displaying other indicators.

## Maintenance

- 1.** Before cleaning the device, always disconnect the safety lock to turn off the device.
- 2.** Do not clean the device with water or place it in the washing machine, as this may cause permanent damage to the device.
- 3.** Do not use chemical detergents inside or outside the device, as they may leave residues in the incense chamber.
- 4.** Use a soft, dry cloth to clean the exterior, and use the provided brush to clean the incense chamber.

5. The mesh sheet can be cleaned with water and a brush and should be dried completely before placing it back in the device.
6. The incense chamber can be refilled with new incense after making sure it is completely clean and dry.

### Note

1. Cleaning the cooling fan will not necessarily improve performance and may lead to damage to the device.
2. Do not use sharp objects when cleaning the device or its accessories.

## Storage

### General Safety Instructions

Before storing the device or leaving it unused, always disconnect the safety lock to turn off the device.

Store the device at a temperature between 5°C and 25°C, and avoid storing it at temperatures above 40°C or below -5°C.

### Incense Storage

Do not store incense in a humid place, and make sure not to store incense in any place exposed to moisture or high temperatures such as inside a car, near stoves, heaters, or in direct sunlight.

Keep the device out of the reach of children and pets and away from flammable materials.

### Due to the risk of battery swelling

1. Immediately stop charging, disconnect the charger, and remove the device from the charger.
2. Place the device in a safe, well-ventilated area, away from flammable materials, for about 30 minutes to allow it to cool down.

After this step, it is necessary to properly dispose of the battery. Do not

attempt to use or reuse the battery, and only use a new, high-quality battery from a certified supplier that matches the device's specifications, or have a professional technician replace the battery.

-The operating temperature range of the device is from 0°C to 45°C.

-The storage temperature range is from -32°C to 113°F, or 0°C to 45°C.

-The charging temperature range is from 0°C to 60°C, and the battery should not be charged at temperatures above 60°C. The recommended charging temperature should not exceed 160°F or 70°C.

## **Battery Disposal**

Do not use lithium-ion batteries for recharging if they are damaged or worn out. When the battery loses 20% of its capacity, do not use it again; dispose of it properly. Never use used batteries for recharging if they are damaged, and always dispose of them correctly.

The regulations and methods for safely disposing of lithium-ion batteries differ from country to country. Always check local authorities and regulations to ensure compliance before disposing of any batteries

## **Limitation of Liability**

This product is intended for household use only. The manufacturer is not liable for any injury, loss of life, or damage to property that results from misuse or failure to follow instructions. This includes (but is not limited to) cases of fire, electric shock, or any resulting injuries or damage to persons or property. Regardless of the legal basis, the company assumes no responsibility for any special, incidental, or consequential damages that result from the use of this product. The company also reserves the right to modify the product's specifications or design without prior notice.

To avoid electric shock, do not use metal objects to touch the heating wire during operation, as shown in the images below.



## Warranty

Products that you buy directly from our **Green Lion** website or shop come with a 24-month warranty.

When you buy **Green Lion** products from any of our approved sellers, you only get a 12-month warranty. If you want to extend this warranty, go to our website at <https://www.greenlion.net/warranty> and fill out the form with your information. Don't forget to upload a picture of the product too. After we've checked and accepted your request, we'll send you an email to confirm that your product's warranty has been extended.

For more info, please check:

<https://www.greenlion.net/warranty>

## Contact Us

If you have any questions about this Privacy Policy, please contact us at:

Website: <https://www.greenlion.net/>

Sales: [sales@greenlion.net](mailto:sales@greenlion.net)

Service Support: [Support@greenlion.net](mailto:Support@greenlion.net)

Telegram: [@greenlion\\_global](https://www.instagram.com/greenlion_global)

Instagram: [@greenlion\\_global](https://www.instagram.com/greenlion_global)