

**PORODO
GAMING**



Porodo Gaming
CHILLCORE
COOLING GAME CONTROLLER

SKU: PDXCGCBK

Table of Contents

Product Overview	2
Specifications	2
Product Components	4
Power and Charging	5
Cooling System	5
Mode Selection	6
Controller Pairing Instructions	6
Button Configuration	7
Adjusting Connection Speed	8
Macro Mapping Instructions	8
Joystick Calibration	9
Adjusting Vibration	9
Switching Between Joystick and D-Pad	9
Motion Sensor Calibration	10
Switch Pairing	10
Safety Precautions	12
Disposal	12
Warranty	13
Contact Us	13

Product Overview

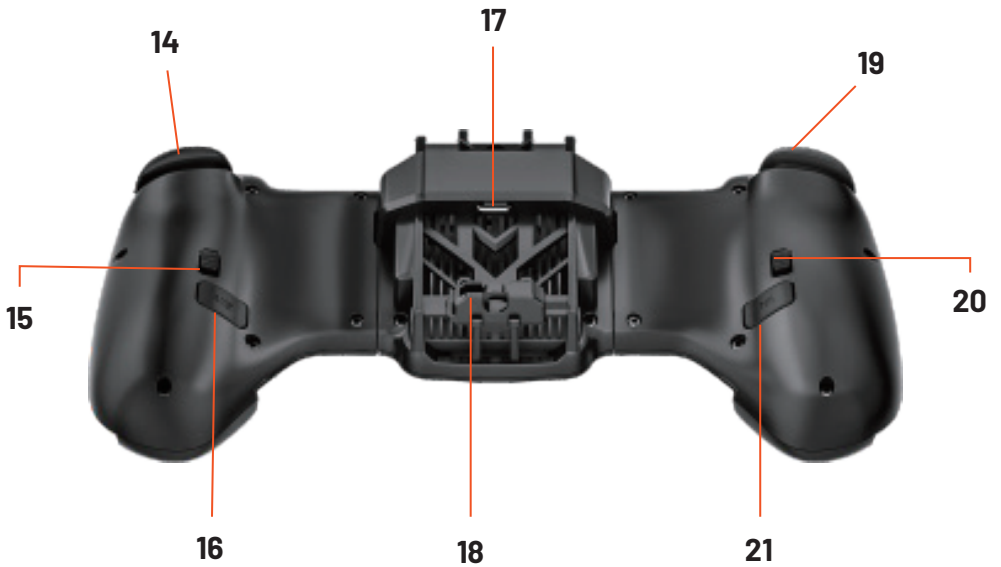
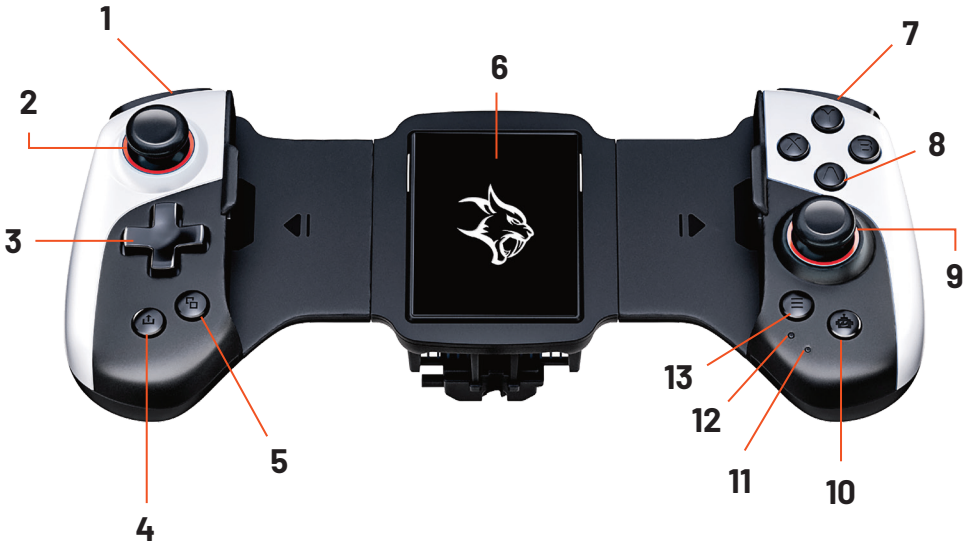
The Chillcore Cooling Game Controller is a state-of-the-art gaming accessory designed to enhance your mobile gaming experience. Featuring wireless connectivity, multi-platform compatibility, and a customizable macro mapping system, this controller allows for seamless control across various devices. It is equipped with a 300mAh battery for long-lasting performance, an active cooling system to keep your device cool during intense gaming sessions, and vibration feedback for a more immersive experience. The built-in RGB lighting adds a dynamic touch, elevating your gaming setup's visual appeal. Whether you're playing on your phone or other compatible devices, the Chillcore Cooling Game Controller provides the ultimate control and comfort for gamers who demand performance and style.

Specifications

Input	5V/2A
Battery capacity	300mAh
Cooling Power	6W
Fan Speed	4000rpm
Cooling Effect	18°C-20°C

Cooling Noise Level	1.05A
Macro Mapping	Up to 100 Steps
Bluetooth Version	5.3
Charging Interface	USB-C
Compatible Device Size	136-184mm
OS Compatibility	Android, iOS, Windows & Nintendo Switch
Material	ABS + Metal
Vibration	Supported
Product Size	57×94.5× 214.5mm
Product Weight	210.7g
Model Number	PDXCGC

Product Components



- | | | |
|-----------------------------------|------------------------------------|---------------------------------|
| 1. L1 | 8. A,B,X,Y buttons | 15. Lock button for M2 |
| 2. Left clickable joystick | 9. Right clickable joystick | 16. Multi-function M2 |
| 3. D-pad | 10. Power switch | 17. Type-C charging port |
| 4. Share button | 11. FN LED Indicator | 18. Charging cable clip |
| 5. Window button | 12. Status Indicator | 19. L2 |
| 6. Cooler | 13. Menu button | 20. Lock button for M1 |
| 7. R1 | 14. R2 | 21. Multi-function M1 |

Power and Charging

1. Power Button Functions

- a.** Turn On: Press and hold the power button for 3 seconds.
- b.** Turn Off: Press and hold the power button for 3 seconds.
- c.** Bluetooth Connection: If Bluetooth is connected, the device will automatically sleep after 15 minutes of inactivity. If not connected after startup, the device will shut down automatically after 5 minutes.

2. Power Supply Indicators

- a.** Charging: White light stays on.
- b.** Full Battery: The light turns off.
- c.** Low Power: Red light flashes 10 times quickly in a 3-minute cycle.
- d.** USB Charging: When connected to a USB cable, the radiator does not activate—only charging is carried out.

Cooling System

1. Power Supply for Cooling:

Connect the 5V2A external power adapter when the handle is on for cooling. This will simultaneously shut down the handle and the radiator.

2. Cooling Mode Control:

- a. Press and hold the window button for 3 seconds to switch the cooling mode.
- b. To turn off the cooling mode, use the window button.
- c. The next time you activate the handle, the cooler will remain off until manually turned on again.

Mode Selection

1. Available Modes

- a. Direct Play Mode: For Android/Harmony OS, using the game Assistant App with the mapping button.
- b. Standard Mode: For iOS/Android, the system opens controller mode games (e.g., Xbox games).
- c. Switch Mode: For Nintendo Switch consoles only.

2. Mode Switching

- a. Double-click the power button to switch between modes.
- b. Factory Default Standard Mode (iOS/Xbox): Green light → Bluetooth Name: Xbox Wireless.
- c. Controller Mode: Direct Play Mode (Android App mapping mode): Blue light → Bluetooth Name: JK02.
- d. Switch Mode: Red light → Bluetooth Name: JK02.

Controller Pairing Instructions

1. Standard Mode (Factory Default)

- a. Enter Pairing: Press the Window button + Share button (except in Direct Play mode).

- b. Pairing Status:

The green light blinks quickly.

Once paired, the green light remains steady.

- c.** Reconnect: When the controller connects back, the green light blinks slowly.
 - d.** Unpairing: If the phone is unpaired, the controller will automatically shut down.
- 2.** Direct Play Mode
- a.** Pairing: Blue light blinks slowly.
 - b.** Once paired, the blue light stays on.
 - c.** Reconnect: Blue light blinks slowly upon reconnect.
 - d.** Shutdown: When the Switch enters shutdown, the controller automatically turns off.
- 3.** Switch Mode
- a.** In Pairing Mode: Red light blinks fast.
 - b.** Once Paired: The red light remains steady.
 - c.** Reconnect: Red light blinks slowly on the back of the controller.
 - d.** Shutdown: The controller shuts down when the Switch powers off.

Button Configuration

- 1.** Standard Mode and Switch Mode:
- a.** Set a Button: Long-press the button to be configured and ensure it's not loose. Then press the power button to turn on the connecting point.
 - b.** Indicator Light: The Fn LED indicator will flash twice, signaling that the supported buttons (A, B, X, Y, L1, L2, R1, R2) are ready for connection. The indicator light on the button will flash quickly, showing the connection process.
 - c.** Cancel Connection: To cancel a connection, long-press the button you wish to remove and double-click the power button.
- 2.** Direct Play Mode:
- Adjust the configuration settings in the Game Assistant App to enable this mode.

Adjusting Connection Speed

1. Standard Mode and Switch Mode:

- a.** Adjust Connection Speed: Press the Power button + D-PAD (up or down) to adjust the connection speed (7/s, 10/s, or 30/s).
- b.** Successful Adjustment: After the adjustment, the red light will flash for 0.5 seconds to confirm the new speed.

2. Direct Play Mode:

Adjust the settings through the Game Assistant App to enable this mode.

Macro Mapping Instructions

1. Standard Mode and Switch Mode:

- a.** Enter Macro Recording Mode: Long-press the Power button + Back button (multi-function button) for 3 seconds.
- b.** Indicator: The Fn LED indicator will light up in red, signaling the start of recording.
- c.** End Recording: Press the Power button to stop. The indicator will flash red twice and automatically exit the recording when it's full (up to 100 steps supported).

2. Supported Buttons:

Left and Right joystick, A, B, X, Y, L, R, L2, R2, M1, M2, D-PAD (four button values), Window button, Menu button.

3. Delete Macro:

- a.** Long Press: Press and hold the macro back button (multi-function button) to delete the macro.
- b.** Double-click: Double-click the Power button to confirm the deletion.

4. Direct Play Mode:

Adjust the configuration settings through the Game Assistant App to enable this mode.

Joystick Calibration

1. Standard Mode and Switch Mode:

a. Enter Calibration Mode: Long-press the Window button + Menu button for 3 seconds to start joystick calibration.

b. Calibration Process:

The white light will breathe.

The rocker will shake three times.

Press the Window button + Menu button again to complete the calibration.

2. Direct Play Mode:

Adjust the configuration settings through the Game Assistant App to enable this mode.

Adjusting Vibration

1. Global Vibration Adjustment:

Press the Power button + D-PAD to adjust the global vibration settings (No, Low, Medium, High). The factory default is mid-range vibration.

2. Button-Specific Vibration:

a. Set Vibration: Press the Power button + Double-click the button to be set (A, B, X, Y, L, R, L2, R2, M1, M2). The key will be associated with vibration, and it will vibrate when pressed.

b. Cancel Vibration: Press the Power button + Double-click the button again to cancel the associated vibration.

Switching Between Joystick and D-Pad

1. Switch to D-Pad:

Press the Window button, then press the middle button of the left rocker once to switch to the D-Pad.

2. Switch Back to Joystick:

Press the middle button of the D-Pad again to switch back to the rocker.

3. Completion:

The adjustment is complete when the white light of the indicator flashes twice.

Motion Sensor Calibration

(This function is only applicable to hosts with a gyroscope)

1. Enter Calibration Mode:

- a. Press the Power button + Menu button to start the motion sensor calibration.
- b. Calibration Status: The indicator turns purple and flashes twice after calibration, but the calibration will not exit directly.

2. Motion Sensor Types:

a. Global Motion Sensor:

Press the Power button + Left joystick/Right joystick down to activate the left joystick's global motion sensor.

b. Responsive Motion Sensor:

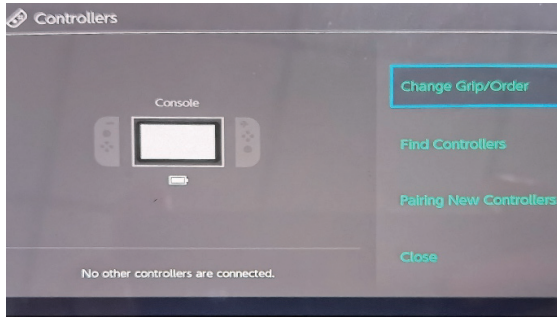
Press the Window button + Right joystick down + any button to activate the responsive motion sensor. The purple light will remain bright.

Switch Pairing

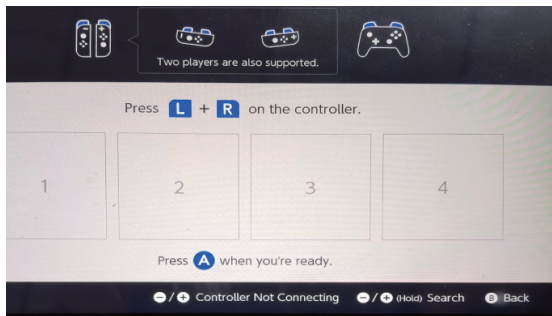
1. Turn on the switch and enter the Controller Setting.



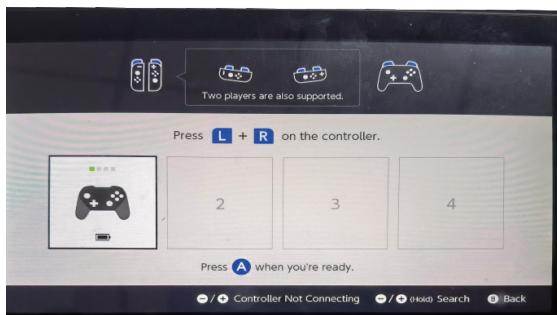
2. Turn on the switch and enter the Controller Setting.



3. Turn on the controller, double-click the power button to select switch mode (the red light flashes slowly), then press the share button and the window button at the same time until the red light flashes quickly.



4. The pairing is successful when the controller and green icon turn on and the red lights up.



Safety Precautions

- 1.** Do not block the cooling fan while using the controller to ensure proper airflow and avoid overheating.
- 2.** Always use the controller in a well-ventilated area to maintain its cooling performance.
- 3.** Avoid exposure to water or excessive moisture to prevent damage to internal components.
- 4.** Handle the controller gently to avoid damage to buttons, connectors, or the cooling fan.
- 5.** Do not attempt to disassemble or puncture the battery. In case of a damaged battery, immediately stop using the controller and contact support.
- 6.** Store the controller in a cool, dry place when not in use, away from extreme temperatures.
- 7.** Ensure the controller is compatible with your device before use to avoid connection issues.
- 8.** Do not expose the controller to extreme temperatures (above 40°C or below -10°C) as this may affect its functionality.
- 9.** Always unplug the controller once it is fully charged to prevent overcharging and to prolong the battery's life.

Disposal

This product must not be disposed of as unsorted household waste. It is important to separate such waste for proper treatment and recycling, in compliance with local waste management regulations.

Warranty

Products that you buy directly from our **Porodo** website or shop come with a 24-month warranty.

When you buy **Porodo** products from any of our approved sellers, you only get a 12-month warranty. If you want to extend this warranty, go to our website at <https://www.porodo.net/warranty> and fill out the form with your information. Don't forget to upload a picture of the product too. After we've checked and accepted your request, we'll send you an email to confirm that your product's warranty has been extended.

For more info, please check:
<https://www.porodo.net/warranty>

Contact Us

If you have any questions about this Privacy Policy, please contact us at:
info@porodo.net

Website: <https://www.porodo.net/>

Service Support: support@porodo.net

Instagram: **porodo**