

# PORODO



## **Porodo** **10000mAh Qi2 Wireless** **Power Bank**

SKU: PDPBFCH086DG

# Table of Contents

|                    |   |
|--------------------|---|
| Overview           | 2 |
| Specifications     | 2 |
| Product Diagram    | 3 |
| Charging Guide     | 3 |
| Charging Indicator | 3 |
| Safety Warnings    | 4 |
| Material Contents  | 5 |
| Troubleshooting    | 6 |
| Warranty           | 8 |
| Contact Us         | 8 |

## Overview

The Porodo Qi2 Wireless Power Bank offers a sophisticated solution for on-the-go charging. Equipped with a 15W wireless charging capacity and a 20W USB-C output, this power bank ensures efficient and rapid power delivery to multiple devices simultaneously. The integrated TFT Digital Display provides real-time voltage information, allowing users to monitor their charging status with precision. Additionally, the 360° rotating ring stand enhances convenience by providing flexible positioning for the device. With its 3-in-1 wireless charging feature, this power bank is the ideal choice for those seeking a reliable, versatile, and portable charging solution.

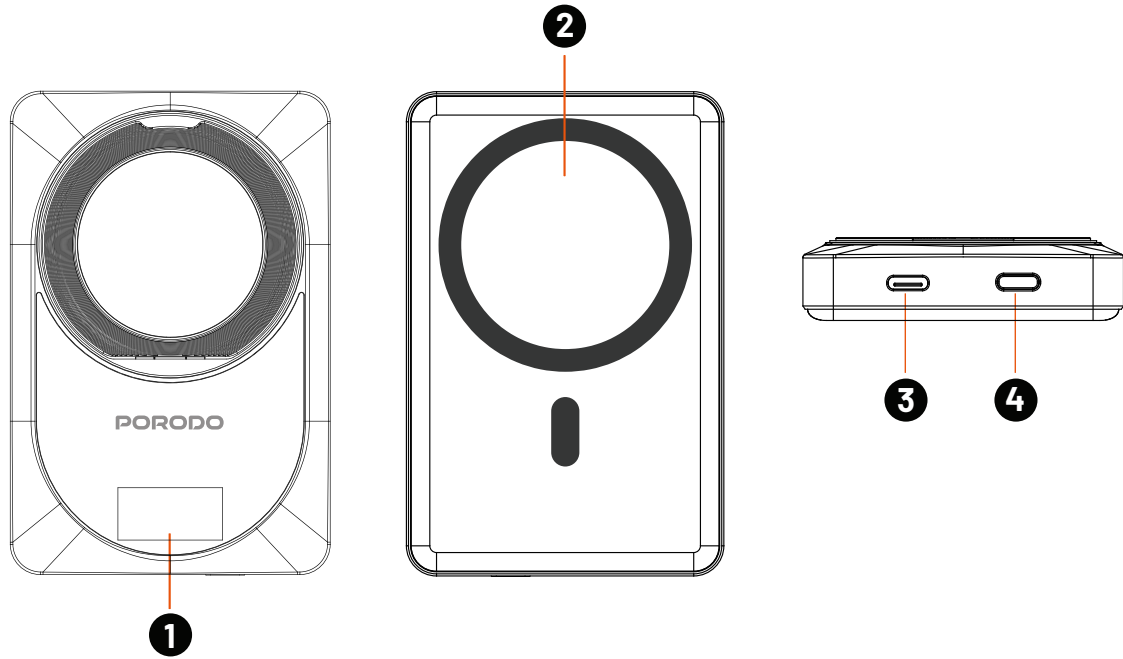
**Current Power Display:** The power digital indicator shows the remaining power. Once the low power mode is deactivated, the output button is disabled, and the digital display turns off.

**Discharge Status:** The indicator displays the current power level. When the power is low, the digital display turns off, and the output button becomes inactive.

## Specifications

|                       |                                     |
|-----------------------|-------------------------------------|
| Battery Capacity      | 10000mAh                            |
| USB-C Input           | 5V/3A, 9V/2A, 12V/1.5A, 18W Max     |
| USB-C Output          | 5V/3A, 9V/2.22A, 12V/1.67A, 20W Max |
| Wireless Output       | 5W/7.5W/10W/15W                     |
| Watch Charging Output | 2.5W Max                            |
| Total Output          | 5V/3A, 15W Max                      |
| Product Weight        | 215g                                |
| Product Size          | 17.5 x 69 x 105 mm                  |
| Model Number          | PDPBFCH086                          |
| Executive Standard    | GB 4943.1-2022, GB 31241-2022       |

## Product Diagram



1. Display
2. Wireless Output/Wireless Watch Charging Output
3. Type-C Input/Output
4. Switch Button

## Charging Guide

**Charging Other Devices:** To charge digital devices, connect the power bank to the device using a compatible Type-C cable.

**Recharging the Power Bank:** When the power bank's battery is low, recharge it using a suitable charging cable through a USB port on a computer, an AC adapter, or a car charger.

## Charging Indicator

**Charging the Power Bank (Input):** When the power bank is charging, the digital display flashes to indicate the current power level. Once fully charged, the display will show "100" and the light will remain on.

**Charging Other Devices (Output):** When discharging, the digital display shows the current battery percentage.

If the power level drops below 0 %, the display will show "0 %" and flash at a rate of 1Hz to indicate a low battery. When the battery voltage falls below 3V, the power bank will automatically turn off.

## Safety Warnings

- 1.** The product should be placed on a stable surface during use. If it is necessary to make contact with the human body, limit the contact time to no more than 10 seconds.
- 2.** The recommended operating temperature range is 0°C to 35°C. Do not use the product in environments where the temperature exceeds 35°C or drops below 0°C.
- 3.** Do not expose the product to fire or water. Avoid cleaning it with a damp cloth to prevent leakage, short circuits, or other malfunctions.
- 4.** Do not obstruct the product with paper or other objects to ensure proper heat dissipation and cooling.
- 5.** Do not leave the product unattended during use.
- 6.** Do not attempt to disassemble the device. This product contains no components that can be serviced or maintained by the user.
- 7.** Avoid dropping, shaking, knocking, impacting, or squeezing the product.
- 8.** Do not short-circuit the anode or cathode of the product to prevent fire hazards.
- 9.** Keep the product out of the reach of children.
- 10.** Before using the product, ensure that the charger's output voltage matches the product's requirements. Using an incorrect voltage may lead to overload, causing smoke, fire, or other hazards.
- 11.** Always unplug the charger once the power bank is fully charged.
- 12.** If you notice any abnormal signs, such as unusual odors, heat, discoloration, deformation, or leakage, immediately discontinue use and deactivate the product.
- 13.** If using a certified power adapter, ensure it is compatible with standard requirements.
- 14.** In the event the battery needs replacement, only use the same type or equivalent battery. Batteries should only be replaced by qualified personnel. Do not expose batteries to extreme conditions such as sunlight, fire, or overheating.
- 15.** Never immerse the product in water.

# Material Contents

Disposal Information: When disposing of this product, do not discard it with general household waste. It should be taken to a government-designated recycling center to ensure proper disposal and benefit environmental protection.

| Declaration of Hazardous Substances in Electronic and Electrical Products |    |    |    |                  |      |       |
|---|----|----|----|------------------|------|-------|
| Component Name  | Pb | Cd | Hg | Cr <sub>6+</sub> | PBBs | PBDEs |
| Shell   | ○  | ○  | ○  | ○                | ○    | ○     |
| PCB   | ×  | ○  | ○  | ○                | ○    | ○     |
| Battery   | ○  | ○  | ○  | ○                | ×    | ×     |
| Screw   | ○  | ○  | ○  | ○                | ×    | ×     |
| Metal Components  | ○  | ○  | ○  | ○                | --   | --    |
| Data Line   | ○  | ○  | ○  | ○                | ○    | ○     |

This table is prepared in accordance with the provisions of SJ/T11364.

○: Indicates that the content of toxic and harmful substances in all homogeneous materials of the component is within the limits specified in GB/T 26572.

x: Indicates that the content of toxic and harmful substances in at least one homogeneous material of the component exceeds the limits specified in GB/T 26572. This component cannot be replaced for technical reasons, but future advancements may enable replacement or improvement.

--: According to GB/T 26572, there are no requirements for the content of PBBs and PBDEs in metal components.

The environmental protection period for this product under normal use is 5 years.

The "hazardous substances" listed in this table do not pose a risk to human health or the environment under normal product use.



The "hazardous substances" and their components displayed in this table are provided to inform consumers and recycling practitioners about the presence of relevant substances, which will help ensure proper disposal of product waste.

## Troubleshooting

**1. Problem:** Indicators cannot display a full charge status after an extended charging time.

Cause:

**1.1** Insufficient charging time.

**1.2** Adapter or product malfunction.

Solution:

**1.1** Charge the product for 12 hours.

**1.2** Consult the distributor or after-sales service.

**2. Problem:** The remaining power of the product cannot be detected.

Cause:

**2.1** No remaining power.

**2.2** Power button or indicator malfunction.

**2.3** Power failure of the product.

Solution:

**2.1** Charge the product again.

**2.2** Consult the distributor or after-sales service.

**3. Problem:** The product cannot charge other devices.

Cause:

**3.1** Low power of the product.

**3.2** No power transmission in the USB cable or adapter.

**3.3** Incorrect choice of adapters.

**3.4** Power management system of the product prohibits charging for the device.

Solution:

**3.1** Charge the product again.

**3.2** Change the USB cable or adapter.

**3.3** Look for a proper connector that fits the device.

**3.4** The product is incompatible with the device.

**4. Problem:** The product can charge other devices but cannot fully charge them.

Cause: The battery of the product is depleted.

Solution: Charge the product.

**5. Problem:** When charging other devices with remaining power, the product suddenly stops working or fails to display any power.

Cause: External short circuit or overload of the product has triggered an automatic shutdown for self-protection.

Solution: Charge to reactivate the product.



## **Warranty**

Products that you buy directly from our **Porodo** website or shop come with a 24-month warranty.

When you buy **Porodo** products from any of our approved sellers, you only get a 12-month warranty. If you want to extend this warranty, go to our website at **porodo.net/warranty** and fill out the form with your information. Don't forget to upload a picture of the product too. After we've checked and accepted your request, we'll send you an email to confirm that your product's warranty has been extended.

For more info, please check:  
**porodo.net/warranty**

## **Contact Us**

If you have any questions about this Privacy Policy, please contact us at:

**info@porodo.net**

Website: **porodo.net**

Service Support: **support@porodo.net**

Instagram: **porodo**