



Powerology

Wireless HDMI to HDMI AUDIO & VIDEO

SKU: PHDMRABK



Table of Contents

| | |
|------------------|---|
| Product Overview | 2 |
| Specifications | 2 |
| Product Sections | 3 |
| Setup Guide | 4 |
| Receiver Pairing | 5 |
| FCC Statement | 7 |
| Disposal | 8 |
| Warranty | 9 |
| Contact Us | 9 |

Product Overview

The Powerology Wireless HDMI to HDMI transmitter and receiver allows seamless, high-quality audio and video transmission without the need for cables. With a full HD 1080p resolution at 60Hz, it offers instant plug-and-play functionality and supports long-range transmission with low latency. Designed for easy setup, this device ensures high performance for a variety of multimedia needs, whether for home entertainment or professional use. It comes with a patented design for optimal efficiency and compatibility.

Specifications

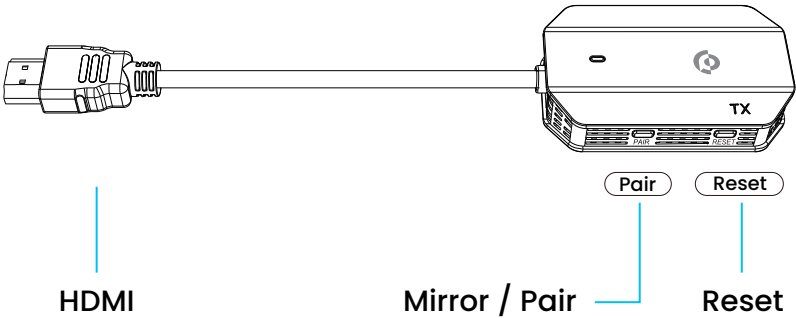
| | |
|--------------------|--------------------|
| Material | ABS |
| Power | DC 5V/1A |
| Interface | HDMI |
| Resolution | 1080P@60Hz |
| Display Output | 1920 x 1080 @ 60Hz |
| Transmission Range | 30 Meters |

| | |
|--------------|--------|
| Model Number | PHDMRA |
|--------------|--------|

Product Sections

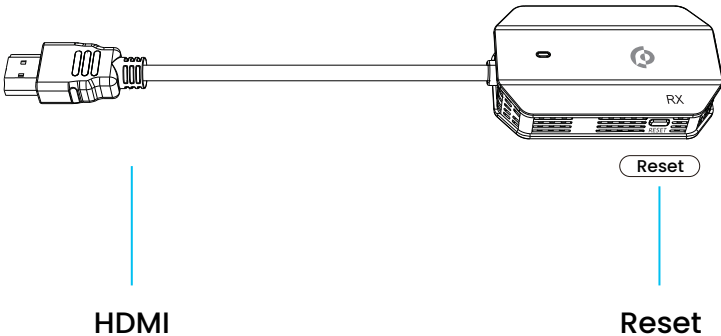
Transmitter (TX)

Easily mirror whatever shows on your laptop or mobile screen, ideal for video-watching, game-play, and idea sharing.



Receiver (RX)

Display the contents passed from your transmitter on the big screen like HDTV or projector screen.



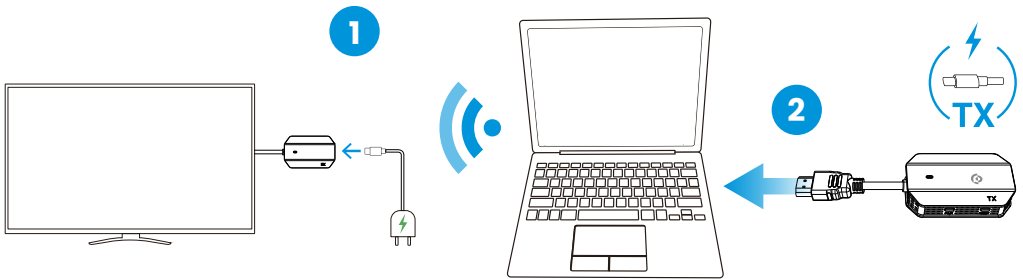
setup Guide

1. Install the wireless receiver (RX):

Insert the wireless receiver (RX) into the HDMI port of the TV and connect the Type-C connector to an independent power supply (5V/1A).

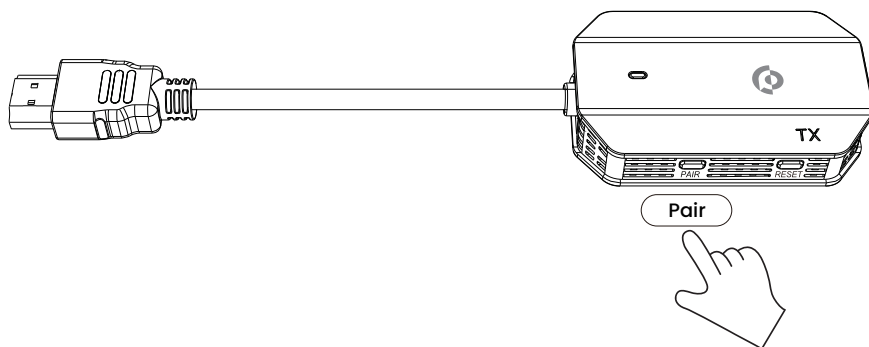
2. Connect the wireless transmitter (TX):

Connect the wireless transmitter (TX) to the HDMI port of the computer or phone, and connect the Type-C connector to an independent power supply (5V/1A) to ensure sufficient power supply. Wait for a few seconds until the flashing light on the transmitter (TX) stops flashing, and the automatic screen projection will begin.



3. Stop/restart mirroring:

To stop or restart mirroring, click the screen projection/ pairing button on the wireless transmitter (TX).

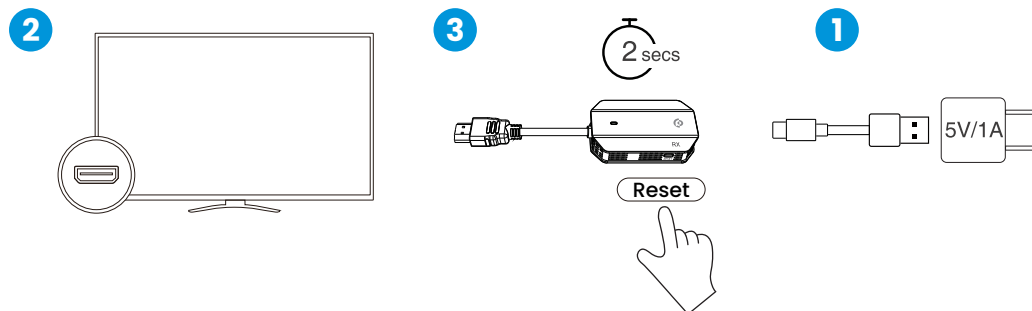


Note: The product is already paired by default and can be used without pairing again.

Receiver Pairing

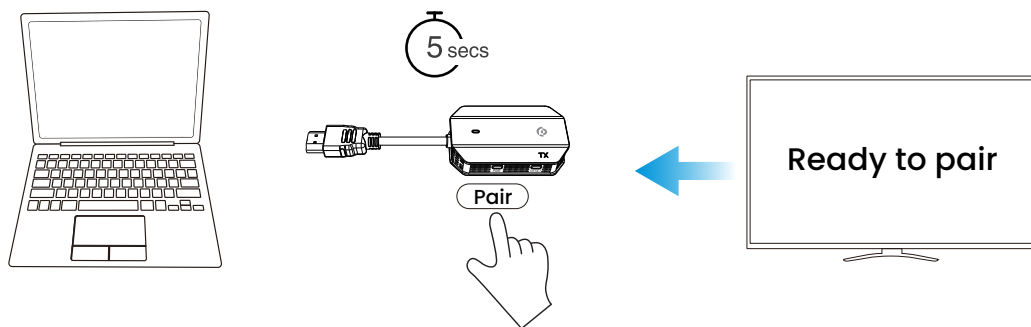
A. Enable pairing mode on the receiver:

- (1)** Connect the wireless receiver (RX) to a power source via the Type-C connector.
- (2)** Connect the wireless receiver (RX) to the TV via the HDMI end.
- (3)** Press and hold the "RESET" button on the wireless receiver (RX) for about 2 seconds until the screen displays "Ready to pair".



B. Press the screen projection/pairing button on the wireless transmitter (TX):

Connect the wireless transmitter (TX) to the HDMI port of the computer and connect the Type-C connector to an independent power supply (5V/1A). When the screen displays "Ready to pair", press and hold the screen projection/pairing button on the transmitter for 5 seconds to complete the pairing.



Note: The "RESET" button on the wireless receiver (RX) has two different settings depending on the length of time it is pressed:

- (1)** Press and hold for 2 seconds: Enable pairing mode on the wireless receiver (RX) for pairing with the wireless transmitter (TX).
- (2)** Press and hold for 10 seconds: Restore the wireless receiver (RX) to its original settings.

FCC Statement

1. This device complies with Part 15 of the FCC Rules. Operation is subject to the following two conditions:

- (1)** This device may not cause harmful interference; and
- (2)** This device must accept any interference received, including interference that may cause undesired operation.

2. Changes or modifications not expressly approved by the party responsible for compliance could void the user's authority to operate the equipment.

Note: This equipment has been tested and found to comply with the limits for a Class B digital device, pursuant to Part 15 of the FCC Rules. These limits are designed to provide reasonable protection against harmful interference in a residential installation.

This equipment generates and can radiate radio frequency energy, and if not installed and used in accordance with the instructions, may cause harmful interference to radio communications. However, there is no guarantee that interference will not occur in a particular installation. If this equipment does cause harmful interference to radio or television reception, which can be determined by turning the equipment off and on, the user is encouraged to try to correct the interference by one or more of the following measures:

Reorient or relocate the receiving antenna.

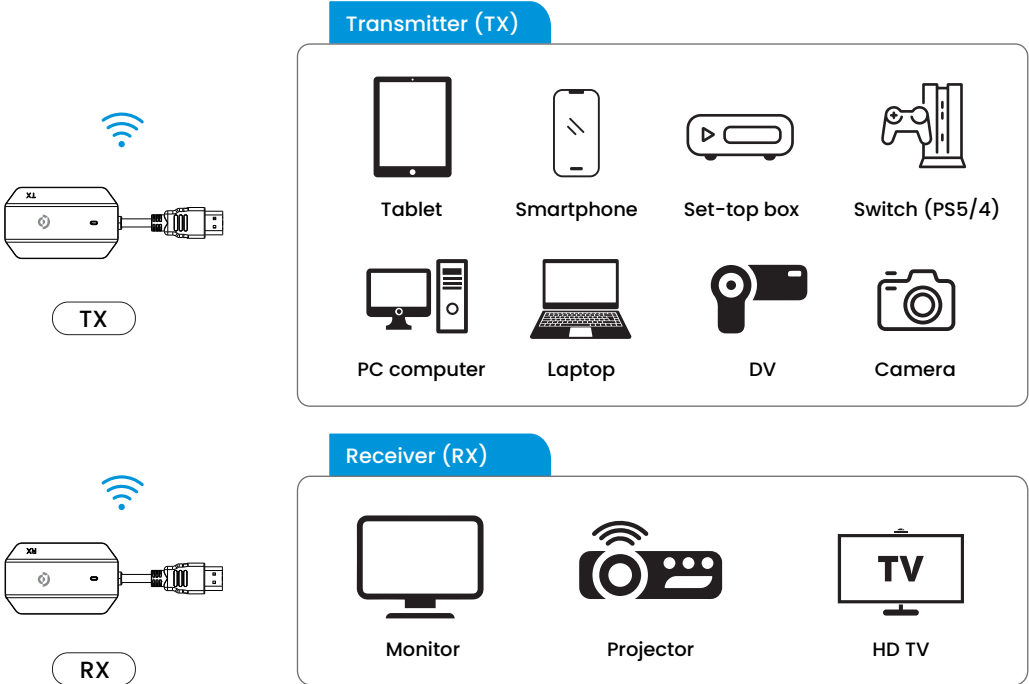
Increase the separation between the equipment and receiver.

Connect the equipment to an outlet on a circuit different from that to which the receiver is connected.

Consult the dealer or an experienced radio/TV technician for assistance.

RF warning statement:

The device has been evaluated to meet general RF exposure requirements. The device can be used in portable exposure conditions without restriction.



Disposal

This product must not be disposed of as unsorted household waste. It is important to separate such waste for proper treatment and recycling, in compliance with local waste management regulations.

Warranty

Products that you buy directly from our **Powerology** website or shop come with a 24-month warranty.

The 24-month warranty applies to products purchased directly from our **Powerology** website or store. If **Powerology** products are bought from any of our verified retailers, then the product is eligible for only a 12-month warranty. To extend your product's warranty, visit our website **powerology.me/warranty** and fill in your details in the provided form along with an uploaded picture of the product to process your request. Once approved, you will receive a confirmation email of the extended product warranty. Upload the required information within 48 hours of purchase to be eligible for a 24-month warranty period.

For more info, please check:
powerology.me/warranty

Contact Us

If you have any questions about this Privacy Policy, please contact us at: **hey@powerology.me**

Website: **powerology.me**

Instagram: **powerology_official**

Facebook: **powerology.ME**