



Green Lion

GLV-15 VACUUM CLEANER

SKU: GNGLV15VCGY

Model No: GB-326X

Table of Contents

Product Overview	2
Specifications	2
Safety Precautions	3
Schematic View	3
Accessories	4
Installation Guide	4
Precautions	5
Charging Instructions	6
Cleaning and Disassembling	6
Disposal	7
Warranty	7
Contact Us	7

Product Overview

The Green Lion GLV-15 Vacuum Cleaner is a versatile cleaning tool that functions as a vacuum, air blower, and air duster. Equipped with a powerful 100,000 RPM motor, it delivers high suction power of 15 kPa for effective cleaning. The 6000mAh rechargeable battery ensures up to 30 minutes of continuous operation, while the digital display provides real-time power monitoring. It features a HEPA filter for enhanced filtration, multifunctional nozzles for various cleaning tasks, and cleaning brushes for added convenience. Ideal for home or office use, the GLV-15 offers a portable and efficient solution to keep your space spotless.

Specifications

Model No.	GB-326X
Material	ABS
Motor	DC Brushless
Power	100W
Battery	6000mAh
Voltage	11.1V
Suction Power	15 kPa
Speed	3 Levels
Airflow	680L/min
Dust Capacity	200mL
RPM Range	100000 RPM
Noise Level	≤85 dB

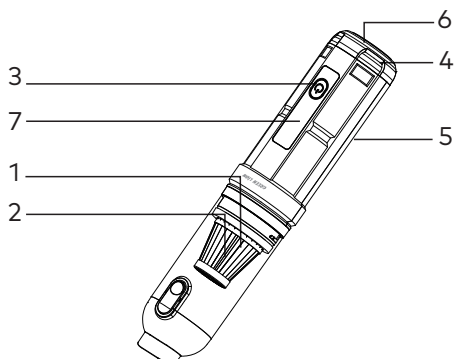
Charging Port	USB-C
Charging Time	4 Hrs
Working Time	12-18-30 min
Product Weight	460 g
Product Dimensions	60*60*285 mm

Safety Precautions

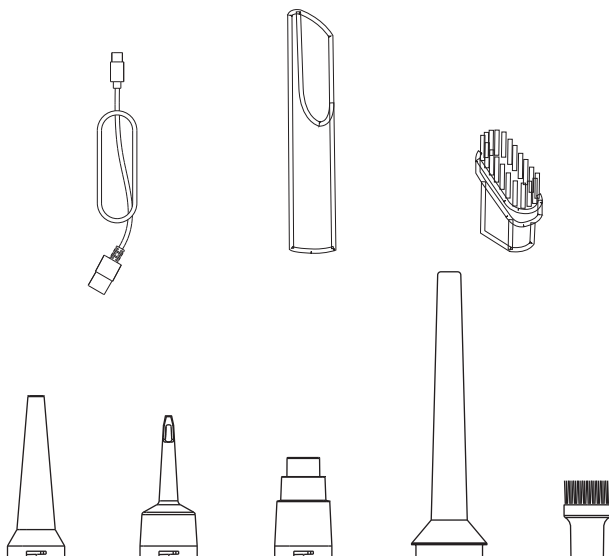
1. Keep this manual in a safe place. If you transfer the product to a third party, make sure to include this manual with the machine.
2. Any operation that is inconsistent with the instructions in the manual may cause serious injury, property loss, or damage to the product itself.
3. Our company will not be held liable for any loss caused by failure to operate the product according to the instructions.
4. Always exercise caution when using the product to prevent danger.
5. Keep the product properly stored, out of the reach of children and people who are unable to judge potential environmental risks.
6. Do not store the product in high locations to avoid the risk of accidental falls.

Schematic View

1. HEPA
2. Dust collection bin
3. Power switch
4. Air Vent
5. Handle
6. USB Charger
7. Battery Level Display

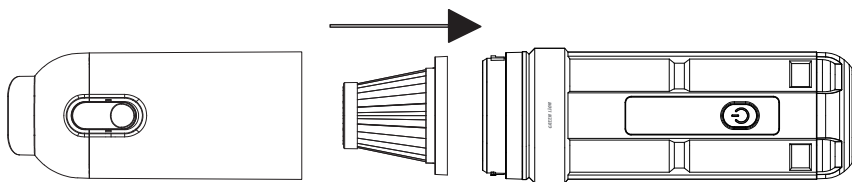


Accessories



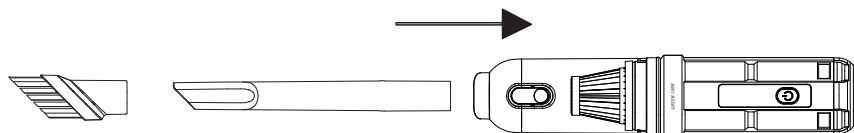
Installation Guide

1. Install the HEPA filter cover into the dust-collecting cup as shown in the figure.
2. Rotate the dust-collecting cup assembly counterclockwise as shown in the figure. A "click" sound will indicate that the installation is successful.



3. Dust Collection Mode:

Insert the two-in-one flat suction nozzle into the suction port of the host.

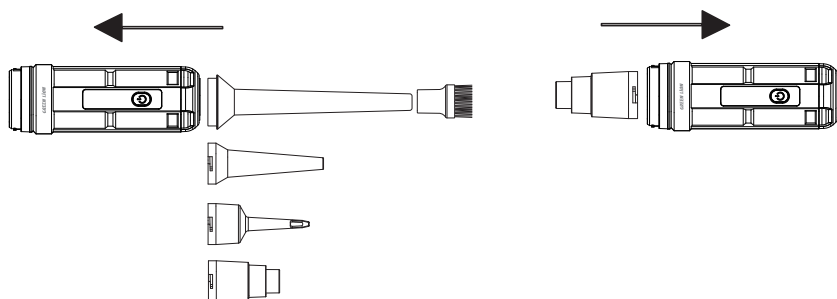


4. Blowing Mode:

Install the air nozzle onto the host, following the direction indicated by the arrow in the figure.

5. Extraction Mode:

Install the air extraction nozzle onto the host, following the direction indicated by the arrow in the figure.



Precautions

1. Install the HEPA filter cover into the dust-collecting cup as shown in the figure.

2. Rotate the dust-collecting cup assembly counterclockwise as shown in the figure. A "click" sound will indicate that the installation is successful.

3. Dust Collection Mode:

Insert the two-in-one flat suction nozzle into the suction port of the host.

4. Blowing Mode:

Install the air nozzle onto the host, following the direction indicated by the arrow in the figure.

5. Extraction Mode:

Install the air extraction nozzle onto the host, following the direction indicated by the arrow in the figure.

Charging Instructions

1. Insert the charging cable into the USB interface and connect the other end to the charging port.

2. Do not start the machine while charging. The red indicator light shows the device is charging, and the green light indicates that it is fully charged.

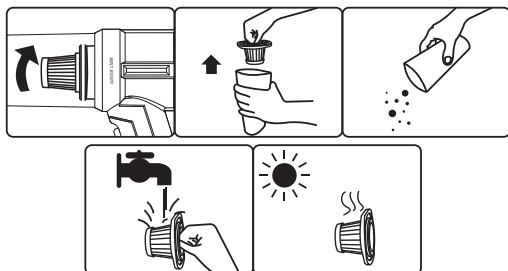
Cleaning and Disassembling

1. Rotate the dust-collecting cup in the direction shown in the figure and remove it from the host.

2. Take out the HEPA filter screen from the dust bin and dispose of the garbage in the trash can.

3. Separate the HEPA filter cover and dust collecting cup, then clean the HEPA filter cover using a brush. The dust-collecting cup can be washed and dried before reusing.

4. To reinstall the dust bin, insert the HEPA filter screen into the dust bin, then rotate and tighten it in the opposite direction as shown in step 1.



Disposal

This product must not be disposed of as unsorted household waste. It is important to separate such waste for proper treatment and recycling, in compliance with local waste management regulations.

Warranty

Products that you buy directly from our **Green Lion** website or shop come with a 24-month warranty.

When you buy **Green Lion** products from any of our approved sellers, you only get a 12-month warranty. If you want to extend this warranty, go to our website at <https://www.greenlion.net/warranty> and fill out the form with your information. Don't forget to upload a picture of the product too. After we've checked and accepted your request, we'll send you an email to confirm that your product's warranty has been extended.

For more info, please check:
<https://www.greenlion.net/warranty>

Contact Us

If you have any questions about this Privacy Policy, please contact us at:

Website: <https://www.greenlion.net/>

Sales: sales@greenlion.net

Service Support: Support@greenlion.net

Telegram: [@greenlion_global](https://www.instagram.com/greenlion_global)

Instagram: [@greenlion_global](https://www.instagram.com/greenlion_global)