



**Green Lion**

## **GC-700 Dash Cam**

SKU: GN700DSCAMBK

Model No: GCAM-15

## Table of Contents

Product Overview	2
Specifications	2
Precautions	3
Disclaimer	4
Product Design	5
Installation Guide	6
Connecting The Camera to Your Phone	7
Key Functions	9
Package Contents	12
Disposal	12
Warranty	13
Contact Us	13

## Product Overview

The Green Lion GC-700 Dash Cam is the ultimate driving companion, offering front and rear camera views with 2K + 1080p resolution for clear video capture. Featuring WiFi-app control, this dash cam allows for easy management of your settings and footage. It boasts a 2.0" IPS HD display for optimal viewing and dual power options for flexible usage. The camera includes loop recording functionality and supports TF cards up to 256GB, ensuring continuous and high-quality footage. For added convenience, it comes with a 360° rotatable rear camera, built-in mic and speaker, and functional buttons for seamless operation. Additionally, the dash cam supports 24/7 parking monitoring, giving you peace of mind with a 3.4m ACC hardwire kit, 5.5m rear camera cable, and a 3.3m 12V lighter adapter for easy installation.

## Specifications

Material	ABS + PC
Sensor	Super Night Vision WDR/HDR
Display	2.0" IPS HD
TF Card	Up to 256GB (Not Included)
Front Camera	2560*1440 (2K)

Rear Camera	1920*1080 (1080P)
Lens Angle	145° Wide-Angle
File Format	TS & JPEG
WiFi	2.4G
Application	Super Dash Cam
Mount Type	3M VHB Tape
Power Supply	ACC Hardwire Kit / DC 12V Adapter
Power Interface	USB-C
ACC Hardwire Kit	3.4 m
Lighter Adapter Cable	3.3 m
Rear Camera Cable	5.5 m
Product Weight	102.2 g
Product Dimensions	35.3*61.9*64.7 mm

## Precautions

1. Insert the micro SD card in the correct direction to prevent damage

to the card or device. If an error message appears, format the micro SD card from the device menu. If the issue persists, reset the device or change the micro SD card.

**Note:** All files will be deleted when formatting the micro SD card or performing a firmware update. Please back up important files before proceeding. When the reset function is selected, the device will return to its default settings.

2. A new micro SD card must be formatted before its first use.
3. Ensure the bracket is securely and correctly installed on the windscreen to prevent damage to the device and ensure an optimal recording angle.
4. Do not use the device in wet environments, as it is not waterproof or water-resistant.
5. Avoid recording or taking pictures when the device is facing direct sunlight.
6. To ensure clear image quality, clean the windscreen and device lens regularly. Avoid using the device in dusty environments.
7. Handle the device with care and avoid direct impacts. Refrain from using the device in high electromagnetic environments.
8. Operate the product within a temperature range of -10°C to 65°C. Continuous exposure to high temperatures (especially when the vehicle is locked in the sun and the cabin temperature exceeds 65°C) may cause malfunction, damage to the housing, and distortion of the image.

## **Disclaimer**

1. We are not liable for any loss or damage resulting from unauthorized disassembly or modification of the product.
2. In no event shall we be liable for any direct, indirect, punitive,

incidental, special, or consequential damages to property or life, improper storage, or any other damages arising out of or connected with the use or misuse of our products.

**3.** This device is NOT intended for illegal purposes, surveillance, or to be used as evidence for claims.

**4.** Some countries may prohibit drivers from mounting anything on the windshield, or may restrict mounting to specific areas. It is the owner's responsibility to mount the device in compliance with local laws.

**5.** Errors may occur depending on the surrounding environment and the car's voltage.

**6.** We are not liable or responsible for non-recorded events, missing files, etc.

**7.** If the car battery voltage is lower than the cut-off voltage setting, the device will stop recording when in parking mode.

## Product Design



- |                     |                      |                  |
|---------------------|----------------------|------------------|
| 1. Ok/Camera button | 5. Display Screen    | 9. TF card slot  |
| 2. Up Button        | 6. Front Camera Lens | 10. Power Button |
| 3. Down Button      | 7. Rear Camera Lens  | 11. Holder       |
| 4. Mode Button      | 8. Type-C port       |                  |

## Installation Guide

### 1. Placing the Dashcam

The dashcam can be mounted on either the dashboard or the windshield. Mounting on the dashboard is possible, but it captures a reduced field of view and is more prone to becoming loose. For optimal results, it is recommended to place the dashcam behind the rearview mirror. This location offers the best visibility, minimizes distractions, and is virtually invisible.

- a. Plug the wires into the top gap
- b. Tuck in the wire with a crop bar.
- c. Use a crowbar to pry the rubber strip open and hide the wire inside.

### 2. Mounting

- a. Ensure the surface is clean and free of grease and dust.
- b. Remove the foil from the 3M adhesive strip.
- c. Stick the holder firmly to the desired location.
- d. Press firmly for 10 seconds.
- e. Check the position using the live image in the app.

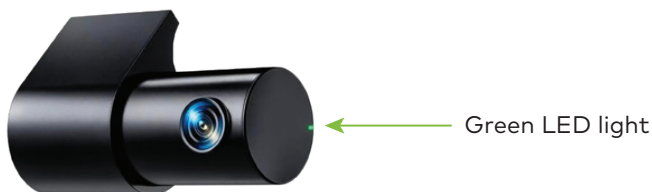
### 3. Hiding the Cable

For a neat finish, route the power cable along the edges of the interior to prevent loose cables that could obstruct the view.

- a. Route the cable along the windscreen towards the passenger side.
- b. Hide the cable behind the headliner, A-pillar, and dashboard.
- c. Connect the cable to a fuse box in the car.
- d. Ensure the cable is not dangling or in the way anywhere.

#### 4. Installation Tips

- a. Before sticking the dashcam, ensure it is flat. Do not remove it after sticking, as it may not be firmly attached.
- b. Turn off the car engine to prevent electric shock during installation.
- c. Adjust the lens angle using the front camera's bracket. We recommend tilting the lens slightly downward (approximately 10° below horizontal) to achieve a 6:4 road-to-background ratio.
- d. Adjust the rear camera lens angle by rotating its body. Ensure the rear camera is properly connected to the front camera.
- e. The dashcam automatically starts recording as soon as it receives power. If the rear camera does not work, check if the LED light on the camera is on. If the LED does not light up, the rear camera may not be connected properly. In this case, ensure the rear camera is securely connected to the front camera.



## Connecting The Camera to Your Phone

### 1. Pair Dashcam with Smartphone

The distance range between the dashcam and smartphone is approximately 10 meters (33ft) in an open-field environment.

### 2. Wireless Connection (Wi-Fi)

At the beginning, enable Wi-Fi & Location on your smartphone.

### 3. Connect via the APP



Step 1: Scan the QR code below to download the app or search for "Super Dash Cam" in the App Store (iOS) or Play Store (Android):

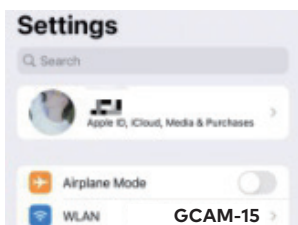


**Note:** If the Wi-Fi connection fails, try using the alternative app Viidure:

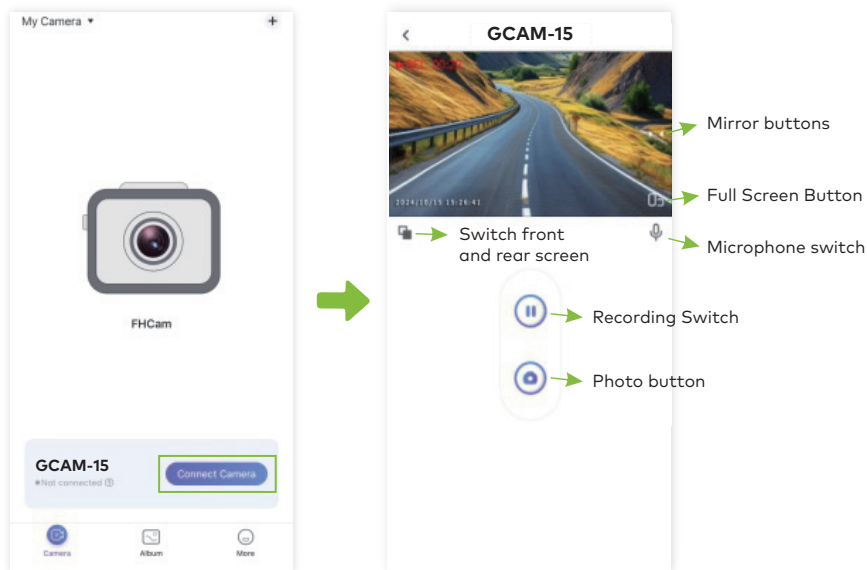


Step 2: Connect to the Dashcam

- a. Turn on the Wi-Fi of the dashcam.
- b. Open your smartphone's Wi-Fi settings.
- c. Connect to the Wi-Fi network: "GCAM-15".
- d. Enter the password: 12345678



- e. Open the app and click "connect camera."
- f. Then, go directly to settings and format the SD card. This is crucial for proper operation. Without formatting, recording may fail.



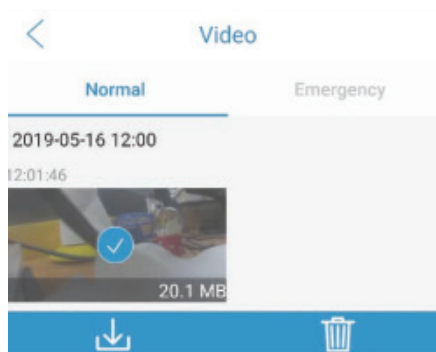
## Key Functions

### 1. Downloading Video or Photo

- a. Go to the app's recording screen to select the Video or Photo gallery.



- b.** Press and hold the preferred video/photo to select it, then press the download icon to download the file.



## **2.** Emergency Recording

- a.** An audio alert will sound when the emergency recording starts.
- b.** The device begins saving emergency recordings when impact is detected.

## **3.** Format SD Card

- a.** All data will be deleted. Back up important data to prevent unwanted files from being deleted.
- b.** Go to Settings and select "Format Memory Card."

## **4.** Parking Monitoring

- a.** Around-the-clock protection and surveillance when the ignition is turned off, and the car is parked.
- b.** The G-sensor triggers Parking Monitoring.
- c.** Go to (⚙️) Settings and choose Parking Monitor. Then, select the preferred mode (Low / Middle / High).
- d.** Press "Back" to exit the setting menu.

## **5.** Timelapse

To record long-duration videos by compiling a series of single pictures over a period of time.

## Functions Table

Settings	Low voltage Protection	Low voltage protection function stops the Dashcam from drawing power, when the vehicle battery voltage is below the threshold value.
	Volume	Mute / Low / Middle / High
	Factory Reset	Performing factory reset will restore the DVR to the Dashcam's default settings.
	Format Memory Card	All data will be deleted. Backup data to prevent unwanted files from being deleted.
Video / Image	Video Coding	H.264/TS
	Resolution	2K (2560 * 1440) + 1K (1920*1080)
	Loop Recording	Supported
	Parking Monitor	Supported
	Time-lapse	Supported
	G-sensor	Supported
	GPS	Supported
Playback	Delete recorded video/photo	Video & Photo

## Package Contents

Front and Rear Dashcam x1

Rear Camera Cable x1

Power Supply Wiring Harness (ACC Hardwire Kit) x1

3M Sticker x1

Charging Adapter x1

GPS Wire x1

## Disposal

This product must not be disposed of as unsorted household waste. It is important to separate such waste for proper treatment and recycling, in compliance with local waste management regulations.



## Warranty

Products that you buy directly from our **Green Lion** website or shop come with a 24-month warranty.

When you buy **Green Lion** products from any of our approved sellers, you only get a 12-month warranty. If you want to extend this warranty, go to our website at [\*\*https://www.greenlion.net/warranty\*\*](https://www.greenlion.net/warranty) and fill out the form with your information. Don't forget to upload a picture of the product too. After we've checked and accepted your request, we'll send you an email to confirm that your product's warranty has been extended.

For more info, please check:  
[\*\*https://www.greenlion.net/warranty\*\*](https://www.greenlion.net/warranty)

## Contact Us

If you have any questions about this Privacy Policy, please contact us at:

Website: [\*\*https://www.greenlion.net/\*\*](https://www.greenlion.net/)

Sales: [\*\*sales@greenlion.net\*\*](mailto:sales@greenlion.net)

Service Support: [\*\*Support@greenlion.net\*\*](mailto:Support@greenlion.net)

Telegram: [\*\*@greenlion\\_global\*\*](https://t.me/greenlion_global)

Instagram: [\*\*@greenlion\\_global\*\*](https://www.instagram.com/greenlion_global)