



**Powerology**

**12-IN-1 USB-C  
Multi-Port Hub**

SKU: PWYSTC8721GY



# Table of Contents

Specifications	2
Product Overview	2
Usage Instructions	3
Device Compatibility	4
Frequently Asked Questions	5
Safety Precautions	6
Disposal	7
Warranty	8
Contact Us	8

## Specifications

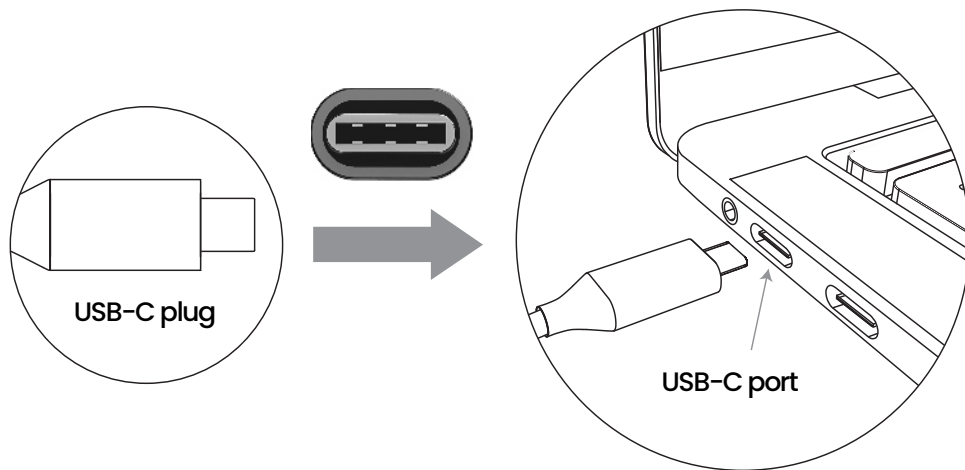
Model Number	PWYSTC8721
Material	Aluminum Alloy/ABS
HDMI	4K@60Hz
DP	4K@60Hz
USB-C Input	100W Max
USB-C Data	V10 ,3.2Gbps
USB-A Data	V10 ,3.2Gbps
USB-A1/USB-A2 Data	V480 ,2.0Mbps
SD/ Micro SD	480Mbps
Audio	3.5mm Audio & Mic
Compatibility	Android, iOS, Windows, Mac
Product Size	14*39.6*129mm
Product Weight	80g

## Product Overview

The Powerology 12-IN-1 USB-C Multi-Port Hub is a versatile and compact solution for expanding the connectivity of your devices. Featuring 12 ports, it allows you to connect a wide range of peripherals through a single USB-C connection. This hub supports 4K Ultra HD output, providing high-resolution video for dual display setups, ideal for multi-tasking or presentations. With 100W PD (Power Delivery), it enables fast charging while in use, keeping your devices powered. High-speed data transfer at 10Gbps and 1000Mbps Gigabit Ethernet ensures quick, stable connections for data and internet access.

Additionally, the pass-through charging capability ensures your device charges while connected to the hub without the need for a separate charger. Designed for universal compatibility, this multi-port hub is plug-and-play, with no need for additional software installation. It's a perfect accessory for laptops, tablets, or other devices with USB-C ports. Its compact aluminum design makes it durable and portable, making it an excellent addition to any workspace, whether at home, in the office, or on the go.

## Usage Instructions



- 1.** Ensure that your equipment and connection cables are functioning correctly before use.
- 2.** The USB-C interface supports both forward and reverse plug-and-play functionality, meaning there is no need to install drivers for the HUB.
- 3.** When removing the device, follow the system's specifications to prevent data loss and avoid potential damage to the equipment.
- 4.** We do not recommend using the USB-A interface to charge other devices, as the current is low, which results in slow charging speeds.
- 5.** If the product does not work properly, please follow these troubleshooting steps:
  - 5.1** Confirm whether the model of your original equipment is compatible with the product.

**5.2** Verify that both the original equipment and connecting cable are in good working condition.

**5.3** Try replacing the equipment or reconnecting the cable to ensure proper operation.

**5.4** If issues persist, please contact us through the platform where the product was purchased for further assistance.

## **Device Compatibility**

### **1. Compatibility with Laptops:**

This product is compatible with a wide range of laptops from various brands. Below is a list of specific models:

#### **1.1 Apple:**

MacBook Pro (2015–2024)

MacBook Air (2018–2024)

#### **1.2 Huawei:**

MateBook X

MateBook X Pro

MateBook E and more (2019–2024)

#### **1.3 ASUS:**

Lingyao 3 / Pro / U306 / U321 / U410 / ROG series

Lingyao X series / U5100UQ, and more models

#### **1.4 Lenovo:**

Xiaoxin Air 12-inch / Yoga 5 Pro / 6 Pro / 900 series

Rescuer Y7000 / Y7000P / Y9000K / ThinkPad X1 and others

#### **1.5 HP:**

Shadow Elf 4 Pro / Pavilion x2 / Spectre 13

EliteBook Folio G1050 / 1 G / Envy series and more

#### **1.6 Xiaomi:**

Air 13.3 / 12.5 inches, Pro 15.6 inches

Xiaomi Gaming Book and other models

### **1.7 Samsung:**

Notebook series / GalaxyBook series

### **1.8 Microsoft:**

SurfaceBook 2 / Surface Go

### **1.9 Dell:**

XPS13 / XPS15 / Lingyue 7000 / 5000 / G3 / G5 / G7, and more

## **2. Compatibility with Mobile Phones:**

This product is also compatible with a variety of mobile devices, ensuring seamless connection and use with numerous models from popular manufacturers:

### **2.1 Samsung:**

Samsung Galaxy S8 / S8+ / S9 / S9+ / Note 9/8 / S10 / S10+ and newer models

### **2.2 Huawei:**

Mate 10/10 Pro / 20/20 Pro / 20X / Rs / P20 / P20 Pro / P30 / P30 Pro / Honor 20 / Note 10 and more

### **2.3 Microsoft:**

Microsoft 950XL / Microsoft 950 and newer

### **2.4 LG:**

LG FGF700(G5) / V300L and more models

### **2.5 HTC:**

Ultra / UTC / and newer

### **2.6 OPPO:**

R17 Pro / and newer models

## **Frequently Asked Questions**

**Q.1** Why doesn't my mobile hard drive work anymore?

**Answer:** Mobile hard drives, including both mechanical hard disks and solid-state drives (SSDs), are high-power devices.

When operating at full load, the power requirements typically range from 2 to 10 watts. To ensure these devices function correctly, a stable external power supply is necessary. For uninterrupted performance, especially with high-power devices like hard drives, it is recommended to use a suitable PD (Power Delivery) charger to provide the required power. In contrast, smaller devices like USB drives, mice, and keyboards consume much less power and can be plugged directly into most standard ports without issues.

**Q.2** Why does the product feel hot when used?

**Answer:** All electronic products generate heat during operation, especially when they are used extensively. The body of this product is made from an aluminum alloy, which is designed to efficiently conduct heat away from the device's core and expel it to the surface. When fully loaded, the surface temperature of the aluminum shell can reach approximately 55°C, whereas the ambient temperature in a typical environment is around 25°C. According to our sources, the metal parts of the equipment should not exceed 60°C in the short term. Therefore, the temperature you feel during use is within the safe, acceptable range for the device. It is normal for the product to get warm, and this does not pose any risk. Feel free to continue using it as usual.

## Safety Precautions

- 1. Corrosive Environments:** Do not place the product in environments with corrosive substances or chemicals that could damage its components.
- 2. Extreme Environmental Conditions:** Avoid using the product in environments with extreme temperatures (either too high or too low), excessive humidity, dust, or prolonged exposure to direct sunlight. Additionally, ensure the product is kept away from any fire or heat sources to prevent potential hazards.

- 3. Ambient Temperature Range:** The product is designed to operate within an ambient temperature range of 0°C to 45°C. Ensure that the temperature in the area where the product is used remains within this range for optimal performance and safety.
- 4. Water and Fire Exposure:** Keep the product away from water or any other liquid to avoid electrical damage. Do not expose it to fire or any direct heat sources.
- 5. Children's Safety:** Keep the product out of reach of children. It may contain small parts or present other hazards if mishandled by young users.
- 6. Product Disassembly and Repairs:** Do not attempt to disassemble, puncture, or repair the product yourself. Unauthorized modifications or repairs could compromise its safety and void any warranties.

## Disposal

This product must not be disposed of as unsorted household waste. It is important to separate such waste for proper treatment and recycling, in compliance with local waste management regulations.





## **Warranty**

Products that you buy directly from our **Powerology** website or shop come with a 24-month warranty.

The 24-month warranty applies to products purchased directly from our **Powerology** website or store. If **Powerology** products are bought from any of our verified retailers, then the product is eligible for only a 12-month warranty. To extend your product's warranty, visit our website **powerology.me/warranty** and fill in your details in the provided form along with an uploaded picture of the product to process your request. Once approved, you will receive a confirmation email of the extended product warranty. Upload the required information within 48 hours of purchase to be eligible for a 24-month warranty period.

For more info, please check:  
**powerology.me/warranty**

## **Contact Us**

If you have any questions about this Privacy Policy, please contact us at: **hey@powerology.me**

Website: **powerology.me**

Instagram: **powerology\_official**

Facebook: **powerology.ME**