

PORODO
LIFESTYLE



Porodo Lifestyle

RAPIDSTEAM
Touch Control Steam Mop

SKU: PDHDTB506WH

Table of Contents

Product Overview	2
Specifications	2
Safety Instructions	3
Schematic View	4
Operation Instructions	5
Installation Guide	5
Cleaning and Maintenance	7
Troubleshooting	7
Disposal	8
Warranty	8
Contact Us	8

Product Overview

The Porodo RapidSteam Touch Control Steam Mop is designed for efficient multi-surface cleaning with its high-power 1200W steam function. It features two steam levels for different cleaning needs and a detachable handheld pod for added versatility. The mop ensures edge-to-edge coverage, making it ideal for thorough cleaning of floors, tiles, and more. With a 350ML detachable water tank, it provides continuous steam for quick cleaning, and the touch control allows for easy operation. The sleek design ensures easy assembly, making it a convenient and powerful cleaning solution for your home

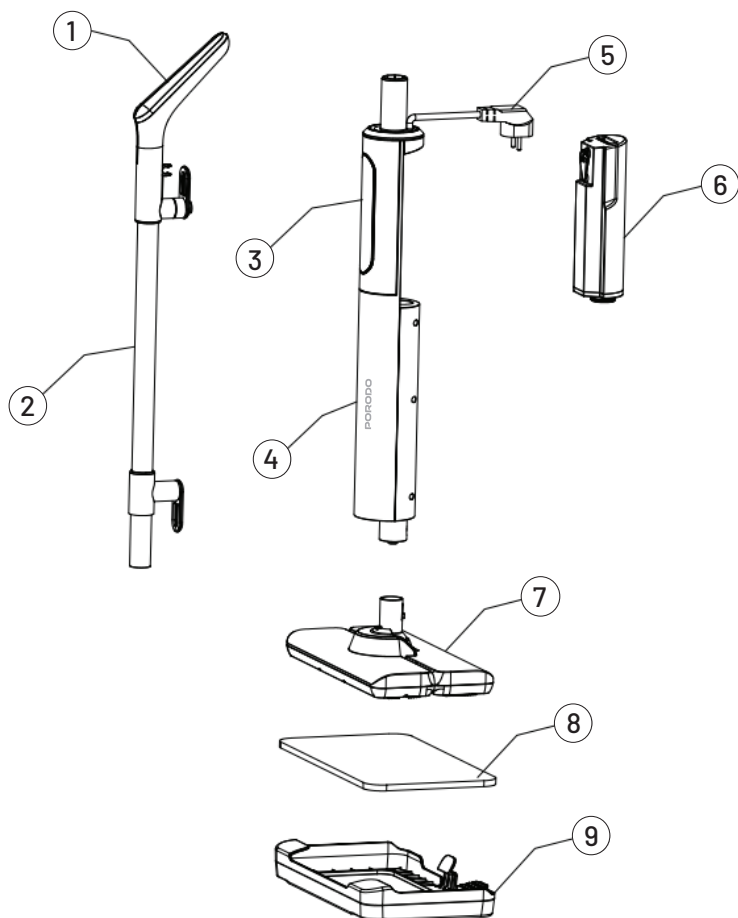
Specifications

Rated Voltage	220-240V
Rated Frequency	50/60Hz
Rated Power	1200W
Water Tank Capacity	350mL
Heating Time	15 seconds
Power Cord	UK 3-Pin Plug
Cord Length	5m
Product Weight	2kg
Product Size	205 × 311 × 1174mm
Model Number	PDHDTB506

Safety Instructions

- 1.** The steam mop is for cleaning floors only. Always follow the instructions in the manual and keep it for future reference.
- 2.** Make sure the steam mop's voltage matches the power supply voltage before using it.
- 3.** Always unplug the steam mop when cleaning, maintaining, or not using it. Pull the plug by the plastic part, not the cord.
- 4.** Never dip the steam mop's main unit in water. Keep it away from heat sources and sunlight to prevent fire.
- 5.** Keep the steam mop away from children to prevent accidents.
- 6.** Do not use the steam mop if it is damaged, has fallen, or is not working properly.
- 7.** Avoid using the mop when the water tank is empty to prevent damage to the heating system.
- 8.** If the power cord is damaged, have it replaced by a professional or the manufacturer's service department.
- 9.** Never point the steam flow towards electrical parts, like inside an oven.
- 10.** People with physical, sensory, or mental disabilities, or those with no experience, should only use the steam mop under supervision and with guidance.
- 11.** Do not leave the steam mop plugged in when not in use.
- 12.** If the mop is damaged or leaking after a fall, do not use it.
- 13.** Keep the mop out of reach of children when in use or cooling down.
- 14.** Be careful around the area marked for high-temperature steam discharge.
- 15.** This product is for home use only, not for industrial use.
- 16.** Do not add rust remover, fragrances, alcohol, or detergent to the water tank, as it may cause damage.
- 17.** After filling the water tank, make sure the cover is tightly closed to prevent leakage.

Schematic View



- 1. Handle
- 2. Aluminum Tube Assembly
- 3. Steam Switch Button
- 4. Main Body
- 5. Power Cord
- 6. Water Tank
- 7. Mop Assembly
- 8. Mop
- 9. Carpet Mop

Operation Instructions

1. Powering On:

1.1. Plug in the power supply.

1.2. The red light will flash slowly to indicate the device is heating.

1.3. Once the heating is complete, the red light will stop flashing.

2. Selecting Steam Levels:

2.1. Touch the red switch to adjust the steam level.

2.2. The green light represents low steam.

2.3. The blue light represents high steam.

2.4. The red light indicates the stop or heating mode.

2.5. The steam level can be adjusted in a cycle; press the switch once to move to the next steam level.

3. Water Tank Instructions:

3.1. Refilling Water Tank:

a. Open the packing box and remove the main unit.

b. Hold the groove of the water tank and pull it back slightly to remove the tank.

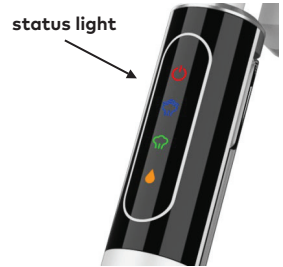
c. Open the sealing cover of the water tank and add water.

3.2. Reinstalling the Water Tank:

a. Close the sealing cover of the water tank.

b. Align the protruding part at the bottom of the tank with the groove on the main unit.

c. Push the tank forward until you hear a "click," confirming the water tank is securely installed.



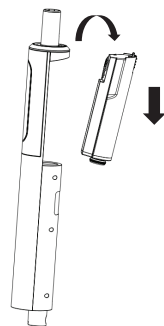
Installation Guide

1. Water Tank Installation and Removal:

1.1. Open the packing box, remove the main unit, press the groove of the water tank, and pull it back slightly to remove the tank.

1.2. Open the sealing cover of the water tank and add water as needed.

1.3. Close the sealing cover of the water tank, align the bottom of the tank with the groove on the main unit, and push the tank forward until you hear a "click," indicating it is securely installed.

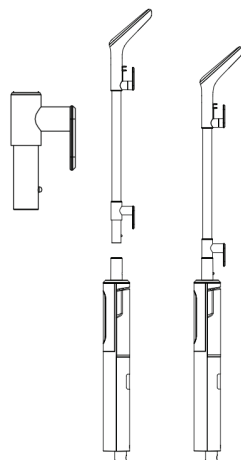


2. Aluminum Tube Installation and Removal:

2.1. Hold the small convex point at the bottom of the aluminum tube and insert the tube vertically onto the top of the main unit.

2.2. The small convex point will fit into the mounting hole on the top of the main unit. Once you hear a "click," the aluminum tube is securely installed.

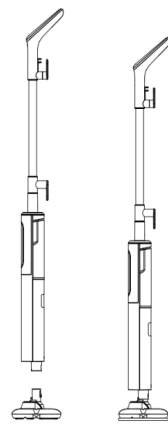
2.3. To remove the aluminum tube, press down the small convex point and pull the tube off the main unit.



3. Mop Assembly Installation Guide

3.1. Remove the main unit and take out the mop assembly. Align the guide slot at the end of the mop assembly with the positioning slot at the bottom of the main unit. Insert the mop assembly into place to attach it securely to the host.

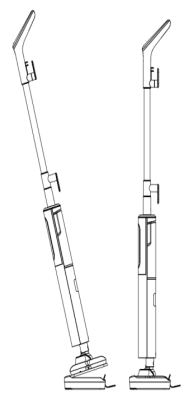
3.2. After assembly, attach the mop to the bottom of the mop assembly.



4. Carpet Drag Installation Guide

4.1. Hold the handle and insert the fuselage into the carpet drag at the angle shown in the figure. Once the first half of the mop is inserted, press down on the handle to secure the mop to the carpet drag.

4.2. To remove the mop, step on the protruding part of the carpet with your foot and pull the handle upward to detach the mop component from the carpet.



Cleaning and Maintenance

1. Water Tank Cleaning:

After removing the water tank from the main unit, pull out the water tank sealing cover. Rinse the water tank with clean water to remove any stains, then put it back and seal it.

Note: Always remove the water tank when the power is turned off or disconnected to avoid burning the main engine.

2. Mop Cleaning:

Remove the mop from the mop head assembly, wash it, and allow it to air dry.

Note: Ensure the mop is removed when the power is turned off or disconnected to prevent steam burns.

Troubleshooting

NO.	Problem	Cause	Solution
1	The product has been working, but the steam discharge is small or there is no steam discharge	1. Water shortage in the water tank. 2. The water supply pipe is blocked. 3. The water is not protected.	1.Add enough water to the tank. 2.Clean the tank accessories. 3.Ensure the water is properly protected. Additional Solution: After adding water to the tank, reset the switch.
2	The host cannot be started	-	Check if the power cord plug is firmly inserted into the socket and if the power switch is turned on.
3	Water tank leakage	-	Check that the tank or tank seal cover is installed properly.

Disposal

This product must not be disposed of as unsorted household waste. It is important to separate such waste for proper treatment and recycling, in compliance with local waste management regulations.

Warranty

Products that you buy directly from our **Porodo** website or shop come with a 24-month warranty.

When you buy **Porodo** products from any of our approved sellers, you only get a 12-month warranty. If you want to extend this warranty, go to our website at <https://www.porodo.net/warranty> and fill out the form with your information. Don't forget to upload a picture of the product too. After we've checked and accepted your request, we'll send you an email to confirm that your product's warranty has been extended.

For more info, please check:
<https://www.porodo.net/warranty>

Contact Us

If you have any questions about this Privacy Policy, please contact us at:

info@porodo.net

Website: <https://www.porodo.net/>

Service Support: **support@porodo.net**

Instagram: **porodo**