

PORODO
LIFESTYLE



Porodo Lifestyle

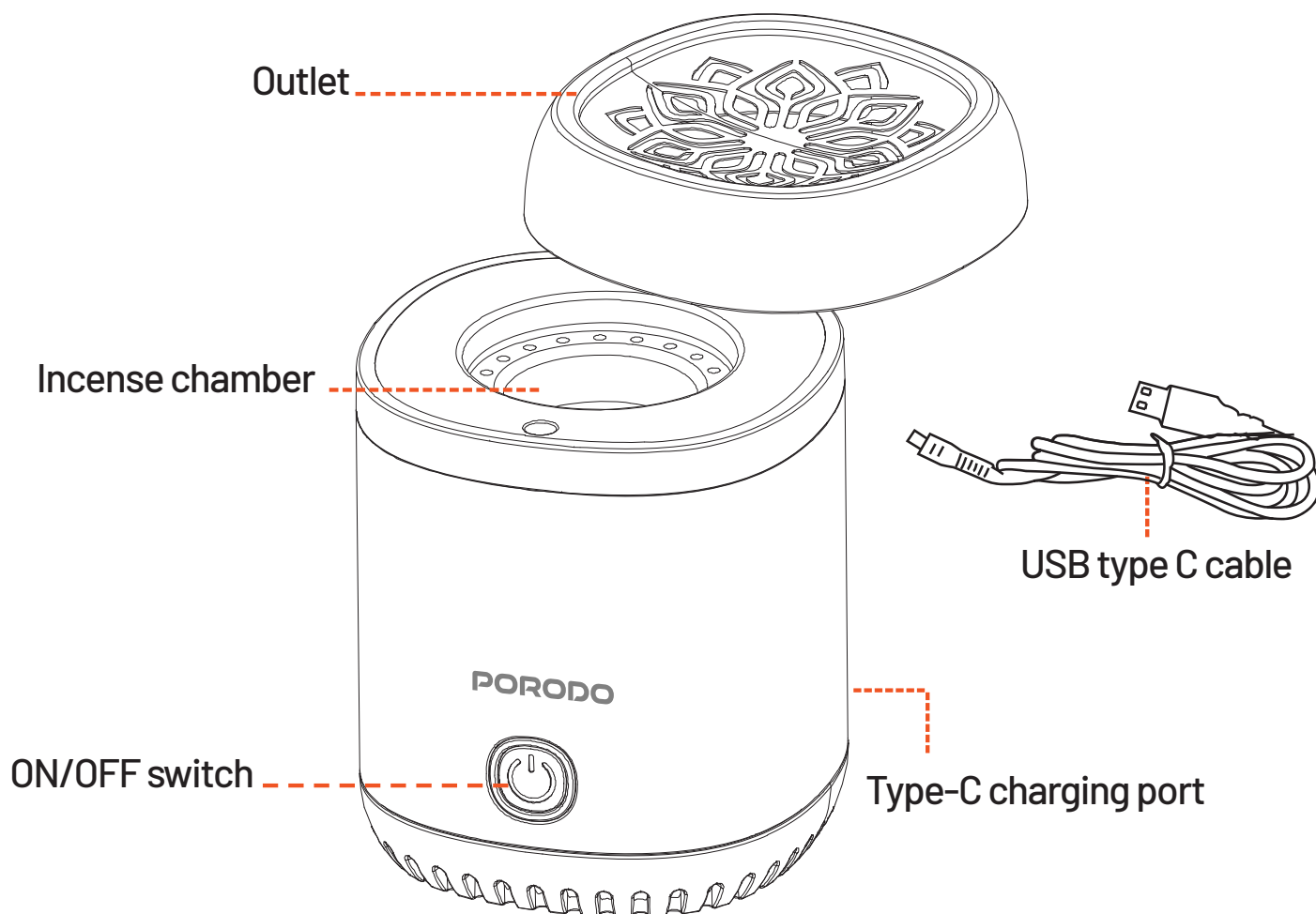
Dreams Mini Incense Burner

SKU: PDWBIBSLBK

Table of Contents

Product Overview	2
Operate Guide	2
Working Modes	3
Indicator Light	3
Warning	4
Specifications	4
Disposal	5
Warranty	5
Contact Us	5

Product Overview

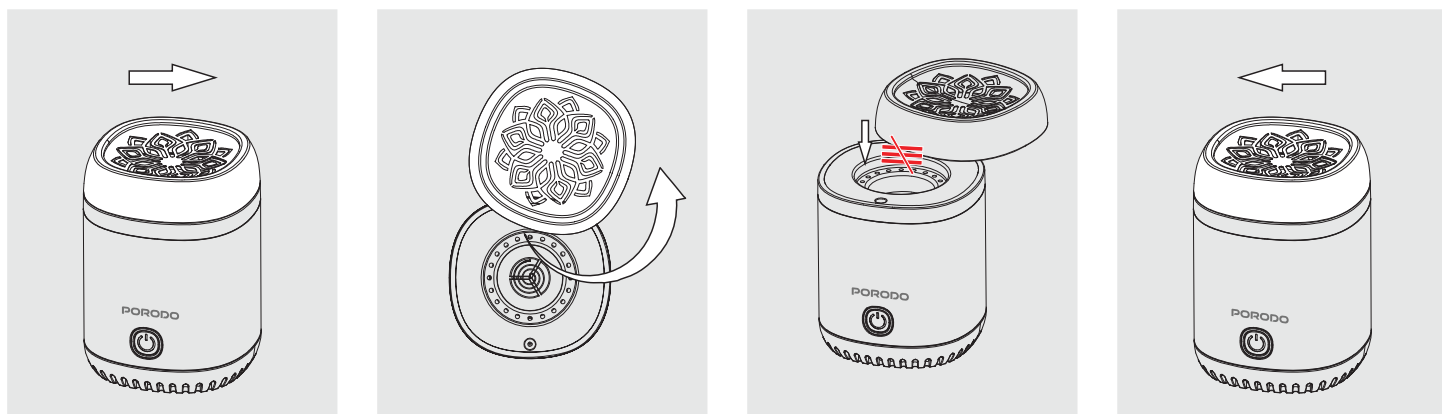


Operate Guide

1. Rotate counterclockwise to open the outlet at the front.
2. Place incense in the chamber.
3. Rotate clockwise to close the outlet.

Note:

- a. When using the incense burner for the first time or if the incense has been used up, please refer to the diagram below for how to add incense.
- b. Do not use the burner while charging, as it has high-temperature protection.
- c. Please keep the product in a vertical position.



4. When you turn on the machine, it will run for 90 seconds and then automatically turn off. During the 90 seconds, you can stop the machine by pressing and holding the button for 2 seconds.
5. The button indicator light remains on while the device is in use and has a breathing effect while charging. The light flashes continuously when the device runs out of power and needs to be charged.

Working Modes

1. After being turned on, the machine will operate continuously for 90 seconds and then turn off automatically. It can be restarted after 30 seconds.
2. If the internal temperature exceeds 90°C, the machine will enter high-temperature protection mode and turn off automatically. It can be restarted after 30 seconds.
3. While the machine is in operation, pressing and holding the button for 2 seconds will stop the machine. It can be restarted after 30 seconds.

Indicator Light

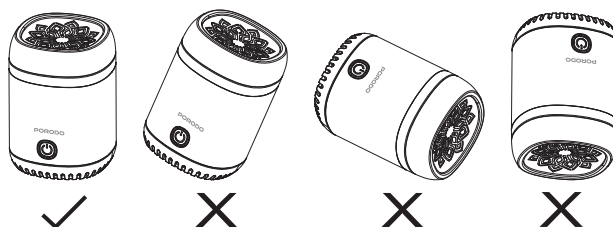
1. When the machine is operating, the button indicator remains on.
2. While charging, the button indicator pulses with a breathing light and stays on when fully charged.
3. When the battery is low, the button indicator flashes quickly. Please charge the device at this time.

Warning

1. After using the incense burner, do not flip or tilt it, as this may cause damage to the product.
2. Do not modify or disassemble the device without authorization, as this will cause damage and void the warranty.
3. Always turn off the machine before changing the incense wood.
4. Keep the device away from children and pets.

Danger:

To avoid burns, do not touch the top of the device while it is operating. After using the device, wait 3–5 minutes for the top to naturally cool down before handling it.



Specifications

Input	DC 5V/2A
Battery Capacity	1800mAh
Rated Power	18W
Charging Port	Type-C
Charging Time	1H
Working Time	x15 Full Burning Session
Noise Level	28dB
Net Weight	250g
Product Size	75 x 75 x 103mm
Model Number	PDWBIB

Disposal

This product must not be disposed of as unsorted household waste.

It is important to separate such waste for proper treatment and recycling, in compliance with local waste management regulations.

Warranty

Products that you buy directly from our **Porodo** website or shop come with a 24-month warranty.

When you buy **Porodo** products from any of our approved sellers, you only get a 12-month warranty. If you want to extend this warranty, go to our website at **porodo.net/warranty** and fill out the form with your information. Don't forget to upload a picture of the product too. After we've checked and accepted your request, we'll send you an email to confirm that your product's warranty has been extended.

For more info, please check:
porodo.net/warranty

Contact Us

If you have any questions about this Privacy Policy, please contact us at:

info@porodo.net

Website: **porodo.net**

Service Support: **support@porodo.net**

Instagram: **[porodo](https://www.instagram.com/porodo)**