



**Green Lion**

## **GR-22 CLIP-ON EARBUDS**

SKU: GNEARBUD

Model No: GL-TWS86

## Table of Contents

Product Overview	2
Specifications	2
Product Sections	3
Setup Guide	3
Charging Case Status Indication	5
Safety Precautions	6
Disposal	6
Warranty	7
Contact Us	7

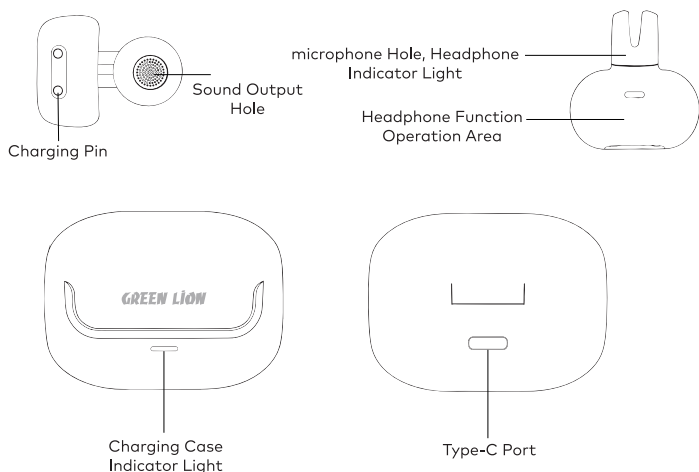
# Product Overview

The Green Lion GR-22 Clip-On Earbuds feature Bluetooth V5.4 for stable connectivity and provide up to 20 hours of playtime with the charging case. With IPX4 waterproofing, they are resistant to water splashes, making them ideal for workouts or outdoor activities. The earbuds include a dual-mic system for clear calls, voice assistant integration, and a USB-C charging port for quick recharging. Designed with clip-on ear comfort, they offer a secure fit for prolonged use.

## Specifications

Model No	GL-TWS86
Material	ABS
Case Battery	300mAh
Earbuds Battery	35mAh
Bluetooth	V5.4
Transmission Range	10 m
Speaker	10 mm
Frequency	20Hz-20kHz
Impedance	32Ω±10%
Sensitivity	3±108 dB
Waterproof	IPX4
Charging Port	USB-C
Charging Time	1.5 hrs
Single Playtime	5 hrs
Playtime With Case	20 hrs
Standby Time	180 days
Product Weight	46.6 g
Product Dimensions	36.5*43.7*56 mm

## Product Sections



## Setup Guide

**Power On:** Press and hold the L or R side for 5 seconds.

**Power Off:** Press and hold the L or R side for 5 seconds (when the earbuds are not connected to any devices).

**Pause & Play:** Double-tap the L or R side.

**Previous Song:** Triple-tap the L side.

**Next Song:** Triple-tap the R side.

**Volume Up:** Press the R side briefly.

**Volume Down:** Press the L side briefly.

**Answer a Call:** Double-tap the L or R side.

**Reject a Call:** Press and hold the L or R side for 2 seconds.

**End a Call:** Double-tap the L or R side.

**Voice Assistant:** Press and hold the L or R side for 2 seconds.

**Low Battery Voice Alert:** When the battery is low, the headphones will announce "Insufficient battery" every 30 seconds.

**Clear Pairing Operation:** To clear the pairing record, ensure the headset is powered on, then press both the left and right earbuds simultaneously 5 times in quick succession. The headset will automatically power off and enter charging mode to reset. This process will clear the pairing information between the headset and your mobile device, while retaining the connection between the left and right earbuds. Upon removing the headset from the charging case, it will automatically search for available devices to pair with.

2. Headphone Connection Pairing Operation Diagram

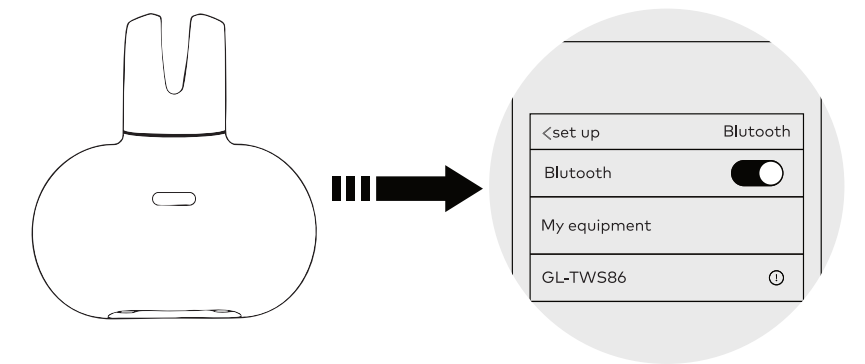
Pairing Steps:

Automatically turn on the headset after leaving the warehouse.

Open the Bluetooth list on your smart device and search for "GL-TWS86" to pair.

After a successful connection, you'll hear "Connect successfully."

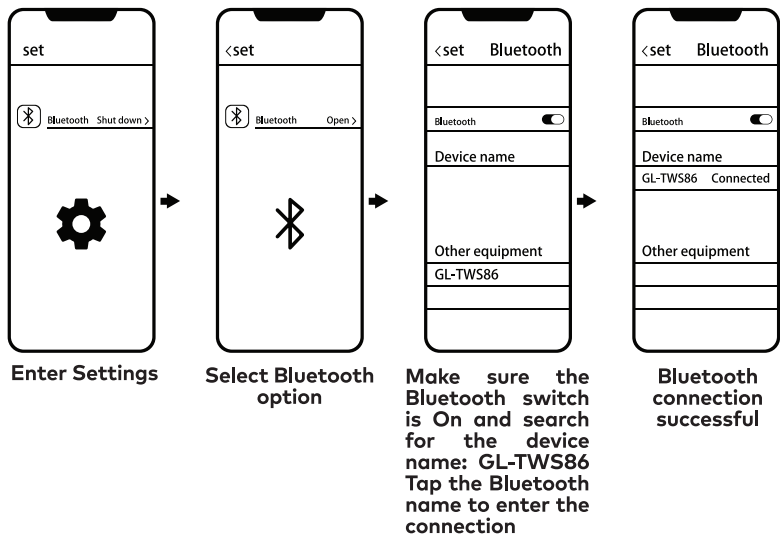
If the connection is lost, re-enter the effective range within 3 minutes, and it will reconnect automatically.



**Notice:** If the product is not used for a long time, charge it before use. After charging is complete, unplug the charging cable to avoid damage from prolonged charging.

3. Warehouse Function Operation UI

The headphones automatically turn on when the cover is opened, and the white light flashes. Start the device search. As shown in the figure below:



Charging Case Status Indication

- 1. When the red light flashes in the charging case, it indicates that the battery is low and charging is required.
- 2. The red light flashes while the charging case is charging, and the indicator light stays on when fully charged.
- 3. When the charging case is charging the headphones, the red light on the headphones remains on, the white light on the charging case stays on, and the full charge indicator turns off.
- 4. When the headphones' battery is low, the prompt "Power is insufficient" will be heard, indicating the need for a charge.

## Safety Precautions

Read all instructions and warnings before use. Improper use may cause damage to the product or personal injury.

The product contains a battery. Avoid exposing it to high temperatures, such as direct sunlight or heat sources, and store it away from strong magnetic fields.

Do not place the product near fire sources. It is prohibited to knock, throw, squeeze, or throw the product into fire. If swelling occurs, do not use the product.

Recommended operating temperature: -10°C to 50°C.

Use the product according to the instructions. Misuse may cause damage to the product or risk personal safety. You are responsible for any consequences.

Only professional personnel should attempt repairs or modifications. Unauthorized repairs may cause further damage.

Do not exceed the product's output current, especially when using electrical appliances. Overloading will cause automatic shutdown.

Regularly clean the charging contacts with a clean cotton cloth to prevent charging issues caused by long-term buildup.

Do not place the product in water or washing machines. If the product has been exposed to water, allow it to dry naturally before use.

## Disposal

This product must not be disposed of as unsorted household waste. It is important to separate such waste for proper treatment and recycling, in compliance with local waste management regulations.

## Warranty

Products that you buy directly from our **Green Lion** website or shop come with a 24-month warranty.

When you buy **Green Lion** products from any of our approved sellers, you only get a 12-month warranty. If you want to extend this warranty, go to our website at **<https://www.greenlion.net/warranty>** and fill out the form with your information. Don't forget to upload a picture of the product too. After we've checked and accepted your request, we'll send you an email to confirm that your product's warranty has been extended.

For more info, please check:  
**<https://www.greenlion.net/warranty>**

## Contact Us

If you have any questions about this Privacy Policy, please contact us at:

Website: **<https://www.greenlion.net/>**

Sales: **[sales@greenlion.net](mailto:sales@greenlion.net)**

Service Support: **[Support@greenlion.net](mailto:Support@greenlion.net)**

Telegram: **[@greenlion\\_global](https://www.greenlion.net/)**

Instagram: **[@greenlion\\_global](https://www.greenlion.net/)**