



Green Lion

AUTO-STIRRING MUG

SKU: GNATSTRLMUGCM

Model No: GL-BL12

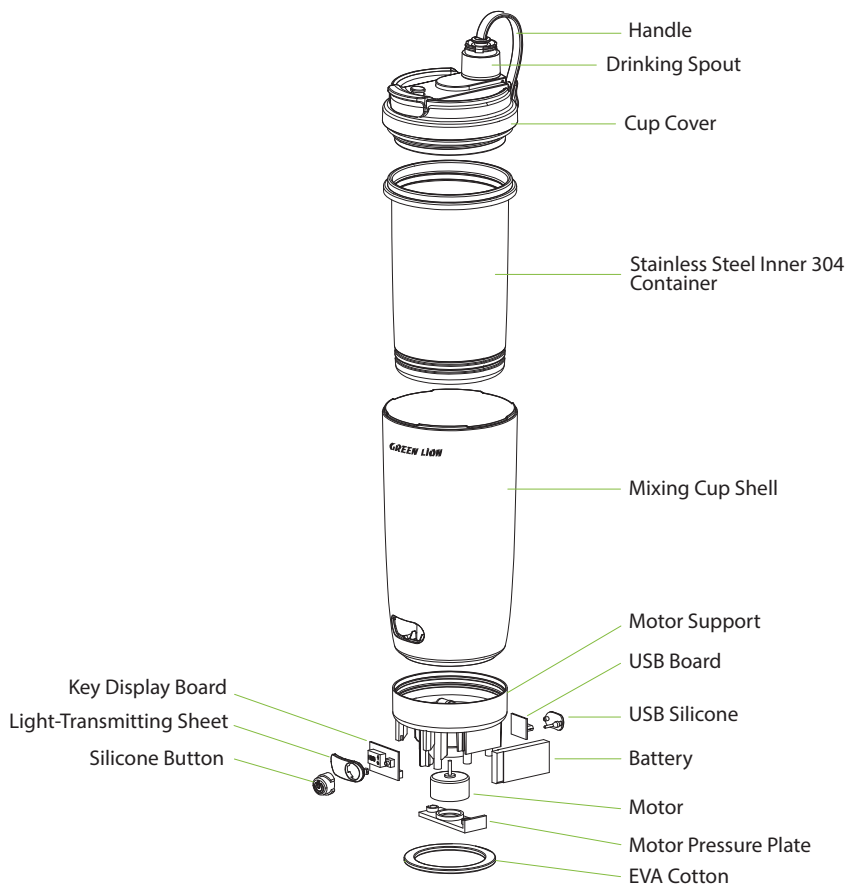
Table of Contents

Product Overview	2
Specifications	3
Electric Diagram	4
Charging Instructions	4
Instructions for Use	5
Safety Precautions	6
Troubleshooting	8
Maintenance and Repair	9
Material Standards	9
Disposal Precautions	10
Material Content Table	11
Warranty	12
Contact Us	12

Thank you for choosing our product. To ensure you make the most of its exceptional performance, please take the time to carefully read this manual before use. By doing so, you will be able to fully utilize its features, bringing convenience and comfort to you and your family.

We recommend keeping this manual for future reference.

Product Overview

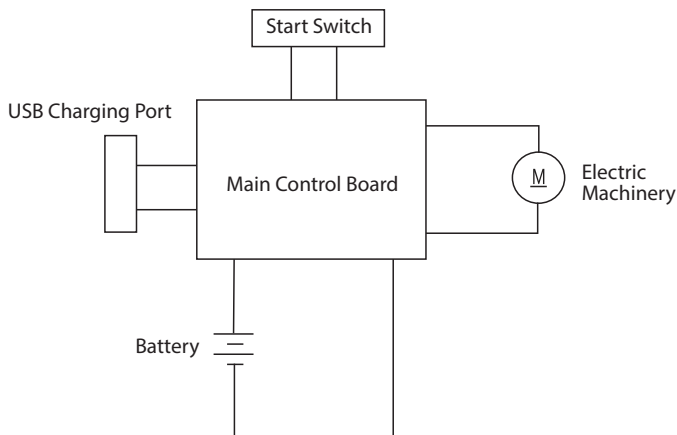


Specifications

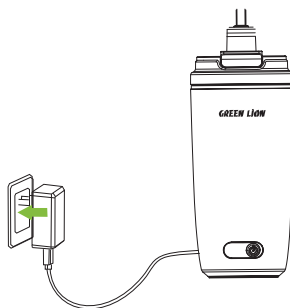
Model No	GL-BL12
Material	PP+PC+Silicane
Liner Material	SUS304
Battery	400mAh
Power	2W
Voltage	5V
Motor Speed	6800 RPM
Capacity	350 mL
Warm Water Temp	80°C Max
Charging Port	Type-C
Charging Time	1-2 Hrs
Stirring Cycle	150 Times
Auto Shut-Off	30 Sec
Product Weight	282 g
Product Dimensions	84*91*207 mm



Electric Diagram



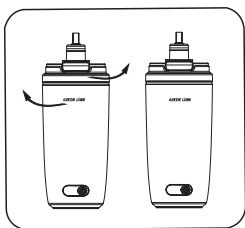
Charging Instructions



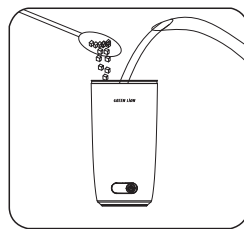
1. Connect one end of an external power source, such as a computer, power bank, or mobile phone charger, to the charging interface on the base using a USB cable. The button indicator light will turn red, signaling that the product is in the charging state.
2. When the digital display on the circuit board reaches 100 %, the battery is fully charged. At that point, simply disconnect the USB cable from the power supply to complete the charging process.

3. The battery typically takes 1-2 hours to charge, though this may vary slightly due to seasonal factors.
4. To preserve the battery's lifespan, be sure to charge it at least once every three months. Failing to do so may reduce its overall performance.
5. Regularly charging and discharging lithium batteries is essential for maintaining their optimal functionality.

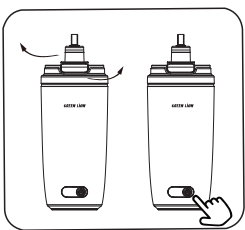
Instructions for Use



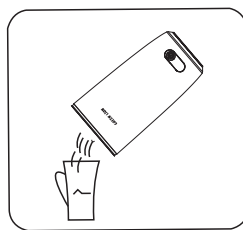
1. Twist the mixing cup and lid counterclockwise to remove and clean them thoroughly. Wipe the mixing position on the machine base to ensure it is clean.



2. Add coffee powder and sugar into the mixing cup, then pour in an appropriate amount of water (the maximum water level is about 400 milliliters).



3. Tighten the cup lid clockwise, then double-click the start button. The stirring magnet will begin rotating. After 30 seconds, the machine will automatically stop. (o stop the machine before 30 seconds, press the button halfway.




4. After mixing, you can either lift the machine and drink directly from it, or unscrew the cup lid and pour the beverage into another cup for drinking.


Reminder:


- a. Ensure that the water temperature does not exceed 80°C to avoid damaging the stirring magnet, which has a temperature resistance of 80°C. Prolonged exposure to high temperatures may cause the magnet to lose its functionality.
- b. Please follow the instructions above to ensure proper use and avoid any damage to the product caused by incorrect handling.
- c. Do not operate the product without water, as this may lead to damage.

Safety Precautions

To ensure safe use and prevent personal injury or property damage to yourself or others, please make sure to follow the safety precautions below. Improper use or failure to heed these warnings may result in accidents.

 Prohibit	Keep out of reach of children and ensure that children do not operate the product alone. The mixing cup contains a stirring magnet, which could be harmful if ingested by children or if they are exposed to hot beverages.
	This product should not be used without a load or when overloaded. The maximum mixing time is 30 seconds per use. After this period, the product will automatically stop. To continue mixing, restart the device by pressing the button again.
	While the product is in operation, never unscrew the cup lid or insert hands or any hard objects into the mixing cup to avoid accidents.
	Avoid placing the product directly on fire or near heat sources or ignition points, as this could cause damage, malfunction, or even present a danger.
	Do not place any part of this product into dishwashers, disinfection cabinets, microwave ovens, or other cleaning appliances with temperatures exceeding 60°C, as this could cause deformation due to heat.

 Prohibit	<p>The beverage mixed with this product should be consumed or stored in a timely manner. It is forbidden to store it in the mixing cup for more than 6 hours, as this may lead to spoilage and odor, which could be harmful to health.</p>
	<p>Please avoid pouring food during the stirring and rotating process.</p>
	<p>The maximum operating temperature of this product should not exceed 80°C.</p>
	<p>This product should not be used by children, individuals with intellectual disabilities, or those with physical impairments.</p>
	<p>After opening the packaging, immediately dispose of the plastic bag in the trash to avoid choking hazards for children.</p>
	<p>This product is designed for its intended purpose only and should not be used for other functions.</p>
	<p>Only use the accessories provided with this product. Do not use any attachments or accessories that are not part of the product.</p>
	<p>Do not place hot water above 50°C in the mixing cup, as the pressure inside the cup may cause hot air to spray out, potentially leading to burns and water leakage.</p>
	<p>After each use, rinse the product promptly. Use a mild cleaning agent with a soft cup brush, then dry the product. Do not use abrasive powders, metal cleaning pads, cleaning oils, or chlorine-based cleaners, as they may scratch, rust, or corrode the surface.</p>

 Notice	<p>This product uses a battery to power a DC motor, and the battery can be charged by connecting the device to an external power source via the charging cable.</p>
	<p>Ensure the mixing cup and lid are fully tightened to prevent water leakage during operation. Do not exceed the maximum fill line in the mixing cup when adding ingredients.</p>

Troubleshooting



Notice

This product is equipped with an overheat protection device. If it is not used properly or if the motor becomes severely overloaded, the product will automatically stop to protect itself. The red indicator light on the button will flash to signal this.

If the stirring magnet becomes stuck during use, immediately press the button to stop the stirring. Manually move the stirring magnet to the center to resume operation.

After using the product, ensure that you turn off the main power switch.

When the battery level of the host dock is low, be sure to charge it in a timely manner to maintain optimal performance.

Problem	Possible Cause	Solution
The mixing cup is leaking water.	The mixing cup is too loose.	Tighten the mixing cup.
	The seal ring is either not installed or not installed properly.	Reinstall the sealing ring
Double-click the button to start the switch, but it doesn't work.	The stirring magnet is not centered.	Move the stirring magnet to the center of the inner container.
The machine suddenly stops working during operation without any warning.	Water is required for operation; running the empty cup may cause the stirring magnet to be ejected.	Move the stirring magnet to the center of the inner container and then start adding water.
The mixing cup is not working.	The battery level is low.	USB charging: when the display shows 100 %, the charge is complete.

Maintenance and Repair

After use, it is recommended to clean the product immediately to prevent food residue from spoiling and causing odors. For cleaning, follow the steps below:

Whole Machine Cleaning:

Add half a cup of water to the cup, and if necessary, a small amount of detergent. Stir for about 30 seconds following the usual stirring method.

Mixing Cup Cleaning:

Unscrew the mixing cup counterclockwise, open it, and rinse it under running water. Alternatively, place it in warm water with detergent for cleaning. Ensure the water temperature does not exceed 40°C.

Host Cleaning:

Do not immerse the host part in water or rinse it directly! To clean the host, use a damp cloth (wrung out) to wipe it clean.

Drying and Storing:

After cleaning, place the machine and its components in a ventilated area to dry. Once dry, reassemble and store them properly.

Important:

This product and its components must not be placed in a disinfection cabinet for high-temperature disinfection, nor should they be soaked in boiling water. Doing so may cause serious deformation or damage to the product.

Material Standards

Material Details for Food Contac				
No	Component	Metrial	Type	Standard
1	Shell	PP	Plastic	GB2023-4806.7
2	Liner	Stainless Steel	Hardware	GB2023-4806.9
3	Cup Cover	Silicone	Silicone	GB2016-4806.11

Disposal Precautions

Please support the recycling of rechargeable batteries (lithium-ion batteries).



The battery used in this product is a dedicated rechargeable battery and is not compatible with other devices. Once removed, do not attempt to charge the battery.

- Do not dispose of the battery by throwing it into a fire, as it may overheat.
- Avoid puncturing the battery with sharp objects, dropping it, or attempting any disassembly or modification.
- Never connect the positive and negative terminals of the battery with metal objects.
- Store the battery away from items such as necklaces, hairpins, or other metallic objects to prevent accidental contact.
- Refrain from charging, using, or storing the battery in high-temperature environments, such as near a fireplace or under direct sunlight.

Failure to follow these guidelines could lead to potential hazards, including overheating, fire, or rupture of the battery.


Keep the removed rechargeable battery out of the reach of infants and young children to prevent accidental ingestion.

- If the battery is accidentally swallowed, seek medical attention immediately.
- In the event of battery fluid leakage, do not touch the liquid with bare hands. Follow these guidelines for proper handling.
- If battery fluid comes into contact with the eyes, there is a risk of blindness. Do not rub your eyes. Immediately rinse with water and seek medical attention. If the battery fluid comes into contact with skin or clothing, it may cause irritation or injury. Rinse the affected area with clean water. If discomfort persists, seek medical attention immediately.
- Only dispose of products in accordance with proper disposal procedures. Failure to follow these guidelines could result in accidents such as fire, electric shock, or injury. For repairs (excluding battery replacement), please consult the store where you purchased the product.

The lithium-ion battery used in this product is a valuable resource that can be recycled and regenerated. After use, please remove the lithium-ion battery and hand it over to a professional recycling organization for proper processing.

Material Content Table

To protect the environment, it is your responsibility as a consumer to separate this product or its components from household waste. Please ensure they are sent to qualified recycling centers for proper classification, dismantling, recycling, and reuse, in accordance with relevant national regulations.

Harmful Material Content						
Component Name	Hazardous Substances					
	Pb	Hg	Cd	Cr(VI)	PBB	PBDE
Plastic Components	○	○	○	○	○	○
Motor	○	○	○	○	○	○
Wires	○	○	○	○	○	○
Silicone Parts	○	○	○	○	○	○
Liner	X	○	○	○	○	○
PCB	X	○	X	○	○	○
Packaging	○	○	○	○	○	○
<p>O: Indicates that the content of hazardous substances in all homogeneous materials of the component is within the limits specified in GB/T 26572.</p> <p>X: Indicates that the content of hazardous substances in at least one homogeneous material of the component exceeds the limits specified in GB/T 26572.</p> <p>*: Indicates that only this particular part of the product model contains the specified component.</p>						
 Environmental protection usage period	The "environmental protection service life" of this product is 10 years, as determined by our company based on the product's design characteristics. This service life is only valid when the product is used under normal conditions as described in the product manual.					

Warranty

Products that you buy directly from our **Green Lion** website or shop come with a 24-month warranty.

When you buy **Green Lion** products from any of our approved sellers, you only get a 12-month warranty. If you want to extend this warranty, go to our website at **<https://www.greenlion.net/warranty>** and fill out the form with your information. Don't forget to upload a picture of the product too. After we've checked and accepted your request, we'll send you an email to confirm that your product's warranty has been extended.

For more info, please check:
<https://www.greenlion.net/warranty>

Contact Us

If you have any questions about this Privacy Policy, please contact us at:

Website: **<https://www.greenlion.net/>**

Sales: **sales@greenlion.net**

Service Support: **Support@greenlion.net**

Telegram: **[@greenlion_global](https://t.me/greenlion_global)**

Instagram: **[@greenlion_global](https://www.instagram.com/greenlion_global)**