

PORODO
LIFESTYLE



Porodo Lifestyle
DEEP FACIAL
BLACKHEAD REMOVER

SKU: PDSX118WH



Table of Contents

Product Overview	2
Specifications	2
Clean the Deep Skin System	3
Principles of Beauty Equipment	3
Matching Product Functions	4
Packing List	5
Important Notes Before use	5
Setup Guide	6
Safety Precautions	8
Charging Methods	8
Disposal	9
Warranty	10
Contact Us	10

Product Overview

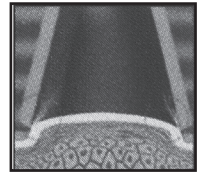
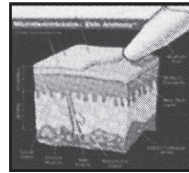
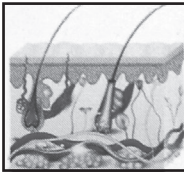
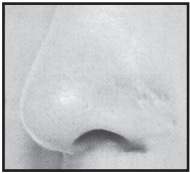
The Porodo Deep Facial Blackhead Remover offers a comprehensive skincare solution with advanced features. It includes microbubble therapy for deep cleansing, a hydro-infusion system, and a gentle heat therapy function. The device features an adjustable suction power with six replaceable heads, allowing personalized treatments. Its heating mode enhances the blackhead removal process, ensuring effective and gentle skincare. Additionally, the microbubble water spray helps hydrate and cleanse the skin, providing a smooth and refreshed appearance.

Specifications

Input	5V/2A
Rated Power	2.8W
Battery Capacity	300mAh
Charging Interface	Type-C
Suction Power Levels	30kPa / 50kPa / 75kPa
Product Size	56 × 116 × 248mm
Product Weight	175g
Model Number	PDSX118

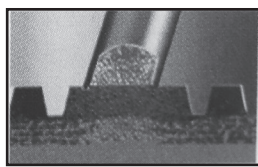
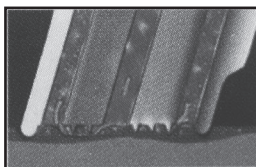
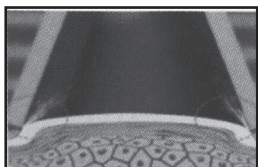
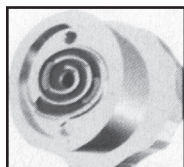
Clean the Deep Skin System

1. Regular use of cosmetics helps achieve smooth and elastic skin.
2. When there are traces of cosmetics or other impurities on the skin, hair follicle issues may arise.
3. In such cases, no cosmetic product will effectively eliminate the follicular buildup.
4. The skincare device deeply cleanses hair follicles, removing blackheads and keratin.
5. It restores healthy, beautiful skin.



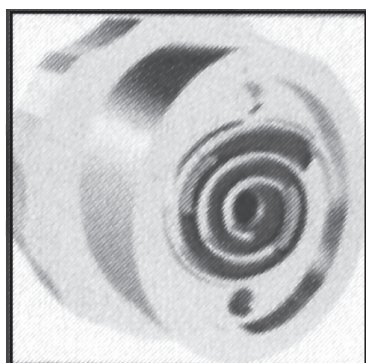
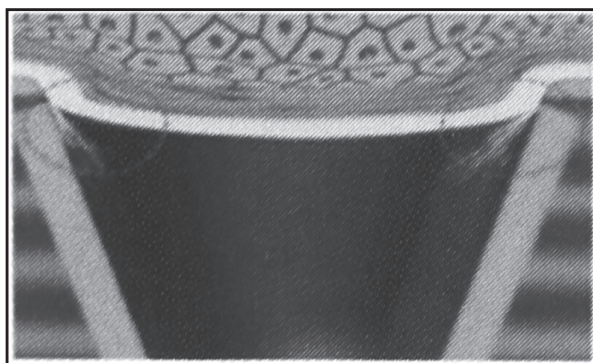
Principles of Beauty Equipment

The multifunctional ultra-micro bubble beauty device creates a vacuum using negative pressure, effectively combining ultra-micro bubbles and essence liquid. It directly acts on the skin through a specially designed small spiral suction head, maintaining prolonged contact to enhance the peeling effect. The combination of ultra-micro bubbles and adsorption deeply cleanses the face, removing aging skin cells, excess sebum, and impurities. It also eliminates oil residues in the follicle funnel, while replenishing nutrients to the skin, leaving it moisturized, smooth, and radiant.



Matching Product Functions

1. Removes keratin and provides moisturizing effects to cleanse residual pores.
2. Lactic acid enters the pores in a clockwise direction and has a lipolytic effect, helping to remove blackheads and whiteheads.
3. While removing aged keratinocytes, high-concentration lotion is injected into the treated area.
4. After use, the skin remains hydrated, smooth, and soft.
5. The lotion amount can be adjusted through the supply pipe located in the center of the control head to soften the cells.
6. Absorbs sebum secretions and impurities for care, and vacuum removes dead cells and impurities.



Packing List

1. Instrument body *1
2. Probe *6 (soft probe *3, hard probe *3)
3. USB charging cable *1

Precautions for changing the probe:

After replacing the middle hole tube of the probe, align it with the machine hole position. If not aligned, no bubbles will appear.



1



2



3

Important Notes Before use

1. Remove the solution bottle and inject an appropriate amount of solution.
2. Dock the solution bottle with the instrument.

Reminder:

1. There are 6 types of probes: 3 soft probes and 3 hard probes. The small probe is suitable for small areas (e.g., the nose, nasal wings), while the large probe is designed for larger areas (e.g., cheeks, forehead). Soft probes are ideal for

those with thin and sensitive skin. Choose the appropriate probe based on your skin type and the area you're treating.

2. Always clean the solution bottle before adding a new solution. The solution should not be too thick or too thin; it is recommended to add half of the required amount. Before changing the solution, ensure you understand the applicable skin type and precautions.



1



2

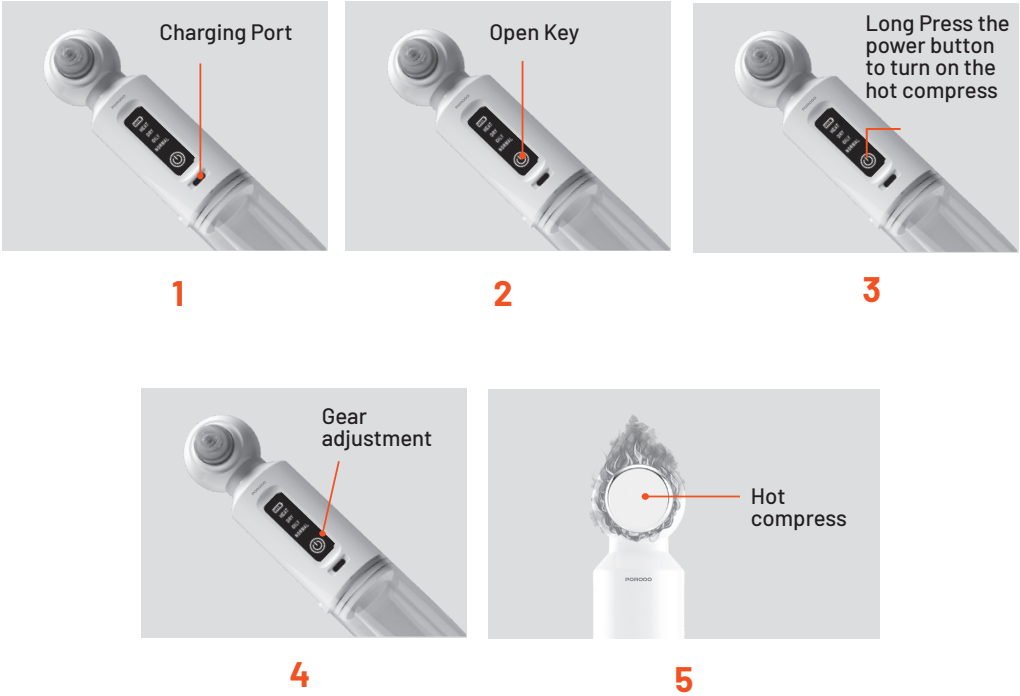
Setup Guide

- 1.** Connect to the charging cable for charging
- 2.** Power on
- 3.** Long press for 2 seconds to turn on
- 4.** Three level suction adjustment, one level hot compress function

Hot compress function: Before use, massage with hot compress to easily open pores and gently soften blackheads and pore stains, helping the beauty device to clean better the skin. After cleaning, using the hot compress function can

accelerate facial blood circulation, promote metabolism, and aid in the absorption of skincare products and nutrients, making the skin moist, delicate, and radiant.

5. Hot compress function



Reminder:

There are 3 levels of suction strength and hot compress function (long press the power button to turn on).

Please choose the appropriate gear based on your own experience when selecting the gear.

Stick to one piece of skin for no more than 2 seconds as much as possible.

During the start-up process, it is strictly prohibited to shake or invert the instrument significantly.

Safety Precautions

A. Precautions during Use

- 1.** Do not use the product for purposes other than its original design.
- 2.** Choose the appropriate probe and gear to avoid skin damage.
- 3.** Excessive use may cause skin irritation. Discontinue use if discomfort occurs.
- 4.** For blackheads, use with a blackhead extraction solution, and limit to once a week.
- 5.** When using facial cleansers or skincare products, ensure they are suitable for your skin type.

B. Matters Needing Attention

- 6.** Avoid using the product in areas with high temperatures, humidity, dust, or exposure to fire, as these conditions may damage the product.
- 7.** When not in use, turn off the power and disconnect the charging cable.
- 8.** If the product has not been used for over seven days, disconnect the battery and store it with the power off.
- 9.** Only charge the product when the battery is low. Frequent discharges may decrease the battery's lifespan and functionality.
- 10.** Do not use chemicals to clean the product.
- 11.** Do not immerse the product in water.
- 12.** Prevent the product from falling or being impacted.
- 13.** Disassembling or repairing the product on your own is prohibited and may void the warranty.
- 14.** Store the product in a place out of reach of children.

Charging Methods

- 1.** Connect the included USB charging cable to the product and a compatible USB power source (such as a USB connector, mobile phone charger, portable power bank, car USB connector, or computer/laptop USB port).

2. It is recommended to use chargers with an output of at least 5V/500mA.
3. The flashing indicator light shows that charging is in progress, while the solid indicator light signals that charging is complete.
4. Always ensure the device is turned off while charging.

Disposal

This product must not be disposed of as unsorted household waste. It is important to separate such waste for proper treatment and recycling, in compliance with local waste management regulations.



Warranty

Products that you buy directly from our **Porodo** website or shop come with a 24-month warranty.

When you buy **Porodo** products from any of our approved sellers, you only get a 12-month warranty. If you want to extend this warranty, go to our website at **<https://www.porodo.net/warranty>** and fill out the form with your information. Don't forget to upload a picture of the product too. After we've checked and accepted your request, we'll send you an email to confirm that your product's warranty has been extended.

For more info, please check:
<https://www.porodo.net/warranty>

Contact Us

If you have any questions about this Privacy Policy, please contact us at:

info@porodo.net

Website: **<https://www.porodo.net/>**

Service Support: **support@porodo.net**

Instagram: **porodo**