

# PORODO



## Porodo

**AQUASPRAY  
MULTIFUNCTIONAL PRESSURE WASHER**

SKU: PDPCWFWT0G



# Table of Contents

Product Overview	2
Specifications	2
Schematic View	3
Operation Instructions	4
After Use	6
Safety Precautions	8
Proper Use	10
Safety Lock	11
Transport	11
Disposal	11
Warranty	12
Contact Us	12

## Product Overview

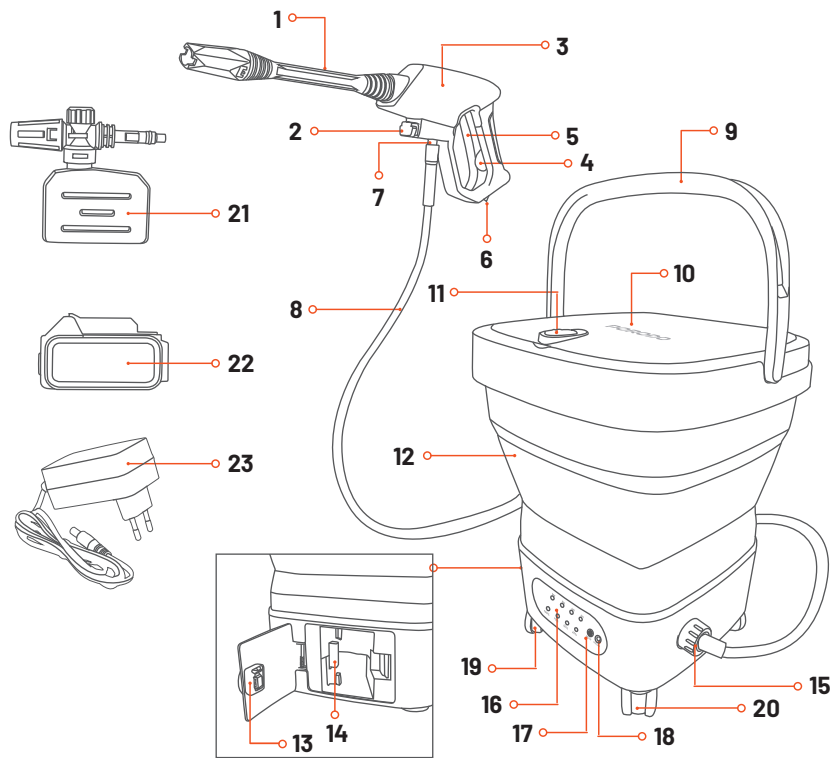
The Porodo Aquaspray Multifunctional Pressure Washer is designed to make your cleaning tasks easier and more efficient. With a large 15L capacity and an adjustable pressure setting, it offers the flexibility needed for various cleaning applications. The washer features a 3-meter water pipe, ensuring you have ample reach, and is equipped with a foam dispenser to enhance your cleaning power. Its foldable design makes it convenient for storage, while the easy transport wheels ensure you can move it effortlessly. Perfect for surface cleaning, garden care, and car washing, the Porodo Aquaspray combines portability and functionality to meet all your cleaning needs.

## Specifications

Charging Voltage	DC 21V
Rated Power	260W
Battery Capacity	3000mAh
Water Pipe Length	3m
Water Flow Rate	3.4L/Min
Water Reservoir Capacity	15L
Max Pressure	32 Bar

Pressure Settings	1.5MPa (Low) to 2.3MPa (High)
Work Pressure	23 Bar
Product Weight	4.2kg
Product Size	27.5 x 33.3 x 33.3cm
Model Number	PDPCWFWT

## Schematic View



1. Jet Nozzle
2. Pushing Button
3. High Pressure Gun
4. Safety Lock
5. Trigger
6. Self-locking Button
7. Water hose interface on the gun
8. High pressure hose (3m)
9. Carrying handle
10. Top cover on the bucket
11. Switch on the cover
12. Water reservoir
13. Battery pack cover
14. battery platform
15. Water hose interface on the bucket
16. Pressure & power level display
17. Pressure levels adjustment button
18. ON/OFF button
19. Universal wheels with brake
20. Universal wheels without brake
21. Foam tank
22. battery pack
23. charger

## Operation Instructions

1. Please wear safety goggles, earmuffs, a protective suit, and non-slip shoes while operating.
2. Attach the 4 wheels to the bottom of the bucket.  
**Note:** Two wheels should have brakes, and two should not. You can arrange the wheels as needed based on your requirements.
3. Push the button and insert one end of the water hose into the gun.
4. Insert the other end of the water hose into the grey plastic fitting on the bucket.
5. Slide the switch to the left to open the cover of the bucket.
6. Place the battery pack into the platform inside the bucket.
7. Close the cover and slide the switch to the right to lock it in place.
8. Slide the switch on the top cover to the right side.
9. Fill the bucket with the proper water (advise filling the capacity to the max level of 14L)
10. Close the top cover and slide the switch on the top cover to the left side.
11. Connect the jet nozzle to the gun.

**12.** Press the On/OFF button.

**13.** Push the safety lock into the handle to unlock the safety lock. Hold and push the trigger to turn on the device. When you push the trigger, you can press the button at the bottom of the gun to turn on the self-locking function. If you turn on the self-locking function, even if you release the trigger, the machine still works.

**14.** You can observe the pressure levels and power level display.

M1 means the pressure is at level 1-1.5 Mpa.

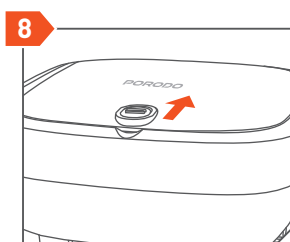
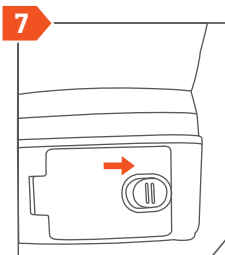
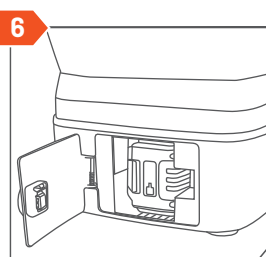
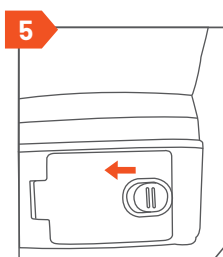
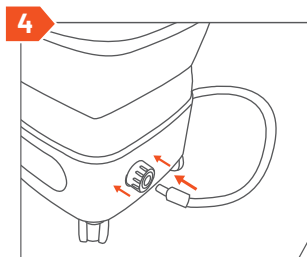
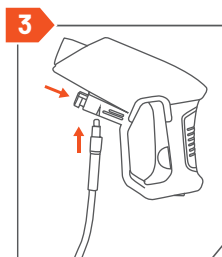
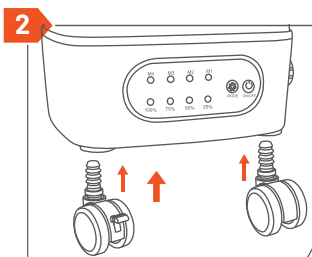
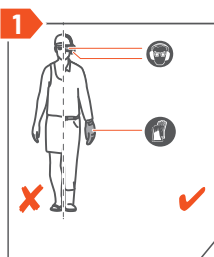
M2 means the pressure is at level 2-2.0Mpa.

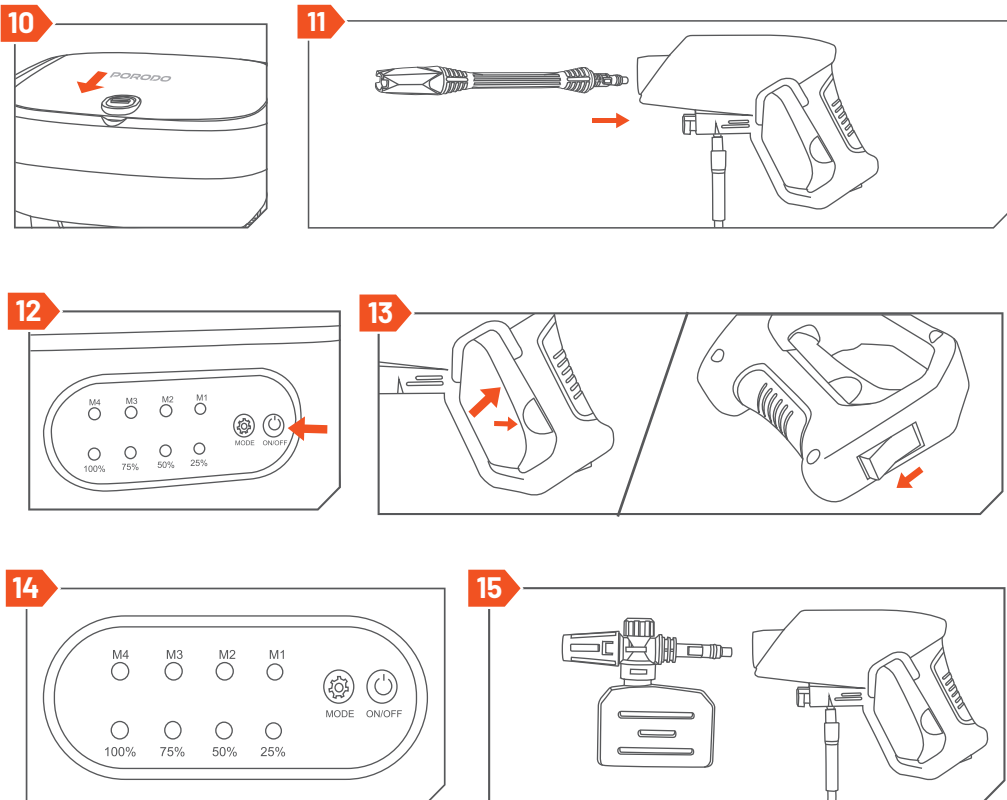
M3 means the pressure is at level 3-2.5Mpa.

M4 means the pressure is at level 4-3.0Mpa.

You can adjust the pressure level through the pressure adjustable button.

**15.** Connect the foam tank to the gun. Push the trigger to spray the foam.

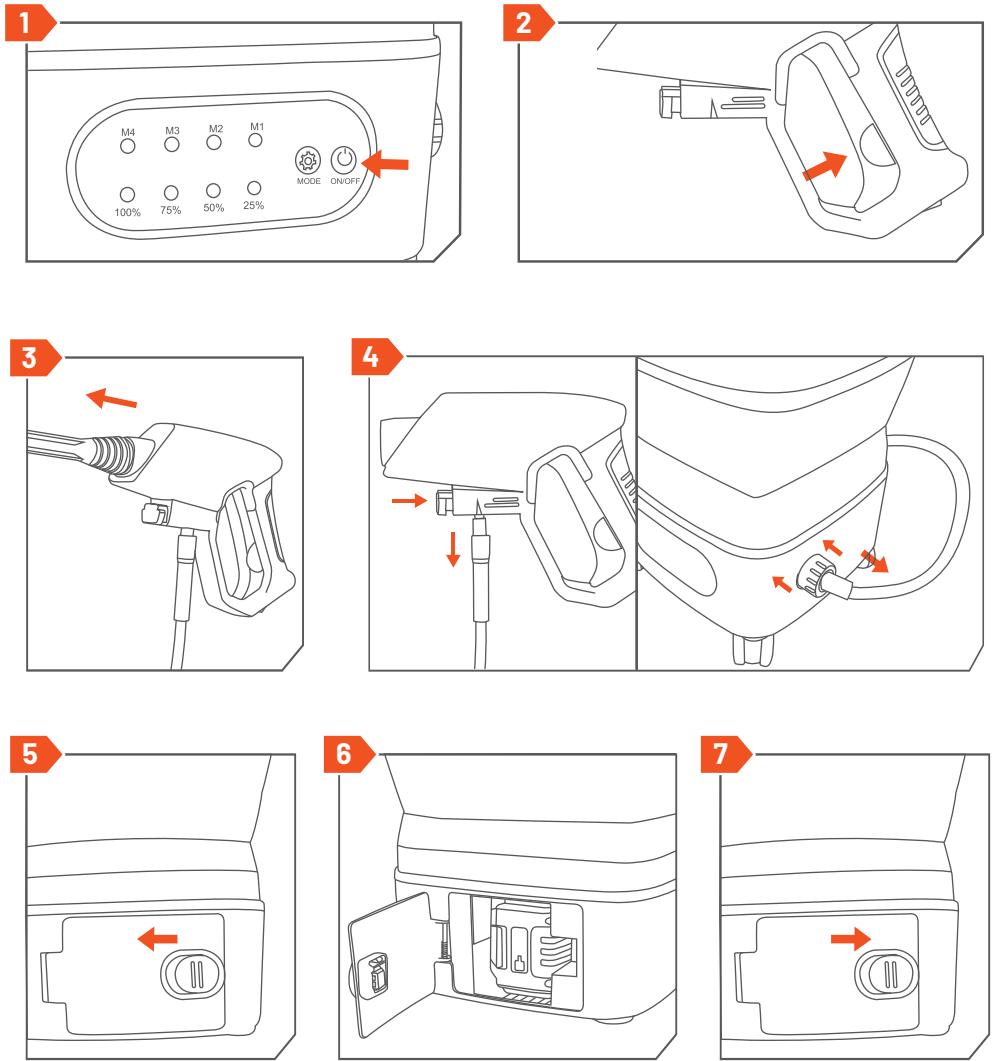




## After Use

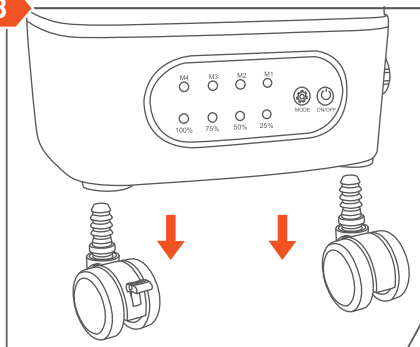
1. Press the On/Off button to turn the machine off.
2. Hold the trigger for 5 seconds to release. (Remind: If you don't push the trigger for 5 seconds, you cannot disconnect the water hose from the bucket.)
3. Disconnect the jet nozzle.
4. Disconnect the water hose from gun and the bucket.
- 5-7. Open the battery pack cover, press the battery pack release button to take out the battery pack.
8. Disassemble 4 wheels from the bottom of the bucket.
9. Fold the bucket to the smallest size.

**10.** Insert the charging cable to the battery pack and plug in the charger. When the red charging light is on, it indicates normal charging. When the red charging light turns green, the charging is complete. Please use the original charger.

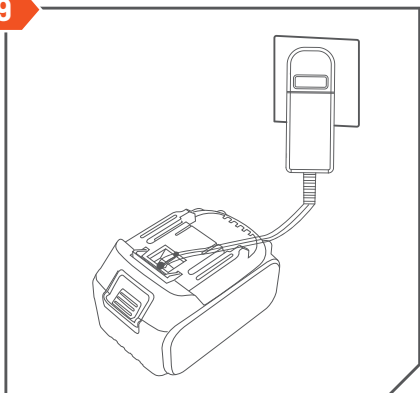




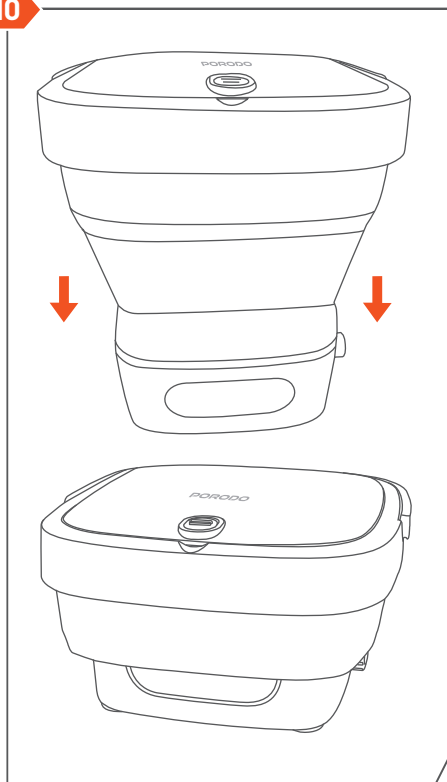
8



9



10



## Safety Precautions

1. Always use the appliance as intended. Ensure you are aware of local conditions and remain attentive to other people in the area while operating the appliance.
2. Regularly check key components, such as the high-pressure hose, hand spray gun, and safety installations, for damage before every operation. Replace damaged components immediately. Do not operate the appliance if any components are damaged.
3. High-pressure jets can be hazardous if misused. Never direct the jet at people, animals, live electrical equipment, or the appliance itself.

- 4.** The high-pressure jet must never be directed at other people, the user, or at clothing/footwear.
- 5.** Vehicle tires and valves can be damaged by the high-pressure jet and may burst. Always keep a minimum distance of 30 cm from tires when cleaning.
- 6.** Do not immerse the device in liquids or attempt to scoop liquids with it.
- 7.** Never use the appliance when other people are around unless they are also wearing protective clothing.
- 8.** This appliance should not be operated by children or individuals who have not been properly instructed on its use.
- 9.** Children must not play with this appliance. Always supervise them to prevent accidents.
- 10.** Ensure the appliance is stable before use to avoid accidents or damage.
- 11.** The high-pressure water jet causes a repulsion force. Ensure a firm footing and that you are holding the hand spray gun securely to avoid loss of control.
- 12.** Never leave the appliance unattended while it is in operation.
- 13.** In case of extended breaks, always switch off the appliance at the appliance switch.
- 14.** Do not operate the appliance at temperatures below 0°C.
- 15.** Never touch the mains plug or socket with wet hands.
- 16.** Always check the charger, mains cable, and battery pack for damage before every use. Do not use damaged devices and have damaged parts repaired only by experts. Replace damaged components immediately.
- 17.** Do not operate the charger if it is dirty or wet.
- 18.** Never operate the charger in explosive environments.
- 19.** Avoid carrying the charger by holding the mains cable.
- 20.** Protect the mains cable from sharp edges, oil, and moving parts of the machine.
- 21.** Use extension wires with multiple sockets and avoid simultaneous operation of multiple devices.
- 22.** Never pull the plug out of the socket by pulling the mains cable.
- 23.** Never cover the charger and keep the air vents of the charger open.
- 24.** Ensure no metal parts come into contact with battery holders to avoid short-circuiting.

- 25.** Only use authorized experts for repairs.
- 26.** Always use the charger with approved battery packs.
- 27.** Avoid contact with fluids: If fluid leaks from defective battery packs, rinse with water to avoid accidental contact with fluid. If fluid comes in contact with the eyes, consult a doctor immediately.
- 28.** Replace damaged battery packs promptly.
- 29.** Never store battery packs with metal objects, as they could cause a short circuit.
- 30.** Always ensure the battery pack is dry and not wet before use.
- 31.** The mains voltage must match the voltage specified on the charger.
- 32.** Never charge the battery pack in explosive environments.
- 33.** Protect the battery pack against sharp edges, oil, and moving parts.
- 34.** Never cover the battery pack during charging, and ensure the ventilation slots are clear.
- 35.** Ensure no metal parts touch the contacts of the battery pack to avoid short-circuiting.
- 36.** Never open the battery pack yourself. Get repairs done by authorized experts.
- 37.** Dispose of battery packs properly, never throwing them into fire or household waste.
- 38.** The appliance must not be operated in an explosive atmosphere.
- 39.** Do not use the appliance to clean objects containing hazardous materials.
- 40.** Do not spray flammable liquids.
- 41.** Do not use with fluids containing solvents, including petrol, paint thinner, and heating oil.

## **Proper Use**

This high pressure cleaner is designed for cleaning machines, vehicles, buildings, tools, facades, terraces, gardening tools by high pressure water spray.

## Safety Lock

The safety lock prevents unintentional operating of the device.

## Transport

1. Mind the weight of the appliance during transport.
2. When transporting by hand, lift it by carrying the handle.
3. When transporting in vehicles, secure the appliance against shifting and tipping over.

## Disposal

This product must not be disposed of as unsorted household waste. It is important to separate such waste for proper treatment and recycling, in compliance with local waste management regulations.



## **Warranty**

Products that you buy directly from our **Porodo** website or shop come with a 24-month warranty.

When you buy **Porodo** products from any of our approved sellers, you only get a 12-month warranty. If you want to extend this warranty, go to our website at **<https://www.porodo.net/warranty>** and fill out the form with your information. Don't forget to upload a picture of the product too. After we've checked and accepted your request, we'll send you an email to confirm that your product's warranty has been extended.

For more info, please check:  
**<https://www.porodo.net/warranty>**

## **Contact Us**

If you have any questions about this Privacy Policy, please contact us at:  
**[info@porodo.net](mailto:info@porodo.net)**

Website: **<https://www.porodo.net/>**

Service Support: **[support@porodo.net](mailto:support@porodo.net)**

Instagram: **porodo**