

**PORODO**  
**GAMING**



**Porodo Gaming**  
**TRUE-WIRELESS**  
**GAMING EARBUDS**

SKU: PDX415-BK



# Table of Contents

Product Overview	2
Specifications	2
Package Contents	3
Charging Instructions	3
Bluetooth Pairing	4
Touch Control	5
Frequently Asked Questions	6
Safety Precautions	6
Disposal	7
Warranty	7
Contact Us	7

## Product Overview

The Porodo Gaming True-Wireless Gaming Earbuds are designed for an enhanced gaming and music experience. With Bluetooth 5.0 connectivity, they provide seamless audio synchronization, ensuring a low-latency range of 40-65ms for uninterrupted gameplay. Featuring dual microphones, these earbuds deliver crisp and clear sound quality for in-game communication. Whether you're in Game Mode for a competitive edge or Music Mode for a more immersive experience, these earbuds adapt to your needs. The compact case allows for 6 hours of continuous playtime, and touch controls provide easy operation. Perfect for gamers who demand high performance, comfort, and reliability.

## Specifications

Chipset	ATS3015
Operating Distance	10-15m
Impedance	32Ω
Driver	ø13mm
Earbuds Battery	30mAh
Charging Case Battery	300mAh

Recharge Time	1 Hour
Waterproof Rating	IPX5
Weight	42g

## Package Contents

Earphones



Charging Case



Charging Cable

## Charging Instructions

### 1. Earphones Charging

Place the earphones into the charging case and let them charge. The ice blue light of charging case lights on when charging, and turns off after full charge.

## 2. Charging the Case

The red light flashes when the case is charging. When the case is fully charged, ice blue light will appear.



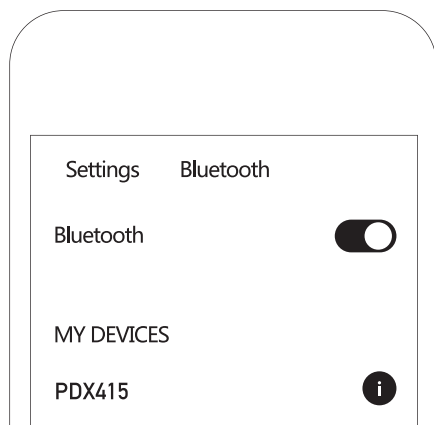
## Bluetooth Pairing

**a.** The earphones automatically power on when taken out of the case. To power off, simply place them back in the case.



**b.** Remove both earphones from the case and wear them directly in your ears. The earphones are successfully powered on when you hear a "di" sound (no indicator light will flash on the earphones).

**c.** Pairing: Turn on the Bluetooth on your device (mobile phone, tablet, PC, etc.) and search for available devices. Select the "PDX415" from the list to pair.



## Touch Control



- 1. Answer Calls:** When receiving a call, tap either earphone to answer.
- 2. Reject Calls:** During an incoming call, press and hold for about two seconds to reject.
- 3. Hang Up Calls:** During a call, tap either earphone to end it.
- 4. Pause/Play:** Tap either the left or right earphone to pause or play audio.
- 5. Next Song:** Double-tap the right earphone to skip to the next song.
- 6. Previous Song:** Double-tap the left earphone to go to the previous song.
- 7. Game Mode:** When Bluetooth is connected, press and hold either earphone for 1-2 seconds until you hear a "beep" sound, enabling ultra-low latency for gaming.

## Frequently Asked Questions

### **1. No Sound in the Earphones**

- a.** Ensure that the earphones are in working condition.
- b.** Check if the phone volume is set properly.
- c.** Confirm that the earphones are properly connected to the phone.
- d.** Make sure the earphones are within the normal coverage area.

### **2. Poor Call Quality**

- a.** Ensure the phone is in a strong signal area.
- b.** Make sure there are no obstacles between the earphones and the phone.

## Safety Precautions

- 1.** Avoid using the earphones in wet or humid environments to prevent damage.
- 2.** Do not drop or expose the earphones to extreme physical impacts. Handle with care to avoid damage.
- 3.** Always store the earphones in their case when not in use to protect them from dust and debris.
- 4.** Use only the recommended charging cable and adapter. Do not overcharge the earphones to prevent battery damage.
- 5.** Avoid listening at high volumes for extended periods to prevent hearing damage.
- 6.** Do not expose the earphones to extreme temperatures, as it may affect performance and battery life.
- 7.** Clean the earphones with a soft, dry cloth. Do not use harsh chemicals or abrasive materials.
- 8.** Continuous use of earphones during vigorous exercise may cause discomfort. Take breaks as needed.
- 9.** Keep the earphones out of reach of small children to avoid the risk of swallowing small parts.

**10.** If the earphones are damaged, do not attempt to repair them yourself. Contact authorized service centers for assistance.

## **Disposal**

This product must not be disposed of as unsorted household waste. It is important to separate such waste for proper treatment and recycling, in compliance with local waste management regulations.

## **Warranty**

Products that you buy directly from our **Porodo** website or shop come with a 24-month warranty.

When you buy **Porodo** products from any of our approved sellers, you only get a 12-month warranty. If you want to extend this warranty, go to our website at **<https://www.porodo.net/warranty>** and fill out the form with your information. Don't forget to upload a picture of the product too. After we've checked and accepted your request, we'll send you an email to confirm that your product's warranty has been extended.

For more info, please check:  
**<https://www.porodo.net/warranty>**

## **Contact Us**

If you have any questions about this Privacy Policy, please contact us at:

**[info@porodo.net](mailto:info@porodo.net)**

Website: **<https://www.porodo.net/>**

Service Support: **[support@porodo.net](mailto:support@porodo.net)**

Instagram: **porodo**