



**Green Lion**

**Your On The Go | Hygiene  
Essential**

SKU: GNBIDPWTNKBK

Model No: GPB-12

## Table of Contents

Safety Instructions	2
Warning	2
Product Overview	3
Operation Function	3
Recharging	4
Battery	5
Specifications	6
Attention	7
Disposal	8
Warranty	8
Contact Us	8

## Safety Instructions

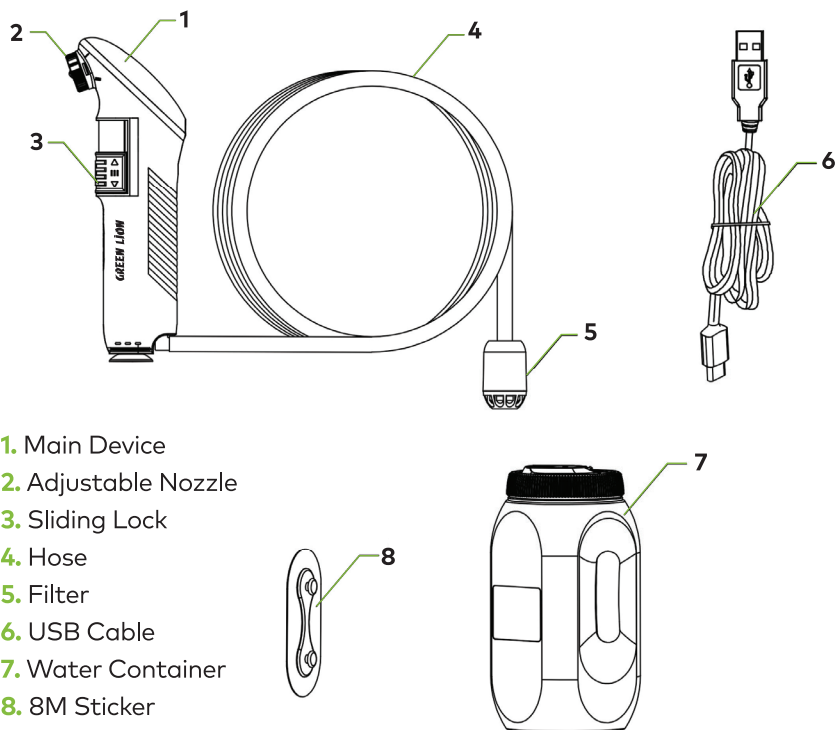
1. Please Read All Instructions Before Using The Appliance.
2. Know How To Stop The Product And Charge The Battery.
3. Follow The Maintenance Instructions Specified In The Manual.
4. Operate Only With Water Within The Temperature Range 10°C To 50°C.
5. Bidet Assembly Includes Small Parts That Could Be A Choking Hazard.

## Warning

### **To reduce the of risk injury:**

1. Do Not Leave Appliance Unattended When In Use. Switch The Power Off When Not In Use.
2. Use Only As Described In This Manual With Manufacturer's Recommended Attachments And Replacement Parts.
3. Do Not Use The Bidet With Water From The Sea, Or Muddy/Dirty Condition Water From Pool Or River.
4. Make Sure Charger Port Is Closed Tight And Do Not Put The Device Into Water To Avoid Damage.
5. When The Device Is Operated By Children, Proper Instruction And Attention Should Be Given.
6. Recharge The Battery Using Specification Required. Output: 5V / 1-0.5A.
7. Do Not Use Damaged Power Cord Or Plug And Charge Only With Correct Voltage As Listed On The Rating Plate. Using Improper Voltage May Result In Damage To The Battery And Possible Injury To The User.
8. Before Use, Ensure That There Are No Broken Or Worn Parts And All Screws Are Fully Tightened.
9. Keep The Device Away From Heating Or Fire.
10. Keep The Device Away From Freezing. Freezing Will Damage The Motor And Cord.
11. Do Not Disassemble Your Device. This Will Void All Warranties.
12. Do Not Charge The Battery Overnight Or Overcharge.

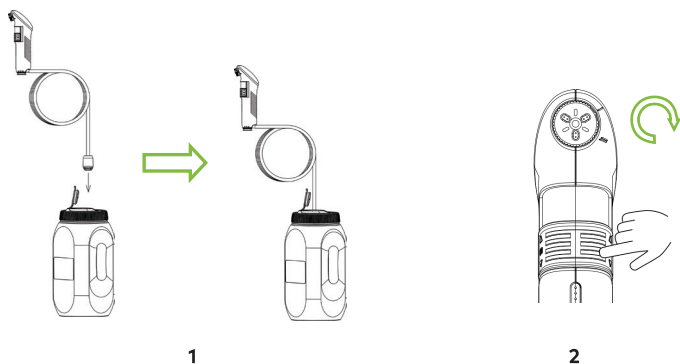
## Product Overview



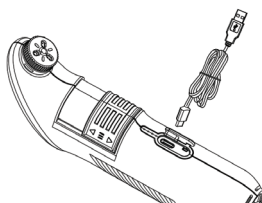
## Operation Function

1. Twist Off The Container Lid, Fill The Container With Water, And Place The Hose In The Bottom Of The Container.
2. Slide Up The Protective Cover To Start Up And Use. Press The Button Once For Gentle Flow And Twice For Strong Flow, Then Press Again To Turn It Off. The Nozzle Can Also Adjust The Water Flow. After Use, Slide Down The Protective Cover For Storage.

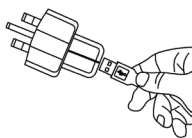




## Recharging



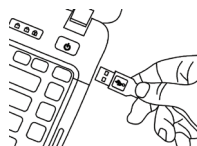
Open The Socket Cover, Plug The USB Cable To Charge It When It's In Low Power. Connect The USB Charging Cable To:



A 5V Phone USB Charger

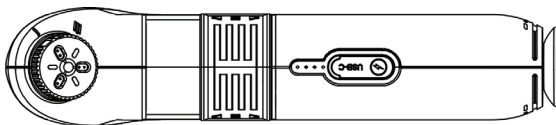


A Car USB Socket



A Computer USB Socket

**Warning:** Do Not Use The Charger With Output Higher Than 5V To Charge The Device. It May Damage The Battery And Cause Fire & Explosion!



Notes On LED Indicator:

4 LED: 100%–75%Capacity (Please Stop Charging)

3 LED: 75%–50%Capacity

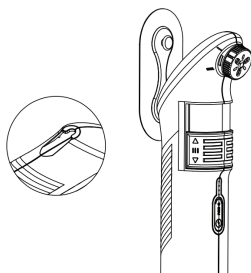
2 LED: 50%–25%Capacity

1 LED: 25%–7%Capacity

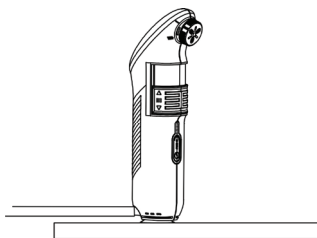
All LED Out: 7%–0%Capacity

## Battery

1. We Recommend Charging The Battery To SOC 40 %-50 %(About 30 Minutes) After Each Use To Ensure The Maximum Battery Life. Please Charge Before Using For The First Time.
2. Please Recharge The Battery At Least Every Three Months To Ensure It Remains In A SOC 40 %-50 %- The Battery Will Deplete When Stored For Long Periods.
3. Do Not Charge The Battery Beyond Output Specification The Products Require (Output: 5V / 0-1.5A).
4. Store Away From High Temperatures Or Flammable & Explosive Goods. Only Charge At Room Temperature And Avoid Charging In Hot Environments.



It Can Be Hung On The Wall Through The Hook Position Reserved On The Back Of The Product And 3M Sticker.



The Bottom Of The Product Is Equipped With Suction Cups, Which Can Be Placed Directly On The Table.

## Specifications

Model No.	GPB-12
Material	ABS + Silicone + PP
Battery	1600mAh
Power	≤5.55W
Voltage	3.7V
Motor Speed	6000 RPM
Water Tank	2.5L
Water Flow	1L–1.3L/min
Water Pipe Length	1.2 m
Spray Modes	2 Levels
Waterproof	IPX6
Charging Time	2.5–3 hours
Charging Port	Type-C
Working Time	70 min
Product Weight	520 g
Product Dimensions	140*234 mm

## Attention

1. Adjust the nozzle when it is working, there is water leaking from the edge.  
So pls do not adjust nozzle when machine is working.
2. If there is water inside the product, it can be placed horizontally or vertically, and the internal water can be discharged through the three drainage holes on the side.
3. Long time continuous work will emit heat on the main device.
4. Long time continuous work will emit heat



## Disposal

This product must not be disposed of as unsorted household waste. It is important to separate such waste for proper treatment and recycling, in compliance with local waste management regulations.

## Warranty

This **Green Lion** product comes with a 12-month warranty when purchased from our website, official store, or approved sellers.

To extend the warranty, please visit <https://www.greenlion.net/warranty> and fill out the form with your product details. Make sure to upload a clear picture of the product.

After we review and approve your request, you will receive a confirmation email stating that your product's warranty has been extended.

For more info, please check:

<https://www.greenlion.net/warranty>

## Contact Us

If you have any questions about this Privacy Policy, please contact us at:

Website: <https://www.greenlion.net/>

Sales: [sales@greenlion.net](mailto:sales@greenlion.net)

Service Support: [Support@greenlion.net](mailto:Support@greenlion.net)

Telegram: [@greenlion\\_global](https://t.me/greenlion_global)

Instagram: [@greenlion\\_global](https://www.instagram.com/greenlion_global)