



Green Lion
**Force Pro Cordless
Vacuum Cleaner**

SKU: GNFORVC15GY

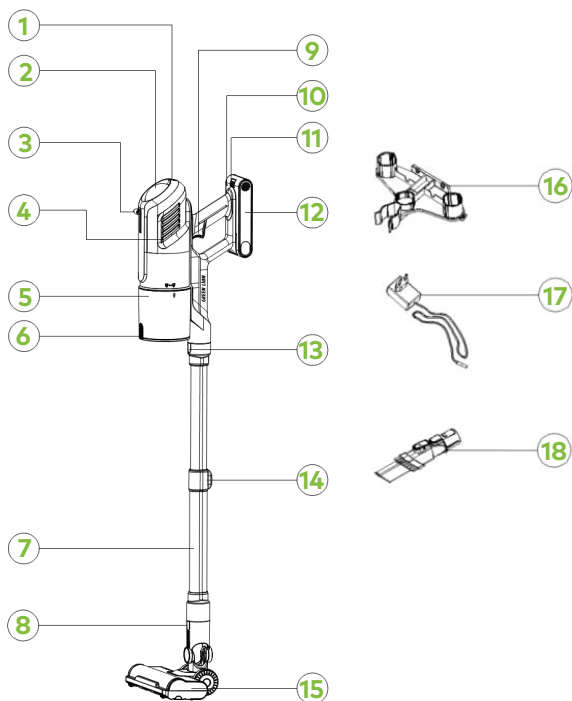
Model No: GVC15

Table of Contents

Product Component Name	2
Specifications	3
Important Notice	3
Precautions For Use	4
Assemble the Conductive Tube	4
The Electric Floor Brush	5
Assemble and Disassemble	5
Use 2 in 1 Nozzle	6
Telescopic Tube Adjustment	6
Preparation For Use	8
Charging Precautions	8
Charging Process	9
Clean The Shut Cup	9
Clean or Replace the HEPA Filter	10
Clean the Electric Floor Brush	11
Cleaning Safety Precautions	12
Storage Instructions	12
Environmental Protection	12
Warning	13
Disposal	15
Warranty	15
Contact Us	15

Please read this manual carefully before use and keep it properly for future reference.

Product Component Name



1. Shift button
2. Display scree
3. Dust-scraping push rod handle
4. Air outlet
5. Dust cup
6. Dust cup release button
7. Conductive telescopic tube
8. Floor brush release button
9. Switch button

Specifications

Material	ABS
Motor	DC Brushless
Rated Power	430W
Output Voltage	35V
Frequency	50/60 Hz
Noise Level	<75 dB
Suction Power	10/18/34 kPa
Airflow	≤0.8 m ³ /min
Charging Input	100~240V
Battery Capacity	2500mAh, Lithium-Ion
Dustbin Capacity	900 ml
Charging Port	UK Plug, 1.8 Meter Cable
Charging Time	5.5 hours
Working Time	15/25/45 minutes
Product Size	25.5*26*120 cm
Product Weight	4.2 kg

Important Notice

Before using this device, please read this user manual carefully and save it for future reference.

Charge the device before use.

Check whether the voltage on the charger corresponds to the local power supply voltage before connection.

Do not use the device if the plug, power cord, or the appliance itself is damaged.

If the power supply of this electrical appliance is damaged, replace it immediately to avoid danger.

Keep electrical appliances out of the reach of children.

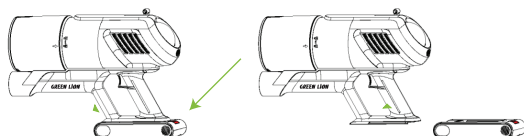
Never absorb water or any other liquid, do not inhale flammable substances, and do not inhale blades or other sharp objects.

Do not place the suction port or any other accessories on your eyes or ears. When connected to the vacuum cleaner, do not put it in your mouth. Do not use the product when the device is charging.

Preparation for Use

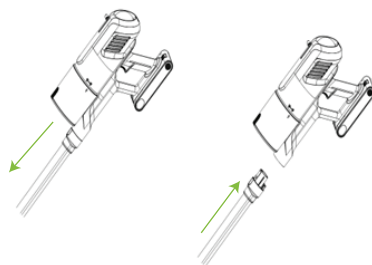
Assemble the battery pack and the entire machine

Insert one end of the battery pack into the position below the main unit handle in the direction shown in the picture. After hearing a click, the battery pack is assembled and can be turned on for use. If you want to remove the battery pack, hold the main unit handle with one hand and the battery pack with the other hand, and press the battery pack lock button simultaneously. Then, you can pull out the battery pack.



Assemble the Conductive Tube

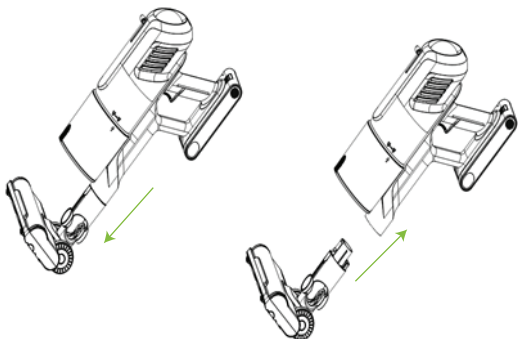
Insert the end of the conductive tube into the main unit. After hearing a click, the conductive tube is installed and locked. If you want to remove it, hold the main unit with one hand and the conductive tube with the other hand.



The Electric Floor Brush

Connect the interface of the electric floor brush to the main unit.

If you want to remove the electric floor brush, pull the interface out after hearing a click.



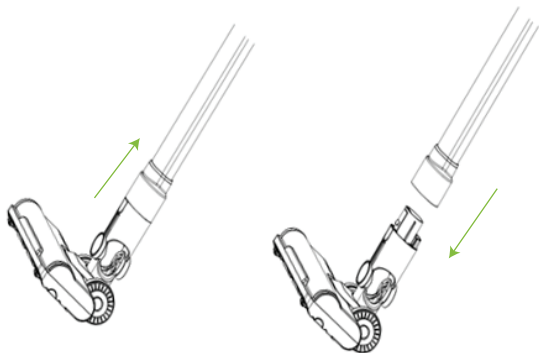
Assemble and Disassemble

Assemble:

Push the interface to install the electric floor brush. After hearing a click, the electric floor brush is assembled.

Disassemble:

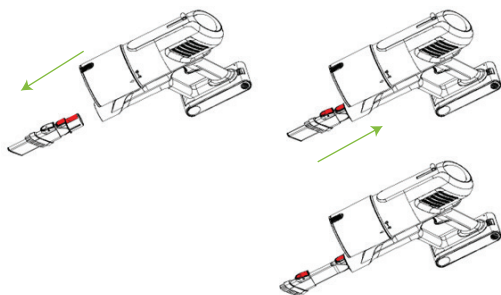
Pull the interface to remove the electric floor brush. After hearing a click, the electric floor brush is removed.



Use 2 in 1 Nozzle

The two-in-one nozzle can be used for cleaning various areas, such as corners of furniture or tight spaces.

Press the button of the electric floor brush to turn it off.



Telescopic Tube Adjustment

The Longest: For extended reach, suitable for larger spaces.

Moderate: Ideal for standard usage.

Shortest: Perfect for focused cleaning, such as cleaning small areas.

The longest



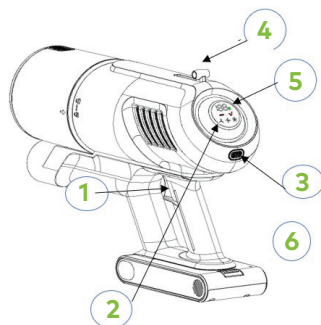
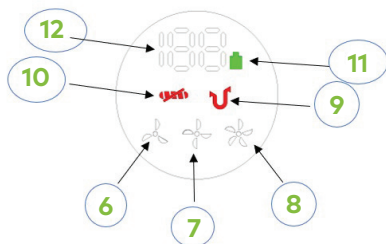
Moderate



The Shortest



The Meanings of Each Button on the Vacuum Cleaner and the Digital Symbols on the Display Screen



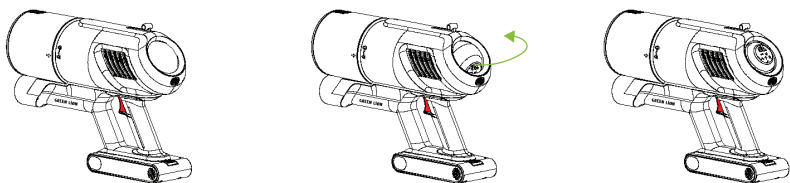
- | | |
|----------------------------------|--|
| 1. Switch Button | 7. Medium Gear |
| 2. Battery Indicator Light | 8. High Gear |
| 3. Shift Button | 9. Host Blockage Warning Light |
| 4. Dust-Scraping Push Rod Handle | 10. Floor Brush Blockage Warning Light |
| 5. Display Screen | 11. Battery Indicator |
| 6. Low Gear | 12. Battery Level |

Abnormal Phenomenon	Fault Display Code	Solution
Use the wrong charger	E1	Please use the charger provided with this product
Button jamming protection	E2	Check whether the switch button and the speed control button are stuck
Abnormal battery pack	E3	Replace the battery pack
Floor brush and roller brush clogging protection	E5+Floor brush blockage stop warning light	Clean up the hair and other debris entangled on the roller brush
Host blockage protection	E7+ Host blockage warning light	Clean the hepa, filter steel mesh, and dust cup in a timely manner
Over-discharge temperature protection	E8	Let the battery pack idle for a period of time, and it will turn on normally

Note: If other fault display codes appear, please contact after-sales service

Preparation For Use

1. Before use, ensure that the product is fully charged.
2. Choose appropriate accessories for installation based on the cleaning object.
3. Press the start switch button, and the vacuum cleaner display screen will rotate from bottom to top and start working in low gear. At this time, the battery life is the longest, but the suction force is small. After pressing the shift button, the vacuum cleaner switches to medium gear, and the suction force increases. Press the shift button again to switch to high gear, at which point the suction force reaches its maximum. You can choose different gears according to the degree of dirt, and if you need to stop working, press the switch button in any gear to turn off the product.

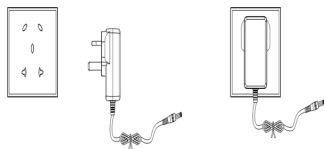


Charging Precautions

1. Ensure the power supply is safe and the local voltage is consistent with the voltage recognized by the product.
2. The charger hole is located on the side of the battery pack, as shown in the figure. Insert the charging plug into the hole of the device.
3. When the device is charging, the power indicator light shows a green flash, the 188 power level indicator light rises slowly, and the battery pack indicator light flashes green. When the 188 battery level indicator light remains green constantly, it indicates that the battery is fully charged.

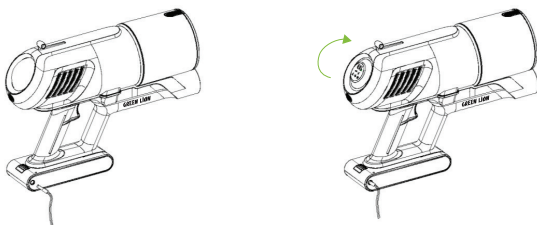
4. During use, when the 188 battery level indicator light shows below 5, the battery light flashes green, indicating that the battery is about to run out. When the battery runs out and the machine fails to work properly, and it doesn't stay on when turned on, it indicates that it needs to be recharged.

Please note that the device does not work when charging.



Charging Process

1. First, plug the charger into the charging port of the vacuum cleaner.
2. Then, insert the other end of the charger into the vacuum cleaner's battery pack. When the vacuum cleaner is in charging status, the display screen will slowly rotate from bottom to top to show the current battery level. At the same time, the battery pack indicator light will keep flashing to indicate that it is charging. After the battery pack is fully charged for 10 minutes, the display screen will slowly rotate back from top to bottom and hide.

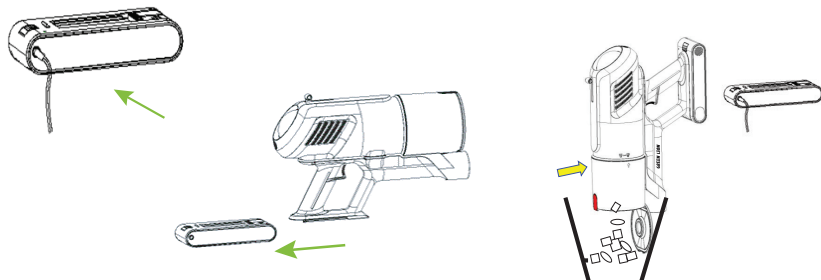


3. You can also remove the battery pack and charge it separately.

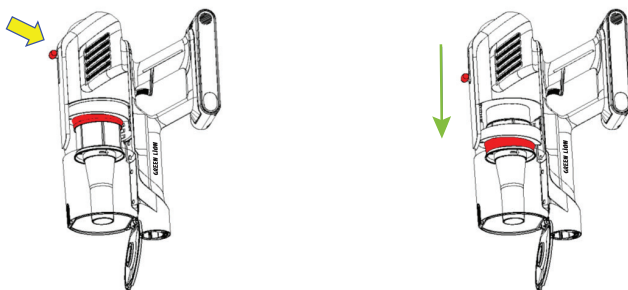
Clean The Shut Cup

1. When the dust cup is at its maximum suction, it should be cleaned in time to ensure the best cleaning performance.

2. With the dust cup shown in the picture below, press the dust cup release button to remove the vacuum cleaner's dust cup.



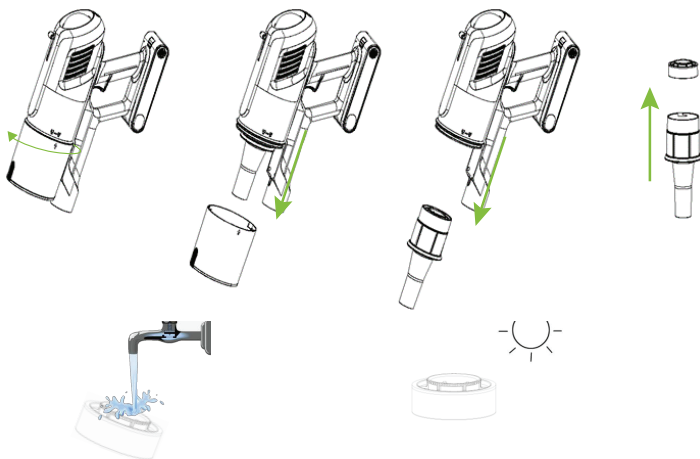
3. After pouring the garbage in the dust cup into the trash can, if there is still some garbage or hair left on the cyclone, you can push the dust-scraping push rod handle at the top of the vacuum cleaner. Push the handle all the way down and the remaining garbage will scrape off, as shown in the following picture.
(Do not use this function when starting up.)



Clean or Replace the HEPA Filter

The HEPA filter will get clogged after being used for a period of time, which will lead to a decrease in the suction power of the vacuum cleaner and a decline in its cleaning ability. Therefore, it is very important to clean the HEPA filter in a timely manner.

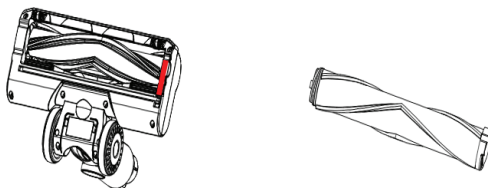
1. Rotate the dust cup counterclockwise to remove it.
2. Then rotate the cyclone counterclockwise and remove it.
3. Remove the HEPA filter from the cyclone.
4. Clean the cyclone and HEPA in a timely manner, rinse and dry them before reinstalling and using



Clean the Electric Floor Brush

Electric floor brushes may be blocked by large objects or surrounded by hair or long strings. The roller brushes need to be cleaned in time.

1. Press the roller brush release button indicated in the picture to remove the roller brush from the floor brush.
2. Remove large objects. Use a blade or scissors to cut and clean the hair and long strings. Then reinstall the roller brush on the electric floor brush. Be careful not to hurt yourself or others when using the scissors and blades.



Cleaning Safety Precautions

Before you clean any parts, be sure to turn off and unplug the electrical appliances.

Do not clean any part of the vacuum cleaner in the dishwasher. If necessary, clean the parts with a dry cloth.

Clean the utensils with a dry cloth.

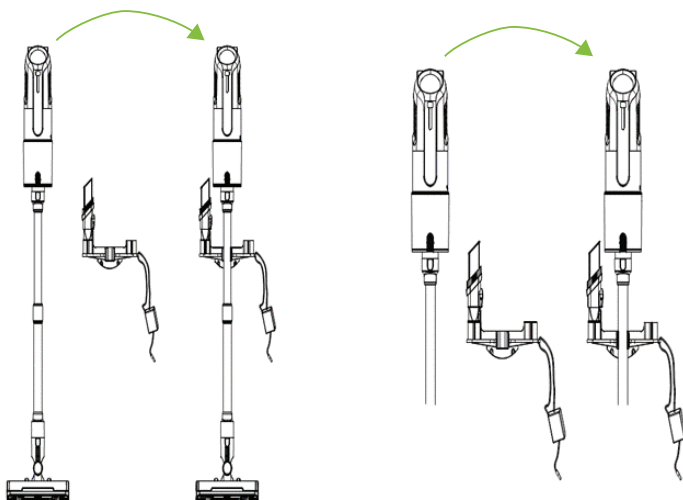
Storage Instructions

For the convenience of subsequent use, please store the equipment and accessories properly.

1. You can store your equipment and accessories horizontally on the floor or table.
2. Wall-mounted type. There is a hanging slot at the rear of the main unit, which can be used in conjunction with the hanging rack in the accessories. The hanging rack needs to be fixed to the wall or cabinet with screws. It is recommended to install the hanging rack at a height where the floor brush can touch the ground. It is also recommended to install it closer to the power socket for charging.
3. Place the product on the rack as shown in the diagram, and gently pull the product forward to confirm that it is safely hung on the rack.
4. You can insert the charger wire into the storage slot on the right side of the hanger for convenient charging. The two-in-one nozzle and other brush heads can be fixed on the protruding column of the hanger

Environmental Protection

When the product's lifespan comes to an end, do not throw away electrical appliances and batteries along with ordinary household garbage. Instead, hand them over to an official recycling collection point. Doing so can better protect the environment.



Warning

Note: All contents of this project are related to security. Please ensure that users abide by them. In order to use this product correctly, preventive measures have been taken in this project. Pay attention to the risks, their magnitude, and possible accidents.

- Without the manufacturer's permission, no other components may be used. If the machine malfunctions as a result, the warranty will be automatically terminated.
- After opening the package, please check if the product is damaged and if all the parts are complete.
- If the power cord is damaged, to avoid danger, it must be replaced by the manufacturer, the maintenance department or a similar department.
- Children and persons without capacity for civil conduct should use this product under the supervision of their guardians.
- If a malfunction occurs, unplug the power supply immediately.

- Please do not place the vacuum cleaner too close to heat sources or other heat-generating objects to prevent deformation of plastic components and affect usage.

- When using a vacuum cleaner, please pay attention to each filter element installed. Do not use the vacuum cleaner without a filter element.

- Be sure to check the plug and power cord. They must be in good condition to avoid the risk of electric shock.

- Ensure the power supply is safe and the local voltage is consistent with the voltage identified by the product.

We suggest that you cut off the power supply before handling the product. It is also recommended that you take the same action for any possible dangers, especially for children at risk.

- This product is for household use only. Do not use this product outdoors.

- Please do not use a vacuum cleaner to burn cigarette butts to avoid danger. Please do not inhale detergent, kerosene, gasoline, paint, sewage or other liquids to prevent them from entering the motor and causing motor failure.

- When using a vacuum cleaner, please do not suck in lint or large paper balls, as they can easily get clogged by the suction port, suction pipe, hose, etc. Otherwise, it may cause motor failure or deformation of the house. If inhalation causes blockage, please stop immediately and remove the plug for cleaning.

- When cleaning the vacuum cleaner, please use a damp cloth or neutral detergent. Do not use gasoline, banana oil, etc., otherwise it may cause the shell to crack or fade.

- Please do not use the vacuum cleaner to suck up fine particles such as cement, gypsum powder and starch, otherwise it may cause faults such as clogging of the vacuum cleaner filter and burning out the motor. If fine particles are sucked in, please clean the filter in time.

- When the factory is in production, only the battery needs to be charged and tested. So, it needs to be used after the goods are fully loaded upon receipt.

- Please ensure that the first three charges are fully charged to complete the battery activation protection.

Disposal

This product must not be disposed of as unsorted household waste. It is important to separate such waste for proper treatment and recycling, in compliance with local waste management regulations.

Warranty

Products that you buy directly from our **Green Lion** website or shop come with a 24-month warranty.

When you buy **Green Lion** products from any of our approved sellers, you only get a 12-month warranty. If you want to extend this warranty, go to our website at <https://www.greenlion.net/warranty> and fill out the form with your information. Don't forget to upload a picture of the product too. After we've checked and accepted your request, we'll send you an email to confirm that your product's warranty has been extended.

For more info, please check:
<https://www.greenlion.net/warranty>

Contact Us

If you have any questions about this Privacy Policy, please contact us at:

Website: <https://www.greenlion.net/>

Sales: sales@greenlion.net

Service Support: Support@greenlion.net

Telegram: [@greenlion_global](https://t.me/greenlion_global)

Instagram: [@greenlion_global](https://www.instagram.com/greenlion_global)