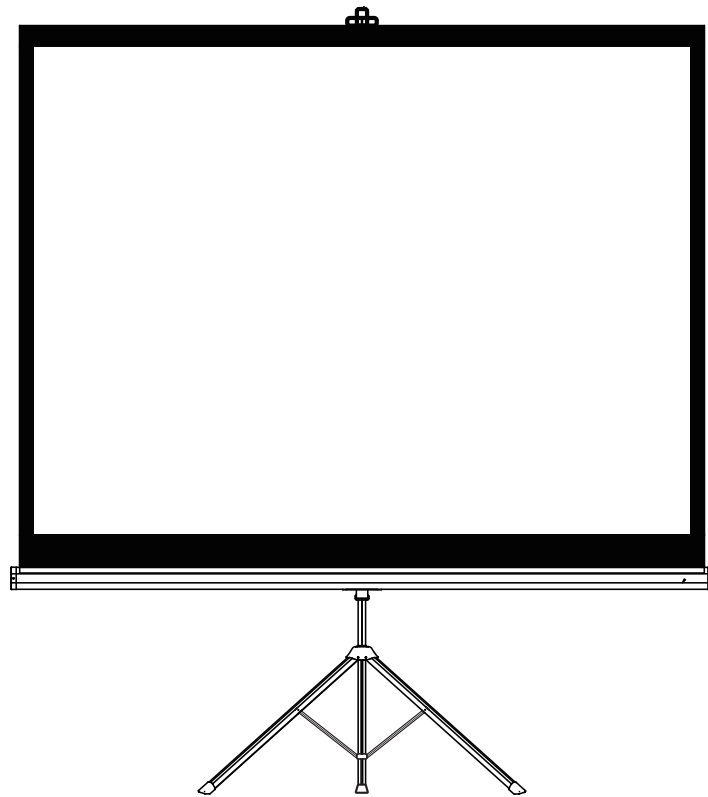


**PORODO**  
LIFESTYLE



**Porodo Lifestyle**  
**100" Portable**  
**Projection Screen**

SKU: PDTET100WH

# Table of Contents

Preface	2
Product Overview	2
Circuit Diagrams	3
Adjusting the Limit Switch	4
Instructions for Use	4
Wall-Mounted Manual Screen	5
Warnings	6
Tripod Screen	6
Specifications	8
Disposal	8
Warranty	9
Contact Us	9

## Preface

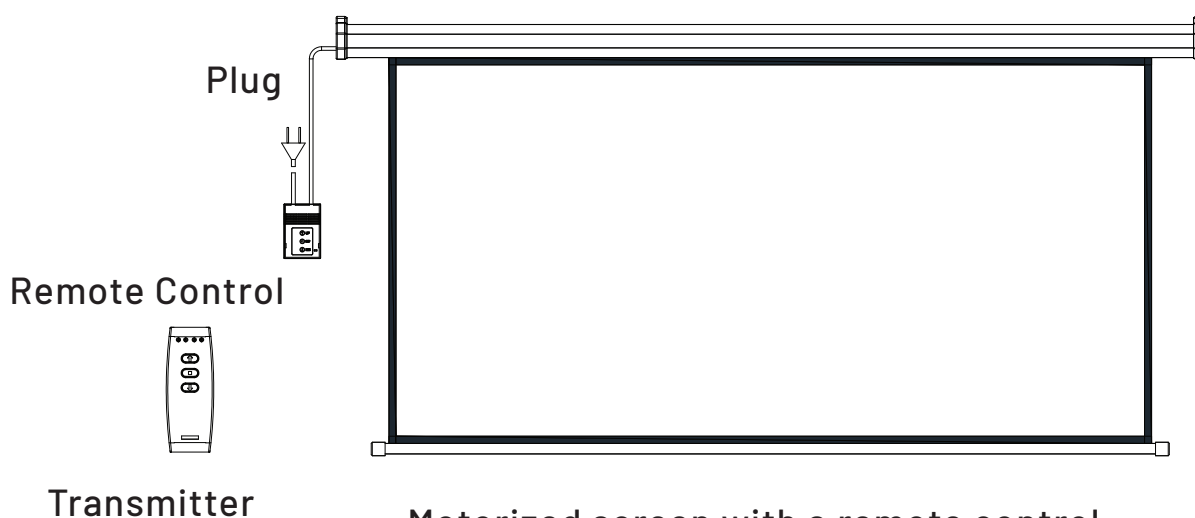
Thank you for choosing our screens. All screens have undergone rigorous quality inspections before delivery. Please read this manual carefully to ensure proper usage.

**Important Notice:** The installation of the screen, including electrical connections and the setting of the limit switches, should only be performed by skilled engineers.

## Product Overview



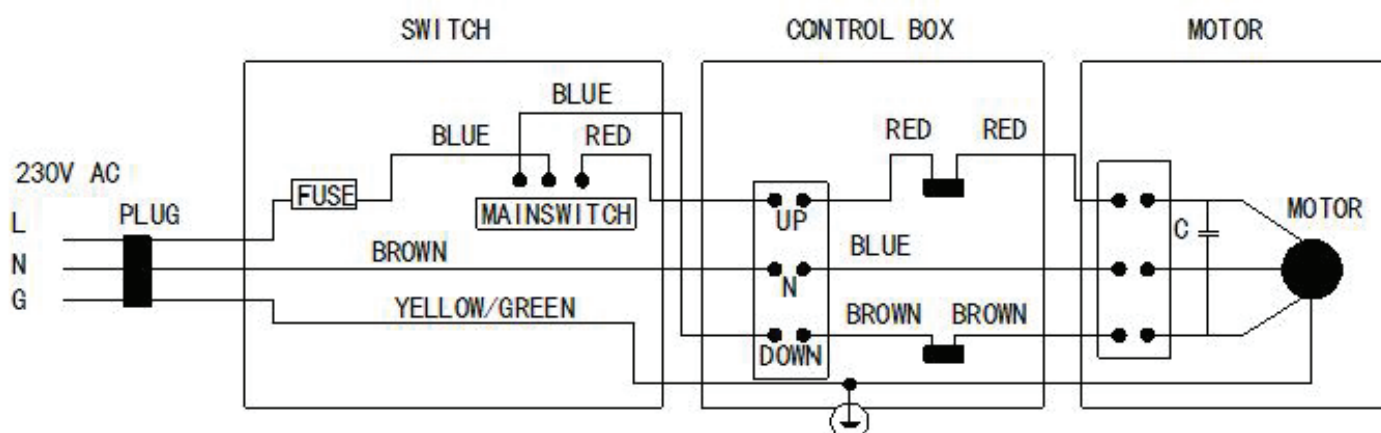
Motorized screen with a manual switch.



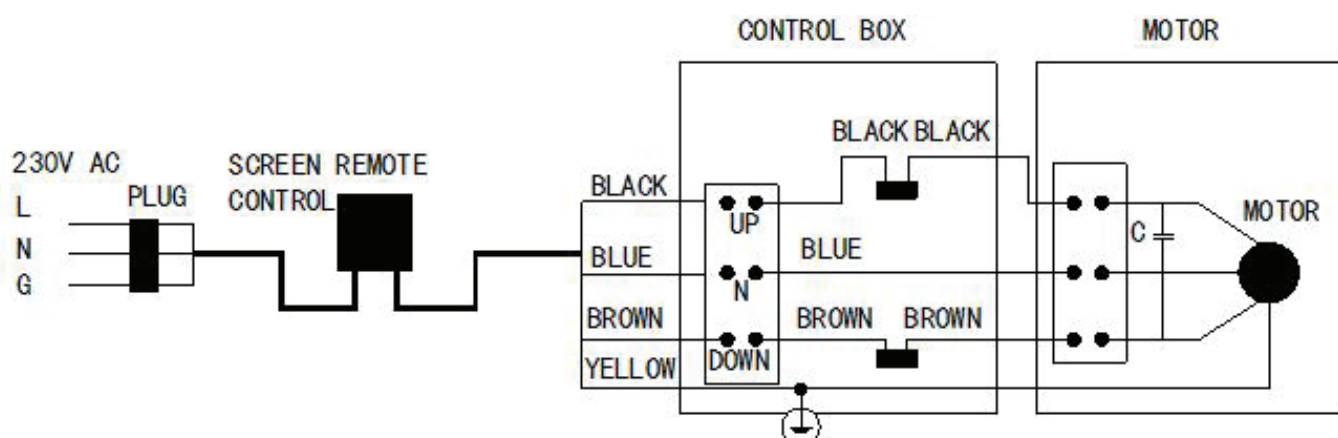
Motorized screen with a remote control.

## Circuit Diagrams

If the motorized screen is controlled via a manual switch, please refer to the diagram below for the proper electrical connection.



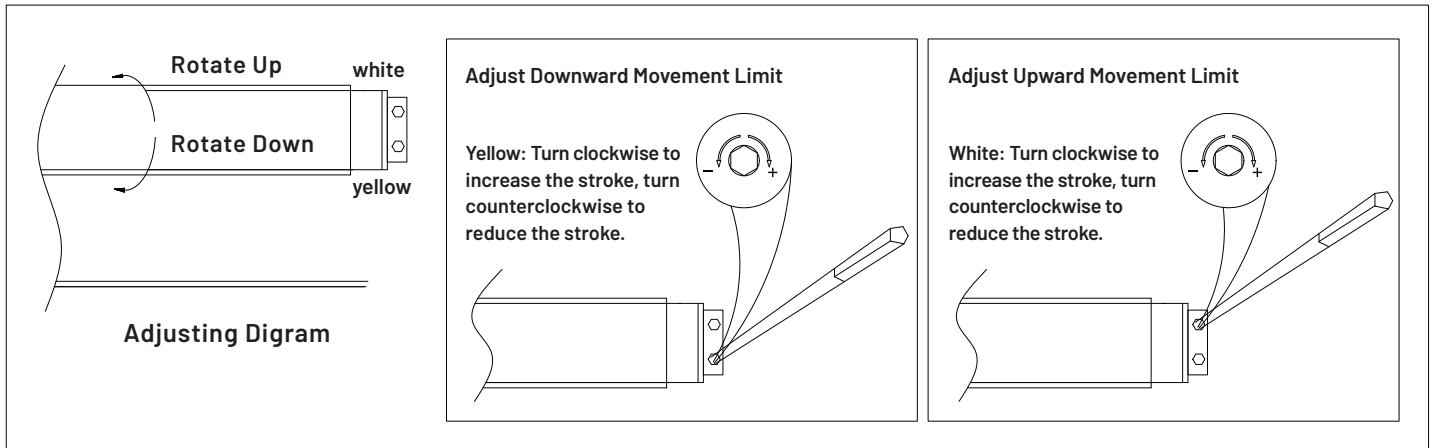
If the motorized screen operates with a remote control, please refer to the diagram below for the correct electrical connection.



If the remote control is not functioning properly, please check the battery and replace it if necessary.

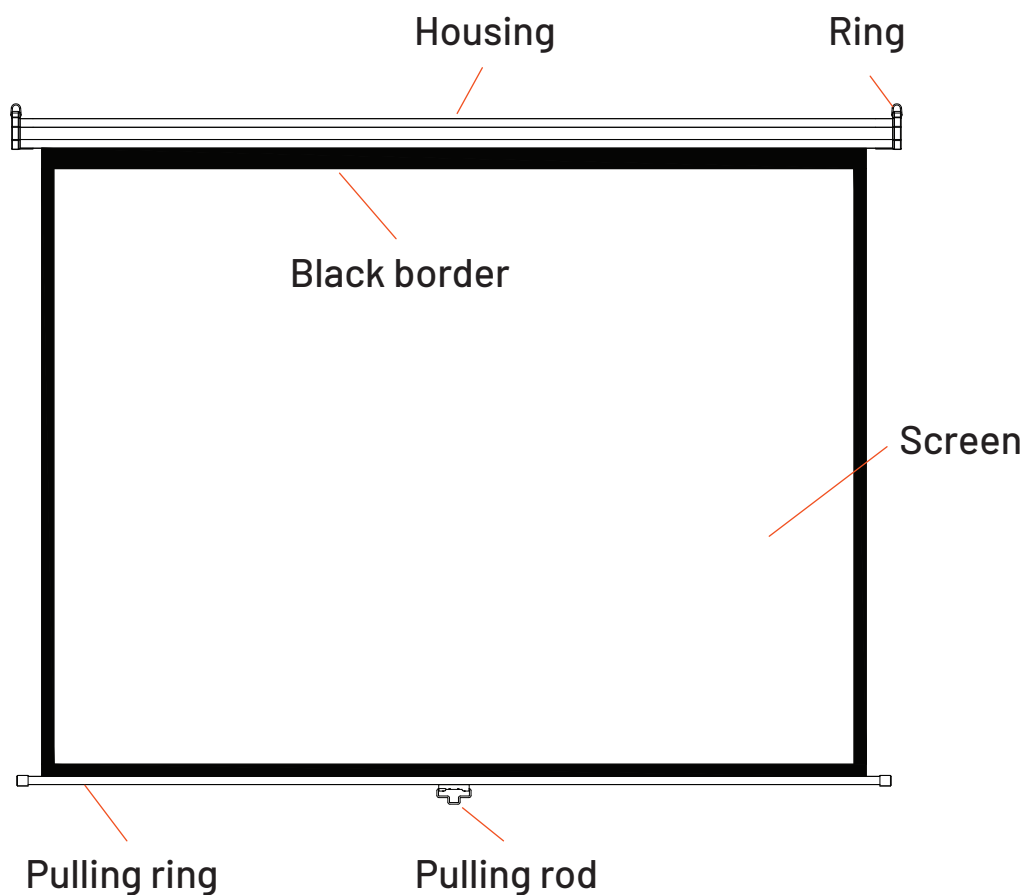
## Adjusting the Limit Switch

Adjust the position for the two limit journeys as shown in the diagram below:



## Instructions for Use

- a.** The screen must be connected to an appropriate power supply. It can be 220V/50Hz, 230V/50Hz, 110V/60Hz, or 120V/60Hz, but the motor's power must match the local voltage and frequency.
- b.** The screen can be used with or without a remote controller. The remote control system can be either radio frequency or infrared type. A radio remote controller is generally provided, though an infrared type controller is also available for special requirements. These two control systems cannot be used simultaneously in a single setup.
- c.** Typically, a synchronized motor is installed within the housing, but a tubular motor is available for special requirements.
- d.** If the remote control system is not included, the screen can be operated directly via the control box. Simply press the UP or DOWN/STOP button to control the screen. Alternatively, the screen can be operated using the remote controller.



## Wall-Mounted Manual Screen

### 1. Installation

Install the moving parts of the drive at least 25 mm above the floor. Choose an appropriate location for installation. It is recommended to install two screws on the wall, with the distance between the screws equal to that of the two rings. Both screws should be installed at the same level. The rings must be robust enough to support a load of more than 25 kg.

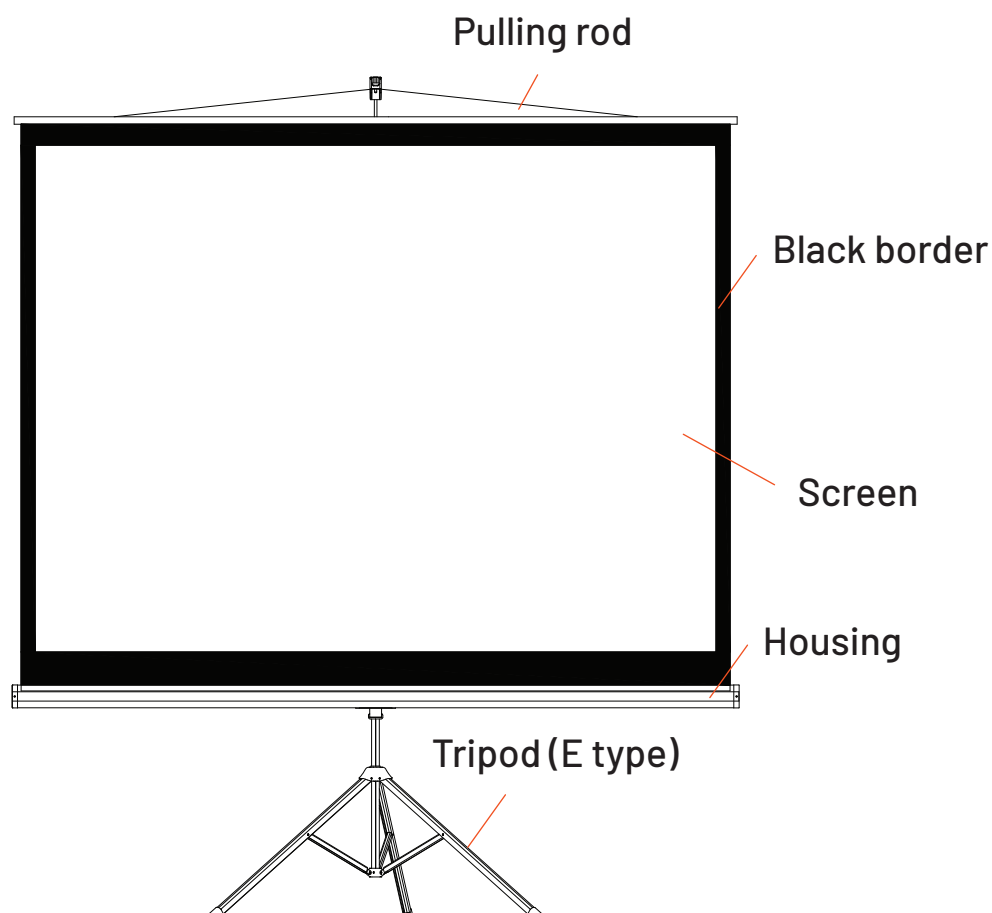
### 2. Useful Instructions

Hold the pulling ring firmly and pull the screen down slowly. Stop when the top black border appears (or when you wish to stop). The screen will automatically lock into place. If the screen does not lock, operate it again following the same procedure. After use, pull the screen down slightly to release the lock, and it will retract back into the housing.

## Warnings

- a.** The screen should not be folded. Avoid using fingers or hard objects to touch the screen surface. Do not spill milk, fruit juice, or other chemicals on the screen. Keep the screen away from high-temperature objects and open flames.
- b.** If the screen becomes dirty, clean it gently with a soft cloth or cotton ball. Avoid using organic solvents to clean the screen.
- c.** When pulling the screen down, do so slowly and vertically. Do not pull abruptly. Stop pulling as soon as the black border is fully visible or if the screen becomes jammed. If the screen remains jammed, contact the service center for assistance.
- d.** After use, retract the screen into its housing to prevent dirt accumulation. If the screen will not be used for an extended period, remove it from the wall and store it in a carton.

## Tripod Screen



## 1. Installation

Choose a suitable location for the screen. Open the tripod legs first, then extend the upper bar to the desired height and lock it in place. Hang the pulling rod above the goose neck to adjust the screen height. Finally, fix and lock the screen at the desired position. After use, release the screen and return it to the housing.

## 2. Useful Instructions

**2.1** Ensure that the tripod legs are placed steadily.

**2.2** When adjusting the screen height, move the upper bar slowly and carefully.

## 3. Warnings

**a.** The screen should not be folded. Avoid using fingers or hard objects to touch the screen surface. Do not spill milk, fruit juice, or other chemicals on the screen. Keep the screen away from high-temperature objects and fire.

**b.** If the screen becomes dirty, clean it gently with a soft cloth or cotton ball. Avoid using organic solvents to clean the screen surface.

**c.** When pulling the screen down, do so slowly and vertically. Do not pull abruptly. Stop pulling as soon as the black border is fully extended or if the screen becomes jammed. If the screen remains jammed, contact the service center for assistance.

**d.** After use, retract the screen back into its housing to prevent dirt accumulation. If the screen will not be used for an extended period, remove it from the tripod and store it in a carton.



## Specifications

Screen Size	100"
Projection Surface Size	197 x 147cm
Aspect Ratio	4:3
Viewing Angle	160°
Screen Type	Tripod Projector Screen
Screen Material	PVC Matte White Fabric
Model Number	PDTET100

## Disposal

This product must not be disposed of as unsorted household waste. It is important to separate such waste for proper treatment and recycling, in compliance with local waste management regulations.

## **Warranty**

Products that you buy directly from our **Porodo** website or shop come with a 24-month warranty.

When you buy **Porodo** products from any of our approved sellers, you only get a 12-month warranty. If you want to extend this warranty, go to our website at **porodo.net/warranty** and fill out the form with your information. Don't forget to upload a picture of the product too. After we've checked and accepted your request, we'll send you an email to confirm that your product's warranty has been extended.

For more info, please check:  
**porodo.net/warranty**

## **Contact Us**

If you have any questions about this Privacy Policy, please contact us at:  
**info@porodo.net**

Website: **porodo.net**

Service Support: **support@porodo.net**

Instagram: **porodo**