

PORODO
LIFESTYLE



Porodo Lifestyle
HANDHELD TURBO FAN

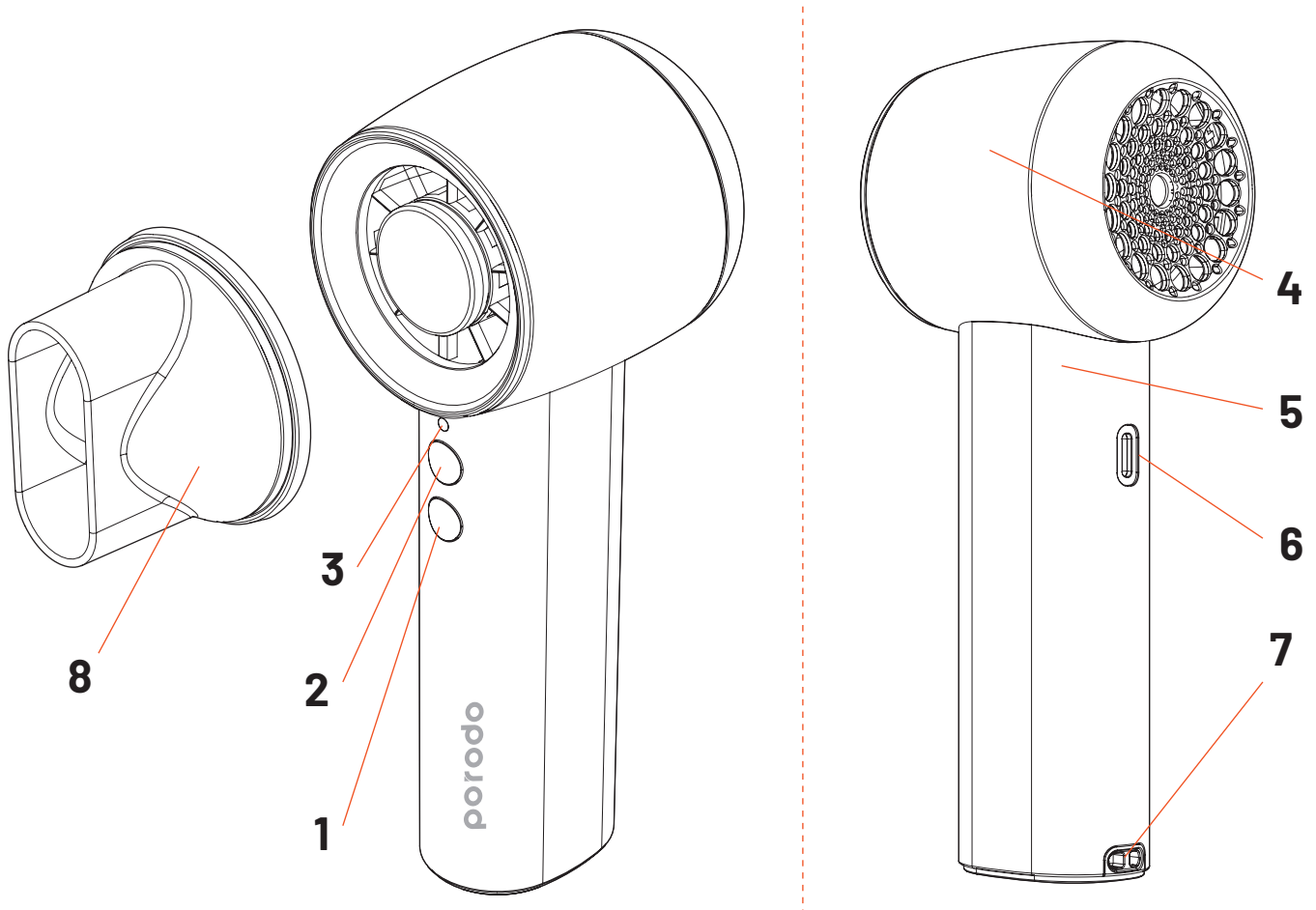
SKU: PD-LSPHMCF

Table of Contents

Schematic View	2
Package Contents	3
Overview	3
Product Features	4
Before Use	4
Instructions for Use	5
Safety Precautions	5
Specifications	7
Disposal	7
Warranty	8
Contact Us	8

Thank you for purchasing this product. Before use, please read this manual carefully to ensure proper and safe operation.

Schematic View



- 1.** ON/OFF/Level Adjustment Function Button
- 2.** Maximum Wind Button
- 3.** LED Indicator
- 4.** Turbine Fan Body
- 5.** Handle Body
- 6.** USB Type-C Recharge Port
- 7.** Hand Strap Mounting Hole
- 8.** Hair Drying Blow Nozzle

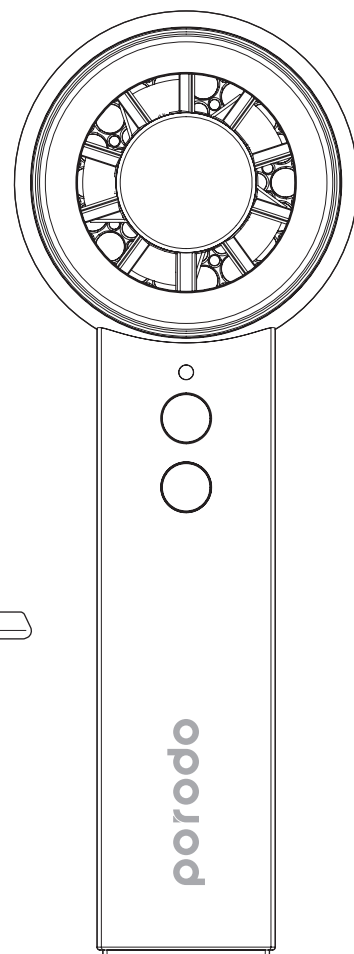
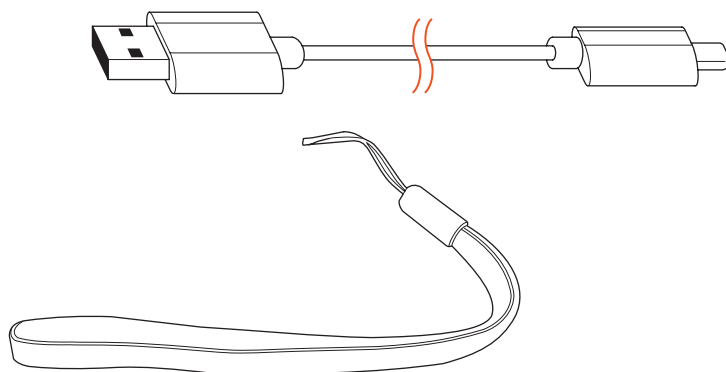
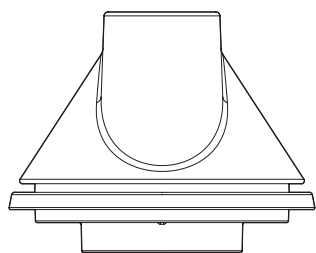
Package Contents

High-Speed Fan x1

Hair Drying Blow Nozzle x1

USB Type-C Recharge Cable x1

Hand Strap x1

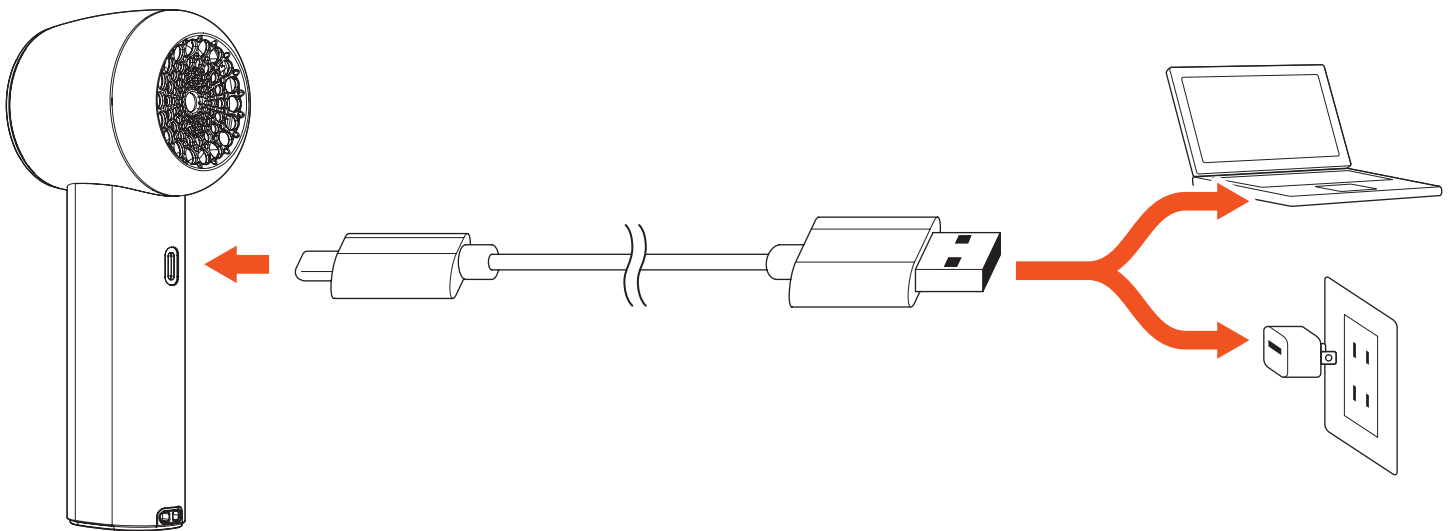


Overview

designed to serve as both an outdoor personal portable fan, featuring a detachable wind concentrator nozzle. Powered by a 20,000 RPM high-speed motor and an optimized aerodynamic turbine within a precisely engineered wind tunnel module, this fan generates a maximum wind speed of over 13 m/s. With a Type-C rechargeable port, this fan offers excellent portability and convenience, making it ideal for outdoor use or travel.

Product Features

1. High-speed fan, delivering a maximum wind speed of up to 13 m/s
2. Rapid cooling and drying performance
3. Compact and portable design, perfect for outdoor activities such as camping and hiking
4. Includes a hand strap lanyard for convenient carrying
5. Versatile 2-in-1 functionality, ideal for both cooling and hair drying (accessory nozzle provided)
6. Equipped with a 20,000 RPM high-speed brushless motor for low-friction operation
7. Extended runtime of up to 13 hours on a full charge
8. Adjustable wind speeds with 1+3 levels: mild, moderate, strong, and maximum (activated by a dedicated button for maximum wind speed)






Before Use

1. Inspect the product and charging cable to ensure they are in good condition and free from damage.

2. Before charging, verify that the USB-A power supply source voltage is compatible with the product's rating.
3. To charge the fan, connect the charging cable to the Type-C port on the fan, and the other end to the USB-A power source.
4. The LED indicator will light up white during charging. Once charging is complete, the LED will turn off. (Charging time is approximately 3 hours from low to full.)
5. Unplug the charging cable, and the fan is now ready for use.

Instructions for Use

1. Long press the function button () for 1.5 seconds to power ON. The LED will light green, with the default setting at level 1 (mild wind).
 2. Press the function button again to change to level 2 (mid wind), then to level 3 (strong wind), and so on, cycling back to levels 1, 2, 3...
 3. At any wind level, press the max wind button (), and the LED will light red, activating the Max wind (level 4).
 4. Press the function button () again, and the LED will light green, returning to level 1 for a mild breeze.
 5. When the battery becomes low, the LED will flash (green for level 1/2/3 wind; red for max wind) to remind the user to recharge the fan, as mentioned above.
 6. If the fan is not recharged until the battery is completely depleted, it will automatically turn off.
- Note:** This fan can be used while recharging at the same time (for level 1/2/3 wind, except Max wind)

Safety Precautions

1. To prevent injury and property damage to yourself or others, please follow the safety precautions below. Incorrect use may result in accidents.

- 2.** This product is not a toy. Keep it out of the reach of infants. Children under 14 should use it only under the supervision of an adult guardian.
- 3.** This product is not intended for users with limited physical ability, perception, mental ability, experience, or knowledge, unless supervised by someone responsible for their safety.
- 4.** Do not blow the fan directly at the human body for extended periods, especially for the elderly or children, to avoid discomfort.
- 5.** Avoid placing fingers, small objects, sharp objects, or metal items into any openings of the fan to prevent the risk of electric shock or injury.
- 6.** When powered on, avoid using wet hands or towels to contact the fan or connecting the charging cord to prevent electric shock or leakage.
- 7.** This product is not waterproof. Do not use it near water spills or in areas with heavy moisture, such as bathrooms or near the seaside. Clean the exterior with a dry cloth and keep the fan dry. If internal parts become damp, stop using the product until you have shaken and blown out the moisture, ensuring all moisture has evaporated and the fan is completely dry.
- 8.** Do not obstruct the air inlet or outlet, such as by hanging clothes or towels, to avoid damage or product failure.
- 9.** Keep the product away from high heat sources (above 60°C). Do not leave it in confined spaces such as greenhouses, construction sites, inside cars, or other high-heat environments. Exposure to such conditions may cause plastic deformation, battery failure, or even fire or explosion.
- 10.** Avoid throwing or impacting the product. Repeated shocks or impacts may cause permanent damage. Do not bend or pull the charging cord to prevent poor connection during recharging.
- 11.** This product is powered by a 5V DC Type-C USB. Only use a certified 5V DC USB charger/power supply with a current of 2A or greater. DO NOT use non-standard or fast charger adapters.
- 12.** DO NOT disassemble or modify the product, as doing so will VOID the

manufacturer's warranty for maintenance or replacement. Improper handling of the battery can lead to severe accidents, including shocks, high heat, or fire.

Specifications

Battery Capacity	4000mAh (2000mAh x2)
Rated Input	5V/2A
Recharge Time	3.5 hours
Working Time	13H (Level 1), 5H (Level 2), 3H (Level 3), 1H (Strong Wind)
Charging Port	Type-C
Product Size	60×62 × 165mm, 165 x 96 x 60mm (With Nozzle)
Product Weight	220g, 235g (With Nozzle)

Disposal

This product must not be disposed of as unsorted household waste. It is important to separate such waste for proper treatment and recycling, in compliance with local waste management regulations.



Warranty

Products that you buy directly from our **Porodo** website or shop come with a 24-month warranty.

When you buy **Porodo** products from any of our approved sellers, you only get a 12-month warranty. If you want to extend this warranty, go to our website at **porodo.net/warranty** and fill out the form with your information. Don't forget to upload a picture of the product too. After we've checked and accepted your request, we'll send you an email to confirm that your product's warranty has been extended.

For more info, please check:
porodo.net/warranty

Contact Us

If you have any questions about this Privacy Policy, please contact us at:
info@porodo.net

Website: **porodo.net**

Service Support: **support@porodo.net**

Instagram: **porodo**