

**LéPRESSO**



**LePresso**

**CREMA PRO Multi-Capsule  
Coffee Machine**

SKU: LPCFFM0039

# Table of Contents

<b>Safety Precautions</b>	<b>2</b>
<b>Product Overview</b>	<b>5</b>
<b>First Use</b>	<b>6</b>
<b>Power On and Off</b>	<b>7</b>
<b>Coffee Preparation</b>	<b>8</b>
<b>Preparing Latte</b>	<b>10</b>
<b>Programming Quantity</b>	<b>13</b>
<b>Maintenance and Cleaning</b>	<b>15</b>
<b>Specifications</b>	<b>17</b>
<b>Warranty</b>	<b>18</b>
<b>Contact Us</b>	<b>18</b>

# Important Safety Precautions

## **Intended Use**

**1.** This appliance is designed for use in household and similar environments, including:

Staff kitchen areas in shops, offices, and other workplaces

Farmhouses

Hotels, motels, and other residential environments

Bed and breakfast type settings

**2.** It is prohibited to make any technical modifications to the machine. Using the machine for unauthorized purposes could present serious hazards.

**3.** The machine should not be used by children under 8 years of age, or by individuals with physical, sensory, or mental impairments, or those lacking the necessary experience, unless they are supervised or have received instructions on the safe use of the machine and understand the potential dangers.

**4.** Do not allow children to play with the machine. Keep the machine and its mains lead out of the reach of children under 8 years old. Cleaning and maintenance must not be performed by children unless under direct supervision.

## **Installation Site**

**1.** Place the coffee machine in a secure location where it cannot be easily overturned or cause injury.

**2.** Do not store the machine in temperatures below 4°C (39.2°F) as freezing may cause damage. Avoid using the machine outdoors.

**3.** Do not place the machine on extremely hot surfaces or near open flames.

## **Power Supply**

Connect the coffee machine to an appropriate mains socket. The voltage should match the specifications on the appliance's identification plate.

### **Power Supply Cable**

**1.** Do not operate the coffee machine if the power cord is damaged. If the power cord is damaged, have it replaced by the manufacturer or a relevant service center to avoid any risks. The power cord should not be placed on corners, sharp edges, or hot surfaces.

**2.** Do not carry or pull the coffee machine by the power cord. Never remove the plug by pulling on the cord and avoid touching it with wet hands.

**3.** Ensure that the power cord does not hang loosely from tables or shelves.

## **Danger of Electrocution**

Never allow live parts to come into contact with water. Do not immerse the machine in water.

## **Protect Children Under 8 Years of Age**

Keep children away from the machine, as they may not be aware of the risks associated with electric household appliances. Ensure that the machine and its packaging materials are kept out of the reach of children.

## **Danger of Burns**

Avoid touching hot parts (such as the cartridge holder group) immediately after use. Be cautious of any potential splashes of hot liquid while dispensing the drink.

## **Cleaning**

Before cleaning, always unplug the machine and allow it to cool down. Never immerse the machine in water! It is strictly prohibited to tamper

## **Capsule Compartment**

This machine is designed to be used only with compatible capsules. Do not insert your fingers or any other objects into the capsule compartment. The capsules can be used only once.

## **Machine Disposal at the End of Its Operational Life**

Information for the User: The symbol of a crossed-out wheeled bin on the appliance or its packaging indicates that the product must be disposed of separately from regular waste at the end of its operational life. The user must take the appliance to an appropriate collection center for electrical and electronic equipment disposal.

Proper disposal at a separate collection center ensures that the appliance is dismantled, recycled, treated, and disposed of in an environmentally friendly manner, which helps prevent potential negative effects on the environment and human health, while also encouraging the recycling of materials.

Failure to comply with proper disposal regulations may result in administrative sanctions as outlined by current regulations.

## **No Liability for Damage Caused by:**

- 1.** Incorrect use not in accordance with the intended purposes.
- 2.** Repairs not performed by authorized service centers.
- 3.** Tampering with the power supply cable.
- 4.** Tampering with any parts of the machine.
- 5.** The use of non-original spare parts and accessories.
- 6.** Failure to descale the machine.
- 7.** Storage in environments with temperatures below 10°C (50°F) or above 40°C (104°F).
- 8.** Use in areas with relative humidity above %95.
- 9.** Use of capsules other than those indicated.

# Product Overview

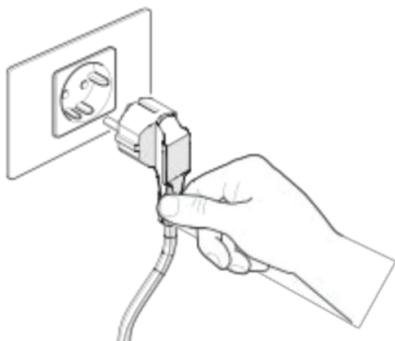


# First Use

**Note:** Place the coffee machine on a flat, stable surface, ensuring it is kept away from water and heat sources. Do not connect the machine to the mains supply yet. Please note that any damage to the machine resulting from failure to follow these instructions is not covered under warranty.

1. Lift and remove the water tank.
2. Rinse the tank thoroughly.
3. Fill the water tank up to the MAX level indicated, using only fresh, drinking water. Reattach the water tank to the machine and secure it by closing the cover.

**Important:** Hot water or other liquids can damage the tank and the machine. Never operate the machine without sufficient water in the tank. Always ensure the tank is filled before use.

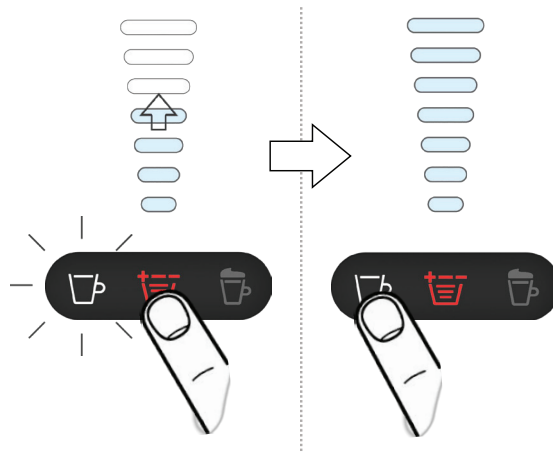


4. Insert the supply plug into the power outlet.



5. Press any button to start the heating process. The buttons will begin to blink in a cycling pattern, indicating that the machine is warming up.

6. The machine will be ready for use when the buttons light up with a steady glow.
7. During the first power-on, supply at least 500ml of water without inserting a capsule. Place a container under the coffee dispensing unit to catch the water.
8. Press the volume selector button repeatedly to set it to the 7th gear, then press the coffee button. After the automatic end, press the coffee button again. Repeat this process 3 times.



## Power On and Off

**Automatic Power Off:** To conserve energy, the machine will automatically turn off after 9 minutes of inactivity.

**Manual Power Off:** To manually turn off the machine, press and hold the "Espresso" and "Cappuccino" buttons simultaneously for 1 second, then release the buttons. When all indicator lights turn off, the machine is powered off.

**Power On:** To reactivate the machine, simply press any button again.





# Coffee Preparation

Ensure the switch-on/supply button lights up with a steady white light.

Never insert fingers or objects into the pod-holder. Only compatible capsules should be used in the pod-holder.

Single-dose capsules are designed to dispense one coffee/product. DO NOT reuse the capsules. Inserting two or more capsules at once can cause the machine to malfunction.

To ensure your coffee is at the perfect temperature, it is recommended to preheat your cup with hot water. Position the cup under the dispensing spout without inserting a capsule. Press one of the switch-on/supply buttons to dispense enough hot water to pre-heat the cup.

If the power supply is interrupted during the coffee brewing cycle, restore the power and restart the coffee supply procedure.

If the water tank runs out during the supply cycle, press the button to stop the machine. Then follow these steps:

1. Fill the water tank up to the MAX level indicated.
2. Press the power-on/supply button you previously selected. The button will start flashing, and the coffee supply procedure will restart.

After approximately 7 uses of capsules, empty the capsules drawer. The machine is now ready for the next coffee supply.

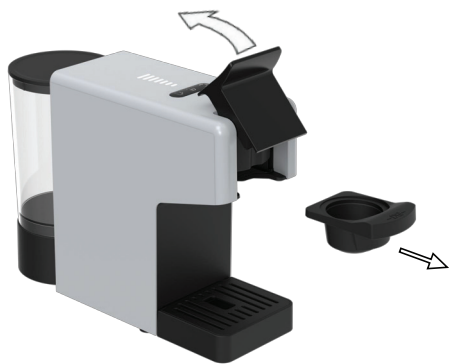


Place the cup under the coffee dispenser for a classic espresso.



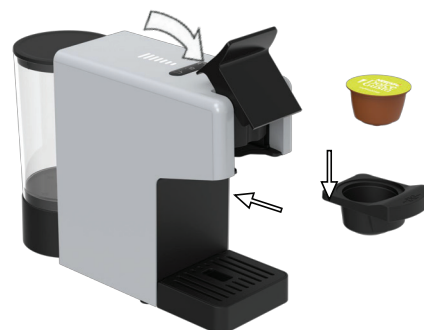
Remove the drip tray to accommodate cups of different sizes for a longer coffee.

1



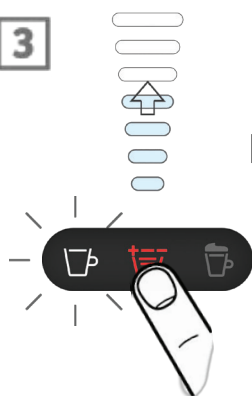
1. Open the locking handle and pull out the capsule holder.

2

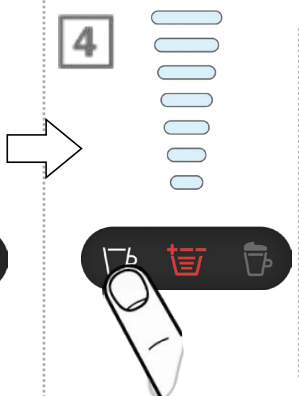


2. Insert the capsule into the capsule holder, then reinsert it back into the machine. Close the locking handle securely.

3

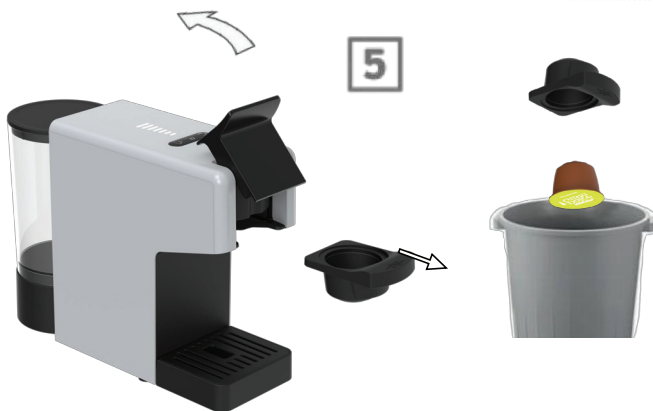


4



3. The indicator light will blink while the machine is heating. Once the light becomes steady white, the machine is ready for use. Use the

5



volume selector to adjust the display to match the number of bars shown on the capsule, or customize the number of bars according to your preference.

**4.** Press the Coffee button to begin beverage preparation. Wait for the process to complete. You can stop the extraction at any time by pressing the start button.

**5.** Once brewing has finished, wait a few seconds before opening the locking handle. Avoid opening the lever too soon. Remove the capsule holder and dispose of the used capsule properly.

**6.** Rinse both sides of the capsule holder with water and dry it. Reinsert the capsule holder back into the machine. Your beverage is now ready to enjoy.

The button will blink with a white light during the dispensing process.

To prepare another coffee, wait for the switch-on/supply button to light up with a steady white light.

## Preparing Latte



**1.** Fill the milk container up to the MAX indicator (at least 100ml). Place the lid on the container and connect the Latte Cup System to the machine. The Latte light will blink while the machine is heating. Once the indicator light turns steady white, the machine is ready for use.

The machine will use all the milk in the container and will stop automatically once it's empty. For the best milk froth, it is recommended to use skimmed or semi-skimmed cow milk at refrigerator temperature (around 4°C).

**Note:** You can also use soy, almond, or oat drinks for your preparations. In this case, it is essential to clean the Rapid Cappuccino System in the dishwasher after each use.

**Warning:** Plant-based beverages may contain allergens (such as gluten, almonds, or soy) and should be handled carefully by individuals with food allergies. The volume of froth will depend on the type of beverage used and its temperature.



**2.** Open the locking handle and remove the capsule holder.



**3.** Insert the capsule into the capsule holder, then reinsert the holder back into the machine. Close the locking handle securely.



**4.** Press the Latte button to begin the preparation process. (Approximately 20 seconds)

**5.** Use the volume selector to adjust the volume display according to the number of bars shown on the capsule, or choose your preferred amount of bars. Then press the Coffee button.

**6.** Once the machine stops brewing, open the locking handle, remove the capsule holder, and discard the used capsule properly.

The preparation will begin after approximately 15 seconds when the lights start blinking.

You don't need to wait for the milk to finish frothing; you can press the coffee button directly. After the milk froths, the coffee will be automatically brewed.

**7.** When milk needs to be added, remove the milk container lid and fill the container. Do not exceed the MAX level. Repeat steps 2–6.

**Be Careful:** When pouring milk into the



container, ensure it does not spill over. If necessary, clean any spills with a cloth. Do not place the milk pack on top of the milk container, as this could cause the container to become unhooked from the machine.

**8.** After a maximum of 30 minutes of non-use following your milk recipe preparation, disassemble the milk jug (refer to the "Quick Assembly Guide" section). Clean all four dismantled components in a dishwasher or by hand. Dry all parts with a clean towel, cloth, or paper, and then reassemble the system.



Or



Place the 4 dismantled components in the upper tray of your dishwasher and run a program at a high temperature (50°C / 60°C).

Soak all components in hot drinking water with mild/soft detergent for at least 30 minutes. After soaking, rinse thoroughly with hot drinking water.

## Programming Quantity

**Note:** It is recommended to keep the factory settings for Latte to ensure the best in-cup results for each of our coffee varieties.

**Note:** It is recommended to keep the factory settings for Latte to ensure the best in-cup results for each of our coffee varieties.


1. Programming the Latte Quantity

1.1 Follow steps 1–3 in the "Preparing Latte" section.

1.2 Touch and hold the Latte button for at least 2 seconds to enter programming mode. Brewing will begin, and the button will blink rapidly.

1.3 Release the button when the desired volume is reached. The Latte volume will now be stored for the next Latte preparations.



Timing			
	Min	Default	Max
 Latte	5sec	20sec	60sec

2. Restoring Quantity to Default Settings

**Note:** This procedure resets the coffee volumes and power-off timing to the default values.

2.1 Touch and hold both the Espresso and Lungo buttons for at least 3 seconds to enter the restoring quantity mode.

2.2 Release the buttons. All buttons will blink three times, indicating that all volumes have been reset to the default settings.





# Maintenance and Cleaning

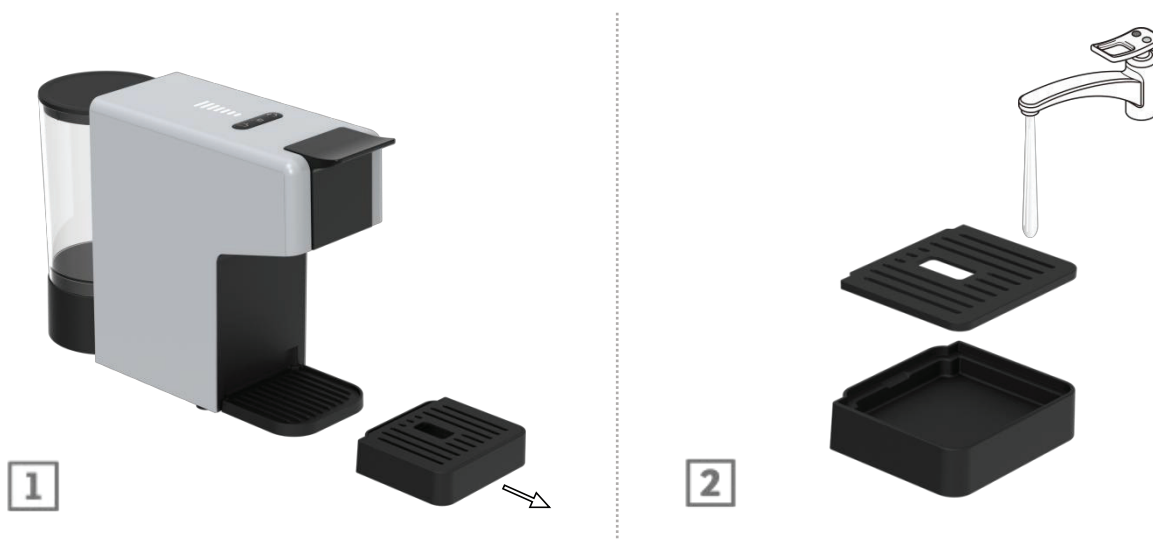
- 1.** Never use solvents, alcohol, or other aggressive substances, nor ovens, to dry the coffee machine components. Clean the machine components (excluding electric parts) with cold or lukewarm water and non-abrasive cloths or sponges. All removable components can be cleaned in the dishwasher.
- 2.** Do not leave water in the tank or water circuit for more than 3 days. If this occurs, drain the tank and circuit, rinse them thoroughly, and refill with fresh water. Then, perform a delivery cycle without a capsule before brewing any coffee or other beverages.

## Coffee Dispenser Cleaning

To clean the coffee dispenser, run a weekly coffee brewing procedure without inserting a capsule.

## Cleaning the Capsule Collecting Drawer and the Drip Tray

The used capsule collecting drawer and the drip collecting tray should be emptied and cleaned after every 4–5 coffee preparations or every two to three days.





Remove the drip tray and take out the drip tray grill. Rinse both components with water.



Regularly check that the used capsule collecting drawer and the drip collecting tray do not become full, as this could cause malfunctions or damage to the machine.



Limescale naturally builds up with extended use of the appliance. The machine requires descaling every 4–3 months and/or whenever a reduction in water flow is noticed.



In the event of any operational conflicts, this user and maintenance manual takes precedence over any instructions provided for accessories and/or separately sold components.



For descaling, use a non-toxic and/or harmless descaling product specifically designed for coffee machines, which is commercially available.



Do not consume the descaling solution or any products dispensed during the descaling cycle. Never use vinegar as a descaling solution.



- 1.** Remove and empty the water tank.
- 2.** Refill the tank with a descaling solution and water, following the instructions provided on the descaling product packaging. Refit the tank securely.
- 3.** Place a suitable container under the spout to collect the dispensed liquid.
- 4.** Press the volume selector button repeatedly to set it to the 7th gear, then press the coffee button. Dispense two cups (approximately 150 ml each) of water.
- 5.** Allow the descaling solution to work for about 15–20 minutes.
- 6.** Switch on the machine by pressing any button. Press the volume selector button again to set it to the 7th gear, then press the coffee button. The preparation will stop automatically.
- 7.** Repeat step 6 until the water tank is completely empty.
- 8.** Remove the tank, rinse it thoroughly with fresh drinking water, and refill it completely.
- 9.** Place a suitable container under the dispenser. Press the coffee button and dispense the full content of the tank.
- 10.** When the water is finished, refill the tank and repeat step 6. Once completed, the descaling cycle is finished.

## Specifications

Rated Voltage	220-240V
Rated Frequency	50/60Hz
Rated Power	1400W
Pump Pressure	20 BAR
Power Cord	UK 3-Pin Plug

Milk Tank Capacity	200mL
Water Tank Capacity	850mL
Product Weight	3kg
Product Size	338 x 159 x 236mm
Included Adaptors	Dolce Gusto,Nespresso, Coffee Powder

## Warranty

Products that you buy directly from our **LePresso** website or shop come with a 24-month warranty.

The 24-month warranty applies to products purchased directly from our **LePresso** website or store. If **LePresso** products are bought from any of our verified retailers, then the product is eligible for only a 12-month warranty. To extend your product's warranty, visit our website <https://www.lepresso.com/warranty> and fill in your details in the provided form along with an uploaded picture of the product to process your request. Once approved, you will receive a confirmation email of the extended product warranty. Upload the required information within 48 hours of purchase to be eligible for a 24-month warranty period.

For more info, please check:

<https://www.lepresso.com/warranty>

## Contact Us

If you have any questions or concerns about our Shipping and Returns Policy, please contact us at: [info@lepresso.com](mailto:info@lepresso.com)

Website: <https://www.lepresso.com/>

Instagram: [lepresso\\_official](https://www.instagram.com/lepresso_official)