



Porodo Soundtec

**Glimpse ANC Active Noise-Cancellation
and ENC Earbuds**

SKU: PD-STWLEP040

Table of Contents

Introduction	2
Specifications	2
Overview	2
App Connection Guide	3
A. iOS Devices	3
B. Android Devices	4
C. Connection Instruction	7
Display Guide	7
Pairing Guide	8
Function Instructions	8
Charging Case Function	9
App Function Instructions	18
Disposal	22
Warranty	23
Contact Us	23

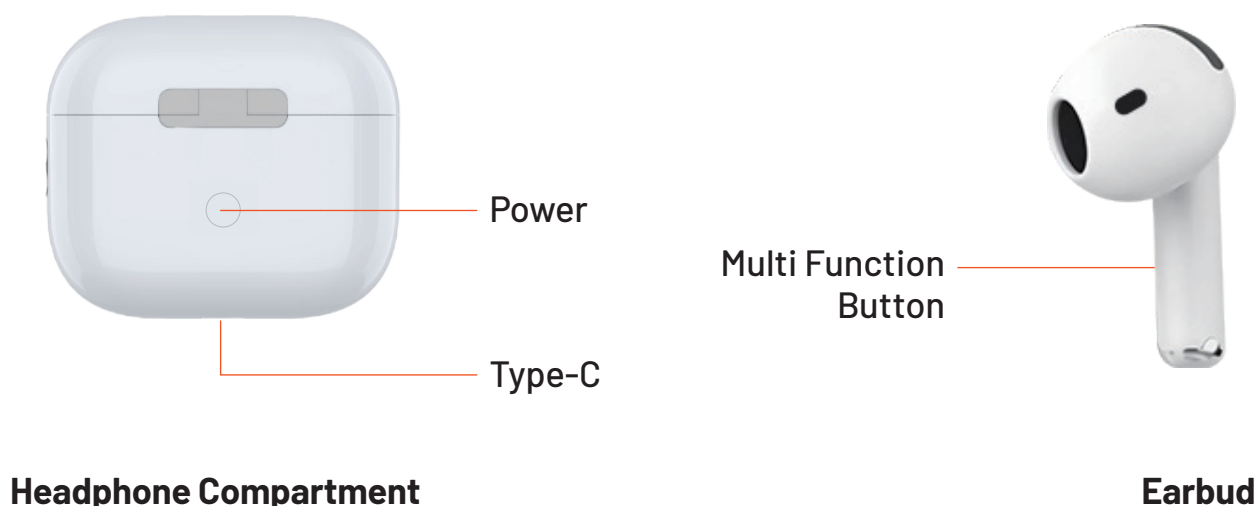
Introduction

Thank you for choosing our smart products. To fully understand the capabilities of your device, we recommend that you read this manual carefully. Smart headphones primarily use Bluetooth to connect to your mobile phone, offering enhanced features and services to improve your experience.

Specifications

Battery Capacity	300mAh
Recharge Time	1.5H
Playtime	4H
Charging Interface	Type-C
Bluetooth	5.4
Transmission Range	10M
Supported Languages	English (default), Arabic, Russian, Spanish, Italian, Portuguese, Turkish, Vietnamese, Thai, Malay, Farsi, German, French, Polish, Greek, Chinese
Case Bluetooth Name	PD-STWLEP040 Case
Earbud Bluetooth Name	PD-STWLEP040 TWS

Overview



App Connection Guide

Search for "FereFit" in the App Store to download and install the app. Once installed please register and log in.

A. iOS Devices

1. Open the app. It will automatically prompt you for permission. Please grant the necessary permissions (as shown in Figure 1).
2. On the device interface, tap "Search Device," find the Bluetooth name PD-STWLEP040 Case, and click to connect. You can also scan the QR code on the headset compartment to establish the connection.
3. Once connected, a pop-up window will appear. Click to allow notifications then exit and re-enter the program (as shown in Figure 2).
4. Reopen the app, and the connection will be completed.

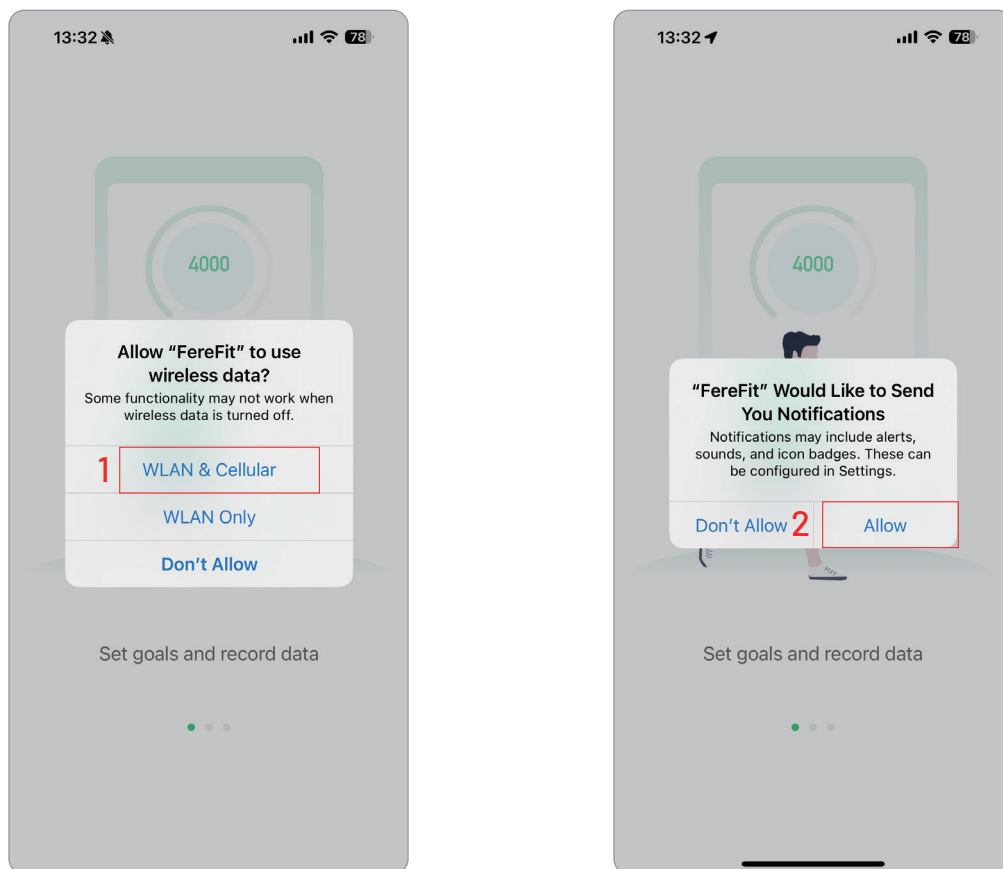


Figure 1

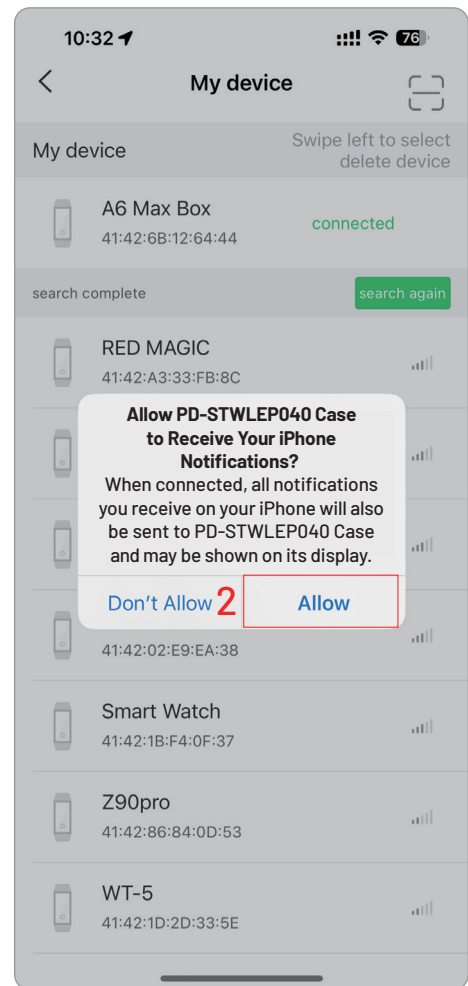
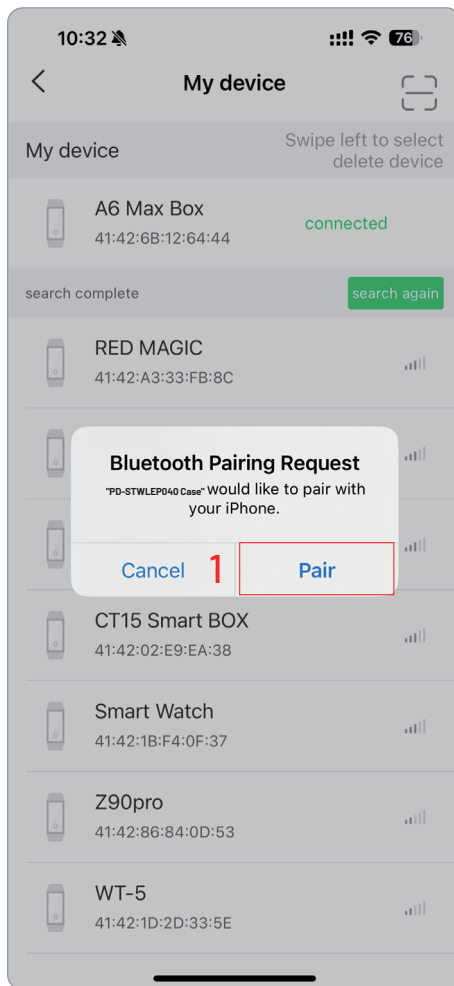


Figure 2

B. Android Devices

Connecting to the app for the first time with an Android phone

- 1.** Turn on the phone's location and Bluetooth.
- 2.** Open the app, agree to the terms, swipe left, swipe left again, and click "Experience Now."
- 3.** Enter the login interface where you can either register and log in or skip the login process (for skipping, follow the provided instructions).
- 4.** Click "Skip Login" to enter the app interface. The app will prompt you for permissions. Click "Always Allow" (as shown in Figure 3).

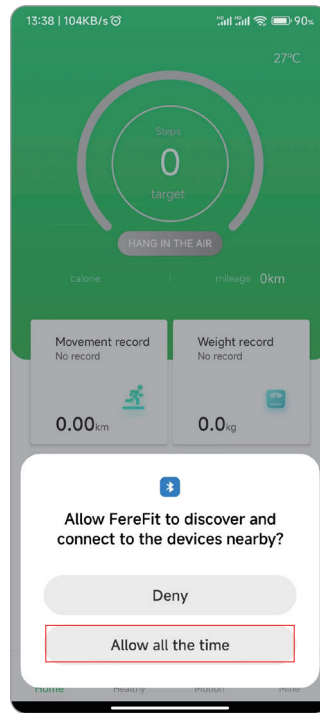


Figure 3

5. After granting the first permission, the app will automatically display a second window. Click to open the notification permission (as shown in Figure 4).

Note: This permission must be enabled.

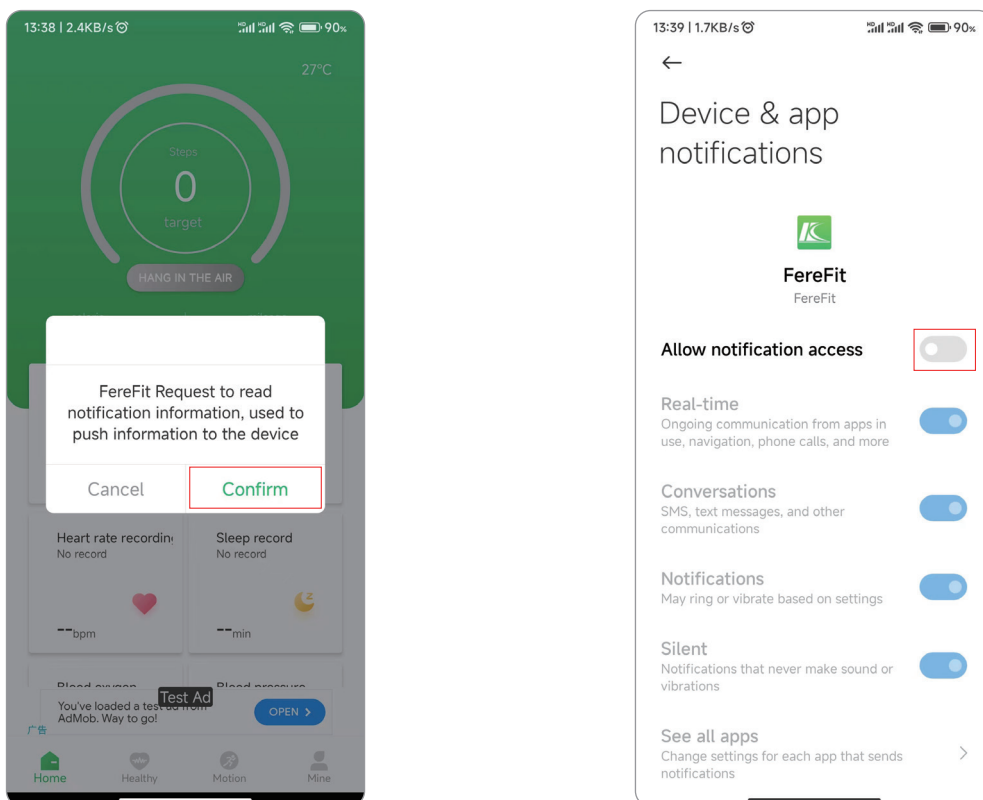


Figure 4

6. After granting the permission, return to the app.
7. Click "Search Device". The app will automatically prompt three permissions all of which must be enabled (as shown in Figure 5).

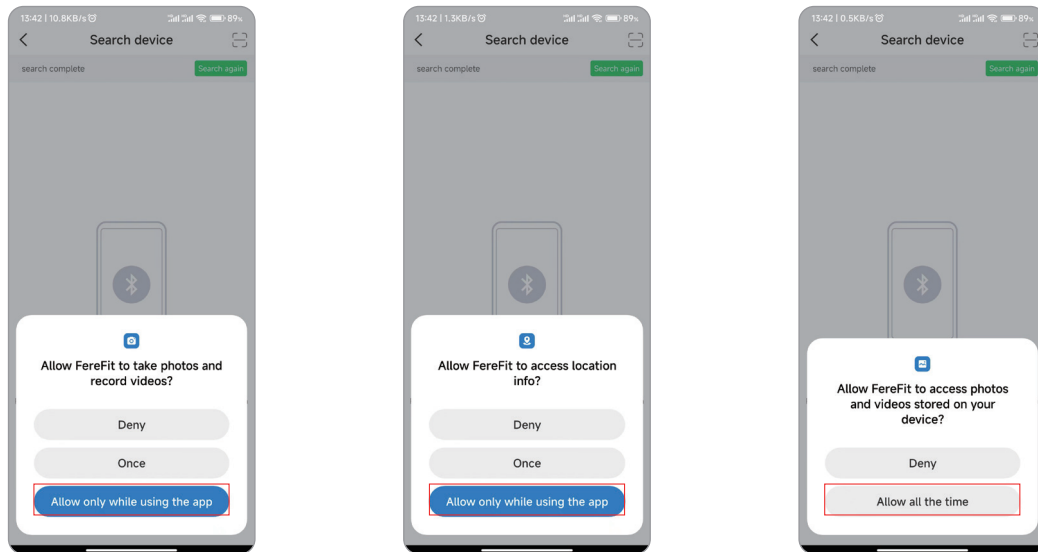


Figure 5

8. In the Search Device interface, find the Bluetooth name "PD-STWLEP040 Case" and click "Connect". Alternatively, scan the QR code on the headset compartment to establish the connection (as shown in Figure 6).
9. Once connected, the setup is complete.

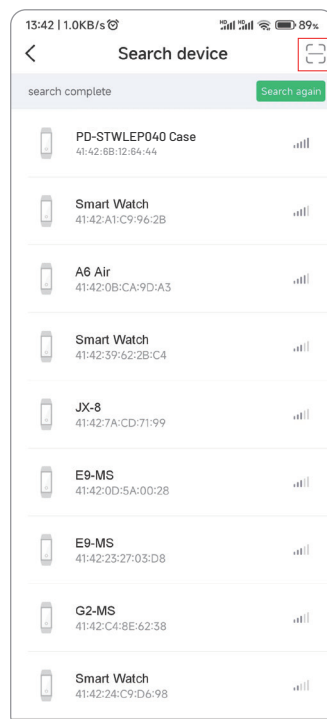


Figure 6

C. Connection Instruction

These earbuds use standard Bluetooth pairing.

1. Open the charging case to activate pairing mode.
2. Use the app to search for devices, select "PD-STWLEP040 Case", and tap "Connect."
3. Go to Bluetooth settings on your phone, find the earbud's name "PD-STWLEP040-TWS" and tap "Connect."

See Figure 7 for reference.

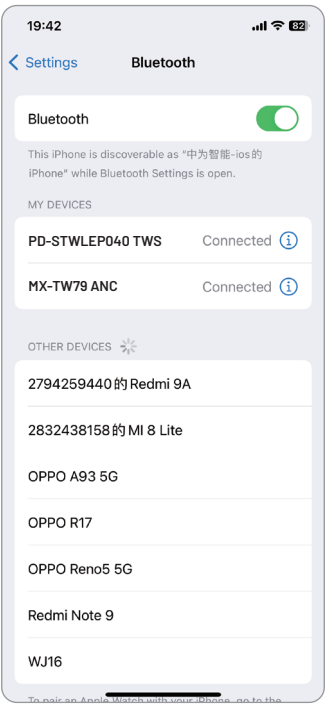


Figure 7

Display Guide

Blue: Earbud casing and app are connected.
Red: Earbud compartment and app are not connected.

Left Earbud Status: Indicates whether the left earbud is in the compartment and shows its battery level.

Right Earbud Status: Displays the right earbud's status and battery level. The icon turns gray when the earbud is removed from the compartment.

Headphone Compartment Battery: Displays the battery level of the charging case.



Gray earbud icon: Earbud and casing are not connected.



White earbud icon: Earbud and casing are connected.



Phone icon: Headphones and phone are connected.

Pairing Guide

1. Open the earbud case cover and keep it open.
2. Go to your phone's system settings, navigate to Bluetooth, find the earbud's Bluetooth name "PD-STWLEP040 TWS", and tap Connect. Once connected, the status bar will display the earbud and phone connection icons.

Note: If the earbud and mobile phone are not connected, the following operations cannot be completed.

3. Open the app. A window will automatically pop up, prompting you to bind, pair and confirm the connection with a single click.

Important Note: Ensure the app is not connected to any other devices. If it is unbind it first before reopening the app.

Function Instructions



Music Playback	Single-Tap	Tapping either the left or right earbud plays or pauses audio and answers incoming calls.
	Double-Tap	A double tap on either earbud ends a call.
	Three Strikes	There is no assigned function for certain gestures.
	Long Press	Switch between Noise Cancellation or Transparency modes.
Earbud Function	Power On	The charging case automatically powers on when opened.
	Shutdown	The earbuds will automatically shut down after three minutes if there is no Bluetooth connection.
	Auto Pairing	The earbuds are automatically paired when taken out of the case.
	Manual Pairing	To manually power on the earbuds, open the lid and press and hold the power button for three seconds.

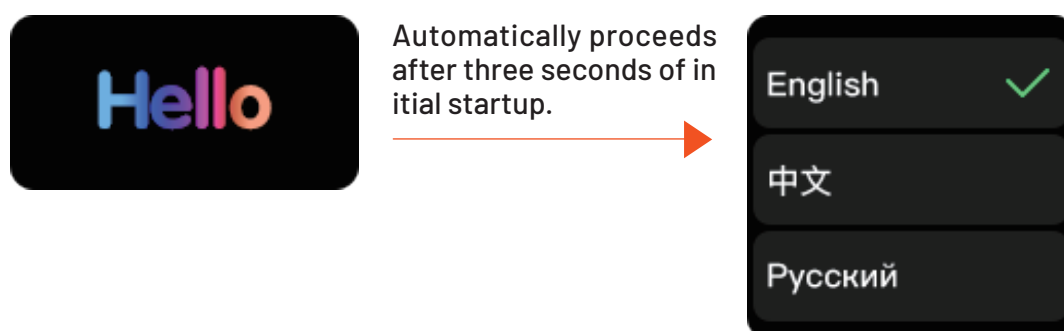
Charging Case Function	Power On	To enter pairing mode, press and hold the power button for two seconds.
	Shutdown	To turn off the earbuds, press and hold the power button for three seconds.
	Screen On/Off	Press the power button.
	Return to Home	Press the power button.

Note: The MFB key can be configured in the earbud casing menu by navigating to Button Settings > App Home > Key Settings.

Charging Case Function

1. Initial Power On

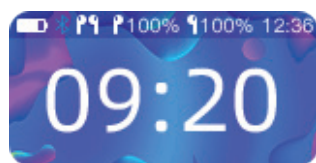
Press and hold the power button for three seconds to turn on the device. Select your preferred language, then either scan the app's QR code or search for the connected device.



2. Wallpaper Settings



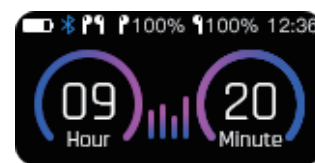
Template 1



Template 2

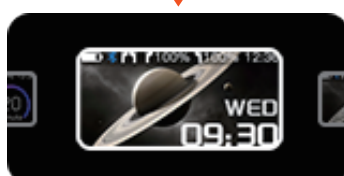


Template 3



Template 4

Press and hold to switch between different options.



3. Multi-Function Button Settings

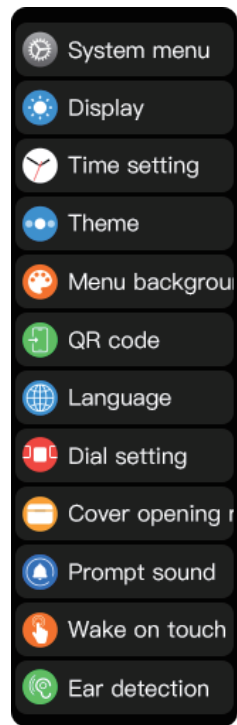
A. Default Mode: Allows synchronization or individual use of left and right earbuds. Operation modes include single, double, triple-tap, and long press. Configurable functions include voice assistant activation, previous song, next song, volume up, volume down, play/pause, and ANC (Active Noise Cancellation).

B. Incoming Call Mode: Operation modes include single tap, double tap, and long press. Functions can be configured to answer or hang up calls.

C. In-Call Mode: Operation modes are single tap, double tap, and long press, with the option to set the hang up function.



4. General Settings



A. System Menu

About: View the Bluetooth name, version, Bluetooth address, and headset Bluetooth name.

Factory Reset: Options to confirm or cancel the factory reset.

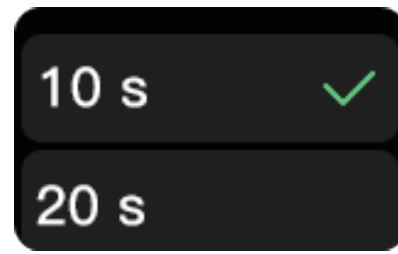
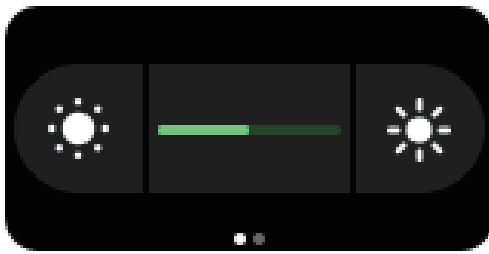
Reboot: Swipe right to restart the device.

Power Off: Swipe right to shut down the device.

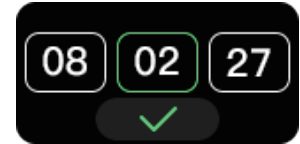
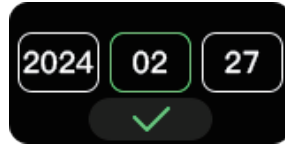


B. Display: Modify the screen brightness to suit your preference.

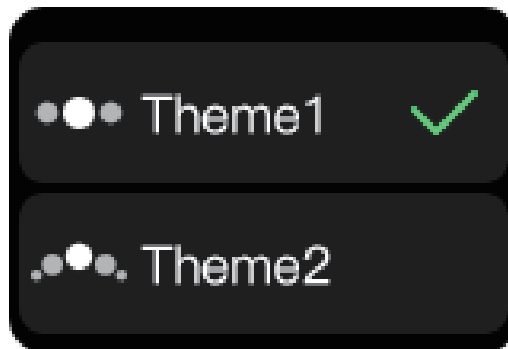
Screen Timeout: Swipe left to set the duration before the screen turns off.



C. Time Settings: Adjust the date, time, and select your preferred time format.



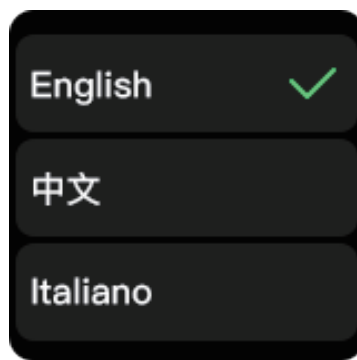
D. Theme: Choose from a variety of theme styles to customize the appearance.



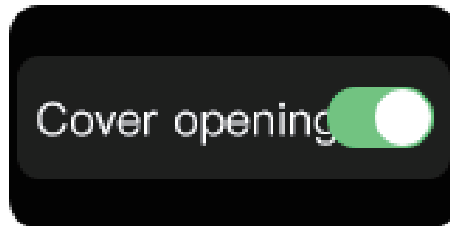
E. Menu Background: Access a variety of menu backgrounds to personalize your interface.



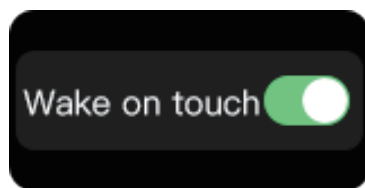
F. Language: Offers up to 17 languages, enabling you to select your preferred language setting.



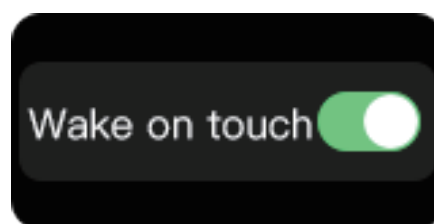
G. Interactive Animation: A pop-up animation is displayed when opening the cover to insert or remove the earbuds.



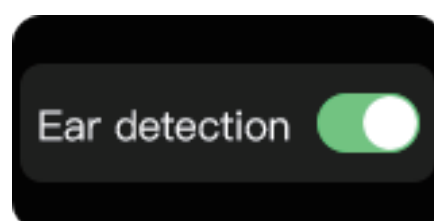
H. Prompt Sound: Sound prompts are activated upon opening the cover and during screen operations. The volume of these prompts can be adjusted to suit your preferences.



I. Wake on Touch: After turning it on, tapping the earbud compartment screen will automatically activate the wake-up feature.



J. In-Ear Detection: Once activated, the device detects when earbuds are placed in ears or taken out.



5. Charging

When the earbud compartment is charging, the screen displays the charging interface.



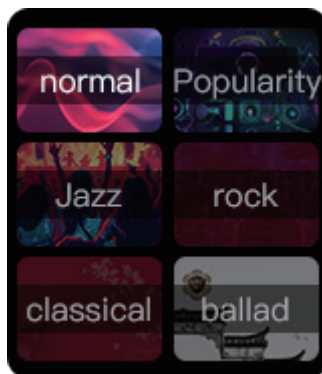
6. Noise Reduction

This feature includes three modes: Normal, ANC (Active Noise Cancellation), and Transparent. Tap the corresponding icon to toggle it on or off.



7. Sound Effects

Choose from six types of sound effects: Normal, Pop, Rock, Jazz, Classical, and Ballad. Tap the corresponding icon to activate them.



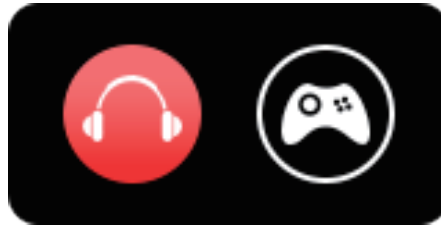
8. Music

Supports lyric scrolling at the top of the screen. Use the left key to skip to the previous song and the right key to advance to the next song. Pause or resume playback using the middle button.



9. Mode Selection

Easily switch between Music mode and Game mode as needed.



10. AI Voice

Use AI voice commands to inquire about weather conditions, play music, and access other features.



11. Find Headphones

Tap the headphone icon to activate the flashing search state, allowing you to simultaneously locate both left and right earbuds.



12. Find My Phone

Tap the icon to initiate the search mode and locate your phone.



13. GPS

Use this feature to check your current location.



14. Timer

This feature allows you to manually set the duration for timing. You can also reset the timer by pausing it during operation.



15. Stopwatch

Tap the right button to start the stopwatch and the left button to record lap times. You can review the recorded times directly on the device.



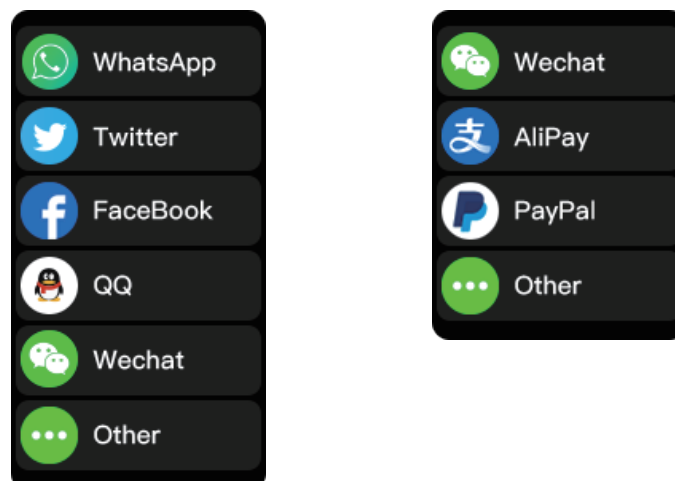
16. Cycle Tracking

Connect to the app to activate health reminders and track menstrual cycles effectively.



17. Namecard, Collection Code

Customize your app experience by setting up multiple namecards and collection codes.



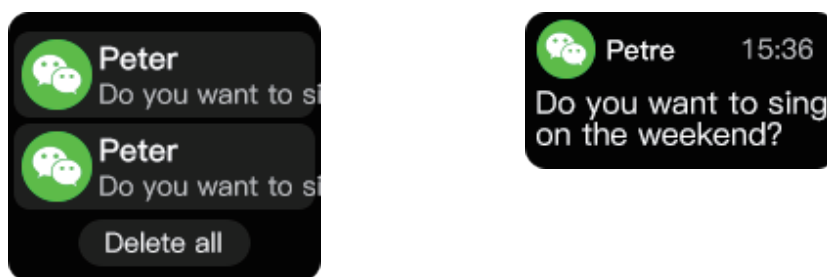
18. Calendar

The calendar feature displays the current date.



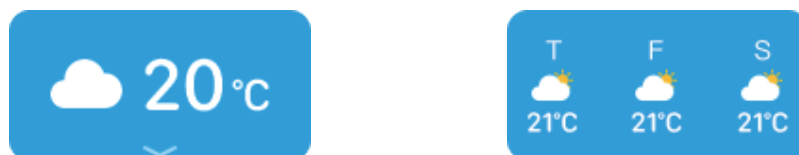
19. Messages

Receive app messages, tap on the message to view details, and swipe to the bottom to delete the message with a single tap.



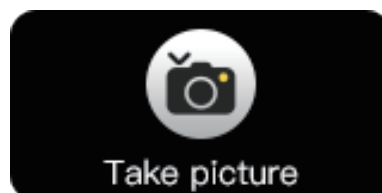
20. Weather

Displays the current weather and weather conditions for the past three days.



21. Camera

Connect to the app and tap to take photos.



22. Counter

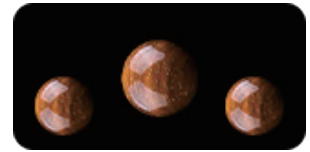
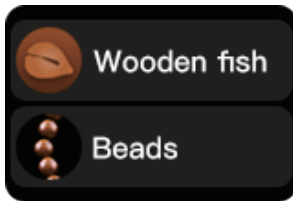
Tap the right button to increment the count, and the left button to reset it.



23. Game

A. Wooden Fish: Tap the screen to knock on the wooden fish.

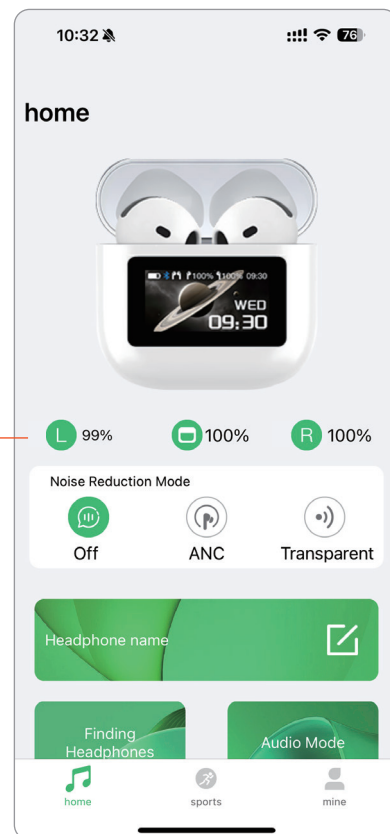
B. Beads: Swipe left to turn the beads.



App Function Instructions

A. Home

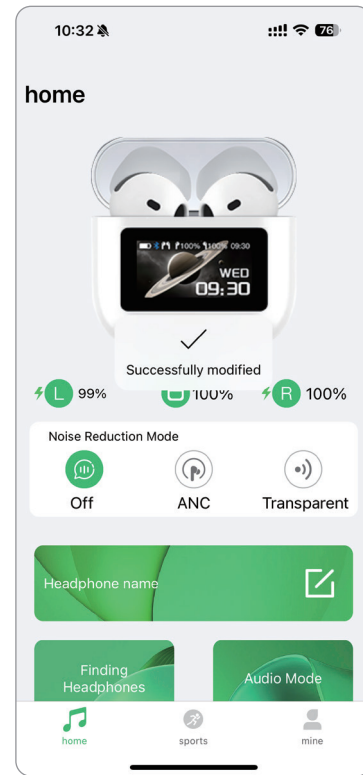
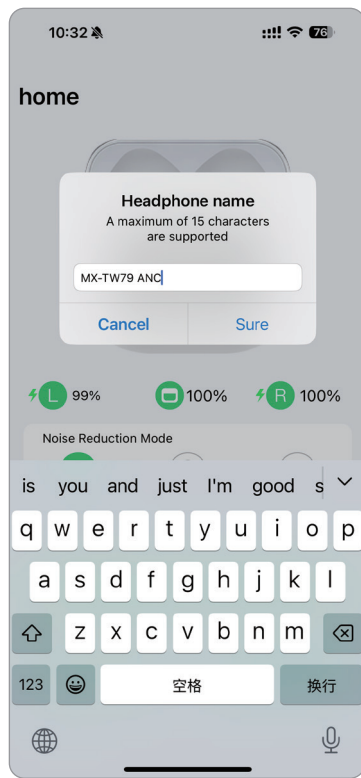
Battery Status Indicators (from left to right): Left earbud battery, Charging case battery, Right earbud battery



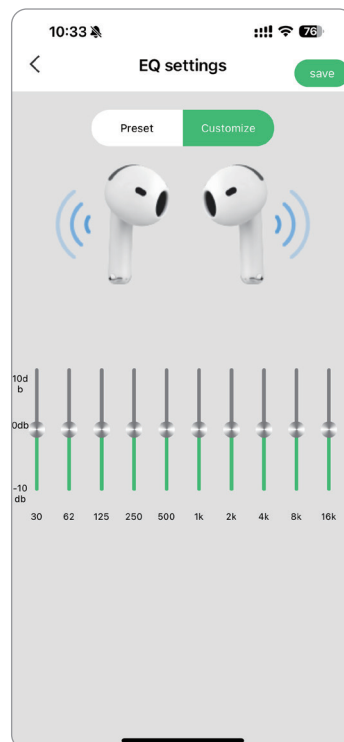
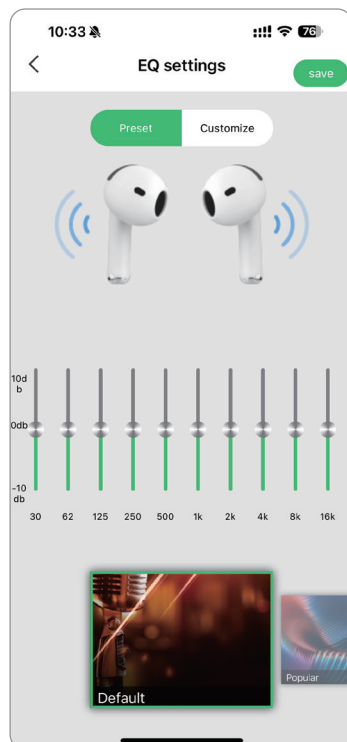
A.1 Headphone Name Modification:

1. You can change the name of your headphones. After editing, click "OK" to confirm the changes. A confirmation pop-up will appear indicating the modification was successful.

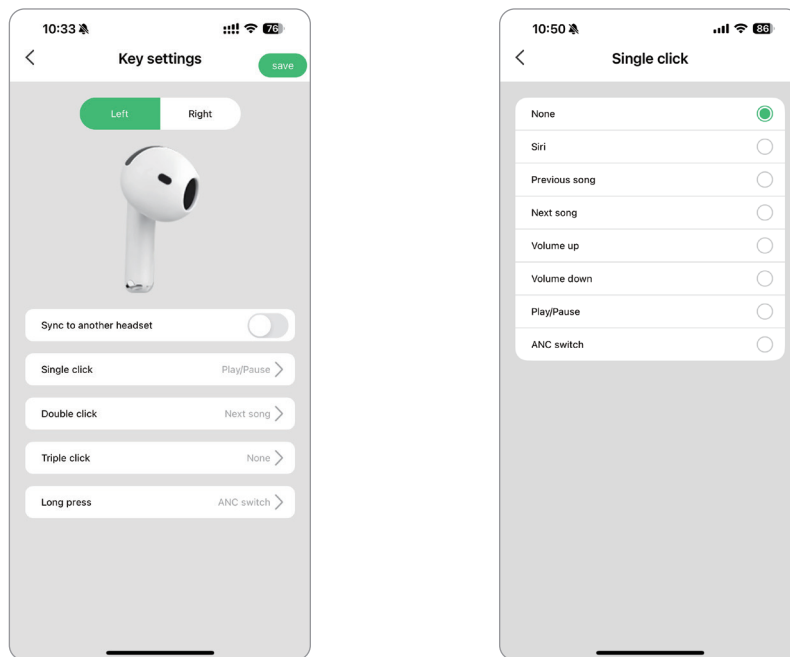
2. If the headphones are connected to a device, you must disconnect and then reconnect them for the changes to take effect.



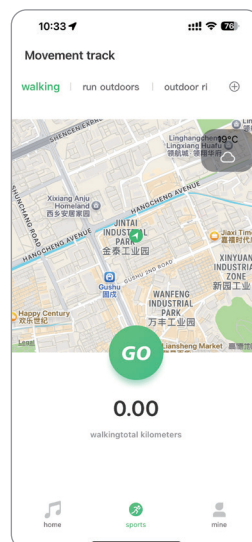
A.2 EQ Settings: Choose from several preset options: Default, Pop, Rock, Jazz Classical, Folk, or create your own Custom settings.



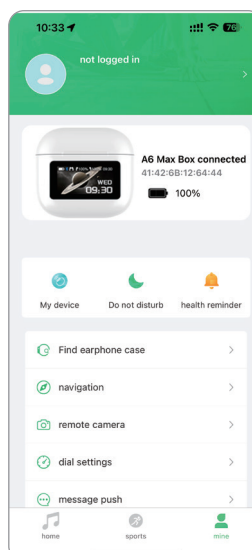
A.3 Button Settings: Configure the single tap, double tap, triple tap, and long press functions for both the left and right earbuds.



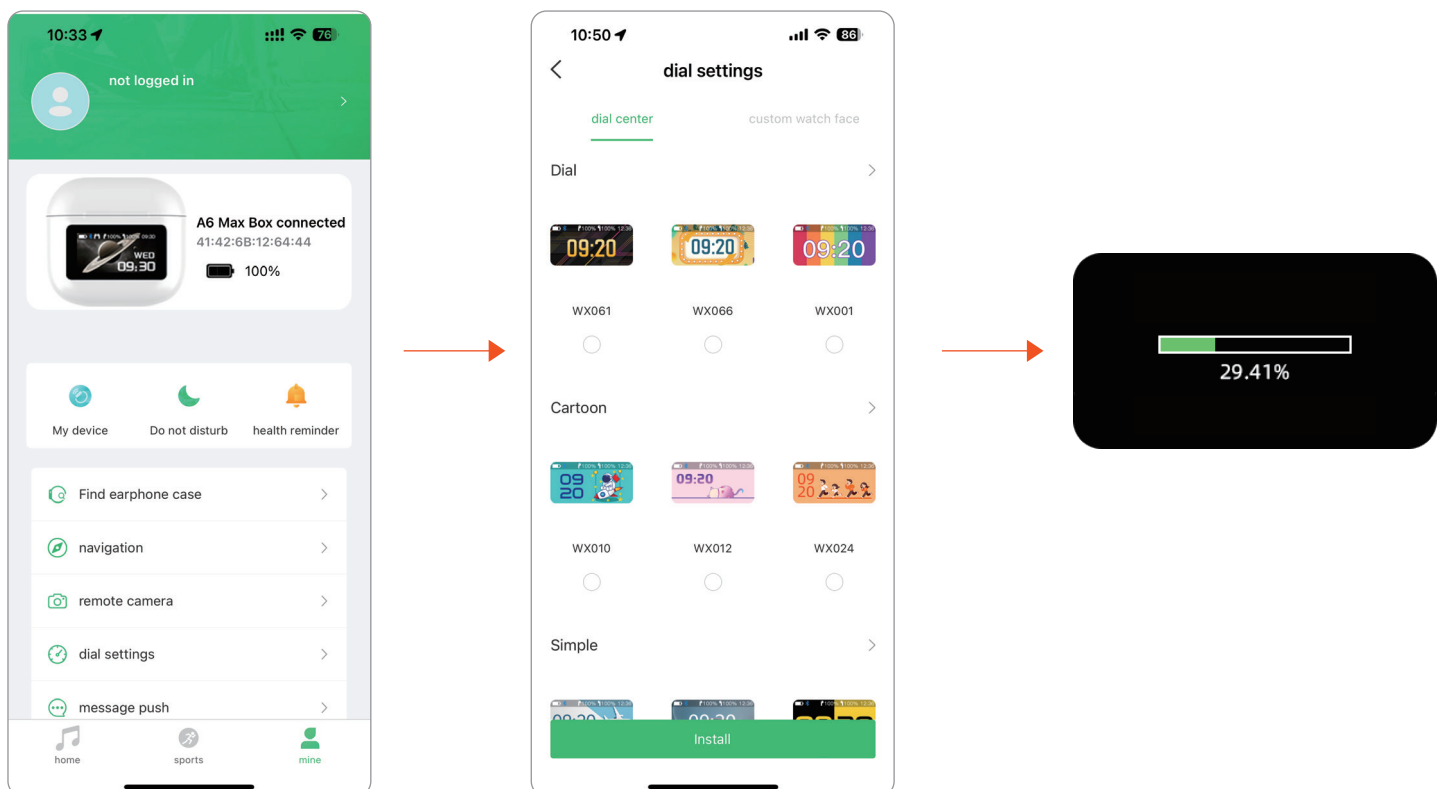
B. Movement Trajectory: Track your movement trajectory using GPS to visualize your walking routes on a map.

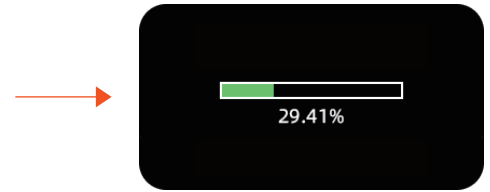
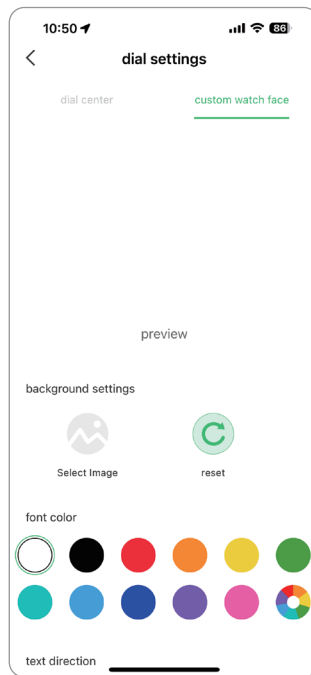
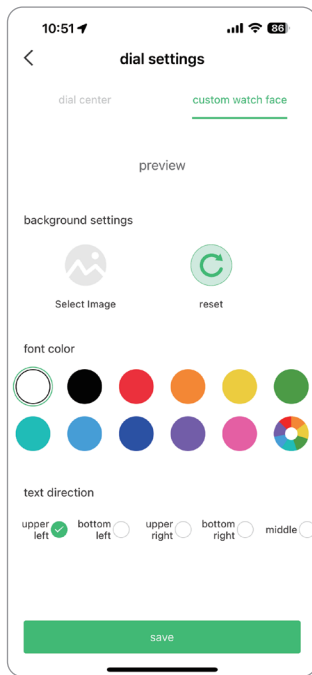


C. Mine



- C.1 Connection Status:** Displays the current connection status of the earphone compartment.
- C.2 Do Not Disturb:** When activated, there will be no pop-up reminders when the phone receives messages. Deactivating this mode will allow notifications.
- C.3 Health Reminder:** Set the menstrual cycle reminders in the app to synchronize automatically with the earphone compartment.
- C.4 Find Earphone Case:** Tap the 'Find Earphone Case' function in the app to light up the charging case for easy location.
- C.5 Navigation:** Navigate to your desired destination using the app's GPS functionality based on your current location.
- C.6 Remote Camera:** Use the app to remotely control the earphone compartment to take photos, syncing with your phone's camera.
- C.7 Dial Settings:**
- Choose and save your preferred watch face in the app. The earphone compartment screen will then display the same face.
 - Customize the watch dial by selecting the background, font color, and text direction. Click 'Save' to synchronize these settings with your device.





C.8 Message Push: Enable the app switch to receive notifications on your mobile phone. A pop-up reminder will appear in the earphone compartment when a message is received; the notification disappears when the compartment is closed.

C.9 Wallet: Link the payment code from the corresponding app to synchronize it with your earphone compartment for easy access.

C.10 My QR Card: Add your QR code from a selected app to sync it with the earphone compartment, allowing for quick scanning and sharing.

C.11 More Settings: Customize your experience by adjusting target settings measurement units, temperature units, and time system preferences.

C.12 Account Security: Modify your login password and manage account logouts to ensure your information remains secure.

Disposal

This product must not be disposed of as unsorted household waste. It is important to separate such waste for proper treatment and recycling, in compliance with local waste management regulations.

Warranty

Products that you buy directly from our **Porodo** website or shop come with a 24-month warranty.

When you buy **Porodo** products from any of our approved sellers, you only get a 12-month warranty. If you want to extend this warranty, go to our website at **porodo.net/warranty** and fill out the form with your information. Don't forget to upload a picture of the product too. After we've checked and accepted your request, we'll send you an email to confirm that your product's warranty has been extended.

For more info, please check:
porodo.net/warranty

Contact Us

If you have any questions about this Privacy Policy, please contact us at:
info@porodo.net

Website: **porodo.net**

Service Support: **support@porodo.net**

Instagram: **porodo**