

PORODO
LIFESTYLE



Porodo Lifestyle

Dual-Blade Pocket Shaver

SKU: PD-LFST128

Table of Contents

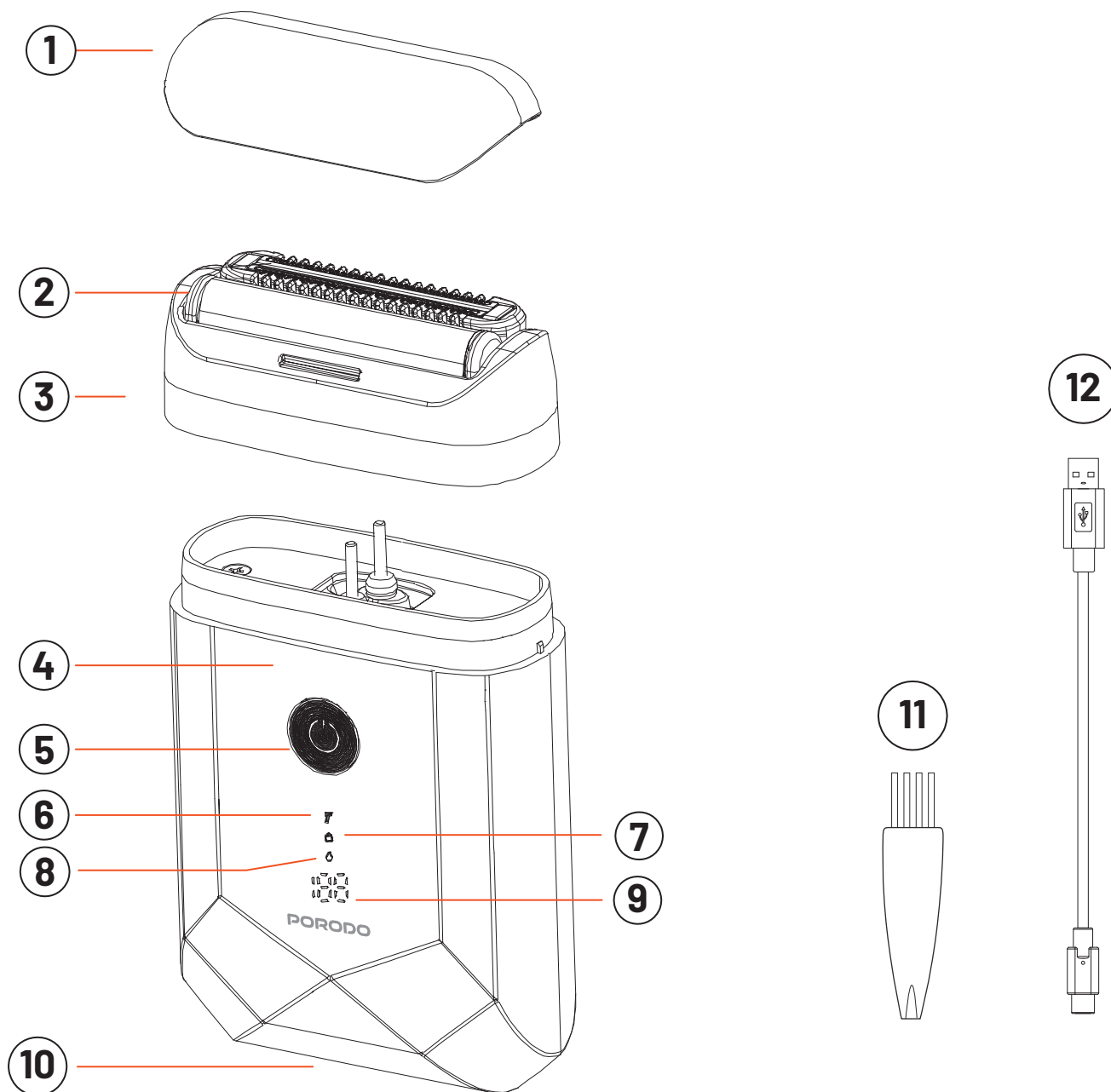
Precautions	2
Schematic View	3
Charging Method	4
Shaving Instructions	4
Display Description	5
Cleaning Maintenance	7
Troubleshooting	8
Environmental Information	9
Specifications	10
Warranty	11
Contact Us	11

Precautions

Warning: The handheld part can only be cleaned with water after it has been separated from the power cord.

- 1.** Keep the power adapter dry. Do not plug or unplug the power adapter with wet hands to avoid the risk of electric shock.
- 2.** Ensure that the voltage marked on the power adapter matches your local power supply.
- 3.** If the electric shaver is damaged, do not use it. Handle the issue according to the type of fault and have it repaired by the maintenance department of our company if necessary.
- 4.** People with impaired limbs, mental disabilities, or lack of relevant experience and knowledge (including children) must use the shaver under the supervision of a responsible adult.
- 5.** When using the power adapter, hold the outer shell of the adapter firmly. Do not pull the USB power cord directly when plugging or unplugging the charging plug.
- 6.** This product should only be charged with the matching power cord. Do not use accessories not provided by our company.
- 7.** Before use, check whether the knife net is damaged or deformed to prevent injury to your skin.
- 8.** The electric shaver can be cleaned with water, but do not soak it for long periods.
- 9.** Do not use salt water, hot water above 60°C, thinner, gasoline, alcohol, or other chemicals to clean the electric shaver.
- 10.** When traveling, ensure the protective cover is placed on the electric shaver to protect the mesh.
- 11.** During use and charging, the electric shaver may heat up slightly, which is normal.
- 12.** Please avoid charging the electric shaver for an extended period.
- 13.** It is recommended to charge, use, and store the electric shaver at temperatures between 5°C and 35°C. Do not store the electric shaver in direct sunlight or near other heat sources.

Schematic View



1. Protective cover

2. Blade assembly

3. Blade cover

4. Body

5. Switch button

6. Speed change logo

7. Travel lock icon

8. Washing reminder

9. Battery reminder

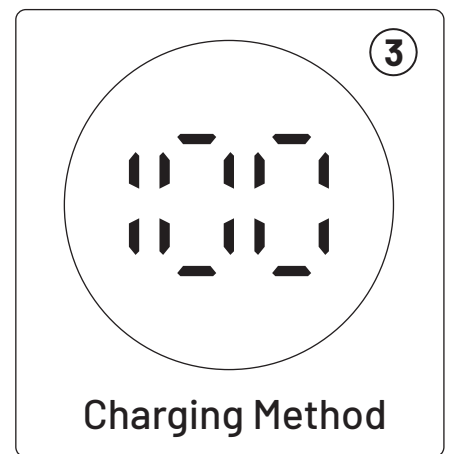
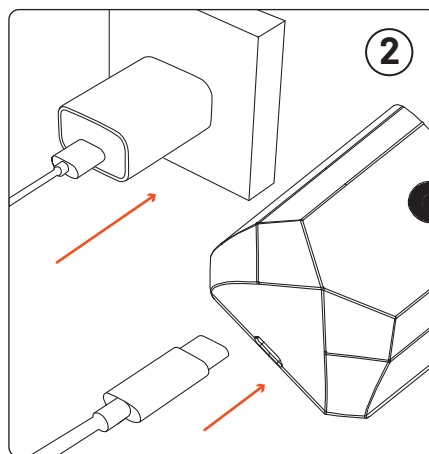
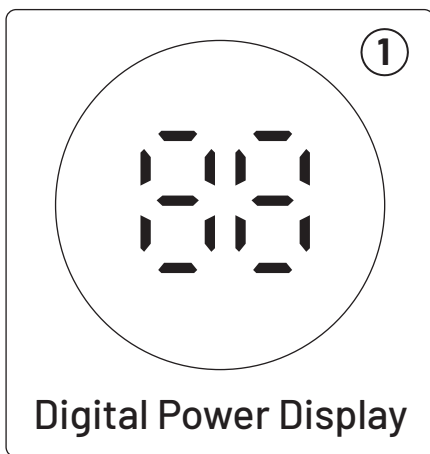
10. Charging port

11. Cleaning brush

12. USB power cord

Charging Method

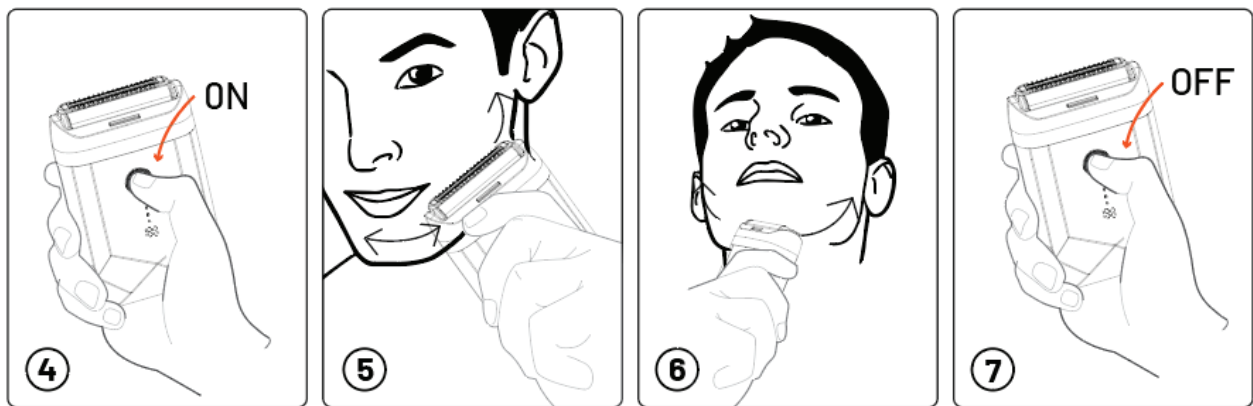
1. Turn off the shaver.
 2. Connect the Type-C charging cable to the USB port on the main body and the charger, then insert the charger into a 220V AC power socket. Ensure the charger is a 5V/1A model.
 3. Charging status: The digital display will show scrolling numbers, increasing sequentially until it is fully charged. Once fully charged, the display will show 100. If the display shows 10, the white light will flash to remind you to recharge.
 4. You can also connect the Type-C charging cable to the main body and charge it via a computer USB port.
 5. The display will indicate the remaining battery life. A fully charged electric shaver can provide up to 60 minutes of shaving time. However, the actual shaving time may vary depending on your shaving habits, beard type, and cleaning habits.
- Note:** This electric shaver can be used directly while connected to the power adapter for charging.



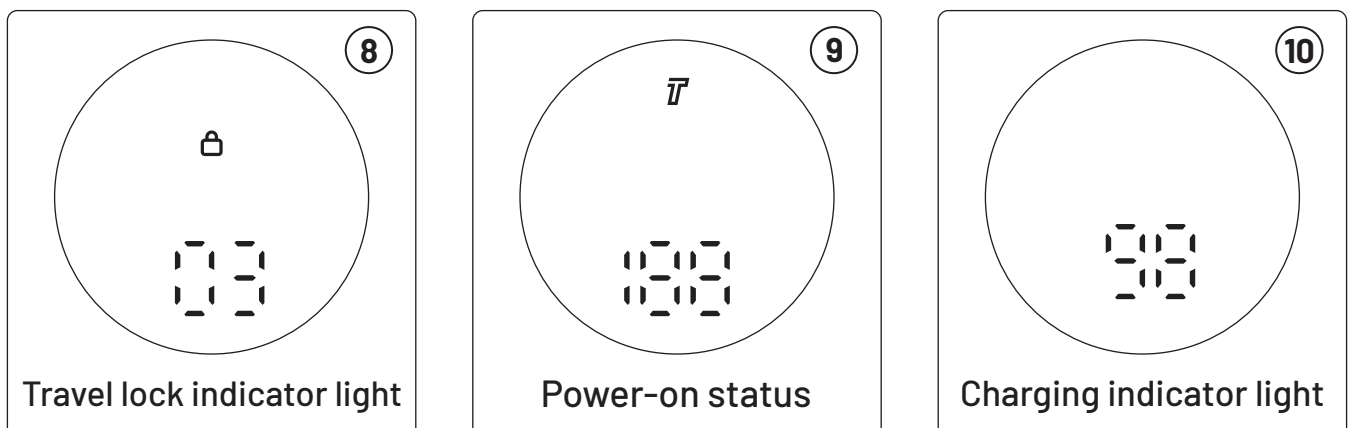
Shaving Instructions

1. Remove the protective cover.
2. Press the switch button to turn on the electric shaver.
3. Move the shaver against the direction of beard growth on your skin, making straight and roundabout movements.

4. Press the switch button again to turn off the shaver.
 5. After each use, cover the shaver with the protective cover to prevent damage to the blade net.
 6. Activating the Lock: Press and hold the switch button for 3 seconds to activate the travel lock. The white light will flash 3 times.
 7. Unlocking: Press and hold the switch button for 3 seconds to deactivate the travel lock. The white light will flash 3 times in a cycle, and the battery indicator will show the real-time power. The speed light will turn on, and the machine will be powered on. The travel lock will be released automatically.
 8. After turning on the machine, press and hold the switch button for 3 seconds to switch between fast and slow speeds. The white light will be constant in fast gear, and the "T" will flash in slow gear.
 9. Once the shaving is complete. Press the switch button again to turn off the electric shaver, and then cover it with the protective cover to prevent damage to the blade net.
- Note:** Do not shave when the blade is damaged, as it may cause skin damage.



Display Description



Travel Lock

1. Lock: Turn off the shaver and press the switch button for 3 seconds. The travel lock white light will flash, and the display will show the number "3" decreasing to "1" (as shown in Figure 8). The travel lock will be activated, and the switch will flash.

2. Unlock: Turn off the shaver and press the switch button for 3 seconds. The travel lock white light will flash, and the display will show the number "3" decreasing to "1" while the speed light is on. The travel lock will be unlocked and turned on, and it will be automatically released while charging.

Battery Display

The current remaining power is displayed when turning the shaver on or when charging. The power display gradually decreases or increases with usage time or charging time. The full power display shows "100"; when the power reaches 10% or less, the display will flash to remind you to charge. When connected to the charger for charging, the digital display will flash in segments, and the full power digital light will remain on.

Speed Display

After turning on the machine, press and hold the power button for 3 seconds to change the speed. The speed can be switched between two gears. The symbol "T" is displayed for fast shaving mode, and the symbol "T" flashes for soft shaving mode. Switch the machine on and off again to remember the last speed setting.

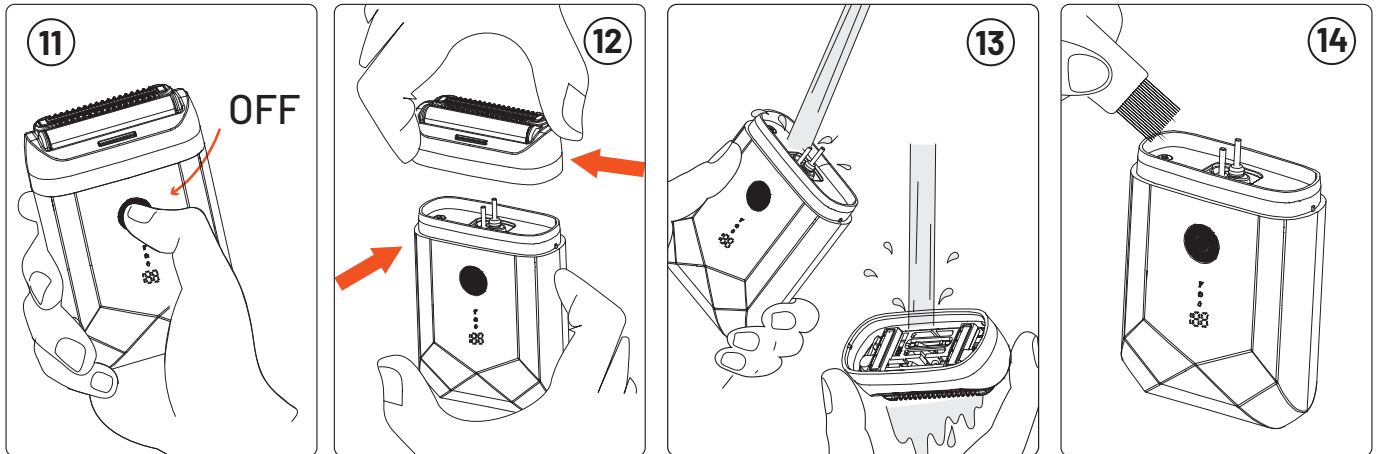
Power-on Display

After turning on the machine, the LED digital tube screen will scroll once, and the digital tube numbers and the speed symbol "T" will be displayed, decreasing from 100% in sequence.

Cleaning Reminder

After the machine is turned on, the cleaning symbol will appear after 30 minutes of cumulative operation. After turning off the machine and turning it on again, the symbol will disappear.

Cleaning Maintenance



1. Water Rinsing and Cleaning

1.1 Before cleaning, ensure the electric shaver is separated from the power adapter and the switch is turned off (Figure 11).

1.2 Press the left and right sides of the blade head, remove it upward, and separate the head cover from the shaver body (Figure 12).

1.3 You can directly rinse the blade net under the faucet (Figure 13). It is recommended to use warm water for rinsing. Do not use water above 60°C for cleaning.

1.4 After rinsing, drain the excess water and allow the shaver to dry naturally.

2. Brush Cleaning: Turn off the machine and remove the blade head cover. Use a brush to clean the hair storage room and the blade head (Figure 14).

3. Storage: It is recommended to dry the electric shaver first, then cover it with a protective cover to prevent damage to the blade net and avoid dust accumulation inside.

4. Replace the Blade Head: For optimal shaving performance, it is recommended to replace the blade head every two years. Be sure to use the original electric

shaver blade net. The blade net can be purchased at online flagship stores or designated dealers.

Troubleshooting

Problem	Possible Cause	Solutions
The shaving effect is poor.	The blade net is damaged or worn.	Please purchase a REEPRO shaver and replace the blade net. Thoroughly clean the blade net of the electric shaver and connect the power adapter to charge.
The power does not work.	The battery power is exhausted.	Please return the product to after-sales service for further assistance.
The LED display is not lit.	There is a failure in the LED display or circuit.	After a 2 to 3 week adaptation period, the symptoms should disappear, and skin allergies should subside.
There is skin irritation after shaving.	Your skin needs time to get used to the razor.	Please return the product to after-sales service and ensure it is charged in an environment with temperatures between 5°C and 35°C.
The device is unable to charge.	The electric shaver or power adapter is damaged.	Send the product to a service center for inspection.
The shaving time is less than 60 minutes after a full charge.	The shaving time depends on your shaving method, cleaning habits, and beard density.	No action required.

Environmental Information

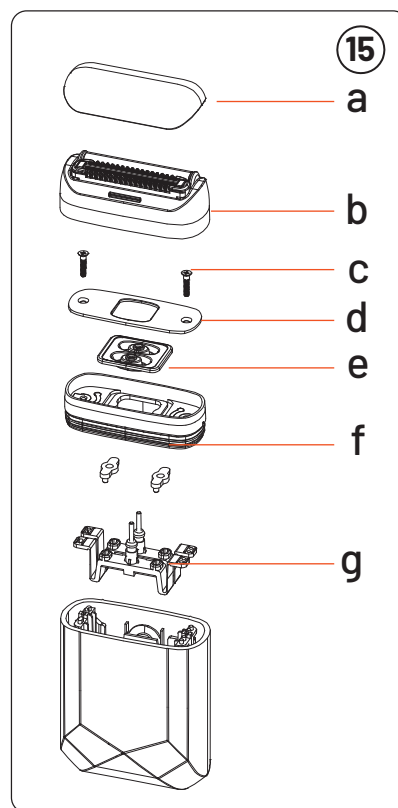
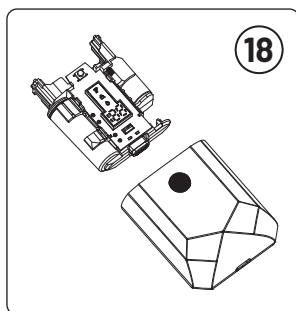
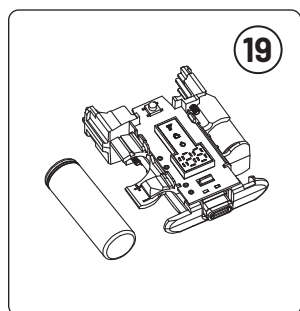
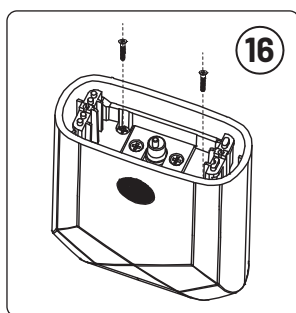
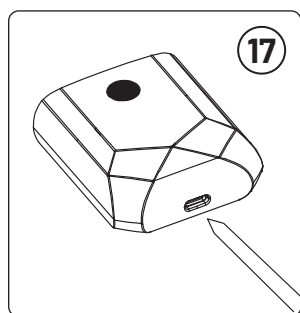
- 1. Environmental Protection:** The built-in rechargeable battery of this product contains substances that may harm the environment. It is crucial to dispose of the battery properly. Before discarding the electric shaver, ensure the battery is removed and sent to an officially designated recycling station. Alternatively, you can send the used electric shaver to the company's authorized maintenance department, where it will be disassembled and recycled, including the battery.
- 2. Removing the Battery:** Disconnect the power supply and allow the electric shaver to run until the battery is fully exhausted. Unscrew all the screws securing the electric shaver, carefully disassemble it, and remove the battery.

Note: The rechargeable battery can only be removed once the electric shaver has been discarded.

Battery Removal Steps:

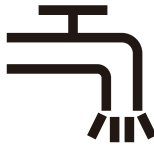
Cut off the power supply and allow the product to run until the battery is drained.

- 1.** Disassemble the product in the order shown from parts a to g (Figure 15).
- 2.** Unscrew the two diagonally opposite screws as shown in Figure 16.
- 3.** Eject the movement as demonstrated in Figure 17.
- 4.** Remove the movement as shown in Figure 18.
- 5.** Extract the battery as shown in Figure 19.



Specifications

Battery Capacity	600mAh
Input	DC 5V/1A
Rated Power	5W
Motor Speed	8000RPM
Working Time	60Min
Charging Time	1.5H
Charging Interface	Type-C
Waterproof Rating	IPX6
Product Size	26.2×58×92.5mm
Model Number	LFS128



Warning: Separate the shaver from the charging cable before washing it in water.



Warranty

Products that you buy directly from our **Porodo** website or shop come with a 24-month warranty.

When you buy **Porodo** products from any of our approved sellers, you only get a 12-month warranty. If you want to extend this warranty, go to our website at **porodo.net/warranty** and fill out the form with your information. Don't forget to upload a picture of the product too. After we've checked and accepted your request, we'll send you an email to confirm that your product's warranty has been extended.

For more info, please check:

porodo.net/warranty

Contact Us

If you have any questions about this Privacy Policy, please contact us at:

info@porodo.net

Website: **porodo.net**

Service Support: **support@porodo.net**

Instagram: **porodo**