

# PORODO



## Porodo

**Wireless Carplay  
Supports Split Screen**

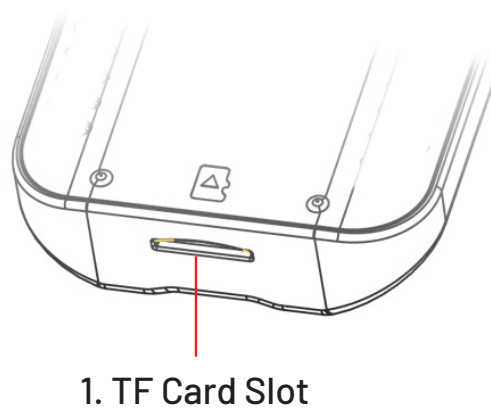
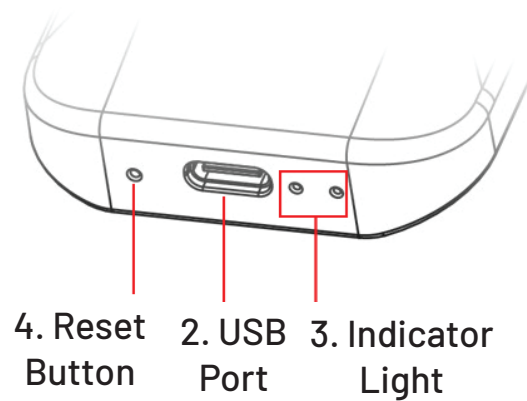
SKU:PD-LFST114

# **Table of Contents**

Schematic View	2
Compatibility Guide	2
Specifications	3
Connection Guide	3
Apple Screen Mirroring	6
Android Screen Mirroring	6
Disposal	7
Warranty	7
Contact Us	7

Thank you for your purchase. Before using the product, please carefully read this User Manual to guarantee correct usage and keep it secure for future reference.

## Schematic View



## Compatibility Guide

**1.** This product is only compatible with vehicles equipped with OEM wired CarPlay or wired Android Auto.

**Attention:** Not all car models with built-in CarPlay or wired Android Auto can be fitted with this adapter.

**2.** Check if there is a CarPlay or Android Auto icon on your car's audio system.

**3.** Use the cable to connect your phone to the car's USB port. If the "Use CarPlay" or "Use Android Auto" pop-up window appears on your phone, it means the car is equipped with an OEM wired CarPlay or wired Android Auto system.

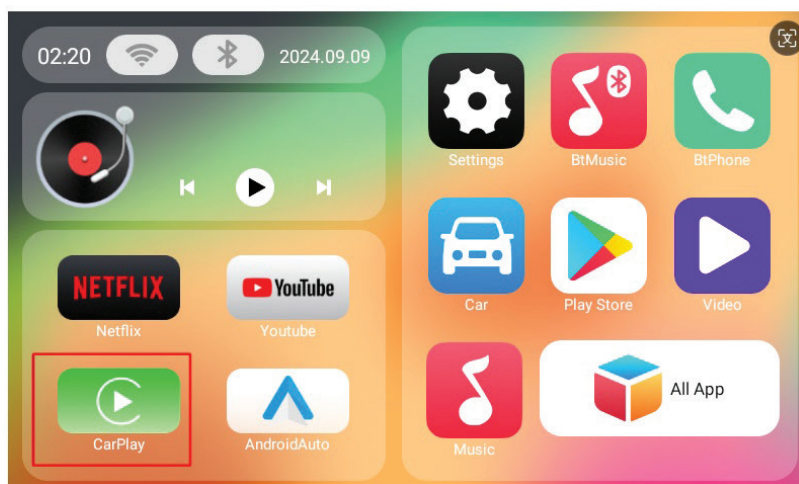
## Specifications

Power	5V/1A
OS	Android 12
CPU	RK3528 QUAD-CORE CORTEX A53 Processor@2.0GHz
DDR	2GB LPDDR3
EMMC	16GB eMMC
SD Card	Up to 128GB (Not Included)
WiFi	2.4GHz/5GHz
Bluetooth	5.0 (External), 5.2 (Built-in)
Devices	iOS 7.1 and Above, Android 10 and Above
USB Interface	Type-C

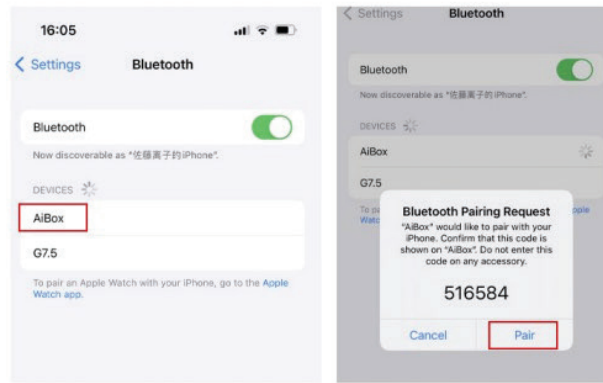
## Connection Guide

### 1. Connect to CarPlay

- Turn on the CarPlay option on the Porodo Wireless Carplay.

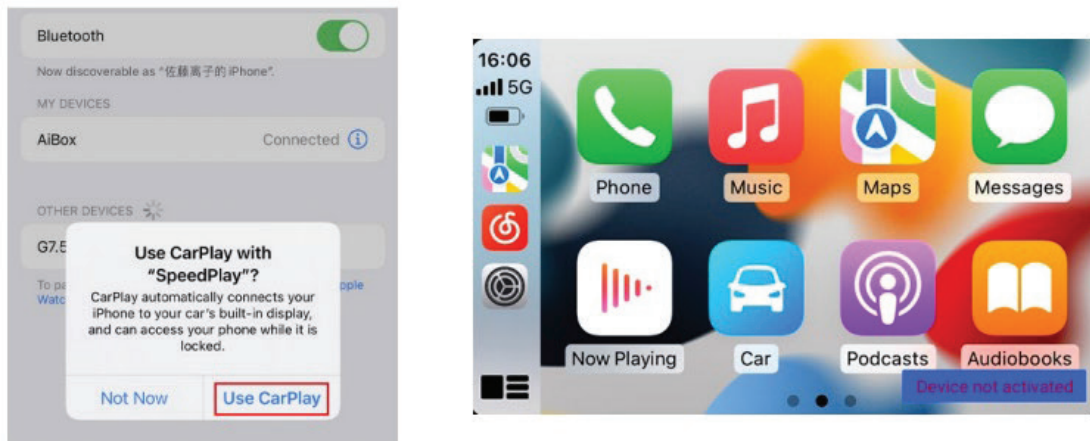


**b.** Enable Bluetooth on your iPhone and search for "AiBOX" to connect.



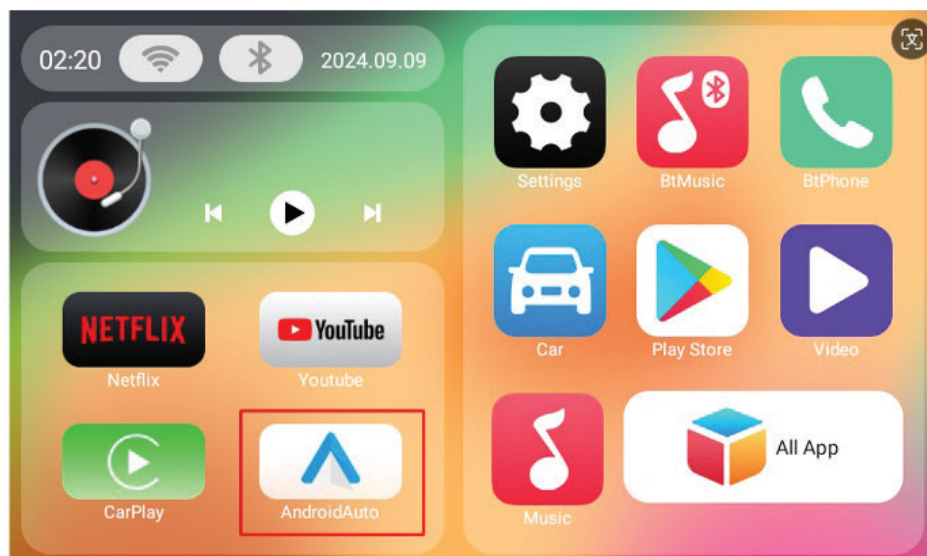
**c.** Agree to use CarPlay.

Once the connection is established, Bluetooth will automatically disconnect, and the phone's Wi-Fi will remain connected to the car's hotspot.

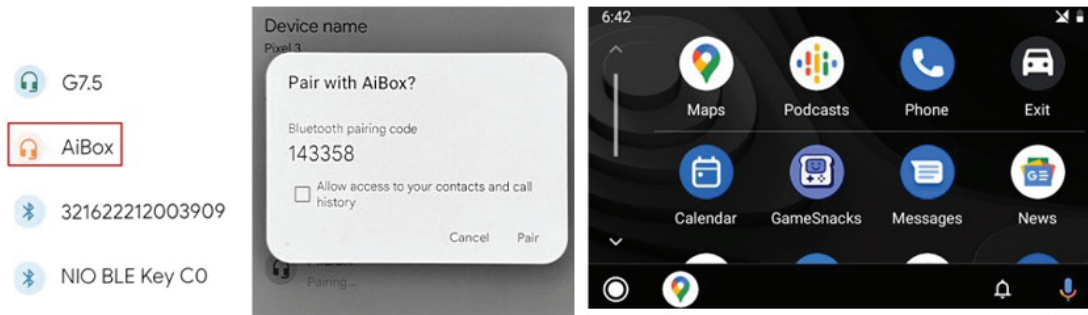


## **2.** Connect to Android Auto

**a.** Turn on the Android Auto option on the Porodo Wireless Carplay.

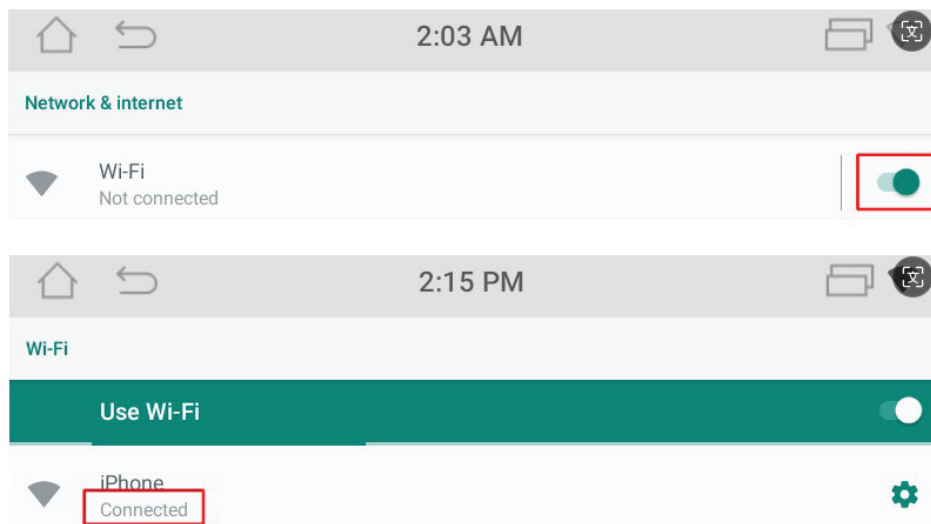


**b.** Enable Bluetooth on your Android phone and search for "AiBox" to connect.

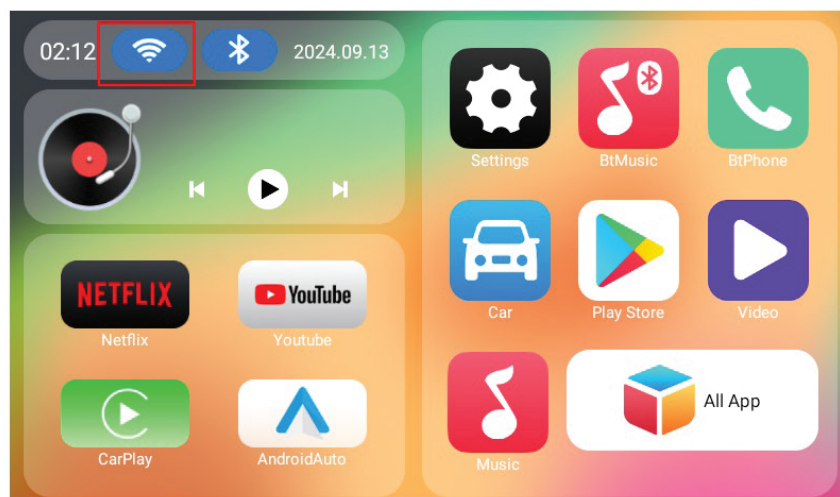


### **3.** Connect to Wi-Fi and Use the App

**a.** Access the Settings option from the home screen of the Wireless Carplay and navigate to the Wi-Fi settings. Connect to an available Wi-Fi network, such as mobile Wi-Fi or a phone hotspot.



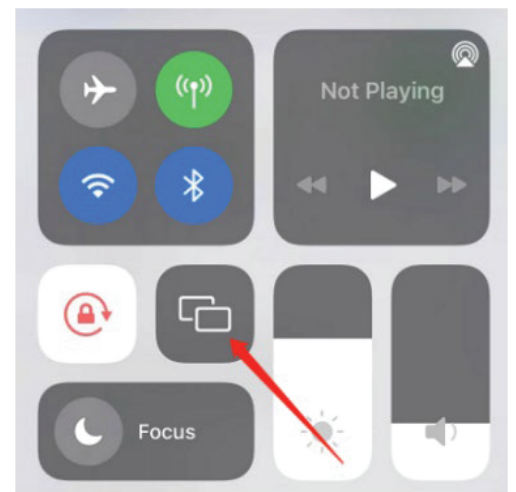
**b.** The Wi-Fi icon in the upper left corner will be highlighted once the connection is successful. You can then begin using the apps.



## Apple Screen Mirroring

- a.** Enable the hotspot on your iPhone.
- b.** Go to the Wi-Fi settings on the Wireless Carplay and connect to your phone's hotspot.
- c.** Open the All App on the Wireless Carplay screen, go to Mirror, and select iOS.
- d.** On your iPhone, access the Control Center by swiping up or down, depending on your device, and find the "Screen Mirroring" or "AirPlay" option.
- e.** Search for the device in the Screen Mirroring section on your iPhone and connect.

- f.** Once the connection is successful, the screen content of your iPhone will be mirrored onto the car's display.



## Android Screen Mirroring

- a.** Enable the hotspot on your phone.
- b.** Go to the Wi-Fi settings on the Wireless Carplay and connect to your phone's hotspot.
- c.** Open the All App on the Wireless Carplay screen, go to Mirror, and select Android.
- d.** On your Android phone, access the Control Center or Settings, (by swiping up or down, depending on your device) and find the "Mirroring" or "Android Cast" option.
- e.** Search for the device in the Screen Mirroring section of your phone and connect.



## Disposal

This product must not be disposed of as unsorted household waste. It is important to separate such waste for proper treatment and recycling, in compliance with local waste management regulations.

## Warranty

Products that you buy directly from our **Porodo** website or shop come with a 24-month warranty.

When you buy **Porodo** products from any of our approved sellers, you only get a 12-month warranty. If you want to extend this warranty, go to our website at **[porodo.net/warranty](https://porodo.net/warranty)** and fill out the form with your information. Don't forget to upload a picture of the product too. After we've checked and accepted your request, we'll send you an email to confirm that your product's warranty has been extended.

For more info, please check:  
**[porodo.net/warranty](https://porodo.net/warranty)**

## Contact Us

If you have any questions about this Privacy Policy, please contact us at:  
**[info@porodo.net](mailto:info@porodo.net)**

Website: **[porodo.net](https://porodo.net)**

Service Support: **[support@porodo.net](mailto:support@porodo.net)**

Instagram: **[porodo](https://www.instagram.com/porodo)**