

**PORODO**  
LIFESTYLE



**Porodo Lifestyle**

**4 Styles Hair Iron**

SKU: PD-LFST109

# Table of Contents

Safety Guidelines	2
Schematic View	3
Operating Modes	4
Specifications	5
Prepare Your Hair	5
Operating Instructions	6
Styling Methods	6
Disposal	7
Warranty	8
Contact Us	8

## Safety Guidelines

- 1.** Before use, ensure the appliance is compatible with your local power supply's voltage.
- 2.** Check the appliance, power cord, and plug for any damage before using. Do not operate if damaged.
- 3.** Handle the appliance carefully to prevent any drops or impacts that could cause damage.
- 4.** Keep the power cord away from the main unit and avoid wrapping it around the appliance.
- 5.** After use, turn off the appliance and unplug it from the outlet immediately.
- 6.** Always supervise the appliance when it is connected to the power source. Never leave it unattended.
- 7.** Do not immerse the appliance in water or operate with wet hands.
- 8.** Store the appliance in a dry area away from high humidity and water sources.
- 9.** Ensure the appliance is stored out of reach of children.
- 10.** Always place the appliance on a stable, heat-resistant surface, and use its stand if available.
- 11.** Allow the appliance to cool completely before storing.
- 12.** Do not use the appliance on wet hair or on the same section of hair repeatedly to avoid damage.
- 13.** Refrain from using the appliance on hair that has been chemically.
- 14.** This appliance is not designed for commercial settings. Avoid its use by large groups to prevent wear and potential hazards.
- 15.** Never use alcohol, benzine, or enamel removers to clean the appliance.
- 16.** If the appliance overheats or displays any abnormalities, turn it off and unplug it immediately.
- 17.** Disassembly and repairs should only be performed by an authorized repair engineer.
- 18.** The appliance is not intended for use by individuals with reduced physical, sensory, or mental capabilities, or those lacking experience and knowledge, unless they have been supervised or instructed by someone responsible for

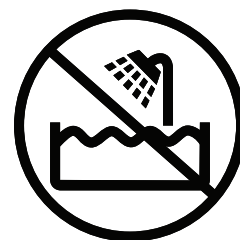
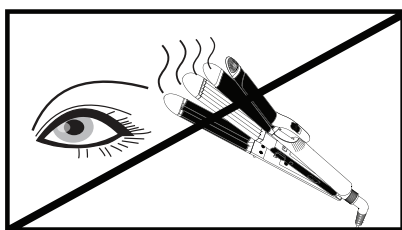
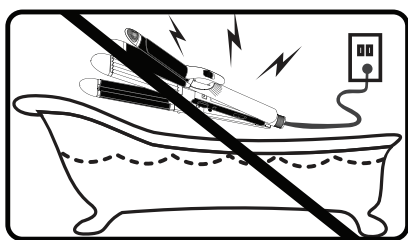
their safety.

**19.** Ensure children are supervised to prevent them from playing with the appliance.

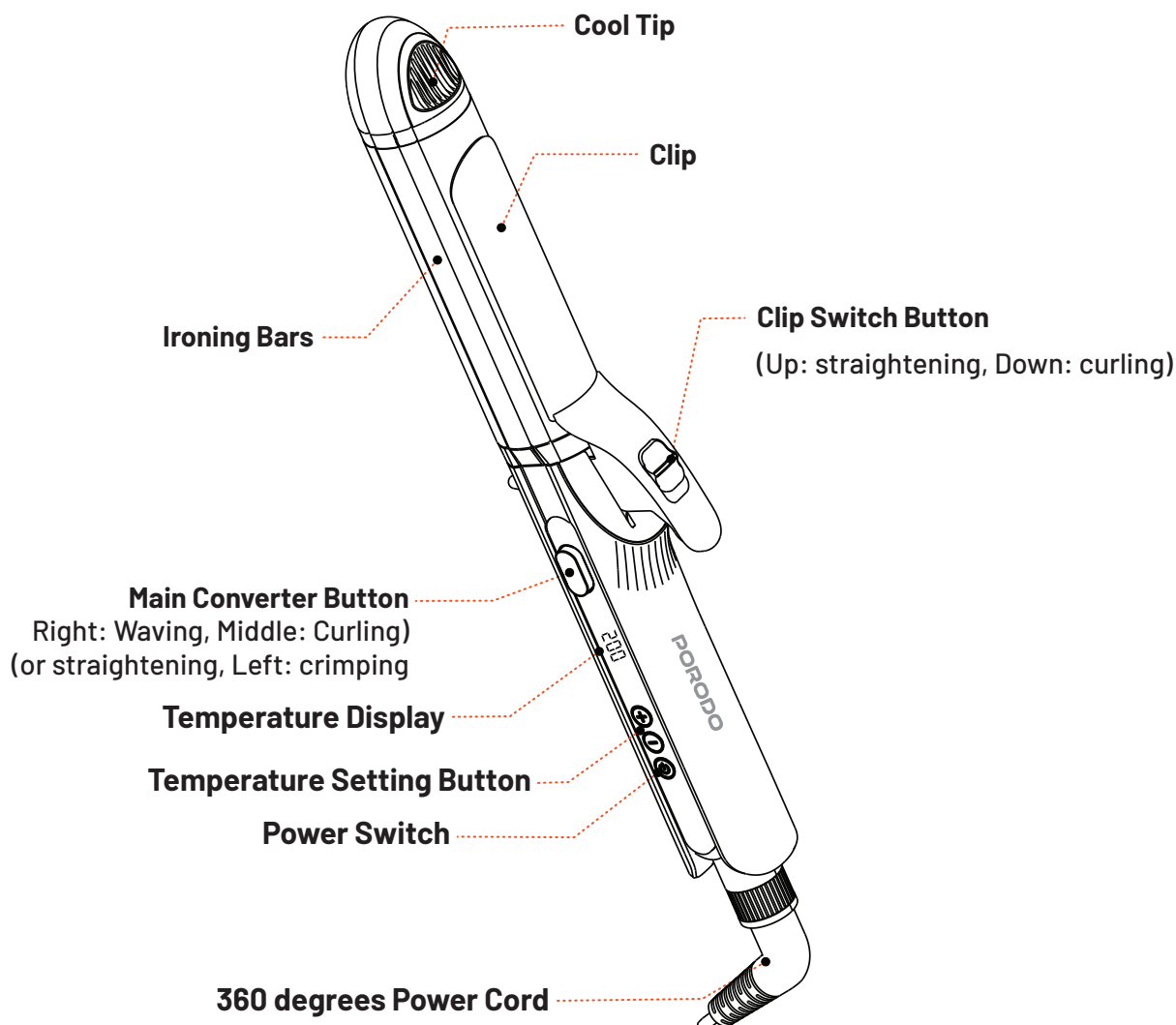
**20.** If the supply cord is damaged, replace it immediately with a part from the manufacturer or through a service agent to avoid any risk.

**21.** Do not use this appliance near bathtubs, showers, basins, or any containers filled with water.

## Warning



## Schematic View

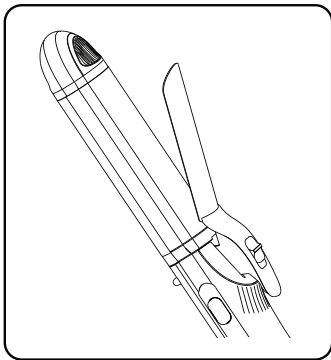


## Operating Modes

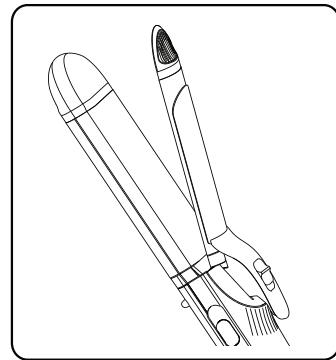
Achieve four distinct looks with one appliance—effortlessly switch between styles.

- 1. Curling Mode:** Perfect for creating classic curls.
- 2. Straightening Mode:** Ideal for achieving sleek, straight hair.
- 3. Crimping Mode:** Adds textured waves for a bold look.
- 4. Waving Mode:** Creates softer, larger waves for a natural finish.

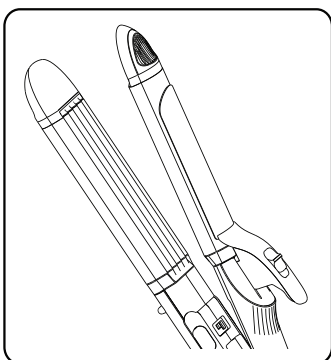
**Note:** For detailed instructions on how to switch between different styling modes, please refer to the "Styling Methods" section.



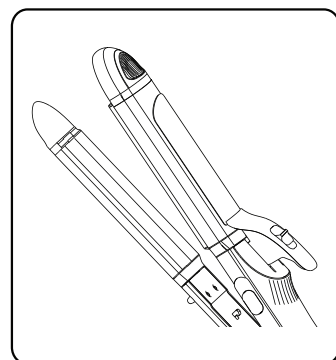
Curling Mode



Straightening Mode



Crimping Mode



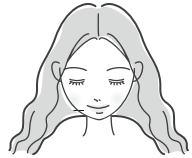
Waving Mode

## Specifications

Material	Iron, Ceramic
Curl Barrel Size	36mm
Rated Voltage	220 to 240V
Rated Frequency	50/60Hz
Rated Power	60W
Power Plug	UK 3-Pin
Heater Type	PTC
Temperature Control	12 Settings (230-120C)
Product Dimension	33×64×335mm

## Prepare Your Hair

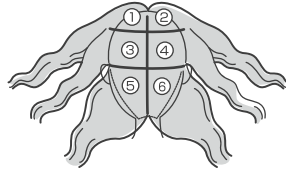
**1.** Begin by parting your hair down the center for symmetrical access and easy segmenting.



**2.** For long hair, twist small sections near the bangs and in front of the ears, securing each with hair clips.



**3.** Organize the remaining hair into three levels as illustrated, starting styling from the lowest section and gradually moving upwards, releasing and styling each segment in turn.



**Safety Tip:** To avoid burns, always use a hairband to keep your hair away from your face, and place a towel or other protective material on your neck and shoulders.



## Operating Instructions

**A. Powering On:** Insert the power plug into the outlet and press the power switch for about 2 seconds to turn on the appliance.

**B. Setting the Temperature:** Press the temperature setting button to choose your desired heat level. Once the appliance reaches the set temperature, the display light will stop flashing, indicating it is ready for use.

**C. After Use:** Press and hold the power switch for about 2 seconds to turn off the appliance. Unplug it from the outlet and allow it to cool completely before performing any maintenance or storing it away.

## Styling Methods

### **A. For Straightening**

**Prepare the Iron:** Slide the main converter button to the middle position and the clip converter button to the front position. Press down on the clip handle to open the straightening iron.

**Section the Hair:** Select a strip of hair approximately 4 cm wide and clamp it in the center of the straightening iron.

**Straighten:** Hold the iron closed at the tip and slowly slide it straight down the hair from root to tip.

### **B. For Curling**

**Prepare the Iron:** Ensure the main converter button is in the middle position and the clip converter button is at the front. Press down on the clip handle to open the curling iron.

**Section the Hair:** Take a strip of hair about 3 cm wide and clamp it in the center of the curling iron.

**Curl:** Slide the iron down to the tip of the hair, then curl the hair around the iron. Hold in place for about 8 seconds. Once curled, open the clip and gently release the hair.

**Important Note:** Do not pull the hair out while the clip is still closed to prevent damage.

### **C. For Waving**

**Prepare the Iron:** Slide the main converter button to the right position and then open the waving iron.

**Section the Hair:** Take a strip of hair approximately 3 to 5 cm wide and clamp it in the center of the waving iron.

**Wave Formation:** Firmly close the iron while holding it at the tip, and press the hair for 5-2 seconds.

**Continue Waving:** Open the iron and re-clamp the hair just below the previously formed wave to continue creating a series of connected waves.

### **D. For Crimping**

**Prepare the Iron:** Move the main converter button to the left position and open the crimping iron.

**Section the Hair:** Select a strip of hair about 3 to 5 cm wide and clamp it in the center of the crimping iron.

**Crimp Formation:** Close the iron tightly while holding it at the tip, and press the hair for 5-2 seconds.

**Continue Crimping:** Open the iron and re-clamp the hair just below the previously formed crimp to continue creating a series of connected crimps.

## **Disposal**

This product must not be disposed of as unsorted household waste. It is important to separate such waste for proper treatment and recycling, in compliance with local waste management regulations.



## **Warranty**

Products that you buy directly from our **Porodo** website or shop come with a 24-month warranty.

When you buy **Porodo** products from any of our approved sellers, you only get a 12-month warranty. If you want to extend this warranty, go to our website at **[porodo.net/warranty](https://porodo.net/warranty)** and fill out the form with your information. Don't forget to upload a picture of the product too. After we've checked and accepted your request, we'll send you an email to confirm that your product's warranty has been extended.

For more info, please check:  
**[porodo.net/warranty](https://porodo.net/warranty)**

## **Contact Us**

If you have any questions about this Privacy Policy, please contact us at:  
**[info@porodo.net](mailto:info@porodo.net)**

Website: **[porodo.net](https://porodo.net)**

Service Support: **[support@porodo.net](mailto:support@porodo.net)**

Instagram: **[porodo](https://www.instagram.com/porodo)**