

PORODO
LIFESTYLE



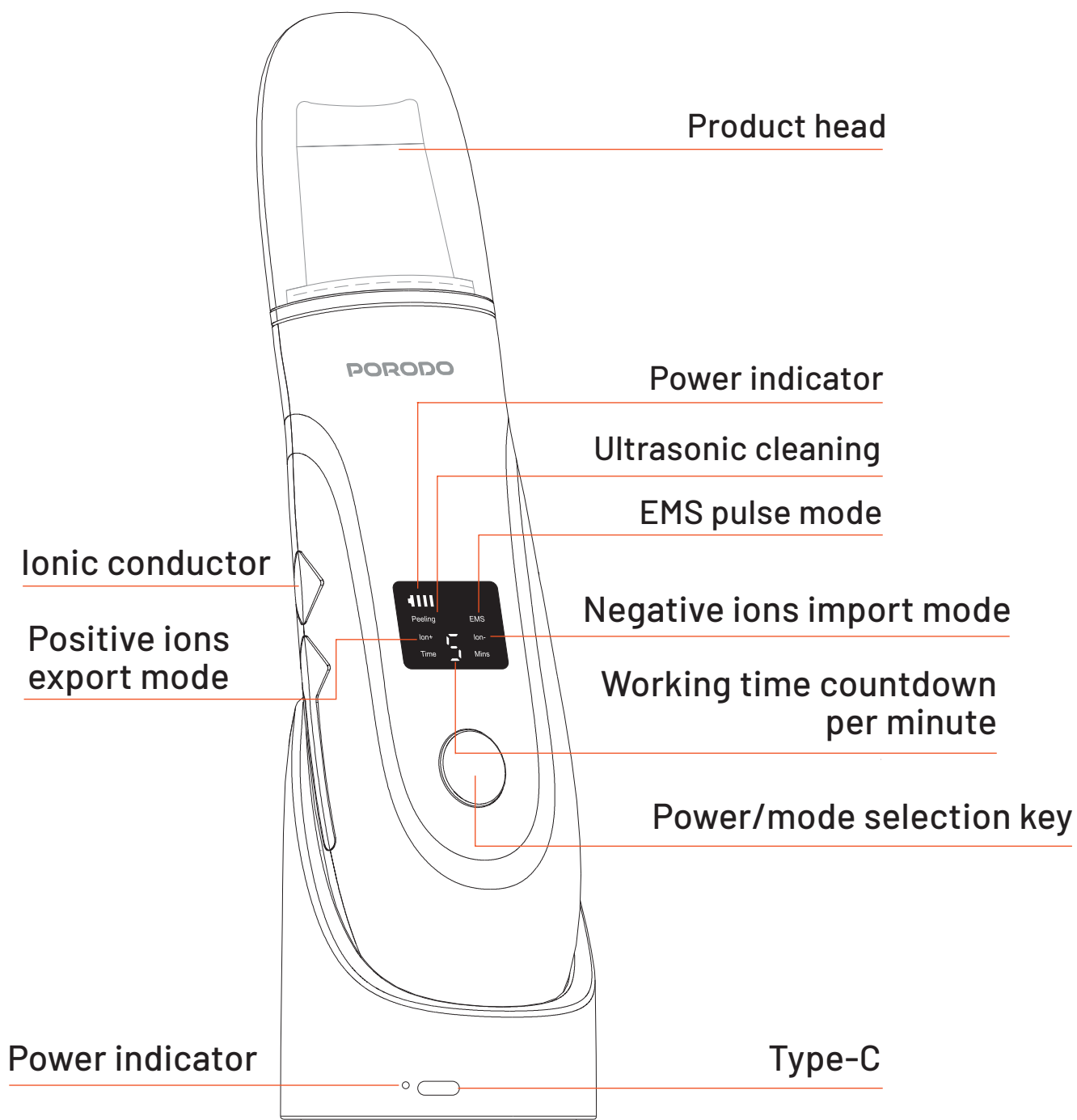
Porodo Lifestyle
Ultrasonic Face Scrub
and Peeler

SKU: PD-LFST101-WH

Table of Contents

Schematic View	2
Overview	2
Product Features	3
Specifications	3
Charging Method	3
Instructions for Use	4
Maintenance and Storage	6
Precautions	6
Disposal	7
Warranty	8
Contact Us	8

Schematic View



Overview

The Porodo Lifestyle Ultrasonic Face Scrub and Peeler features advanced technology to rejuvenate the skin. Its large LED screen displays operational status, battery life, and usage time clearly. The device not only deeply cleanses the skin by removing grease and dirt, but it also helps eliminate blackheads and purify

pores. Additionally, its EMS function enhances nutrient absorption, and tightens the skin, giving it a lifted appearance.

Product Features

- 1. Provides deep cleaning and removes aged skin cells.
- 2. Breaks down pigments and reduces dark spots.
- 3. Smoothens deep wrinkles and enhances skin elasticity.
- 4. Stimulates skin circulation and supports lymphatic metabolism.
- 5. Boosts skin cells' regenerative ability and permeability.
- 6. Massages the skin, delivers nutrition, and clears pores.
- 7. No harm to the skin, with no side effects.
- 8. Attractive design, easy to use, simple to operate, and portable.

Specifications

Battery Capacity	600mAh
Rated Power	1.5W
Working Voltage	3.7V
Charging Voltage	5V
Charging Interface	Type-C
Charging Time	150Min
Product Size	Scrubber Size 18×49×172mm, Base Size 70×44.5×54mm
Product Weight	Scrubber Weight 86g, Base Weight 26g

Charging Method

Note: When the battery indicator shows fewer than 2 bars, it is recommended to charge the device.

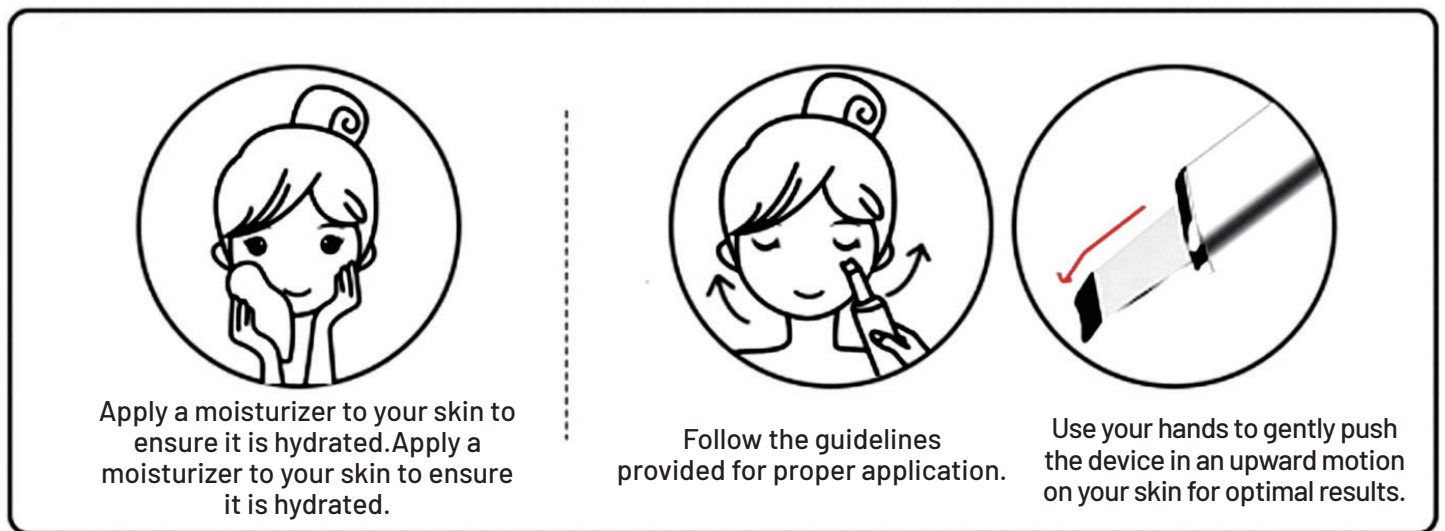
- 1. Connect the USB charging cable to the USB interface.

2. To charge, plug the device into a computer, USB adapter, or a USB interface of a power bank. During the charging process, the power icon on the display screen will flash.
3. Once the battery is fully charged, the screen will show a solid 4-bar indicator.

Instructions for Use

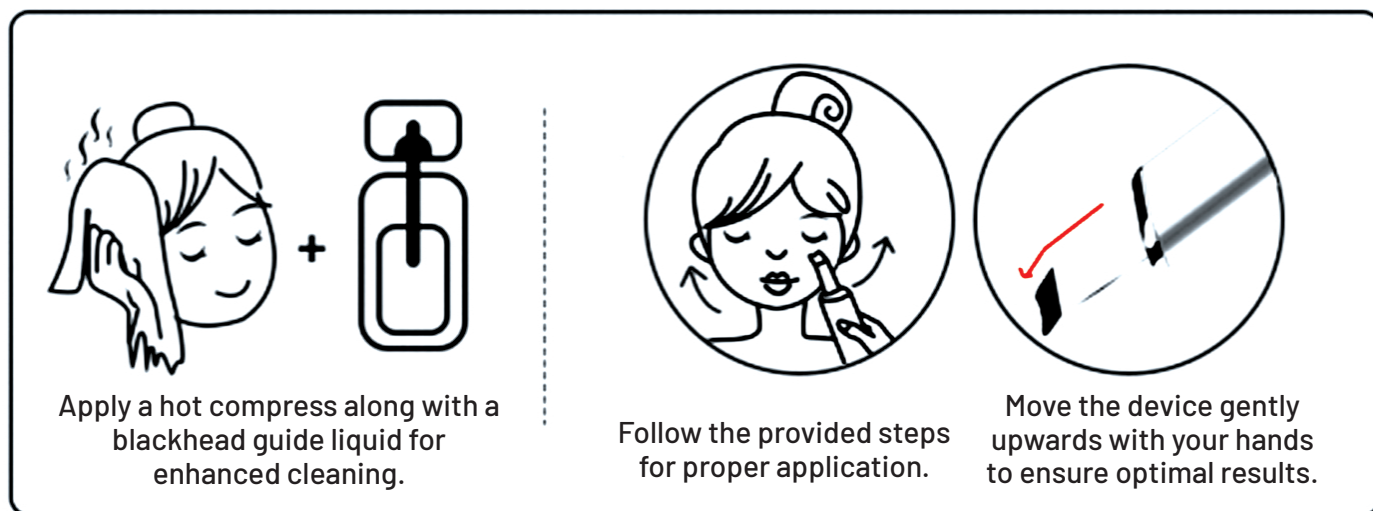
Step 1: Clean with Ultrasonic Cleaning Mode

Press and hold the power button for 3 seconds to turn on the device and activate the ultrasonic cleaning mode. The (Peeling) icon on the screen will light up steadily indicating that the device is ready for use.



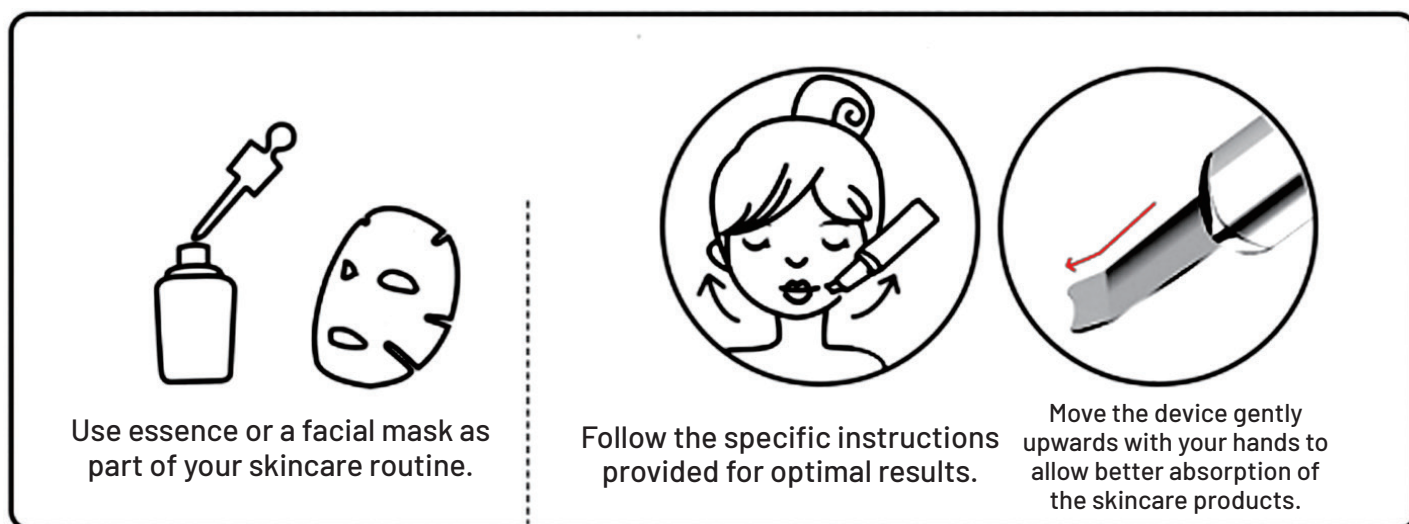
Step 2: Deep Cleaning with Ultrasonic Cleaning Mode

1. Press and hold the power button for 3 seconds to activate the positive ion export mode. Once the power is on, the display screen will show the (Ion+) icon which will light up. Use a hot compress and blackhead guide liquid, then hold the conductive strip in hand.
2. Position the shovel head at a 45° angle to the skin. Gently move the shovel head along the contours of your skin, carefully removing any residue from the surface.



Step 3: Nutrition Introduction (Negative Iontophoresis Mode)

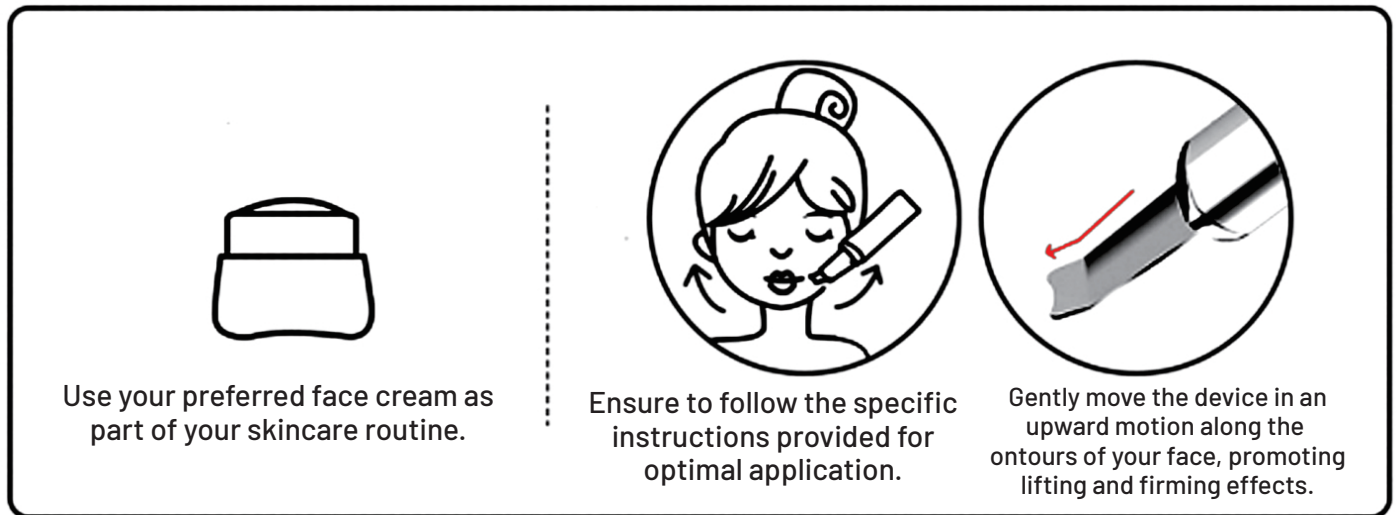
1. Press and hold the power button for 3 seconds to activate the negative ion introduction mode. After the device powers on, press the button twice to switch modes. The display screen will show the (**Ion-**) icon, which will light up.
2. Apply toner and position the back of the shovel head close to your skin. Move the shovel head slowly along the contours of your face, allowing the skin care products to penetrate the skin for better absorption and nourishment.



Step 4: Soothing Massage (EMS Pulse Mode)

1. Press and hold the power button for 3 seconds to switch to EMS pulse mode. After the device powers on, press the button three more times to activate this mode. The display screen will show the (**EMS**) icon, which will light up.
2. Apply face cream and position the back of the shovel head close to your skin. Move the shovel head slowly along the contours of your face, improving the

absorption of skin care products while tightening and lifting the skin.



Maintenance and Storage

1. Ensure the device is turned off before cleaning.
2. Wipe stains from both the head and the main unit with wet wipes or alcohol. Do not use diluents, solvents, or any other corrosive chemicals to clean the product.
3. After cleaning, store the device in a dry place for safekeeping. Avoid placing it in wet areas such as bathrooms or places accessible to children.

Precautions

1. Do not use near the temples, eyes, Adam's apple, or on any wounds.
2. Move the device side to side and avoid staying in the same place for too long to prevent skin irritation or burns.
3. This device is not recommended for children, pregnant women, individuals with hearing loss, those with heart rate regulators or mental disorders. Avoid using the device if you've had facial plastic surgery or any embedded surgical procedures.
4. The device may emit a slight squeaking noise during use due to its frequency. This is normal and should not affect usage.
5. If the body of the device overheats during charging, immediately cut off the power.

- 6.** If the shovel-type beauty device overheats, stop using it immediately.
- 7.** It takes about 150 minutes to fully charge the battery (ensure the first charge is more than 5 hours).
- 8.** The device can be used for up to 60 minutes after a full charge. Regular charging is recommended.
- 9.** The ideal usage time is 10–5 minutes per session. For best results, use 2 to 3 minutes per week, up to 8 to 12 times a month.
- 10.** Keep your hands dry while using the device to avoid experiencing a micro-current sensation. This is a normal occurrence and does not affect usage.

Disposal

This product must not be disposed of as unsorted household waste. It is important to separate such waste for proper treatment and recycling, in compliance with local waste management regulations.



Warranty

Products that you buy directly from our **Porodo** website or shop come with a 24-month warranty.

When you buy **Porodo** products from any of our approved sellers, you only get a 12-month warranty. If you want to extend this warranty, go to our website at **porodo.net/warranty** and fill out the form with your information. Don't forget to upload a picture of the product too. After we've checked and accepted your request, we'll send you an email to confirm that your product's warranty has been extended.

For more info, please check:
porodo.net/warranty

Contact Us

If you have any questions about this Privacy Policy, please contact us at:
info@porodo.net

Website: **porodo.net**

Service Support: **support@porodo.net**

Instagram: **[porodo](https://www.instagram.com/porodo)**