

PORODO
LIFESTYLE



Porodo Lifestyle

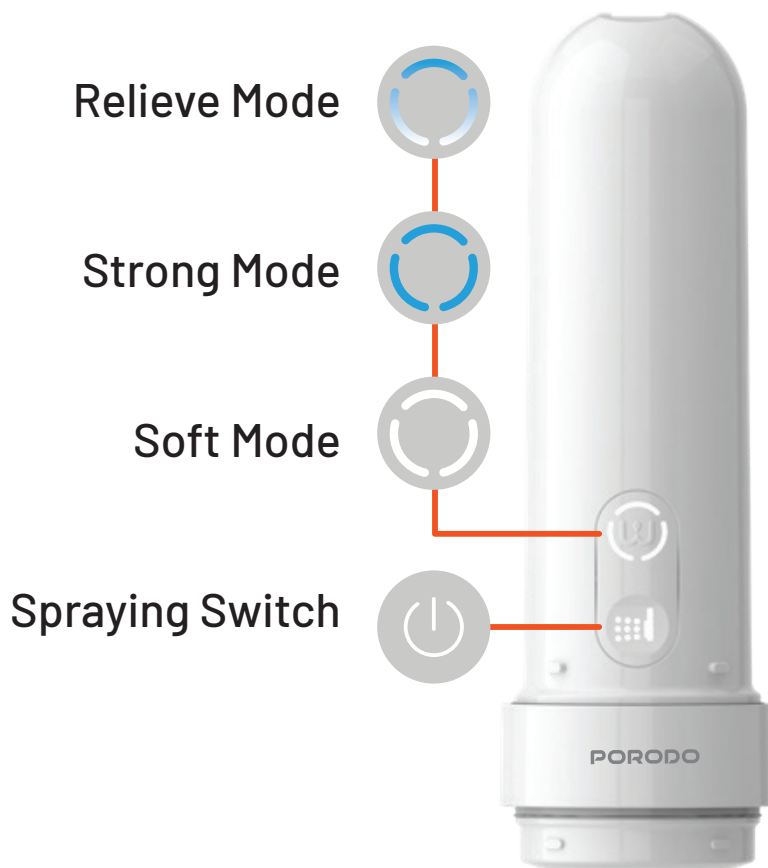
Electric Travel Bidet

SKU: PD-LFST088

Table of Contents

Operating Modes	2
Instructions for Use	3
Product Overview	4
Specifications	5
Cautions	5
Important	5
Disposal	6
Warranty	6
Contact Us	6

Operating Modes



Clean as needed, anytime, anywhere. Choose between Strong and Soft Modes or use Relieve Mode when necessary.



Automatically shuts down after 1 minute of inactivity.



Rated IPX6 for easy cleaning and maintenance.

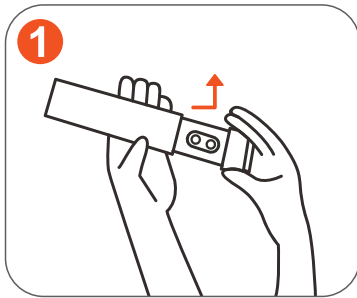


Remembers your preferences for the next time you use the device.



Waterpipe Port with 180° Adjustment: Ensures thorough cleaning from all angles.

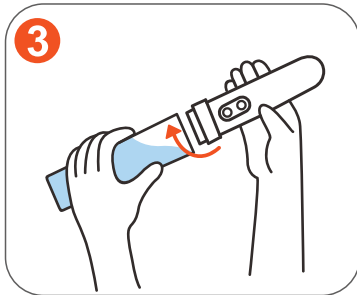
Instructions for Use



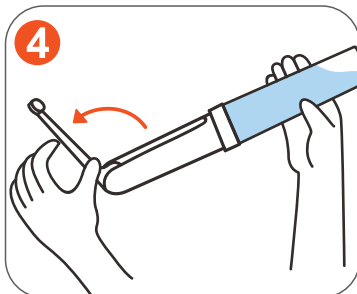
Turn and detach the bidet body from the water reservoir.



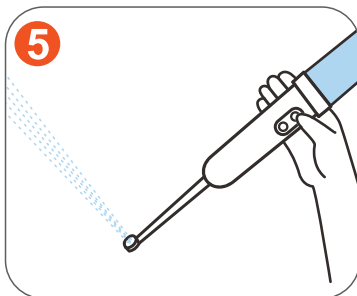
Fill the reservoir with clean water (maximum 180 mL).



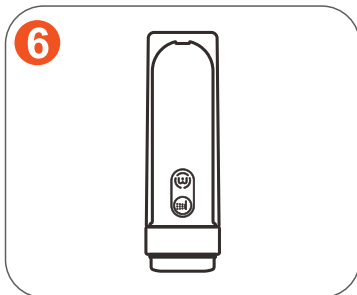
Attach the bidet body securely to the water reservoir.



Open the water pipe properly.

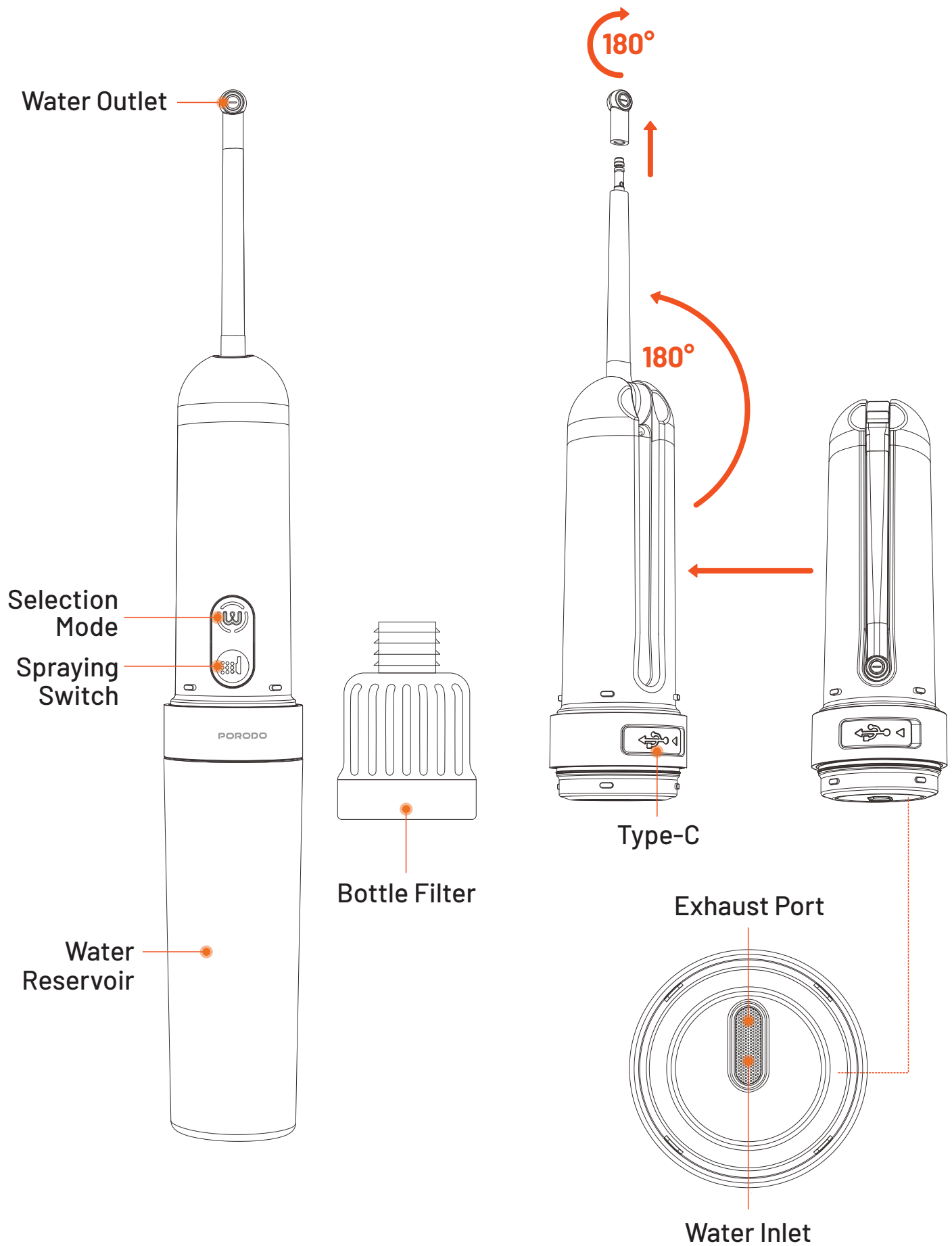


Press the power button and select between Strong Soft, or Relieve mode.



Clean the bidet body after use for maintenance.

Product Overview



Specifications

Bottle Volume	180ml
Displacement of Strong Mode	280ml/min
Run Time at High Mode	≥ 100 Times
Displacement of Soft Mode	230ml/min
Run Time at Low Mode	≥ 130 Times
Displacement of Relieve Mode	220ml/min
Run Time at Relieve Mode	≥ 150 Times
Fully Charge Time	Approx. 2 Hours
Power Source	3.7V, 800mAh Lithium Battery

Cautions

1. This bidet is intended for external use only.
2. Avoid filling with water above 40°C.
3. Clean the bidet body, reservoir, and water pipe regularly to prevent harmful bacteria buildup.
4. For optimal cleaning, use the bidet spray in a circular motion.
5. Prevent the device from falling, knocking, or experiencing forced vibrations.
6. Do not detach or modify any internal parts.
7. This product does not function while charging.
8. This product is not a toy and contains small parts that are unsuitable for children under 5 years of age.

Important

1. Be sure to clean and dry the water reservoir after use.
2. Ensure that no water is left inside the water pipe.

3. It is recommended to let the device run for a few extra seconds after removing the water reservoir.

Disposal

This product must not be disposed of as unsorted household waste. It is important to separate such waste for proper treatment and recycling, in compliance with local waste management regulations.

Warranty

Products that you buy directly from our **Porodo** website or shop come with a 24-month warranty.

When you buy **Porodo** products from any of our approved sellers, you only get a 12-month warranty. If you want to extend this warranty, go to our website at **porodo.net/warranty** and fill out the form with your information. Don't forget to upload a picture of the product too. After we've checked and accepted your request, we'll send you an email to confirm that your product's warranty has been extended.

For more info, please check:
porodo.net/warranty

Contact Us

If you have any questions about this Privacy Policy, please contact us at:
info@porodo.net

Website: **porodo.net**

Service Support: **support@porodo.net**

Instagram: **[porodo](https://www.instagram.com/porodo)**