

PORODO



Porodo **Face Tracking** **Smart Mount**

SKU: PD-HSM13

Table of Contents

Product Overview	2
Features	2
Face Tracking Instructions	3
Indicator Guide	3
Installing on a Tripod	4
Camera Manual Adjustment	5
Remote Control Instructions	5
Remote Control Connection	6
Troubleshooting	7
Specifications	8
Set the Volume Button as Shutter	8
Disposal	9
Warranty	10
Contact Us	10

Product Overview

1. Phone Clip
2. Power Button
3. Adjustable Camera Holder
4. Detachable Bluetooth Remote Control
5. Base 4/1" Interface
6. Standard 4/1" Interface
7. Type-C Charging Port
8. Handle



Features

1. The phone clip and base are capable of rotating 360 degrees.
2. The length of the mount can be adjusted for extension.
3. A remote control is provided, which can be securely attached to the mount or detached for remote operation of the device.



OK gesture: Hold for 1 second to activate tracking.



Palm gesture: Hold for 3 seconds to stop tracking.

Face Tracking Instructions

1. Press and hold the power button for 3 seconds to turn the device on/off. The device will enter follow mode upon startup. Click the pause/start button to activate follow mode.
2. Adjust the camera lens to face the subject and detect the face. The green light will remain on, indicating that the device is in follow mode.
3. Gesture Function:
 - 3.1 Palm gesture: Hold for 3 seconds to stop following.
 - 3.2 OK gesture: Hold for 1 second to resume following.
 - 3.3 Palm button: Press to turn off or restart the gesture function. After disabling the gesture function, neither the palm nor OK gesture will be effective.
4. Single-player Mode: After the gesture indicator light flashes, the device will only follow the primary camera. Other cameras will only flash their lights and will not follow. To unlock the single-player mode, perform the OK gesture or press the power button to enter multiplayer mode. Recognition can be adjusted by moving the subject forward or backward.
5. When the indicator light is green, press the button to turn left slowly, and double-click to turn right slowly. When the indicator light is red, click to turn left quickly, double-click to turn right quickly, and click again to stop.
6. If no face is detected, the device will automatically shut down after 15 minutes. When the battery is low, the red light will flash, and the device will automatically shut down after one minute.

Indicator Guide

Green Indicator Light

1. The green indicator light flashes upon startup when the face is not detected.
2. It remains illuminated when the device recognizes the facial tracking mode or 360° rotation mode.



Blue Indicator Light

1. The blue indicator light flashes upon startup when the face is not detected.
2. It remains illuminated when the device is in facial tracking mode or 360° rotation mode.

Yellow Indicator Light

1. The yellow indicator light flashes when another person has passed by or when something is obstructing the camera.
2. It remains illuminated when the device is set to track a single person.



The main device requires approximately 3.5 hours to fully charge.

Red Indicator Light

1. Low power warning (power <10%): The red light blinks rapidly.
2. The red light remains on when charging (Note: Different indicator light colors do not affect the charging process) or when the device is paused.
3. Fully charged: The indicator light is off.

Installing on a Tripod



Rotate the base counterclockwise to remove it.



Remove the tripod and align it with the 1/4" screw hole at the bottom of the product. Ensure the 1/4" standard interface is aligned with the screw hole.

Note: The tripod needs to be purchased separately.

Camera Manual Adjustment

1. Position yourself facing the AI sensor and use gestures.
2. The optimal gesture recognition distance is between 0.5 to 1.5 meters.
3. The best tracking distance is between 0.5 to 3 meters.

Note: No Bluetooth connection is required to activate tracking, and there is no need to download an app.

4. The device can track gameplay, photos, videos, live broadcasts, video calls and more.



Remote Control Instructions

📷 **Photograph:** Turn on Bluetooth on your phone and click on the product's Bluetooth name "PD-HSM13" to connect.

✋ **Turn off Gesture Function.**

⏪ **Slow Left Turn:** Click to stop rotation and enter follow mode.

Long press to turn left slowly, release to stop turning. The red indicator light will turn on.

⏩ **Slow Right Turn:** Click to stop rotation and enable follow mode.

Long press to turn right slowly, release to stop turning. The red indicator light will turn on.

⏪⏪ **Quick Left Turn:** Click to stop rotation and enable follow mode.

Long press to quickly rotate left, release to stop turning. The red indicator light will turn on.

⏩⏩ **Quick Right Turn:** Click to stop rotation and enable follow mode.

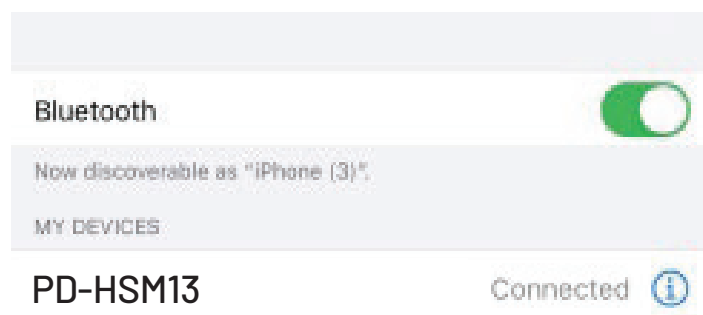
Long press to quickly rotate right, release to stop turning. The red indicator light will turn on.



1. Single Player Mode: Double-click the power button. The indicator light will flash and follow only the person closest to the camera. When others pass by the indicator light will only flash and will not enter follow mode. Double-clicking or using the OK gesture will switch to multiplayer mode.
2. Click to stop rotation. Click again to enter follow mode (green indicator light will turn on).
3. Long press for 3 seconds to turn the remote control on/off (Note: This will not turn off the main device).

Remote Control Connection

Connect to Bluetooth: Long press the power button to turn the device on. The LED light will flash blue, indicating the device is powered on. Then, enable Bluetooth on your phone and search for the device named "PD-HSM13", and click to complete the pairing. Once connected, the connection is complete.



Remarks: Android devices can be connected. For iPhone, first enable the auxiliary touch function by navigating to the operation mode settings: Operation Mode Setting > Auxiliary Function > Touch > Select Auxiliary Touch > Enable. A touch dot will appear to indicate the auxiliary touch function is active.

Troubleshooting

A. Remote Control Not Connected to Phone

- 1.** Turn on Bluetooth on your phone and remove previously paired devices.
- 2.** Restart the phone.
- 3.** Restart the Bluetooth on the remote control.
- 4.** Restart the phone's Bluetooth and try connecting again.
- 5.** Turn on Bluetooth on your phone, power on the remote control, and search for "PD-HSM13" in the phone's Bluetooth options. When the screen displays "Connecting /Pairing," quickly press the control button to establish the connection.
- 6.** The connection only needs to be activated the first time; after that, it will automatically reconnect for regular use.

B. Solutions for Issues with Android Phones Regarding Remote Control Volume /Focusing Distance/Unresponsiveness

- 1.** Open the camera interface on your phone.
- 2.** Swipe left or find the camera settings.
- 3.** Press the volume button.
- 4.** Set the volume function to the shortcut key. Do not choose zoom or focus.
- 5.** The camera settings may vary across different phone models, so please check them accordingly.

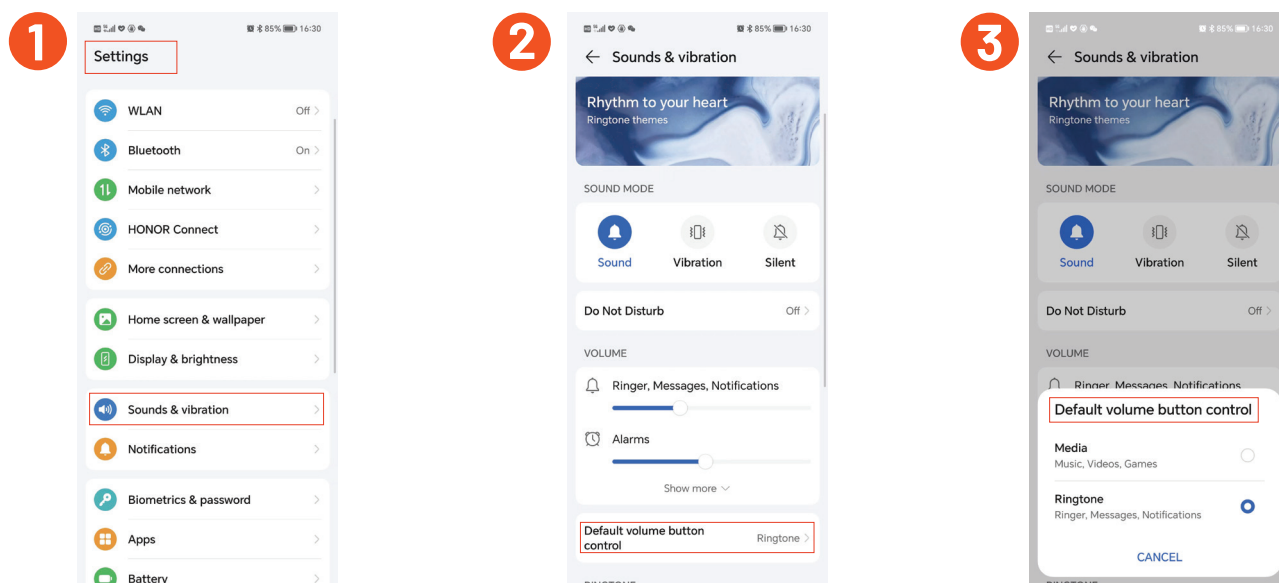


Specifications

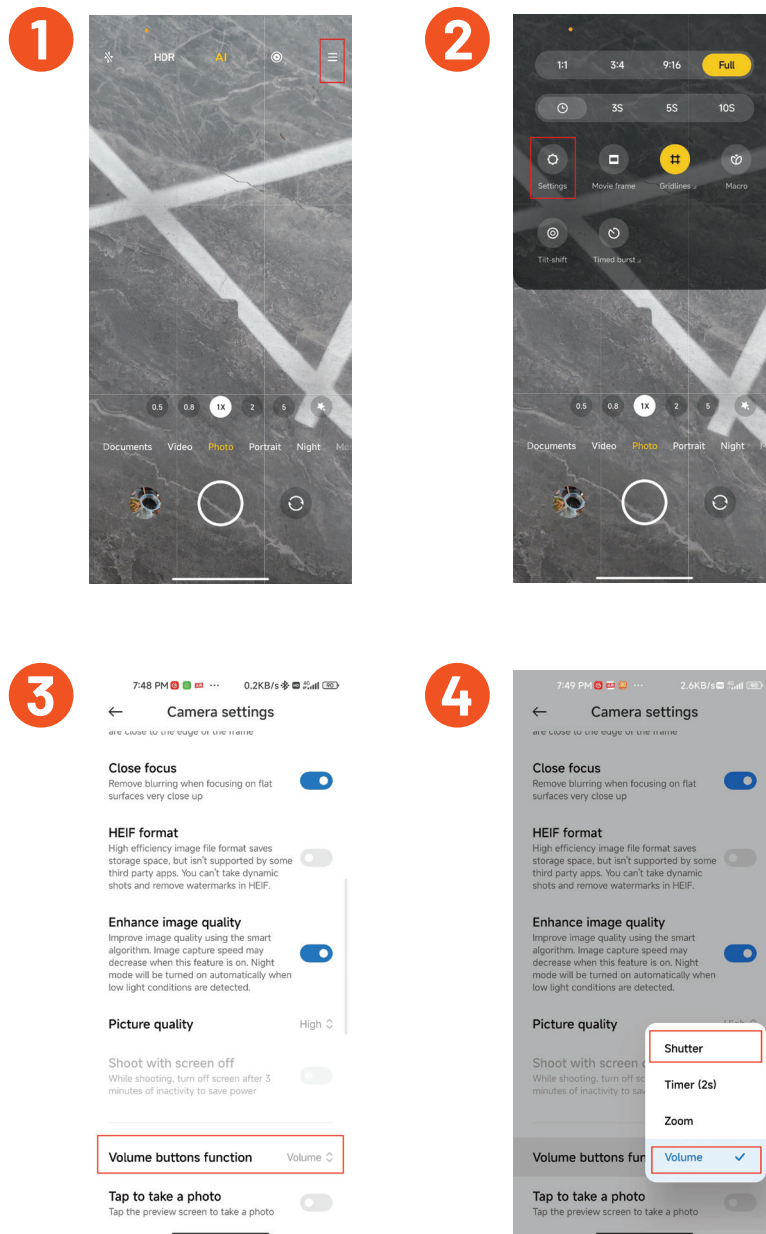
Input	5V/1A
Charging Port	Type-C
Battery Capacity	3.7V 1800mAh
Working Time	5H (Normal Tracking), 2H (Continuous Rotation)
Recharge Time	3.5H (Smart Mount), 1H Remote Control
Product Net Weight	280g
Product Size	100×87×132mm
Remote Control Battery	150mAh
Host Charging Power	4.3W
Fill Light Battery	401020 Polymer
Fill Light Capacity	55mAh
Fill Light Power	Single 0.5W
Supported Phone Width	9cm

Set the Volume Button as Shutter

A. Harmony OS



B. Android OS



Disposal

This product must not be disposed of as unsorted household waste. It is important to separate such waste for proper treatment and recycling, in compliance with local waste management regulations.

Warranty

Products that you buy directly from our **Porodo** website or shop come with a 24-month warranty.

When you buy **Porodo** products from any of our approved sellers, you only get a 12-month warranty. If you want to extend this warranty, go to our website at **porodo.net/warranty** and fill out the form with your information. Don't forget to upload a picture of the product too. After we've checked and accepted your request, we'll send you an email to confirm that your product's warranty has been extended.

For more info, please check:
porodo.net/warranty

Contact Us

If you have any questions about this Privacy Policy, please contact us at:
info@porodo.net

Website: **porodo.net**

Service Support: **support@porodo.net**

Instagram: **porodo**