

**PORODO**



**Porodo**

**Quad-Base Camera Shutter  
Selfie**

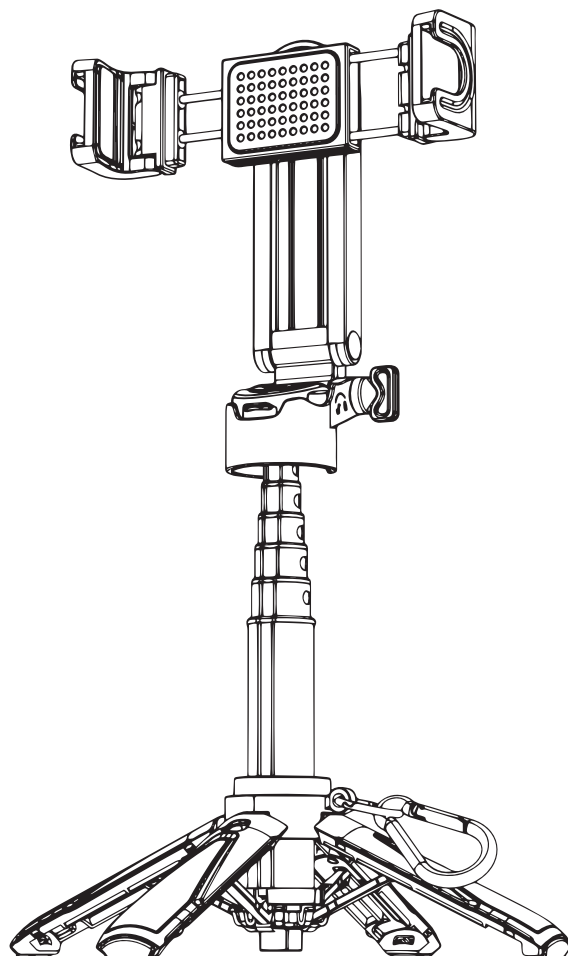
SKU: PD-HSM12

# Table of Contents

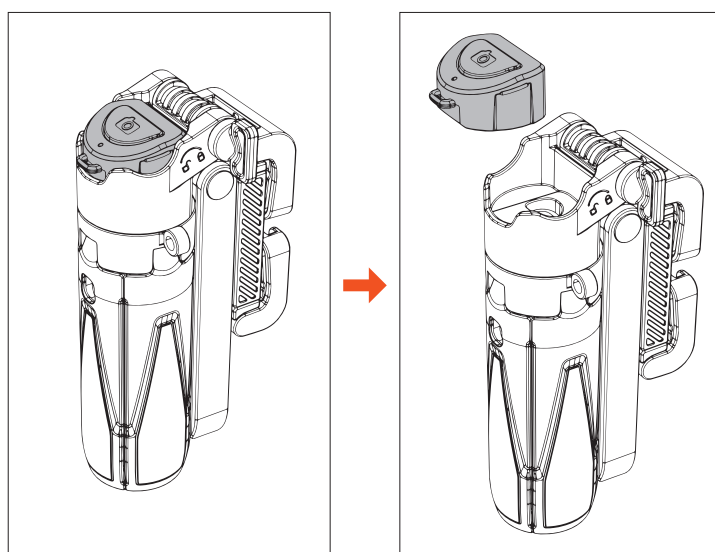
Compatibility	2
Remote Control Instructions	2
Instructions for Use	3
Function Description	4
Specifications	5
Troubleshooting	6
Set Volume Button as Shutter	6
Disposal	7
Warranty	8
Contact Us	8

## Compatibility

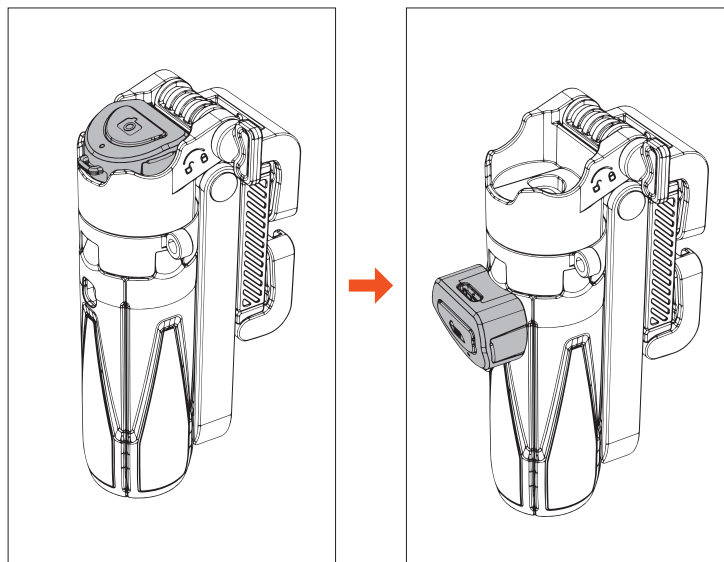
This product is compatible with both Android and iOS systems.



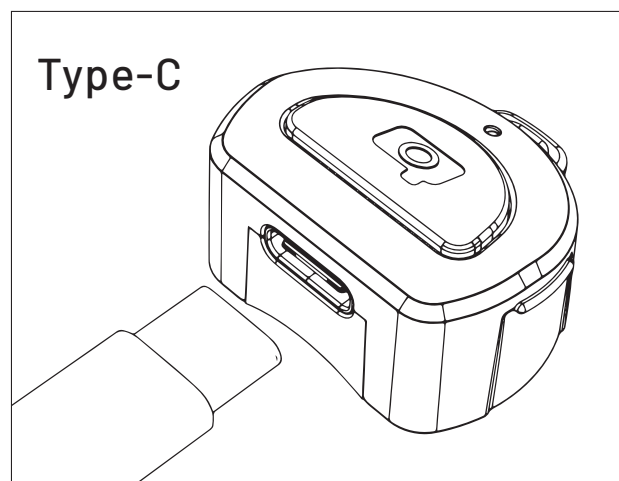
## Remote Control Instructions



The remote control can be easily removed from the device.



After removing the remote control, it can be installed onto the handle of the device for convenient access.



## Instructions for Use

- 1.** Startup: Press and hold the camera button for 3 seconds to power on the device, and the indicator light will flash to indicate that the search state has been entered.
- 2.** Bluetooth Connection: Open the Bluetooth settings on your mobile phone search for "PD-HSM12" and select it to establish a connection. Once the connect on is successful, the indicator light will turn off.
- 3.** Photographing: When the remote control is connected to the mobile phone press the photograph button. The indicator light will flash, and the photo will be taken.
- 4.** Shutdown without Connection: If the remote control is in a disconnected

state with no operation, it will automatically shut down after approximately 5 minutes.

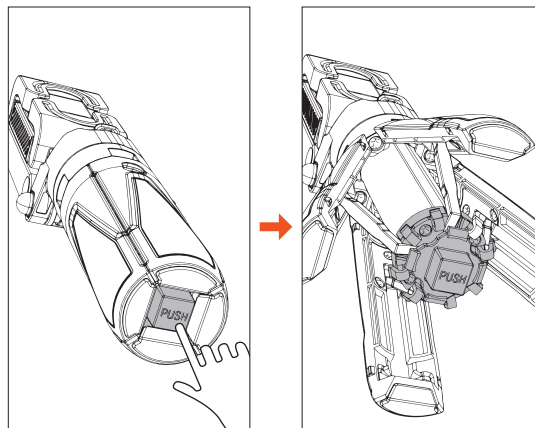
**5. Connected Shutdown:** When the remote control is connected to the mobile phone, it will enter sleep mode after about 10 minutes of inactivity, and will then automatically shut down after another 10 minutes without operation.

**6. Sleep:** After entering sleep mode, press the photo button to reconnect the mobile phone.

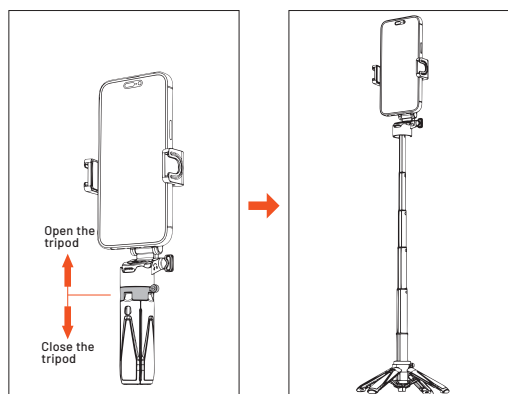
**7. Shutdown:** In both powered-on and sleep states, press and hold the photo button for 3 seconds to turn off the device and shut it down.

**8. Back Connection Function:** The remote control has a memory connection function. When the mobile phone Bluetooth is turned on, the remote control will automatically reconnect to the previously paired mobile phone.

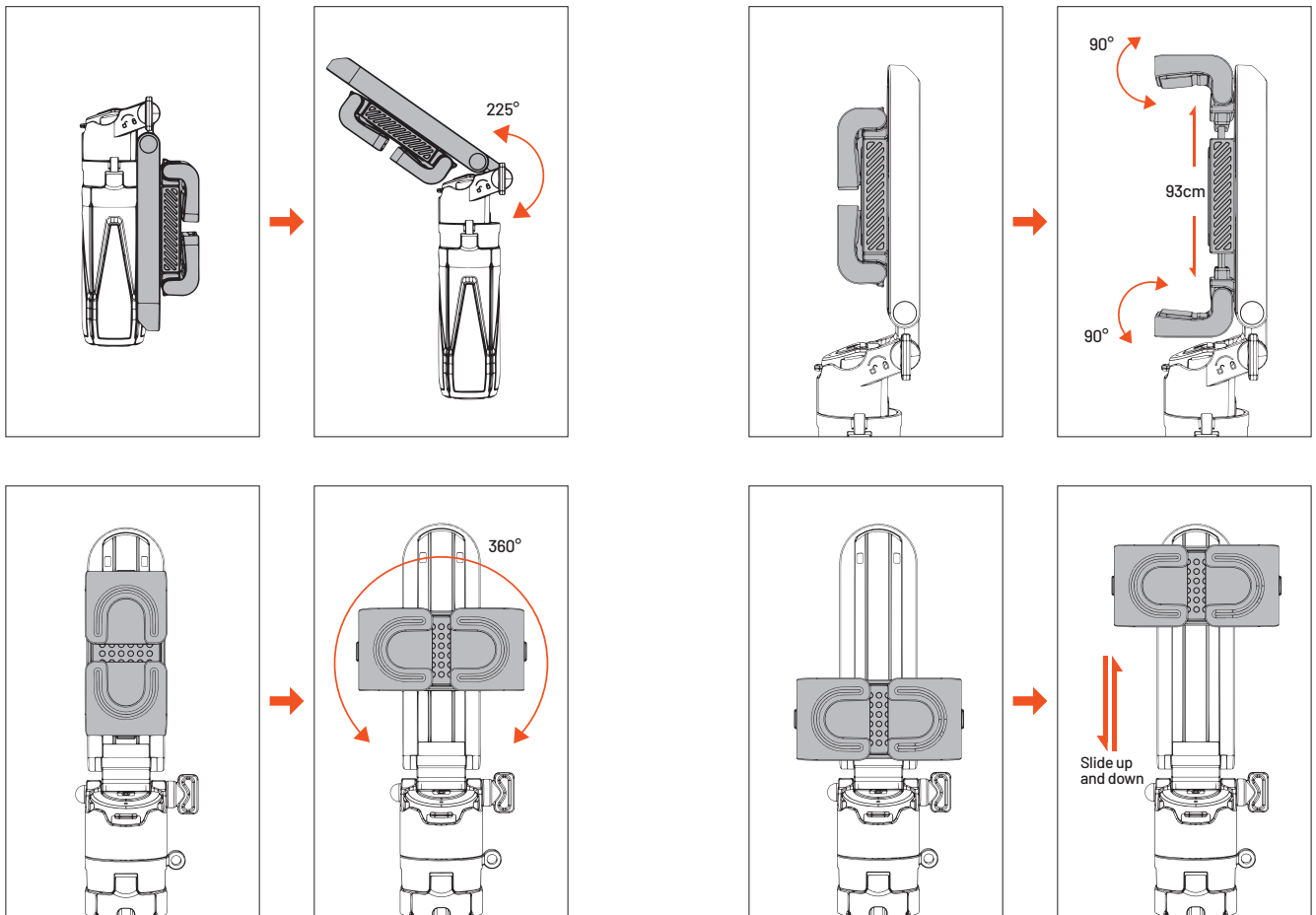
## Function Description



Find the "PUSH" button at the bottom of the handle and press it. The four legs will automatically extend forming the tripod base.



To open or close the tripod, pinch and push the electroplated part of the tripod either downward or upward depending on your desired action.



## Specifications

Battery Capacity	55mAh
Remote Charging Input	5V, 1A
Recharge Time	Approximately 60 minutes
Bluetooth Version	5.2
Compatible Bluetooth Versions	3.0 and above
Compatible Operating Systems	Android 8.0 or above, iOS 4 or above
Transmission Frequency	2.4GHz to 2.4835GHz
Communication Distance	10m (32 feet)
Supported Mobile Phone Size	4.7 to 7 inches
Material	ABS + Aluminum Alloy
Working Time	Up to 5,000 photos
Extended Length	41cm

## Troubleshooting

### A. Troubleshooting Remote Connection to Phone

1. Turn on the Bluetooth on the mobile phone and remove any unnecessary paired devices.
2. Turn off and restart the phone.
3. Turn off and restart the Bluetooth remote control.
4. Turn on the Bluetooth connection again.
5. Enable Bluetooth on the mobile phone, turn on the remote control, and search for the mobile phone interface. When the "PD-HSM12" appears, click Connect. The interface will display "connecting." Once "connect/pair" appears press the remote control button continuously and quickly. The connection should establish normally.

**Note:** The initial connection requires this procedure. Future connections will be automatic.

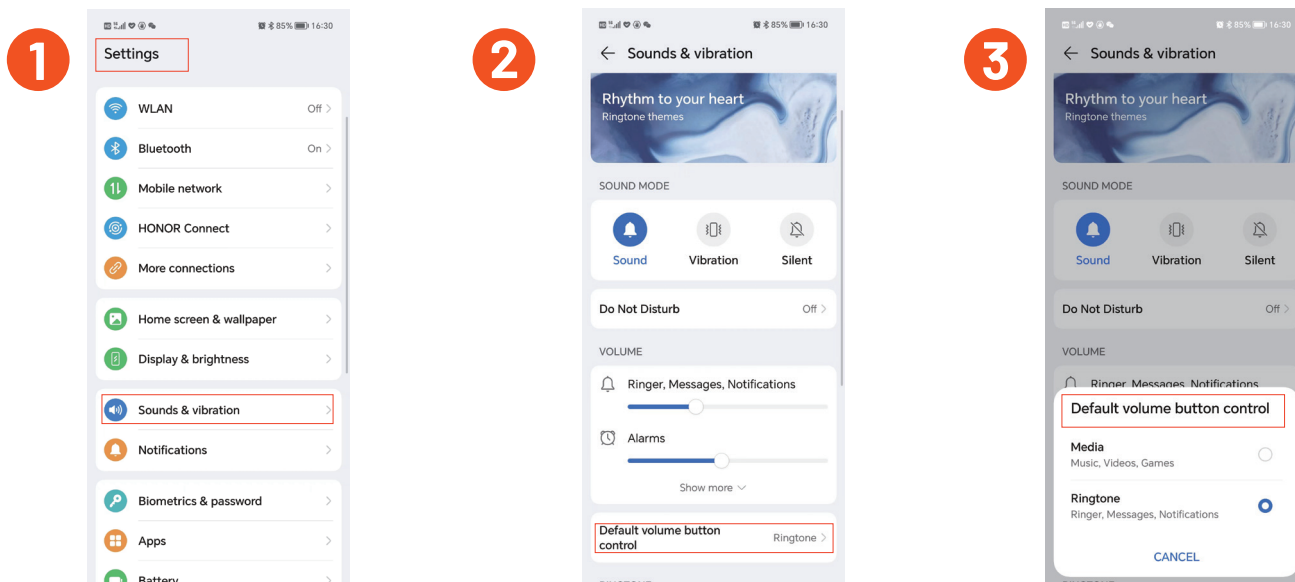
### B. For Android Phones

If there are issues with sound, quantity, or focus adjustment, follow these steps:

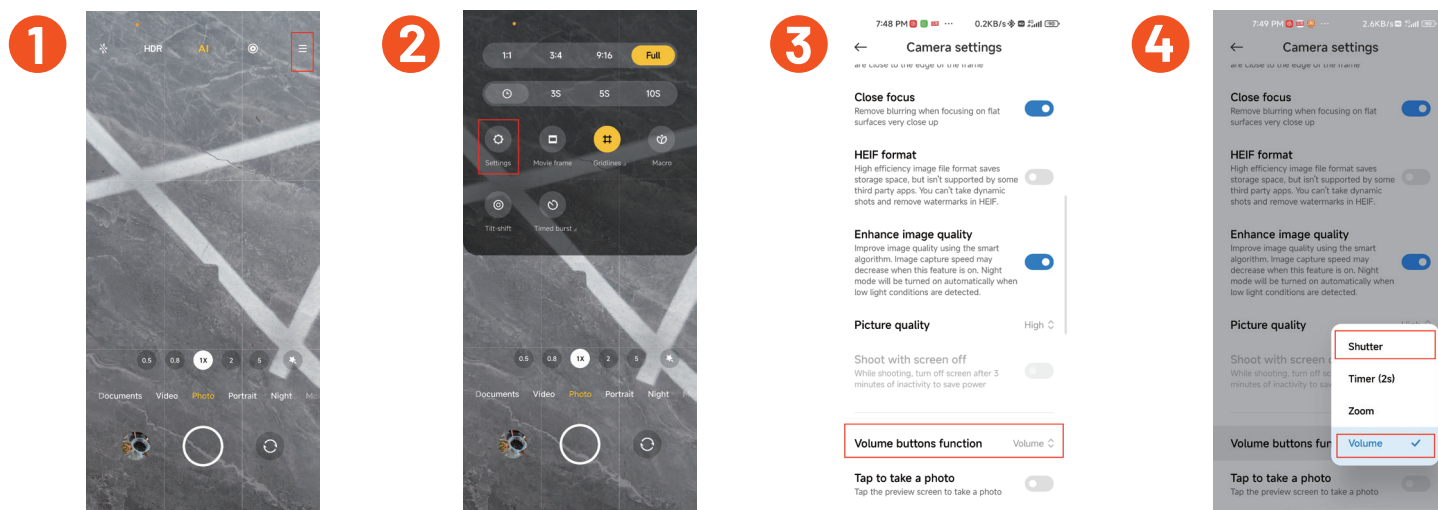
1. Open the camera to enter the photographing interface.
2. Swipe left or find the camera settings.
3. Click the volume key function.
4. Set the volume key function to shutter (do not select zoom or focus).
5. The camera settings may differ between mobile devices. Please adjust them accordingly.

## Set the Volume Button as Shutter

### A. Harmony OS



## B. Android OS



## Disposal

This product must not be disposed of as unsorted household waste. It is important to separate such waste for proper treatment and recycling, in compliance with local waste management regulations.



## **Warranty**

Products that you buy directly from our **Porodo** website or shop come with a 24-month warranty.

When you buy **Porodo** products from any of our approved sellers, you only get a 12-month warranty. If you want to extend this warranty, go to our website at **porodo.net/warranty** and fill out the form with your information. Don't forget to upload a picture of the product too. After we've checked and accepted your request, we'll send you an email to confirm that your product's warranty has been extended.

For more info, please check:  
**porodo.net/warranty**

## **Contact Us**

If you have any questions about this Privacy Policy, please contact us at:  
**info@porodo.net**

Website: **porodo.net**

Service Support: **support@porodo.net**

Instagram: **porodo**