



Green Lion

**Frost Core Ice Maker
With Touch Control Panel**

SKU: GNFROCICEWH

Model No: GXC6

Table of Contents

Safety Precautions	2
Warning	3
Schematic View	4
Control Panel Guide	5
Instructions for Use	6
A. Before First Use	6
B. Using the Machine	7
Indicator Guide	8
A. Ice Full	8
B. Water Refill	9
Cleaning and Maintenance	9
A. Self-Cleaning	9
B. Manual Cleaning	10
Cleaning Precautions	10
Specifications	11
Troubleshooting	12
Disposal	13
Warranty	13
Contact Us	13

Safety Precautions

✓ • To minimize the risk of injury or property damage, please adhere to the following safety precautions.

- The voltage from the outlet must match the specifications on the appliance nameplate.

⏚ • This appliance must be properly grounded.

🔌 • Using an extension cord may cause overheating and increase the risk of fire. If an extension cord must be used:

1. Ensure it has a grounding plug.

2. The rated capacity of the extension cord must be equal to or greater than the rating of this appliance.

- Do not operate the appliance if any component, including the cord or plug, is damaged.

- Unplug the unit before cleaning by hand.

🚫 • Only responsible and capable adults should operate the ice maker.

- Keep the power cord out of reach of children to prevent it from being pulled or causing a tripping hazard.

- Children should not be left unattended near the ice maker during operation.

💧 • Do not use water that is microbiologically unsafe or of unknown quality.

🚫 • Do not remove any safety, warning, or product information labels from the unit.


🚫 🚫 • Do not touch the evaporator with bare hands while the ice maker is operating.

- Never plug in or unplug the unit with wet hands.

- The appliance must not be used by individuals (including children) with reduced physical, sensory, or mental capabilities, or lacking experience


and knowledge, unless supervised or instructed.

- Children must be supervised to ensure they do not play with the appliance.
- Switch off the appliance and disconnect from the power supply before changing accessories or approaching moving parts during operation.

 • This appliance is intended for use in households and similar applications, including:


- Staff kitchen areas in shops, offices, and other work environments.
- Farmhouses.
- By clients in hotels, motels, and other residential-type environments.
- Do not store or use flammable vapors or liquids near the unit.

 • Do not immerse any part of the unit in water.


 • Do not attempt to disassemble, repair, modify, or replace any part of the ice maker.


• The unit must be installed and set up according to the provided instructions before use. It is intended for indoor household use only.

Warning

 **FIRE OR EXPLOSION HAZARD:** This unit contains isobutane refrigerant(R600a), a natural gas with high environmental compatibility but also highly combustible.

To reduce the risk of injury or property damage:

 • When handling, installing, or operating the unit, take care to avoid damaging the refrigerant tubing.

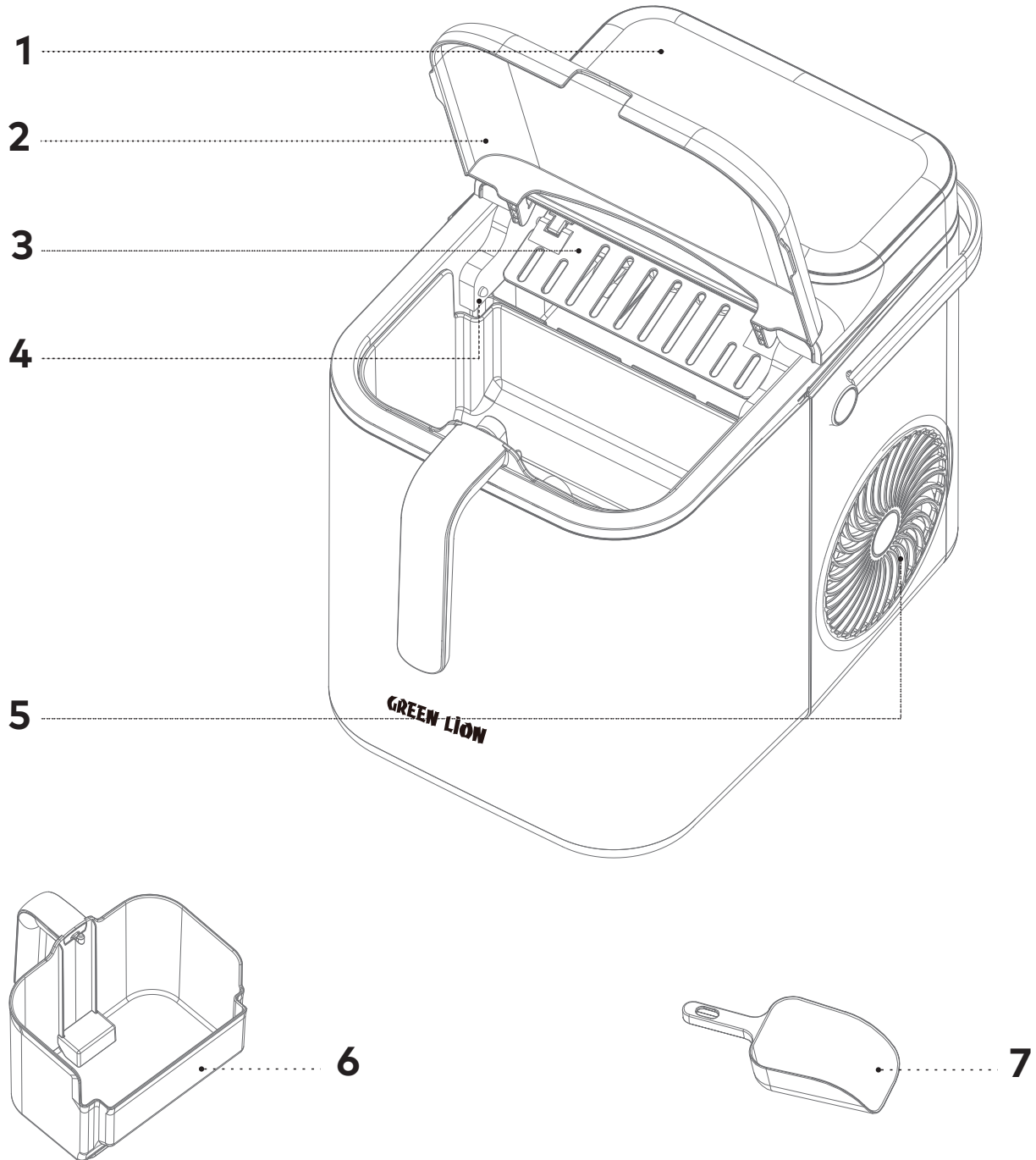
 • Dispose of the unit only in accordance with federal and local regulations. Contact local authorities for environmentally-safe disposal options.

 • Keep ventilation openings around the unit's enclosure clear of obstructions.

 • Do not place the unit near heat sources such as ovens.

- ① • Ensure a minimum of three inches of clearance around the sides and back walls of the unit for proper air circulation.
- ⊘ • Do not place the unit in direct sunlight.

Schematic View



1. Control Panel

2. Large Transparent Lid

3. Ice Shovel

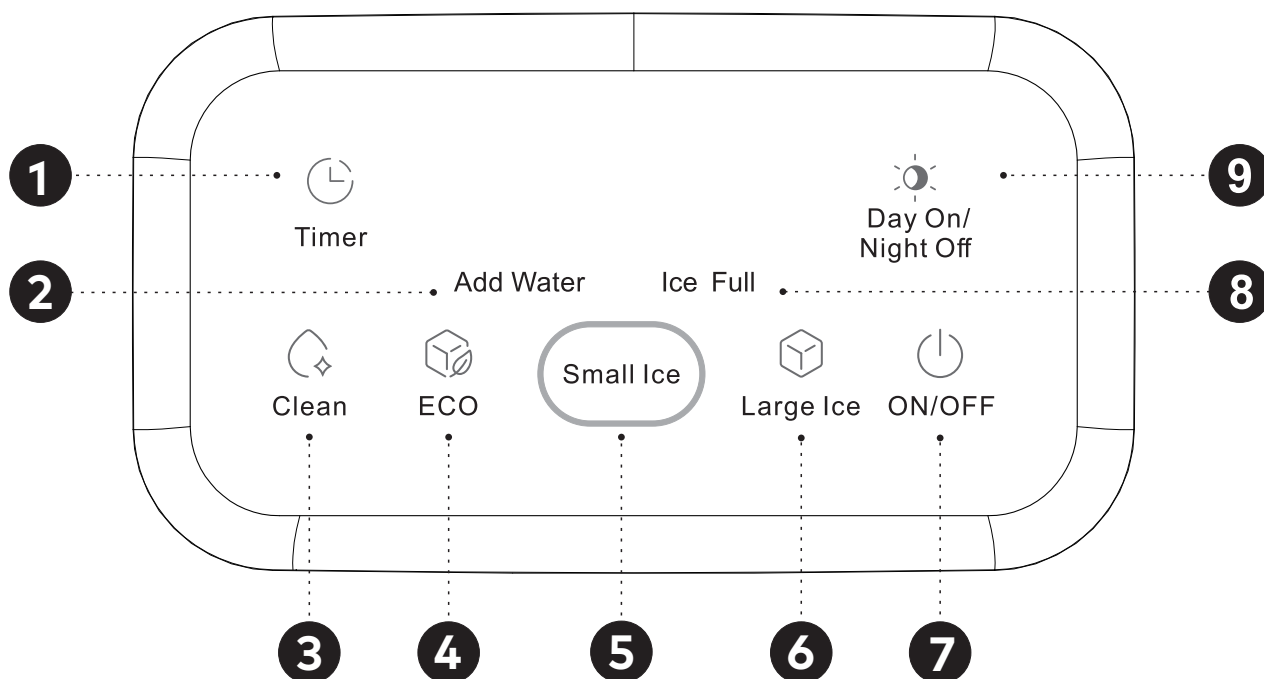
4. Ice-Full Sensor

5. Air Exhaust Fan

6. Ice Basket

7. Ice Scoop

Control Panel Guide

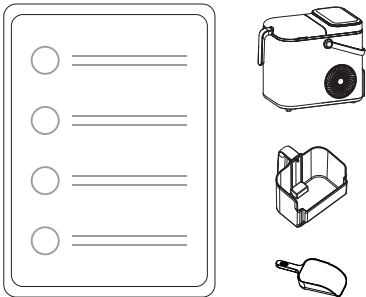
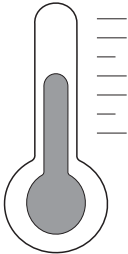
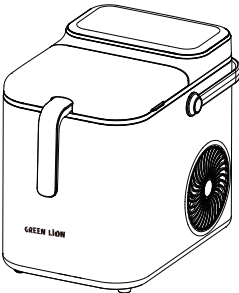


	Indicator	Function
1	Timer	In ice-making mode, press the "Timer" button to activate the reservation function. The display will blink at "01:30" when the Timer function is active.
2	Add Water	The electronic display will show "Add Water" when the ice basket is full.
3	Clean	In power-on mode, press the "Clean" button to initiate the self-cleaning mode.
4	ECO	In power-on mode, press the "ECO" button to activate the ECO-Ice making mode. When the basket is full, the ice maker will stop running for 40 minutes.
5	Small Ice	The display light will be steady white when the small ice mode is selected.
6	Large Ice	The display light will also be steady white when the large ice mode is selected.
7	On/Off	Press the ON/OFF button briefly to turn the ice maker on when it is in the standby stage.

8	Ice Full	The electronic display will show "Ice Full" when the water reservoir is low.
9	Day On/Night Off	In ice-making mode, press the "Day On/Night Off" button to automatically start and stop the unit based on changes in light.

Instructions for Use

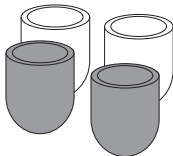
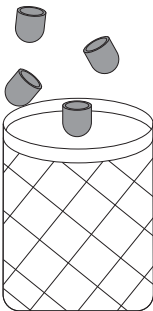
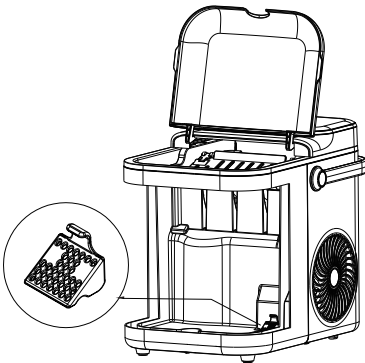
A. Before First Use



1. Place in upright position for 24 hours before use.

Use in locations with temperatures between 50°F and 100°F (10°C to 38°C).

Verify that all parts and ice maker accessories have been received.

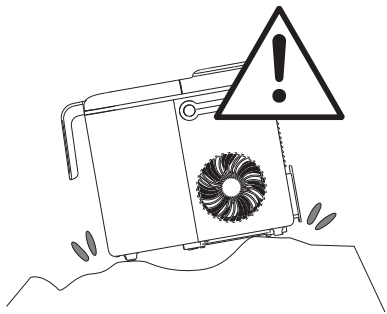


2. Carefully remove the protective film and clean the ice maker thoroughly before first use.
Note: Ensure the drain plug is properly installed.

Note: If the unit has not been used for an extended period, discard the first 4 cycles of ice.

Due to temperature variations and other factors, ice quality should stabilize after the first 1 to 3 cycles.

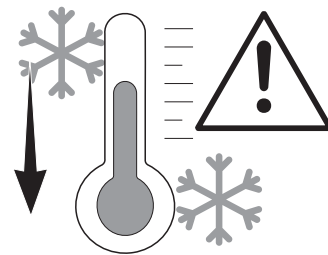
3. Avoid doing these actions:



Avoid placing the unit on an unstable base.

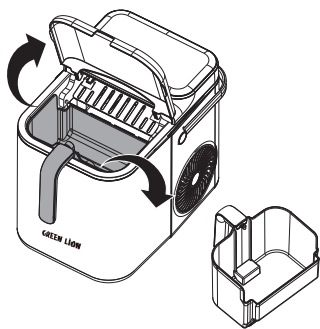


Do not use any liquids other than drinking water.

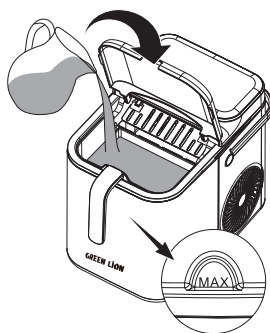


Do not use the unit in extremely high or low temperatures.

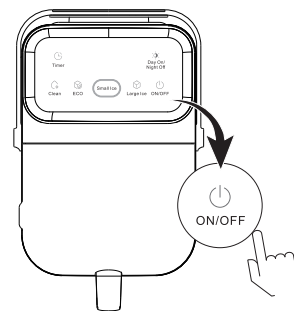
B. Using the Machine



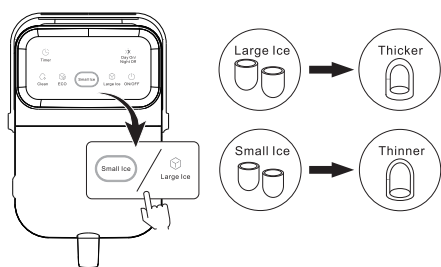
1. Open the cover and remove the ice basket.



2. Add water, ensuring not to exceed the "MAX" water level.

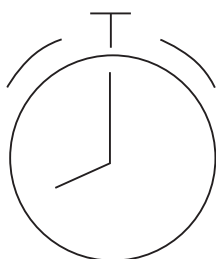


3. Press the ON/OFF button.

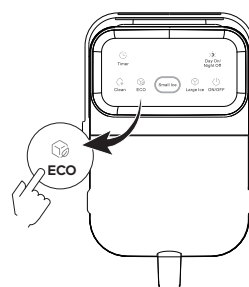


4. Press the Large Ice/Small Ice button to select the desired ice cube size.

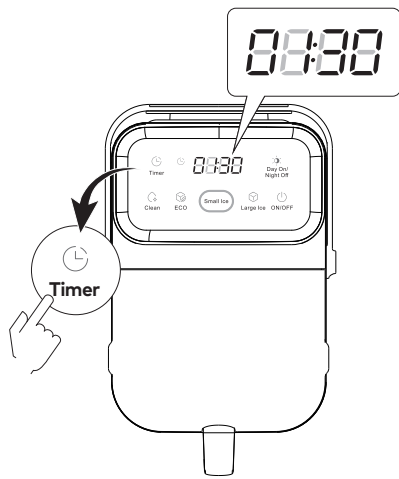
Tip: It is recommended to choose the small ice mode in low temperatures.



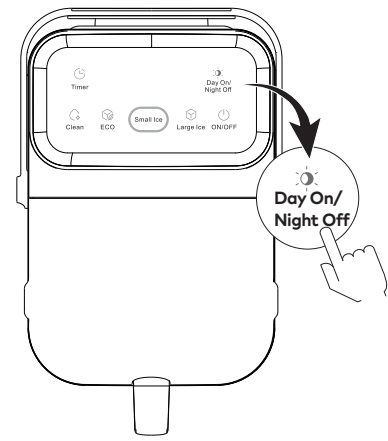
5. Wait 6 to 13 minutes. The ice-making time depends on room temperature and water temperature.




6. Press the "ECO" mode to select the setting where the ice maker will stop for 40 minutes after the ice basket is full.



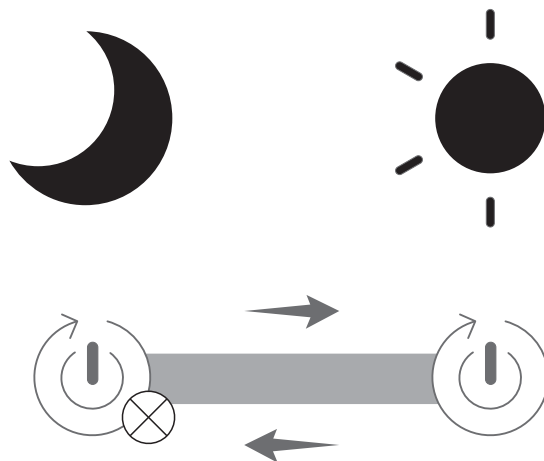
7. Press the "Timer" button while the unit is powered on to activate the reservation function. The digital display will flash to show the set reservation time of "01:30" (1.5 hours). Pressing the button briefly once will increase the reservation time by 30 minutes.



8. In ice-making operation mode, pressing the "Day On/Night Off" button  briefly activates the function. The principle of this function is to detect the ambient light intensity, starting the unit during the day and stopping it at night.

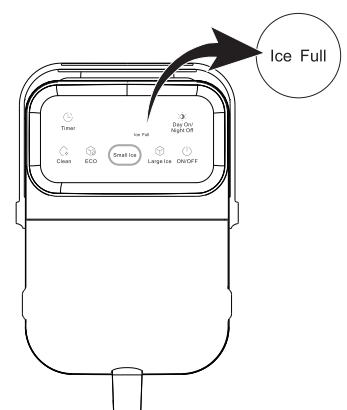
Indicator Guide

When the ambient light becomes darker, the machine will stop working. When the ambient light becomes brighter, the machine will start working.



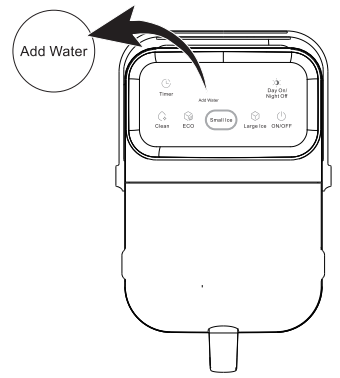
A. Ice Full

The "Ice Full" indicator will light up when the ice basket is full and ready.

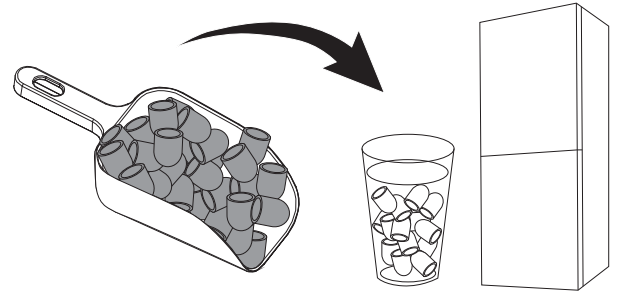


B. Water Refill

When the "Add Water" indicator is steady on the display, add water to the unit.



Note: Take the ice cubes out before they start to melt.

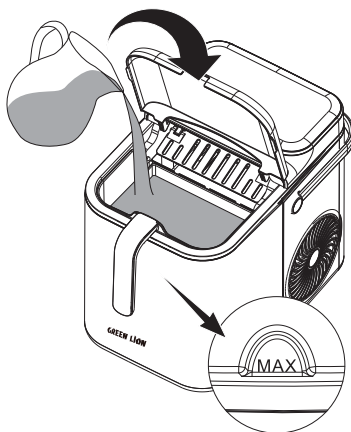


Note: It may take a little more time to restart the ice maker after an accidental power-off.

Cleaning and Maintenance

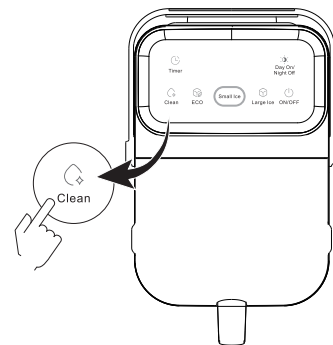
To keep the ice tasting fresh and the unit looking great, we recommend cleaning the unit once per week.

A. Self-Cleaning

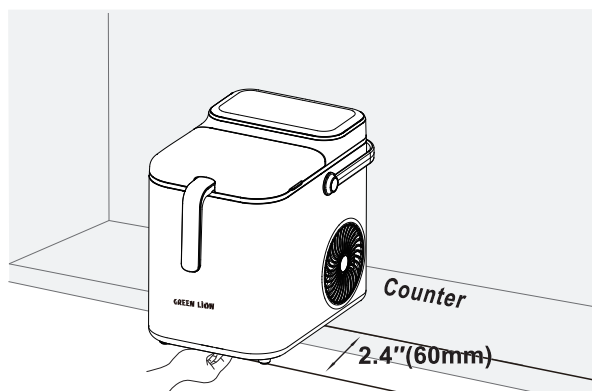


1. Remove the basket and add water up to the "MAX" water level.

Note: In areas with hard water, professional ice maker detergent can be used for cleaning.



2. In "POWER ON" mode, short press the "Clean" button to start the self-cleaning process.



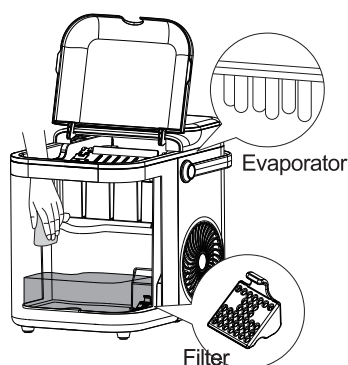
3. Drain excess water into the sink.



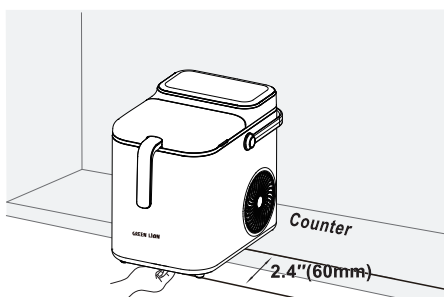
4. Clean the exterior with a cloth using mild dish washing soap.

B. Manual Cleaning

Turn off the unit and disconnect it from power before cleaning.



1. Clean using a soft cloth with warm water and vinegar. Regularly clean the filter, ice shovel, evaporator, and other small corners to prevent dirt buildup.



2. Drain excess water into the sink.



3. Clean the exterior with a cloth using mild dish washing soap.

Cleaning Precautions

1. Regularly perform manual cleaning, especially considering the varying water quality in different regions.
2. When the unit is not in use for an extended period, drain all water completely and dry the interior.
3. Store the unit in a well-ventilated area.
4. Prohibitions:
 - 4.1 Do not use organic solvents, boiled water, strong acids, or strong alkalis

for cleaning.

4.2 When cleaning the evaporator, be careful to keep the vertical prongs level. If the prongs are not level, the ice cubes may stick together during use.

Specifications

Model No.	GXC6
Material	ABS + PP
Rated Voltage	220-240V
Rated Frequency	50-60Hz
Rated Power	110W
Rated Current	0.7A
Water Tank	1.5L
Ice Basket	500 g
Climate Type	SN/N/ST/T
Ice Type	Bullet Type
Ice Output	9 pcs/6-10 min
Ice Production	12 kg/24H
Refrigerant	R600a/23g
Insulation	Reinforced
Safety Level	Class I
Power Cord	UK Plug 1.2m
Product Weight	6.8 kg
Product Dimensions	295×238×378 mm

Troubleshooting

Problem	Possible Cause	Solution
Unit not operating normally with unusual noises.	<ul style="list-style-type: none"> • Voltage is too low • Air intake is blocked 	<ul style="list-style-type: none"> • Turn off the machine and restart it after the voltage stabilizes. • Clear any debris around the unit.
Low water level indicator light illuminated.	<ul style="list-style-type: none"> • Lack of water • Clogged filter 	<ul style="list-style-type: none"> • Add water to the container and increase the water level line. • Clean the internal filter of the ice maker.
Full ice indicator light on in energy-saving mode.	Too much ice in the ice basket	Remove ice from the ice basket.
Ice basket full, but indicator light not displayed.	Sunlight interference	<ul style="list-style-type: none"> • Relocate the machine to a place not directly exposed to sunlight for ice-making. • Contact a service center for assistance.
Ice cubes sticking together.	<ul style="list-style-type: none"> • Ice-making cycle time is too long • Ambient temperature sensor is in contact with the compressor, causing misjudgment • Evaporator is too deeply immersed in the ice cube tray • Water temperature inside the liner is too low 	<ul style="list-style-type: none"> • Stop the ice-making process, wait for the ice to melt, then select the quick ice-making mode. • Contact a service center for further help. • If ice cubes were poured into the inner tank, replace the water inside the tank.
Normal display, but no ice production.	<ul style="list-style-type: none"> • The "Day Start Night Stop" function is activated, and it's too dark to operate • The machine's environmental temperature is too high • Abnormality in the cooling system 	<ul style="list-style-type: none"> • Turn off the "Day On Night Off" function. • Place the machine in an environment where the temperature is below 38°C for ice-making. • Contact a service center.
Both full ice and low water indicator lights flashing simultaneously.	Ice scoop is stuck	<ul style="list-style-type: none"> • Check if ice cubes are jamming the ice scoop. If so, remove the ice cubes. • Contact a service center if the issue persists.

Disposal

This product must not be disposed of as unsorted household waste. It is important to separate such waste for proper treatment and recycling, in compliance with local waste management regulations.

Warranty

Products that you buy directly from our **Green Lion** website or shop come with a 24-month warranty.

When you buy **Green Lion** products from any of our approved sellers, you only get a 12-month warranty. If you want to extend this warranty, go to our website at **<https://www.greenlion.net/warranty>** and fill out the form with your information. Don't forget to upload a picture of the product too. After we've checked and accepted your request, we'll send you an email to confirm that your product's warranty has been extended.

For more info, please check:

<https://www.greenlion.net/warranty>

Contact Us

If you have any questions about this Privacy Policy, please contact us at:

Website: **<https://www.greenlion.net/>**

Sales: **sales@greenlion.net**

Service Support: **Support@greenlion.net**

Telegram: **[@greenlion_global](https://t.me/greenlion_global)**

Instagram: **[@greenlion_global](https://www.instagram.com/greenlion_global)**