

# PORODO



## Porodo

**SKWER Smart Watch  
with 1.72" HD Display**

SKU: PDSWT71

# Table of Contents

Operating Instructions	2
Charging Instructions	3
Install the App	3
Bluetooth Pairing	4
Specifications	5
Safety Precautions	5
Disposal	6
Warranty	7
Contact Us	7

# Operating Instructions

## 1. Button

**1.1** Press and hold for 5 seconds to power the device on or off.

**1.2** Short press to wake the screen.

**1.3** Short press to return to the main screen.

**1.4** Tap to enter the main dial. You can switch dials using the crown.

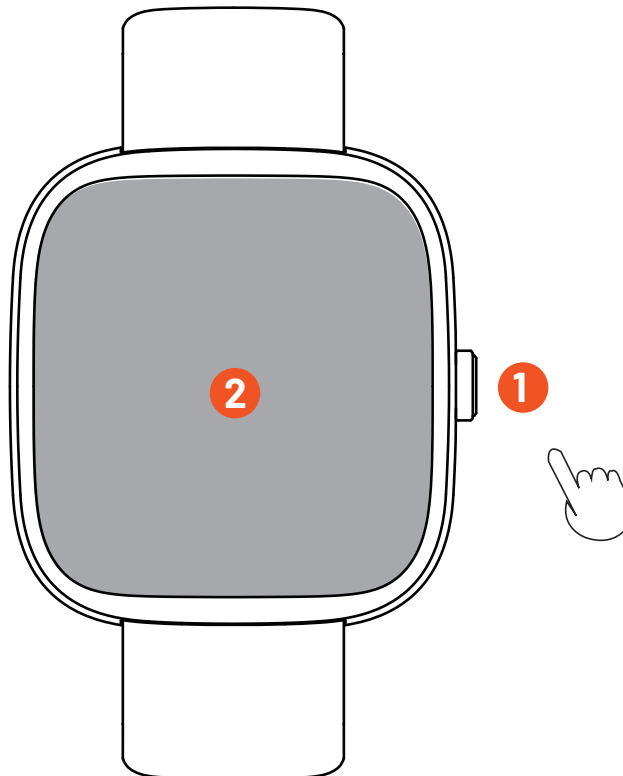
## 2. Screen

From the main screen, press and hold for 3 seconds to select different watch faces.

### Note:

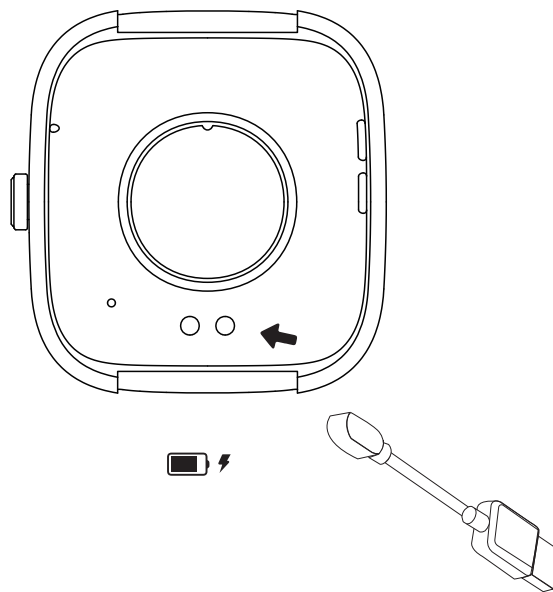
**a.** Please ensure that your phone remains close to your watch for optimal connectivity. If the devices become disconnected, refresh the mobile app interface.

**b.** If certain features are not functioning properly, please delete the app and reinstall it.



## Charging Instructions

1. Connect the charging thimble to the watch.
2. Once connected, the charging icon will appear on the screen.
3. After the watch is fully charged, disconnect the charging cable from the power source.
4. If the product is not in use for an extended period, ensure it is charged at least every 3 months to maintain optimal battery health.



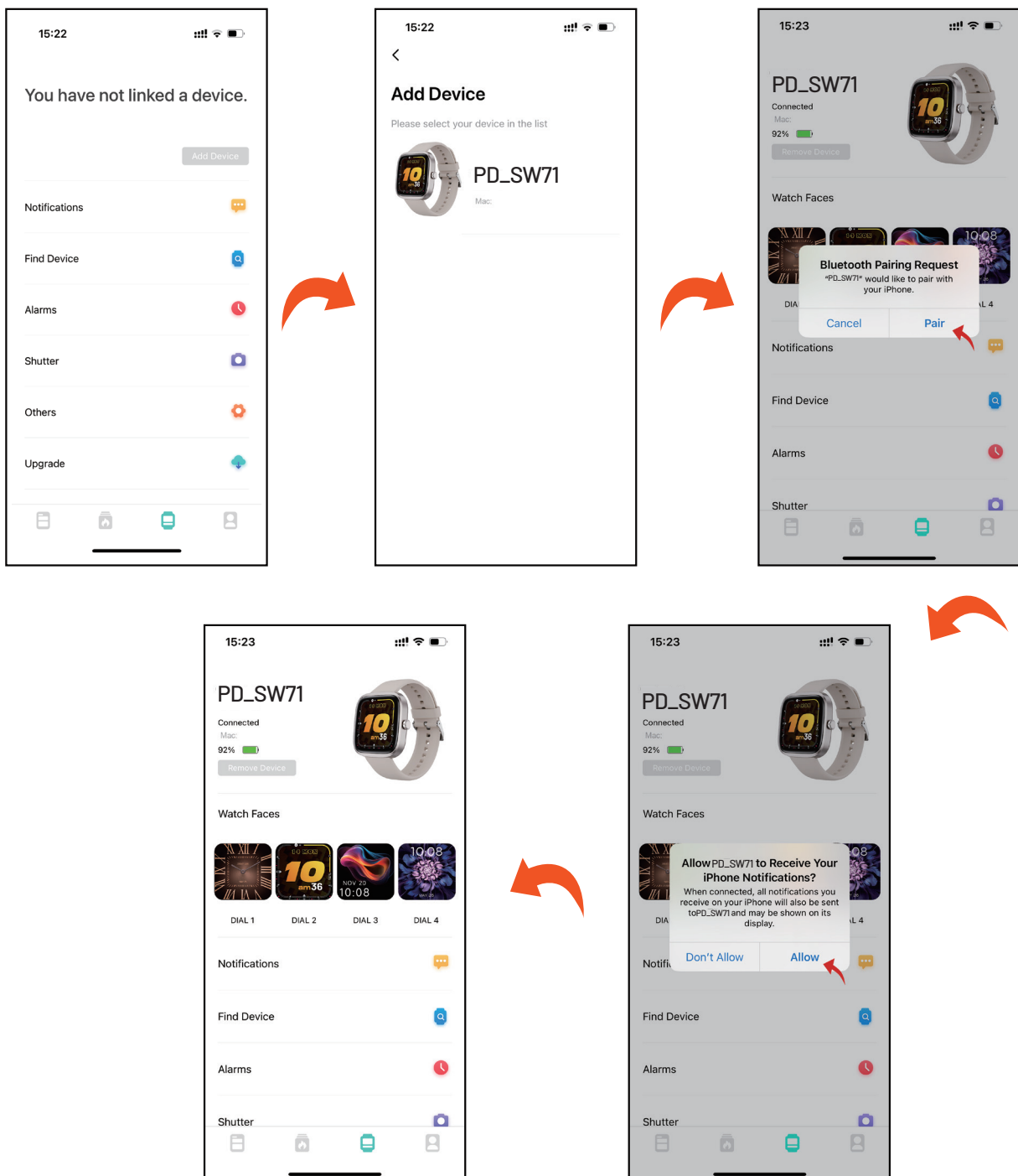
## Install the App

1. Download and install the "Dafit" app by scanning the QR code with your phone. Select the corresponding version based on your mobile platform.
2. Alternatively, you can search for "Dafit" in your mobile app store and install it directly from there. The app is compatible with iOS and Android 10.0+ versions.



# Bluetooth Pairing

1. Enable Bluetooth on your mobile device and open the Dafit app.
2. Navigate to Device > Add Device, then search for "PD\_SW71" and select the product.
3. Select the corresponding model and follow the on-screen prompts to complete the pairing process.
4. Once successfully paired, the message "Binding is successful" will appear on the screen.



## Specifications

Screen Size	1.72"
Screen Resolution	360 x 360 HD
Water Resistant Level	IP68
Bluetooth	V5.2
RAM	128MB
Battery Capacity	230mAh
Working Time	5 Days
Standby Time	30 Days
Charging Time	2H
Compatibility	iOS 10+ & Android 10.0+
Bluetooth Frequency	2.400~2.4835GHZ
Product Weight	60g

## Safety Precautions

- 1.** This product is not designed for use during activities such as bathing, swimming, diving, in hot springs, saunas, or any other water-related activities, as water exposure may damage the device.
- 2.** Ensure that both the device and its accessories remain dry to prevent the accumulation of dirt and bacteria.
- 3.** Avoid using a microwave, blower, or any other heat sources to dry or heat the device. Refrain from using the device in high-temperature environments or placing it in areas subject to extreme heat. Additionally, avoid strong impacts or vibrations, as they may cause damage to the device or its accessories. Keep the product away from direct sunlight, high temperatures, humidity, or open flames.
- 4.** Keep the device away from children and animals to prevent accidental ingestion or damage.
- 5.** Protect the device from impacts and avoid dropping it, as this could cause significant damage.
- 6.** Do not expose the device to extreme temperatures, as this may affect its performance and longevity.



- 7.** Do not clean the device with abrasive detergents, as this may cause surface damage. Use a soft, damp cloth for cleaning instead.
  - 8.** The device should only be disassembled by trained professionals.
  - 9.** After charging, always disconnect the charging cable from the power source to prevent short-circuits when the cable comes into contact with conductive objects.
  - 10.** This smartwatch is not a medical device. The data provided by this watch is for reference purposes only and should not be used for diagnostic or treatment purposes.
- Note:** Some functions of the device, such as caller ID display and message notifications, may not be compatible with some smartphone versions.

## Disposal

This product must not be disposed of as unsorted household waste. It is important to separate such waste for proper treatment and recycling, in compliance with local waste management regulations.



## **Warranty**

Products that you buy directly from our **Porodo** website or shop come with a 24-month warranty.

When you buy **Porodo** products from any of our approved sellers, you only get a 12-month warranty. If you want to extend this warranty, go to our website at **porodo.net/warranty** and fill out the form with your information. Don't forget to upload a picture of the product too. After we've checked and accepted your request, we'll send you an email to confirm that your product's warranty has been extended.

For more info, please check:  
**porodo.net/warranty**

## **Contact Us**

If you have any questions about this Privacy Policy, please contact us at:

**info@porodo.net**

Website: **porodo.net**

Service Support: **support@porodo.net**

Instagram: **porodo**