

# PORODO



## Porodo

**SALUD Smart Watch  
with 1.43" Screen Display**

SKU: PDSWT67

# **Table of Contents**

Operating Instructions	2
Charging Instructions	3
Download and Install the App	3
Bluetooth Pairing	4
Specifications	5
Safety Precautions	5
Disposal	6
Warranty	7
Contact Us	7

# Charging Instructions

## 1. Button

**1.1** Press and hold for 5 seconds to power on/off.

**1.2** Short press to wake the screen.

**1.3** Short press to return to the homepage.

## 2. Button

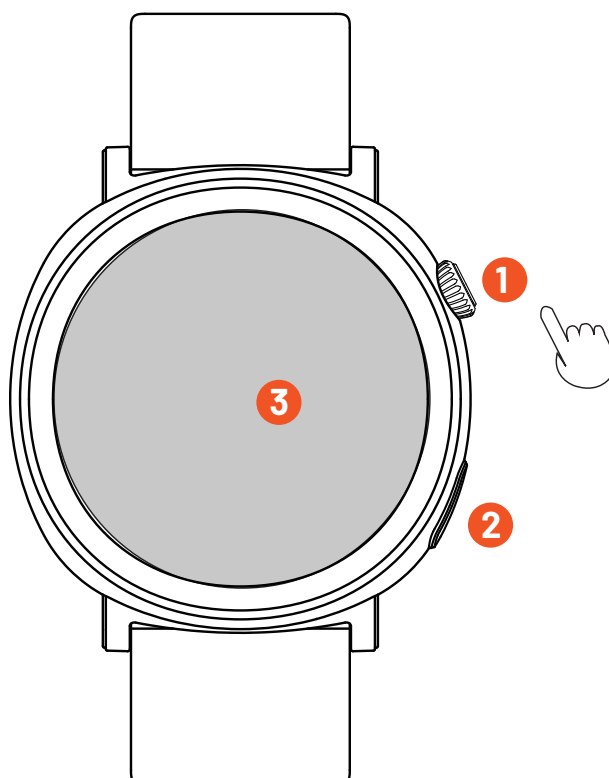
**2.1** Press to enter sport mode.

**2.2** This button's functionality can be customized in the settings.

## 3. Screen

Press and hold for 3 seconds on the homepage to access other watch face options.

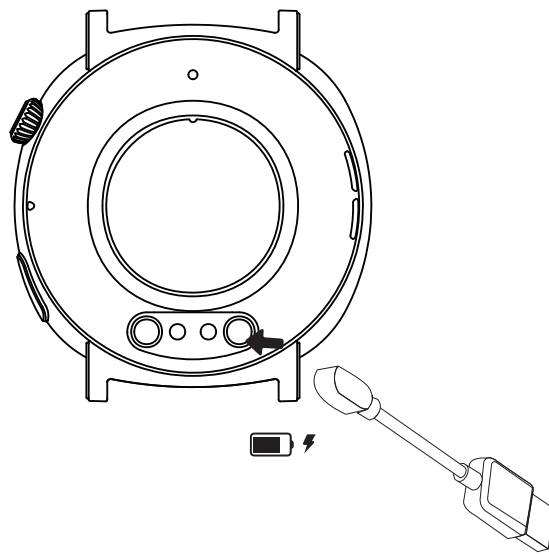
**Note:** Please keep your phone close to your watch. If disconnected, refresh the mobile app interface. If some features are not working properly, please delete the app and reinstall it.



## Operating Instructions

1. Connect the charging pin to the watch.
2. Once connected, the charging icon will appear on the screen.
3. When the watch is fully charged, please disconnect the charging cable from the power source.

**Note:** If the product is not in use for an extended period, please ensure it is charged at least once every 3 months.



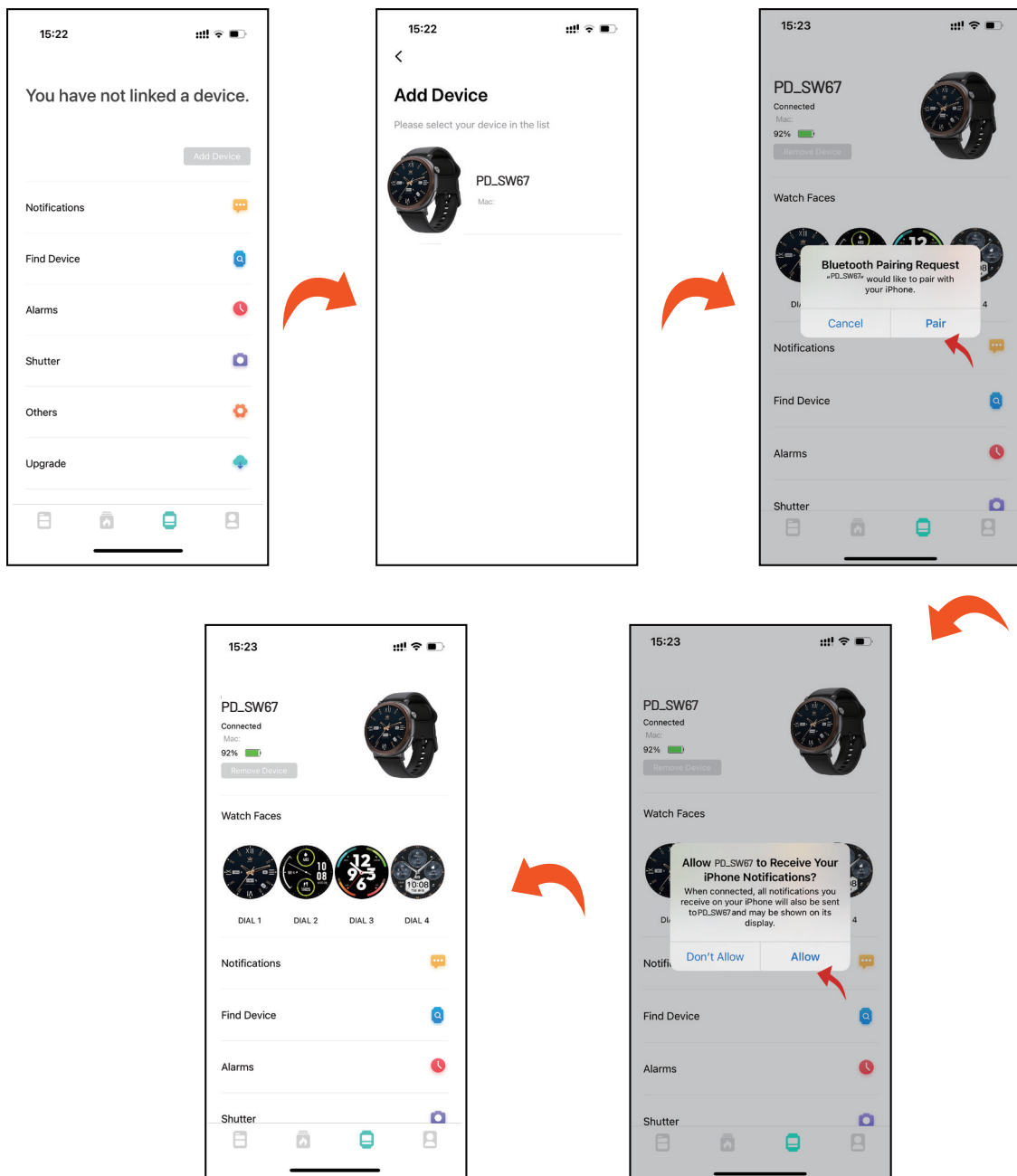
## Download and Install the App

1. Download and install the "Dafit" app by scanning the QR code with your phone. Select the corresponding software based on your mobile platform.
2. Alternatively, you can search for "Dafit" in your mobile app store and install it directly from there. The app is compatible with iOS and Android 10.0+ versions.



# Bluetooth Pairing

1. Turn on your mobile Bluetooth.
2. Open the Dafit app and navigate to Device > Add Device.
3. Search for "PD\_SW67" and select the corresponding model.
4. Follow the on-screen prompts to complete the pairing process.
5. Once paired, the message "Bind is successful" will appear on the screen.



## Specifications

Screen Size	1.43"
Screen Resolution	AMOLED 466 x 466
Water Resistant Level	IP68
Bluetooth	V5.2
RAM	128MB
Battery Capacity	280mAh
Working Time	Up to 5 Days
Standby Time	Up to 30 Days
Charging Time	2H
Compatibility	iOS 10+ & Android 10.0+
Bluetooth Frequency	2400~2480MHz
Model	PDSWT67
Product Weight	63g

## Safety Precautions

- 1.** This product is not designed for use during activities such as bathing, swimming, diving, in hot springs, saunas, or any other water-related activities, as water exposure may damage the device.
- 2.** Ensure that both the device and its accessories remain dry to prevent the accumulation of dirt and bacteria.
- 3.** Avoid using a microwave, blower, or any other heat sources to dry or heat the device. Refrain from using the device in high-temperature environments or placing it in areas subject to extreme heat. Additionally, avoid strong impacts or vibrations, as they may cause damage to the device or its accessories. Keep the product away from direct sunlight, high temperatures, humidity, or open flames.
- 4.** Keep the device away from children and animals to prevent accidental ingestion or damage.
- 5.** Protect the device from impacts and avoid dropping it, as this could cause significant damage.
- 6.** Do not expose the device to extreme temperatures, as this may affect its performance and longevity.

- 7.** Do not clean the device with abrasive detergents, as this may cause surface damage. Use a soft, damp cloth for cleaning instead.
  - 8.** The device should only be disassembled by trained professionals.
  - 9.** After charging, always disconnect the charging cable from the power source to prevent short-circuits when the cable comes into contact with conductive objects.
  - 10.** This smartwatch is not a medical device. The data provided by this watch is for reference purposes only and should not be used for diagnostic or treatment purposes.
- Note:** Some functions of the device, such as caller ID display and message notifications, may not be compatible with some smartphone versions.

## Disposal

This product must not be disposed of as unsorted household waste. It is important to separate such waste for proper treatment and recycling, in compliance with local waste management regulations.



## **Warranty**

Products that you buy directly from our **Porodo** website or shop come with a 24-month warranty.

When you buy **Porodo** products from any of our approved sellers, you only get a 12-month warranty. If you want to extend this warranty, go to our website at **porodo.net/warranty** and fill out the form with your information. Don't forget to upload a picture of the product too. After we've checked and accepted your request, we'll send you an email to confirm that your product's warranty has been extended.

For more info, please check:  
**porodo.net/warranty**

## **Contact Us**

If you have any questions about this Privacy Policy, please contact us at:

**info@porodo.net**

Website: **porodo.net**

Service Support: **support@porodo.net**

Instagram: **porodo**