

PORODO
LIFESTYLE



Porodo Lifestyle
Vacuum Fresh Portable
Juice and Smoothie Blender

SKU: PD-P55JV

Table of Contents

Usage Precautions	2
Instructions for Use	3
Specifications	4
Schematic View	5
Operation Mode	6
Cleaning Instructions	6
Troubleshooting	7
Disposal	7
Warranty	8
Contact Us	8

Usage Precautions

Please read the instructions carefully:

Note: To prevent misuse, it is important to carefully read the instructions.

- 1.** This product operates with a DC motor powered by a lithium battery. The charger is compatible with all standard smartphone USB chargers.
- 2.** Before use, please ensure the product is fully charged using the USB power cord provided by our company. The recommended charging time is less than two hours. Additionally, please wash and thoroughly dry all components that come into contact with food prior to use.
- 3.** The lid should only be opened after the product is securely closed and the stirring knife has completely stopped.
- 4.** When cleaning the product, ensure that the power switch is turned off and that the silicone plug on the charging port is tightly sealed. Do not immerse the main unit in water to avoid the risk of water entering the motor and damaging the electronic components.
- 5.** To avoid overloading the electronic components and causing overheating, do not use the product for more than five consecutive uses. Continuous usage beyond this limit may affect the product's lifespan.
- 6.** This product is equipped with an overload protection function. If the food material is too large, the product will automatically stop and a red light will illuminate for five seconds as a protective measure. After removing the food material, the product can be restarted.
- 7.** Do not disinfect any part of the product with water exceeding 60°C or use a microwave oven, as this may cause deformation and damage.
- 8.** The main unit should not be placed in a dishwasher or cleaning equipment, as water should not come into contact with the motor housing.
- 9.** Avoid using steel wool, abrasive cleaners, or corrosive liquids to clean the product.
- 10.** This appliance is designed specifically for juicing and is not intended for use in mincing meat, grinding nuts, or processing soy products.
- 11.** Do not invert or operate the product if the straw is still inserted into the main unit or if the silicone plug is not properly sealed.

- 12.** When the product is unattended, always disconnect the power supply before assembling, disassembling, or cleaning. Children should not operate the juicer unsupervised.
- 13.** Exercise caution when removing the mixing knife, cleaning the main unit, and the mixing cup.
- 14.** Always turn off the power switch and disconnect the power supply before replacing accessories or handling moving parts.
- 15.** Before discarding the appliance, ensure that the battery is removed using the appropriate tools.
- 16.** Before discarding the appliance, remove the battery and place it in a separate battery waste bin. Dispose of the battery through an authorized disposal service.
- 17.** Ensure that the appliance is powered off before removing the battery. Batteries should be disposed of in accordance with safety regulations.
- 18.** This product is intended for household use only. If the product is improperly used, or if the instructions in the manual are not followed, the warranty will be voided, and any resulting damage will not be covered by the company. The company disclaims any responsibility for such losses.
- 19.** Before using the product for the first time, fully charge it and thoroughly clean all parts that come into contact with food.
- 20.** The product is equipped with double safety protection measures. The appliance will be in a waiting operation state until the cup body is securely rotated into the fixed position on the fuselage.
- 21.** This appliance can only be charged with an input of 1.0 to 5.0A, and the maximum output energy must not exceed 15W when using a certified adapter.

Instructions for Use

- 1.** Review the instructions detailed in Usage Precautions section.
- 2.** Wash the fruit and cut it into small pieces, approximately 1.5*1.5 cm. For fruits with pits, hard materials, thick skin, or shells, please remove the said parts first.
- 3.** Place the fruit into the cup, filling it up to approximately 60% of the maximum scale of the cup body. Then, fill the cup with water up to the maximum scale of the cup body.

4. Afterward, insert the main engine into the cup. The indicator light will flash to indicate that the main engine is in place.

Note: Ensure that the fruit and water remain within the maximum scale limit to prevent spillage.

5. To enhance the taste, begin the vacuum process first. Place the product upright on a tabletop and complete the vacuuming after 40 seconds.

Note: Do not begin vacuuming immediately after stirring to avoid damage caused by juice suction by the vacuum pump.

6. Double-click to start the product and reverse it (as shown in Figure 4). The default working time for the product is 40 seconds. During the working time, gently shake the product for better mixing.

7. After the juice is finished, the product will automatically enter standby mode. Press the exhaust button to open the top cover, and you can drink or plug it in.

8. If the product cannot be started and the indicator is blinking red while drinking through a straw, insert the USB cable into the charging port compatible with each 5V power supply. When fully charged, the product indicator light will turn white.

Note: When charging, the indicator light will be red. When fully charged, the indicator light will turn white.

9. This product can be charged by connecting it to various smartphone chargers using their respective USB charging cables. It is also compatible with power banks for charging.

Note: When charging, ensure that the mixing cup is securely tightened to the main unit before beginning the charging process. It takes approximately 3 hours for the product to fully charge, and once charged, it can make about 8 cups of fresh juice.

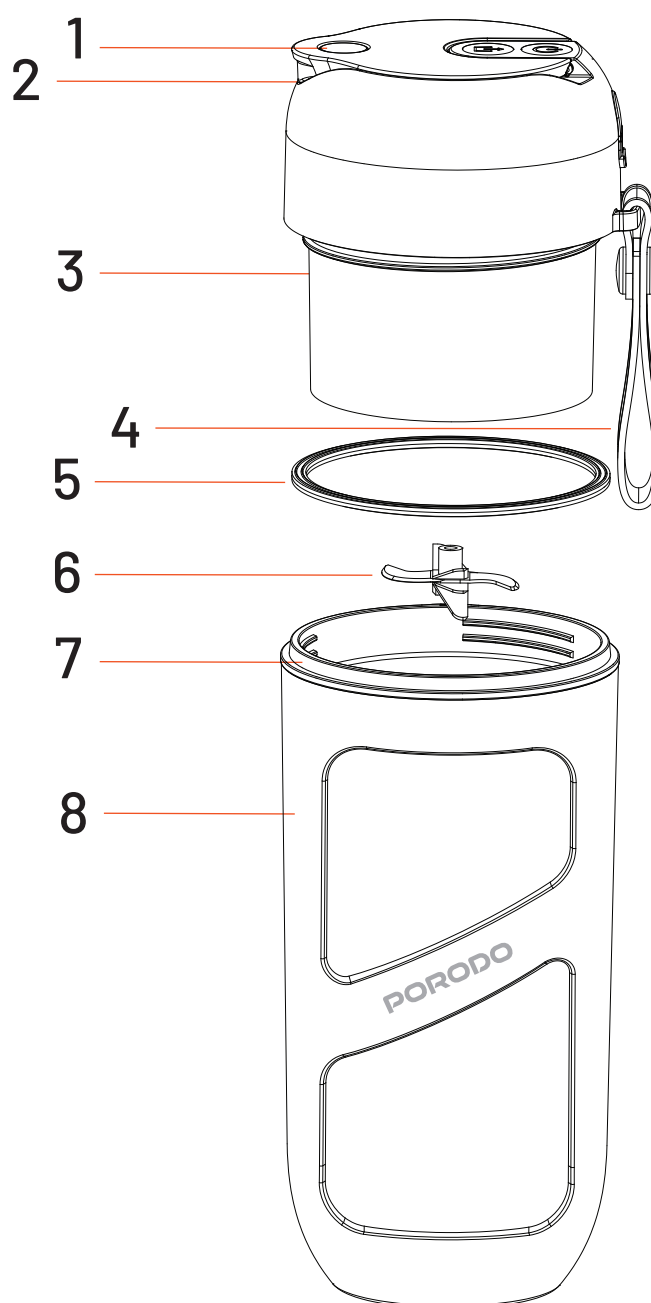
Specifications

Battery Voltage	7.4V
Charging Input	5W 5V/1A
Charging Interface	USB-C

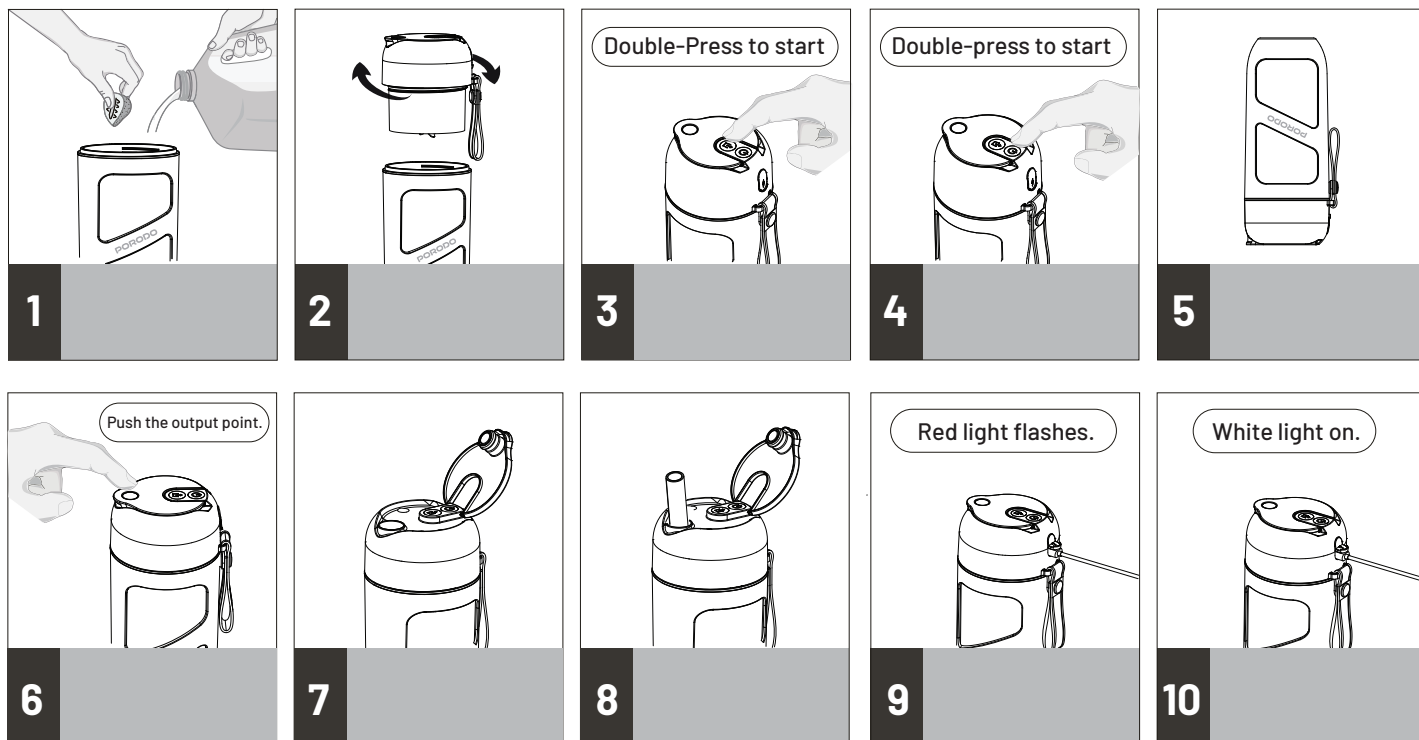
Motor Speed	18000 RPM
Capacity	380ml
Charging Time	3 Hours
Dimensions	94 x 86 x 210 mm
Weight	553g

Schematic View

- 1.** Output
- 2.** Upper Lid
- 3.** Main Engine
- 4.** Lanyard
- 5.** Engine Sealing Ring
- 6.** Mixing Blade
- 7.** Mixing Cup
- 8.** Unit Body



Operation Mode

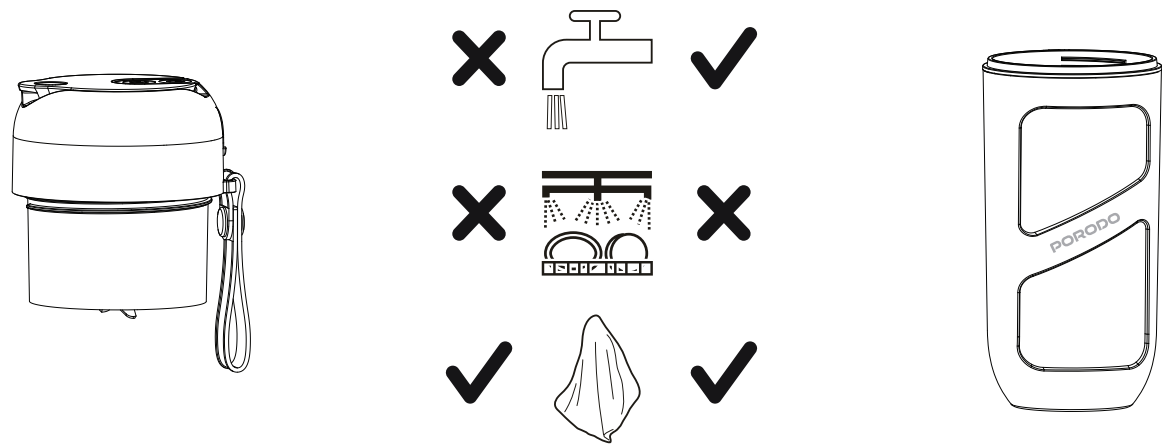


1. Add the ingredients to the cup.
2. Install the host onto the cup.
3. Start the vacuum process.
4. Begin mixing the ingredients.
5. Flip the cup upside down to mix.
6. Press the exhaust button to release air.
7. Open the cover to drink the juice.
8. Insert the straw to drink.
9. Ensure the product is charged.
10. The product is fully charged.

Cleaning Instructions

1. Do not wash the main motor unit under running water.
2. Do not place the motor unit and the cup in a dishwasher.
3. Clean the main motor unit with a dry cloth.
4. Use a damp cloth to clean the cup.

5. Make sure all parts are completely dry before reassembling.
6. Store the device in a dry place after cleaning.



Troubleshooting

Problem	Possible Cause	Solution
The machine does not stir or stops as the red light is flashing.	Power is low.	Charge the device.
The machine stopped mid-operation and the red light turned on for 5 seconds.	The blade is jammed.	Remove any food stuck in the blade and restart.
Stopped functioning and the blue is flashing.	The appliance is tilted over 30 degrees.	Assemble the product.
Liquid leakage and strange odor emit from the machine.	The sealing ring was not properly installed or the cup was not securely tightened.	Reinstall the silicone ring and tighten the main engine.

Disposal

This product must not be disposed of as unsorted household waste. It is important to separate such waste for proper treatment and recycling, in compliance with local waste management regulations.

Warranty

Products that you buy directly from our **Porodo** website or shop come with a 24-month warranty.

When you buy **Porodo** products from any of our approved sellers, you only get a 12-month warranty. If you want to extend this warranty, go to our website at **porodo.net/warranty** and fill out the form with your information. Don't forget to upload a picture of the product too. After we've checked and accepted your request, we'll send you an email to confirm that your product's warranty has been extended.

For more info, please check:

porodo.net/warranty

Contact Us

If you have any questions about this Privacy Policy, please contact us at:

info@porodo.net

Website: **porodo.net**

Service Support: **support@porodo.net**

Instagram: **porodo**