

PORODO
LIFESTYLE



Porodo Lifestyle
Full Light Phone Stand

SKU: PD-LFST062

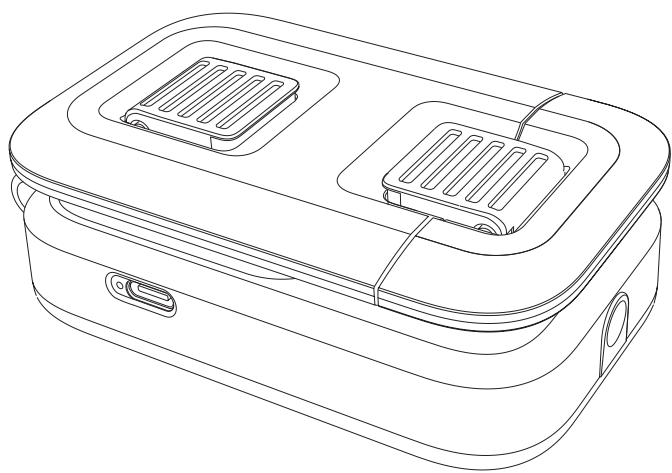
Table of Contents

Specifications	2
Package Contents	2
Schematic View	3
Operating Instructions	3
Unfolding Guide	4
Usage Configurations	4
Important Note	5
Disposal	5
Warranty	6
Contact Us	6

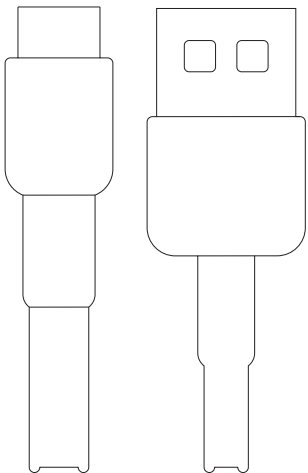
Specifications

Battery Capacity	1000mAh
Recharge Time	80min
Working Time	Up to 8h
Charging Interface	Type-C
Power	2W
Lumens	24-26lm
Light Beads	60 Yellow & White, 22 RGB
Illumination Distance	3M
Color Temperature	2500-6000K
Product Weight	206g
Product Dimension	45×65×110mm

Package Contents



Phone Stand



Charging Cable

Schematic View



- 1. Shade
- 2. RGB Button
- 3. Correlated Color Temperature Button
- 4. 1.4" Interface
- 5. Phone Holder
- 6. Bracket
- 7. Charging Indicator Light
- 8. Charging Port

Operating Instructions

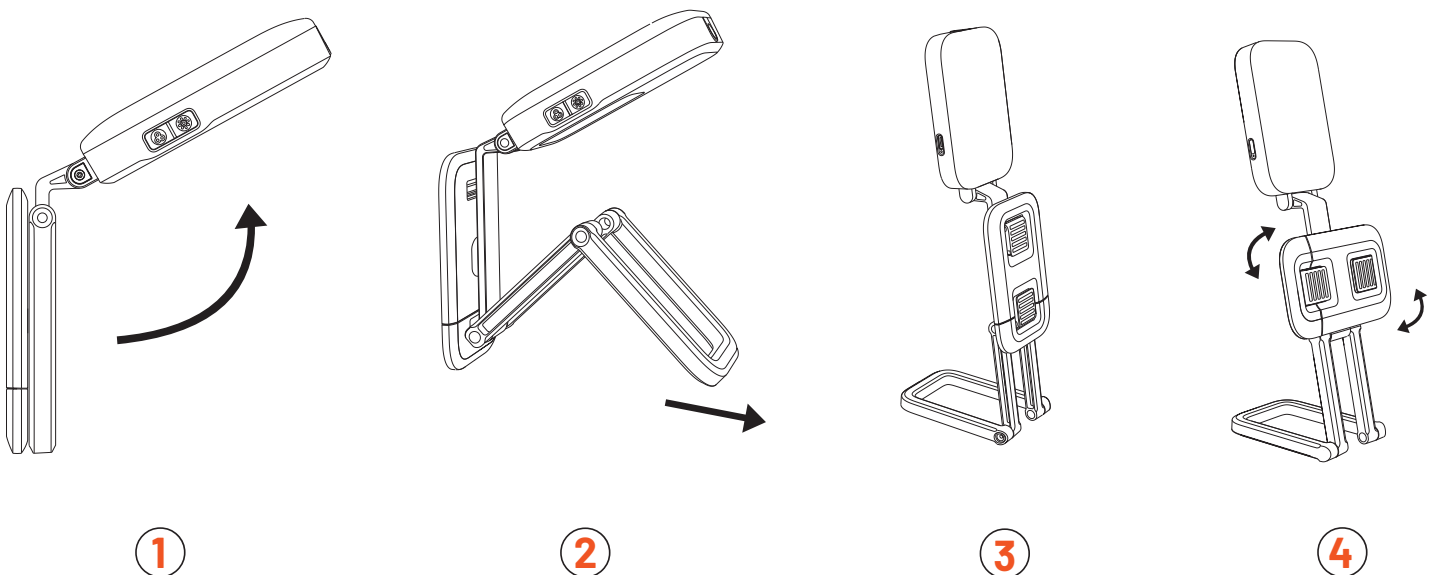
1. RGB Control: Press and hold the RGB control button for three seconds to activate the RGB light. To deactivate, press and hold the button again for three seconds. Once activated, a short press will allow you to cycle through different RGB lighting effects.

2. Color Temperature Control: Press and hold the color temperature control button for three seconds to switch on the yellow and white light. To switch it off, press and hold the button again for three seconds. After activation, a brief press can be used to toggle between color temperature modes.

3. Charging: While charging, the indicator light will appear red. Once fully charged, the light will turn green, signaling that charging is complete.

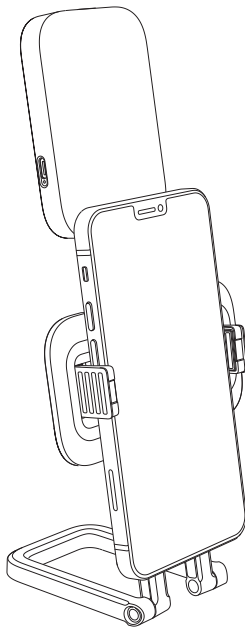
Unfolding Guide

1. Rotate the lamp to the desired position.
2. Extend the bracket from its storage position.
3. Align the device according to the provided diagram for optimal use.
4. The phone holder is capable of rotating 360 degrees.

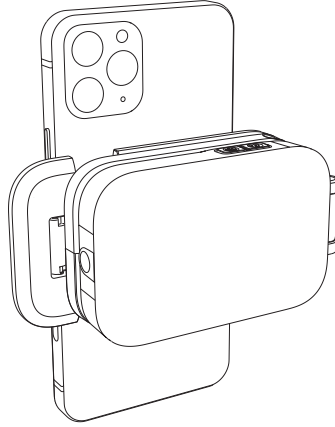


Usage Configurations

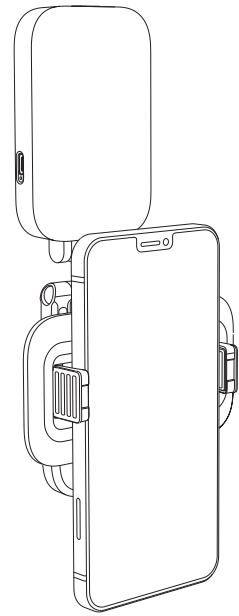
1. Position the fill light on a table to enhance lighting for activities such as video calls, photography, or streaming.
2. Use the fill light for the rear camera to improve photo and video quality in low-light environments, enhancing detail and reducing shadows.
3. Employ the fill light for the front camera to ensure evenly distributed lighting for selfies or front-facing video recordings, optimizing facial features and clarity.



1



2



3

Important Note

1. Ensure that the power supply used has an output of DC5V-1A. Using a different output may lead to overheating or malfunction of the product.
2. Do not disassemble any parts of the product without proper authorization, as this could lead to malfunction or damage.
3. This product includes lithium batteries, which must be disposed of separately from regular household waste to ensure environmental safety.
4. Avoid squeezing or exposing the batteries to high temperatures, such as throwing them into a fire. If the batteries exhibit severe swelling, cease usage immediately to prevent hazards.

Disposal

This product must not be disposed of as unsorted household waste. It is important to separate such waste for proper treatment and recycling, in compliance with local waste management regulations.

Warranty

Products that you buy directly from our **Porodo** website or shop come with a 24-month warranty.

When you buy **Porodo** products from any of our approved sellers, you only get a 12-month warranty. If you want to extend this warranty, go to our website at **porodo.net/warranty** and fill out the form with your information. Don't forget to upload a picture of the product too. After we've checked and accepted your request, we'll send you an email to confirm that your product's warranty has been extended.

For more info, please check:

porodo.net/warranty

Contact Us

If you have any questions about this Privacy Policy, please contact us at:

info@porodo.net

Website: **porodo.net**

Service Support: **support@porodo.net**

Instagram: **porodo**