

**PORODO**  
LIFESTYLE



**Porodo Lifestyle**  
**Cold Press Slow Juicer**

SKU: PD-LFST058

# Table of Contents

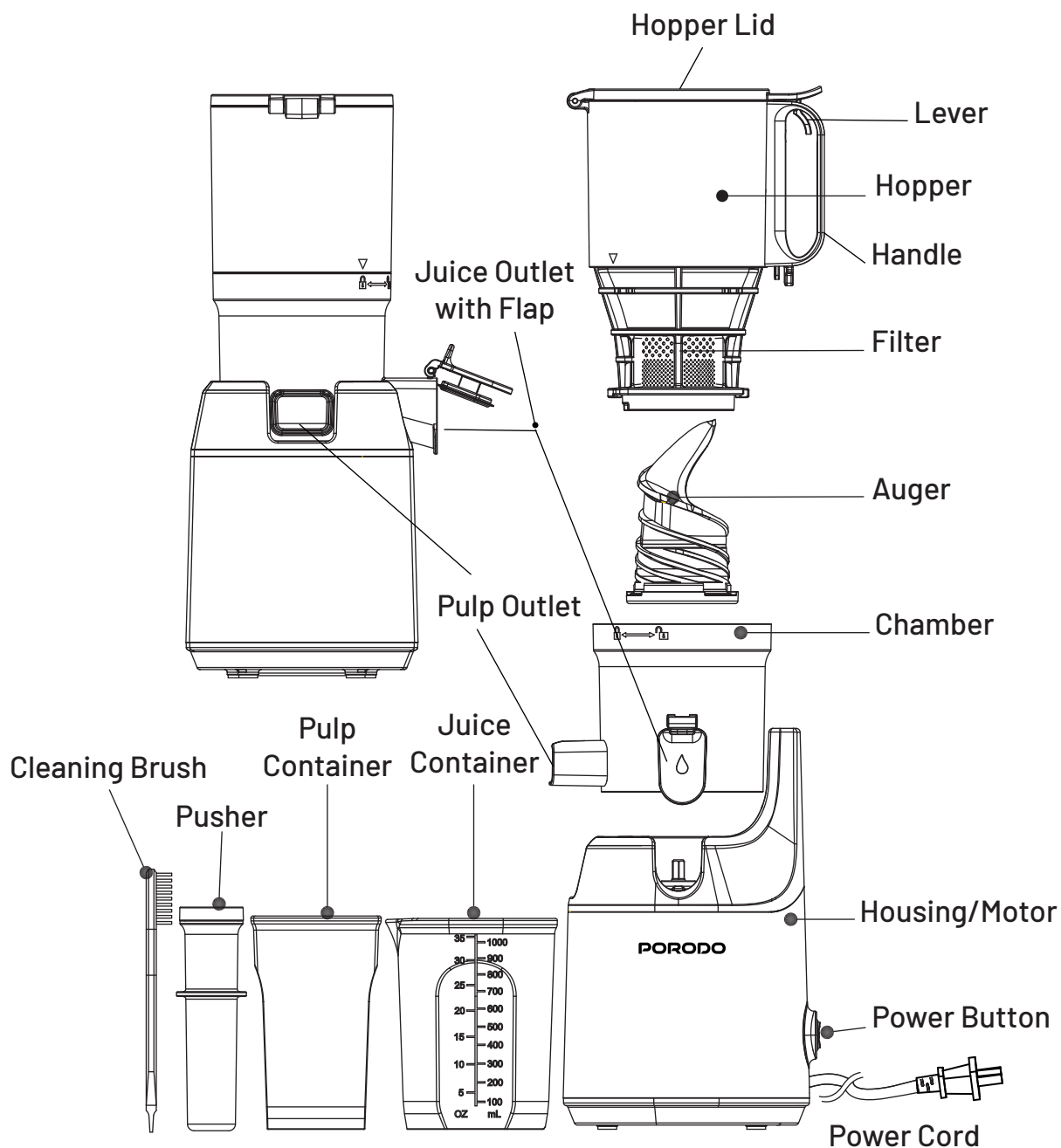
Safety Precautions	2
Schematic View	2
Power Button	4
Assembly Guide	4
Instructions for Use	5
Disassembly Guide	6
Maintenance	7
Troubleshooting	8
Specifications	9
Warranty	10
Contact Us	10

## Safety Precautions

1. Read all instructions carefully before using the appliance.
2. Keep the product out of the reach of children, infants, and pets.
3. To avoid electrical shock, do not immerse the cord, plug, or main body (motor) in water or any other liquid.
4. Ensure close supervision when the appliance is used near children.
5. Unplug the appliance from the outlet when it is not in use, before assembling or disassembling parts, and before cleaning.
6. Keep hands and utensils away from moving parts. Always unplug the appliance when adjusting, assembling, disassembling, or cleaning.
7. Do not use the appliance if the cord or plug is damaged, or if the appliance has malfunctioned or been damaged. Refer the product to professional service agents.
8. Using attachments that are not recommended or provided by the manufacturer may result in fire, electric shock, or injury.
9. Keep the cord away from edges of tables or counters and do not let it touch hot surfaces.
10. Ensure that the juicer cover is securely clamped in place before turning on the motor. Do not unfasten the clamps while the juicer is operating.
11. After each use, turn the switch to the Off position. Make sure the motor has completely stopped before disassembling the juicer.
12. Warning: NEVER insert fingers or other objects into the juicer while it is in operation.
13. If food becomes lodged in the opening, use the food pusher or another piece of fruit or vegetable to push the food down. If this is not effective, turn off the juicer, unplug it from the electrical outlet, and disassemble it to remove the remaining food.
14. Do not use the juicer outdoors.
15. Do not place the juicer near a hot gas or electric burner, or in a heated oven.
16. Use the appliance only for its intended purpose.
17. Keep hands and utensils away from moving blades or discs while processing food to reduce the risk of injury and prevent damage to the juicer.

- 18.** Do not plug in the juicer until you are familiar with all instructions and operating procedures.
- 19.** Do not unplug the appliance by pulling on the cord. To disconnect, grasp the plug and pull it from the outlet.
- 20.** Keep fingers and hands away from discharge openings while the appliance is in operation.
- 21.** Do not clean the appliance using steel wool, abrasive cleaning agents, or corrosive liquids (such as gasoline or acetone).
- 22.** Always disconnect the appliance from the power supply if it is left unattended, or before assembling, disassembling, or cleaning.

## Schematic View



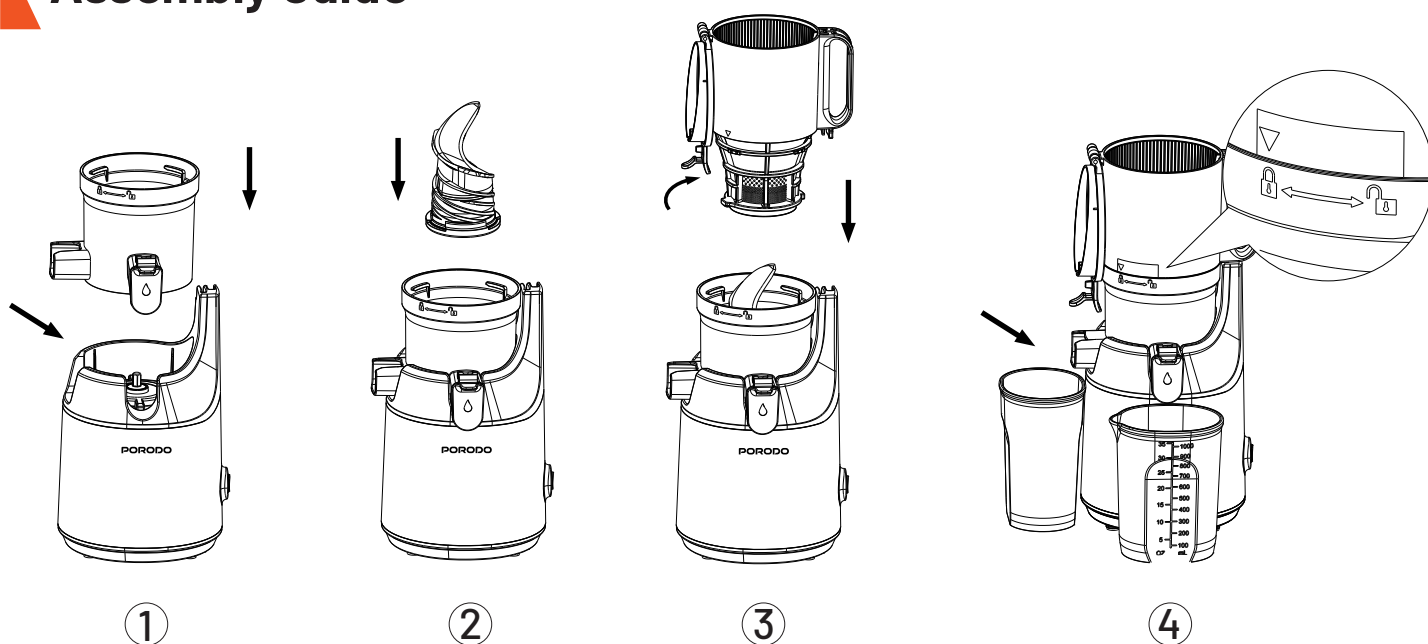
## Power Button

- "ON":** Switch the power button to the "ON" position to start the appliance.
- "O":** After juicing is complete, switch to the "O" position to stop the appliance.
- "R":** Switch to the "R" position to back up the ingredients if they become clogged.
- Note:** Press and hold the "R" button to back up. Release the button to stop the appliance.



**Note:** Before plugging in the power cord, ensure that the power button is in the "O" position.

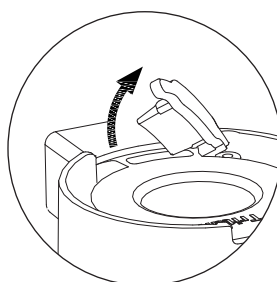
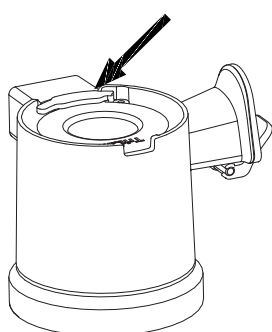
## Assembly Guide



**1.** Place the chamber on top of the housing.

**Note:** Ensure that the silicone valve of the chamber is securely closed before assembling. If the valve is open, close it properly and tightly by pressing.

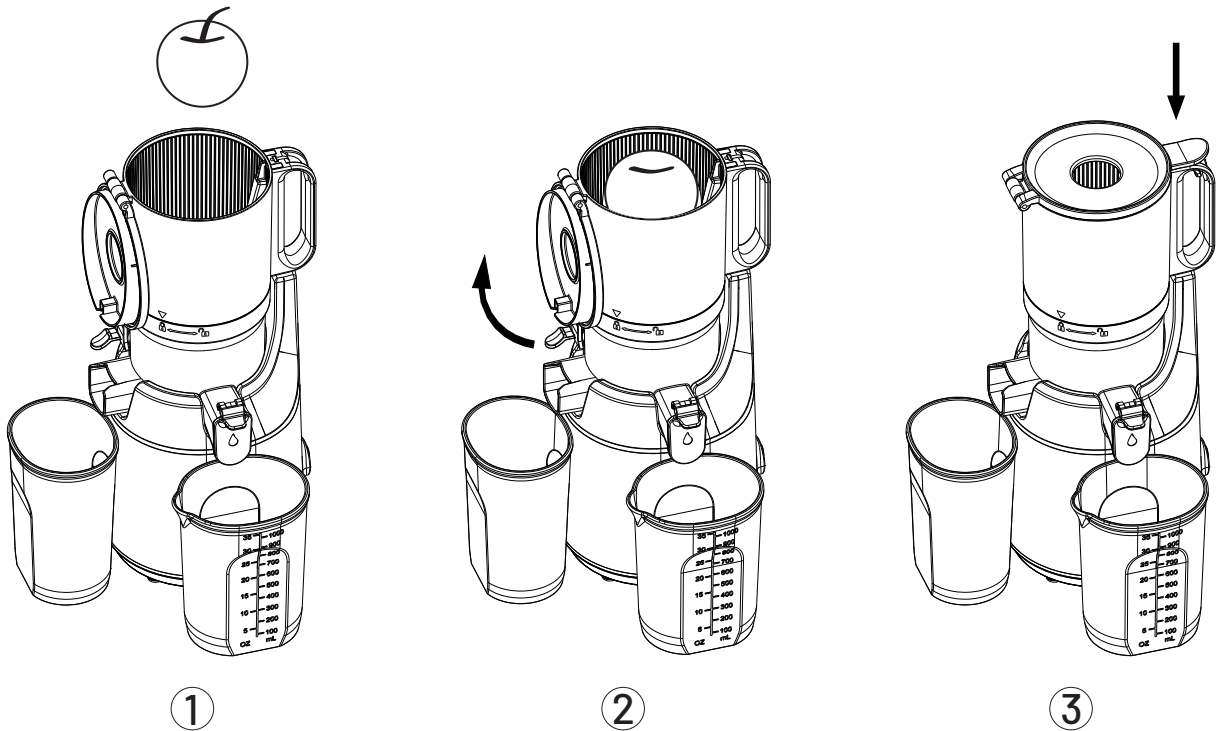
Silicone Valve Closed



Silicone Valve Opened

2. Insert the auger firmly into the center chamber.
3. Open the hopper cover by pressing the lever. Position the hopper vertically onto the chamber. Align the hopper assembly guide mark ▼ with the chamber assembly guide mark 🔓.
4. Turn the hopper clockwise until it aligns with the chamber assembly guide mark 🔒 to assemble. If the internal parts are not assembled correctly, the hopper will not close.

## Instructions for Use



1. Add ingredients only up to the limit mark of the hopper.

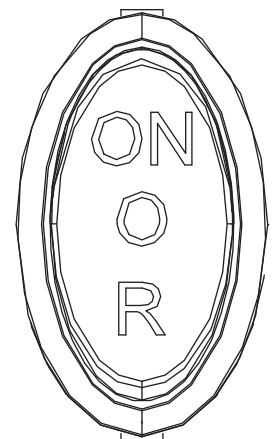
**Note:** For soft ingredients, mix them with other ingredients to ensure smooth extraction.

2. Close the hopper cover and keep the juice cap open.

\* Before pressing the power button, place the juice container and pulp container in position.

\* The juice may flow back into the hopper if the juice cap is closed during extraction.

3. Switch the power button to the "ON" position to start the appliance.



**4.** To add more ingredients during operation, use the additional inlet or open the hopper cover.

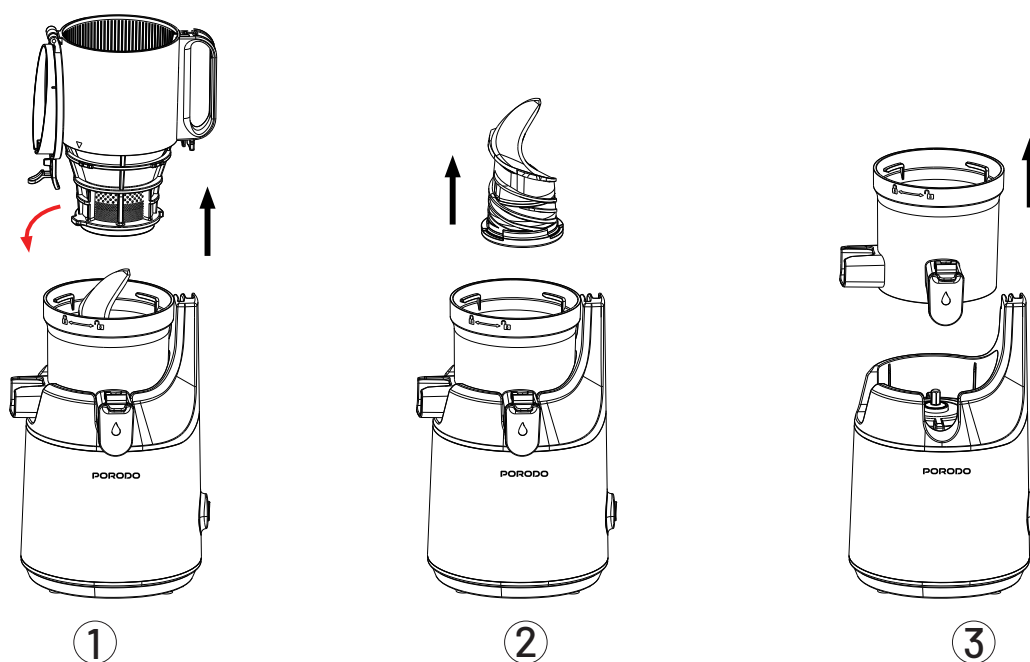
\* When the hopper cover is opened, the operation will stop.

\* Only use the designated pusher to add ingredients.


**5.** Once juicing is complete, switch the power button to the "0" position to stop the machine.

## **Disassembly Guide**

Once the product has completely stopped operating, turn it off and unplug the power cord with dry hands.



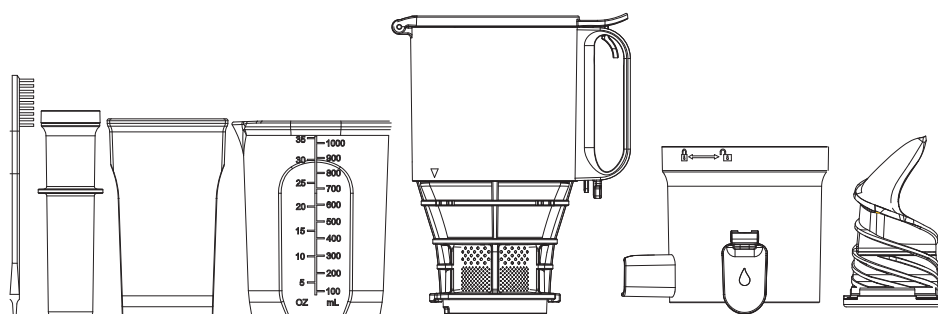
**1.** Open the hopper cover by pressing the lever.

**2.** Disassemble the hopper by turning it counterclockwise until the hopper assembly guide mark ▼ aligns with the chamber assembly guide mark .

**3.** Remove the auger by pulling it upward.

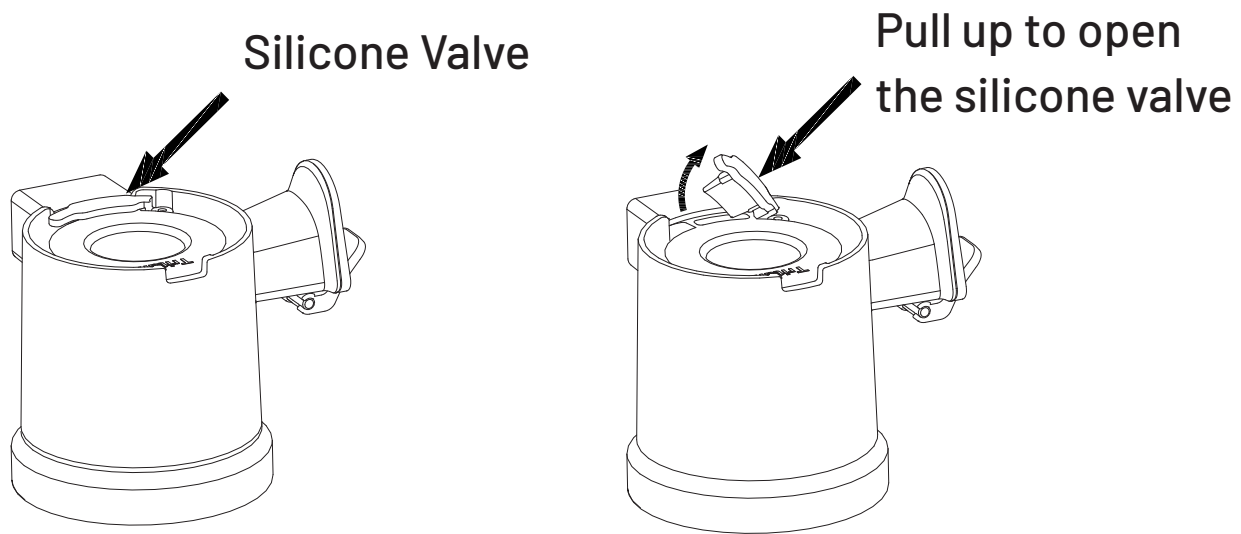
**4.** Remove the chamber by lifting it upward vertically.

**5.** Rinse each part with the cleaning brush. Brush both the inside and outside of each part thoroughly under running water.



### Important Note:

- a. Detach the silicone valve (located at the button) to clean the chamber.
- b. After cleaning, ensure that the valve is properly and tightly closed. Otherwise, juice leakage may occur.



6. Wipe the housing with a damp towel or soft cloth.
  7. After cleaning, allow the parts to air dry completely and store them in a clean, safe place.
- \* Be sure to clean and air-dry the parts thoroughly immediately after use and store them in a clean location.
  - \* If not cleaned promptly, pulp residue may dry and harden on the parts, making it difficult to disassemble or clean later.
  - \* Improper cleaning may also reduce the appliance's performance.
  - \* Do not use steel sponges, abrasives, or other sharp cleaning tools.

## Maintenance

1. Clean and air-dry the appliance completely immediately after use.
2. Before cleaning the product, ensure that the power cord is unplugged.
3. The housing should not be washed with water.
4. **Tip:** Wipe the housing with a damp towel or soft cloth.
5. Clean and air-dry the appliance thoroughly before storing it.

Problem	Solutions
The appliance does not work.	Check if the power cord is properly inserted.
	Check if the hopper is assembled correctly. If the hopper is not locked into place, the appliance will not operate for safety reasons.
	Check if the appliance has been assembled according to the instructions in the manual.
An unusual noise is heard while juicing.	The noise you hear is a natural sound produced when ingredients are being crushed. If the ingredients are hard or tough, such as apples or carrots, the extraction noise may be louder than when juicing softer ingredients. Recommended: To reduce noise, peel the apple before juicing.
The appliance stops during normal operation.	The appliance has been operating for an extended period. The motor is designed to protect itself from overheating.
The chamber shakes during squeezing.	Disconnect the appliance from the power supply for up to 30 minutes to reset. The reset time may be extended if the room temperature is high.
The hopper does not open.	Before disassembling the hopper, open the hopper cover by pressing the lever. For safety reasons, the hopper cannot be disassembled without opening the hopper cover.
Juice leaks through the pulp outlet immediately after the ingredients are inserted.	This is not a product defect, but rather a normal phenomenon. The leakage will stop after a few seconds of operation.
During the initial uses, the motor may emit an unpleasant smell.	It is a normal occurrence. If this issue persists frequently, please contact the authorized service professionals.
Juice flows back into the hopper.	Extract juice with the juice cap open. When juicing with the juice cap closed, the juice may flow back into the hopper. If the contents are not fully discharged even after opening the juice cap, open the hopper cover and empty out the contents.

The auger or accessories are discolored after use.	This is a normal phenomenon caused by specific vegetables, such as carrots.
--	---

## Specifications

Rated Voltage	220-240V
Rated Frequency	50Hz
Motor Power	250W Copper Motor
Rotational Speed	50-80RPM
Noise Level	72dB
Hopper Capacity	1.8L
Juicer Cup Capacity	1L
Pulp Cup Capacity	800ML
Power Plug	UK 3-Pin Plug



## **Warranty**

Products that you buy directly from our **Porodo** website or shop come with a 24-month warranty.

When you buy **Porodo** products from any of our approved sellers, you only get a 12-month warranty. If you want to extend this warranty, go to our website at **porodo.net/warranty** and fill out the form with your information. Don't forget to upload a picture of the product too. After we've checked and accepted your request, we'll send you an email to confirm that your product's warranty has been extended.

For more info, please check:

**porodo.net/warranty**

## **Contact Us**

If you have any questions about this Privacy Policy, please contact us at:

**info@porodo.net**

Website: **porodo.net**

Service Support: **support@porodo.net**

Instagram: **porodo**