

PORODO
LIFESTYLE



Porodo Lifestyle
Sofa and Carpet Spot Cleaner

SKU: PD-LFST036

Table of Contents

Safety Instructions	2
Schematic View	4
Filling the Water Tank	4
Instructions for Use	5
Replacing the Brush	5
Cleaning and Maintenance Guide	6
Dirty Water Tank Maintenance	7
Power Cord and Hose Storage	8
Specifications	8
Troubleshooting	8
Correct Disposal	9
Warranty	9
Contact Us	9

Before using the product, please carefully read this User Manual to guarantee correct usage and keep it secure for future reference.

Safety Instructions

Warning: Unplug the device when not in use and before performing maintenance. When using an electrical appliance, the following precautions should be observed to reduce the risk of fire, electric shock, or injury:

1. Keep away from children and infants.
2. Children should be supervised to ensure they do not play with the product.
3. Keep hair, loose clothing, fingers, and all body parts away from openings and moving parts of the product and its accessories.
4. Unplug the device from the electrical outlet when not in use, before cleaning, maintaining, or servicing the product, and when using accessories with moving parts (e.g., a brush).
5. If the power cord is damaged, it must be replaced by a professional service agent to avoid hazards.
6. Do not pull or carry the device by the power cord, use the cord as a handle, close a door on the cord, or pull the cord around sharp edges.
7. Do not use the device with a damaged cord or plug.
8. Do not run the device over the power cord.
9. Do not leave the product plugged in unattended.
10. Keep the power cord away from hot surfaces.
11. To unplug the device, grasp the plug, not the cord.
12. Do not handle the plug or the device with wet hands.
13. Turn off all controls before unplugging the device.
14. Plastic film can be dangerous. To avoid suffocation, keep it away from children.
15. Use the device only as described in the manual.
16. Use only the manufacturer's recommended accessories.
17. Do not immerse the product in water or any liquid.
18. If the product is not functioning correctly, has been dropped, damaged, left outdoors, or immersed in water, do not attempt to operate it. Have it repaired by an authorized service center.
19. Do not insert any objects into openings.
20. Do not use the product if any opening is blocked; keep it free from dust, lint,

hair, or any other debris that may obstruct airflow.

21. Exercise extra caution when cleaning stairs.

22. Do not use the product to pick up flammable or combustible liquids, such as petroleum, or use it in areas where such liquids may be present.

23. Do not use the product to pick up toxic materials (e.g., chlorine bleach, ammonia, drain cleaners).

24. Do not use the product in an enclosed space filled with vapors from oil-based paints, paint thinners, mothproofing substances, flammable dust, or other explosive or toxic vapors.

25. Do not pick up hard or sharp objects such as glass, nails, screws, coins, etc.

26. Keep the product on a level surface.

27. Do not pick up anything that is burning or smoking, such as cigarettes, matches, or hot ashes.

28. Do not expose the product to rain. Store it indoors.

29. Always connect the product to a properly earthed electrical socket. Do not modify the earthing plug.

30. The liquid must not be directed towards electrical equipment or components.

31. Use only the type and amount of liquids specified in the operations section of this guide.

32. Under the supervision of an adult familiar with the product's operation and understands the hazards involved, this device could be used by children aged 8 years and older as well as persons with reduced physical, sensory, or mental capabilities or lack of experience and knowledge.

33. Cleaning and maintenance should not be carried out by children without supervision.

34. The product is intended to remove dirt by scrubbing. The water tank should not be filled with tap water exceeding 40°C.

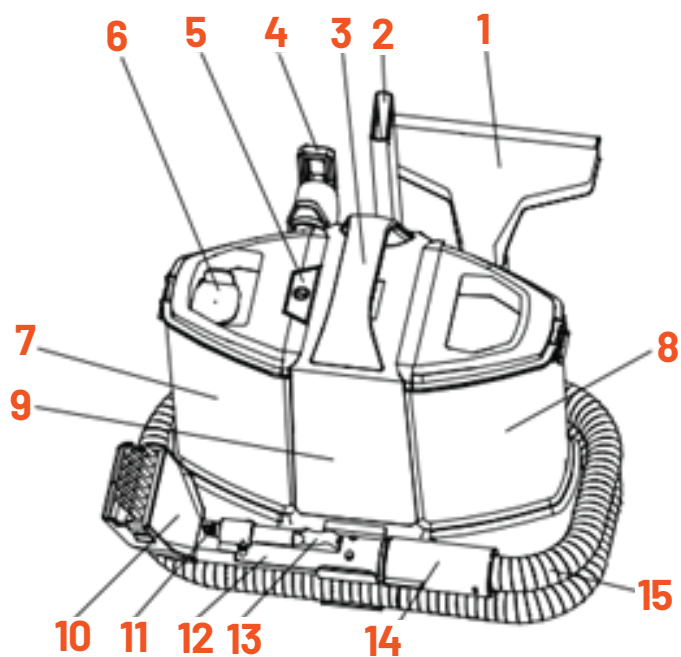
35. Do not use this product on sensitive surfaces like silk, fur, leather, soft clothing, solid wood, or lacquered wood products. Also, avoid using it on easily scratched surfaces, such as floors, table tops, etc.

36. This product is for indoor use only.

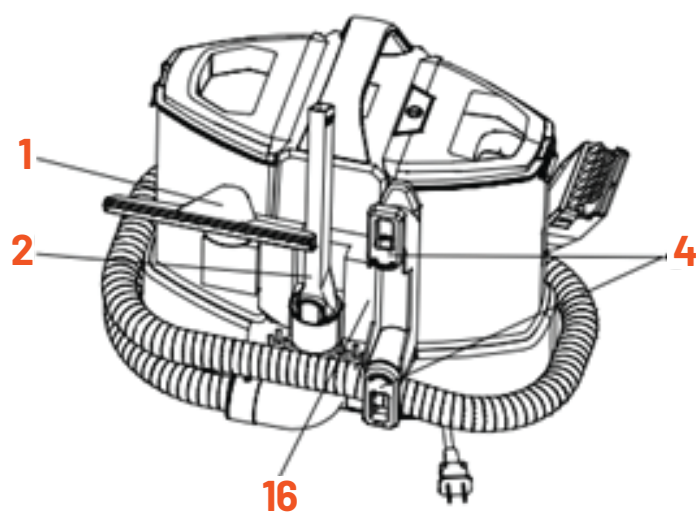
37. Do not sit or lean on the product.

38. When using a new detergent, please ensure that it is initially test on a small area of the invisible part of the fabric.

Schematic View



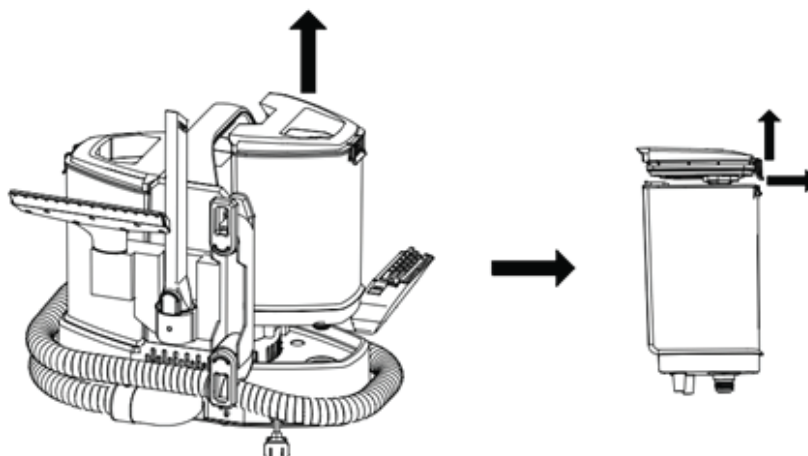
- 1. Glass Cleaning Brush
- 2. Long Suction Brush
- 3. Main Handle
- 4. Power Cord
- 5. Main Power Button
- 6. Water Tank Set
- 7. Water Tank
- 8. Dirty Water Tank



- 9. Main Unit
- 10. Floor Brush
- 11. Water Outlet
- 12. Self-Cleaning Pipe
- 13. Spray Water / Power Button
- 14. Soft Pipe Connector
- 15. Soft Pipe
- 16. Accessory Rack

Filling the Water Tank

To disassemble the clean water tank, lift the clean water tank at an angle to remove it completely. Once removed, open the water tank cover and add water.



Instructions for Use

1. Before using this product, place the machine on a flat surface and connect it to the power supply.
 2. Press the power switch to start the machine. Press the power switch again to turn it off.
 3. Hold the cleaning brush and press the water spray switch located at the bottom of the brush. The brush will continue to spray water.
 4. Release the button to stop the water spray.
 5. Spray water onto the stained area on the surface. After spraying, wipe the area repeatedly with the cleaning brush.
 6. Suck up the stain and waste water into the waste water tank. Repeat this process multiple times to quickly clean the stain.
 7. This product can be used with non-foaming cleaning solutions. These can be mixed with water and added to the clean water tank for improved cleaning results.
- Notice:** When using this product, it is necessary to spray water first and then absorb the water. It is not possible to directly pick up dry debris.

Notes:

1. To avoid blocking the air duct, please remove any large pieces of debris such as paper, packaging film, etc.
2. This machine is designed for cleaning soft surfaces like carpets or furniture.
3. Always ensure that the fabric is suitable for wet cleaning before use.
4. This machine is not recommended for hard surfaces.

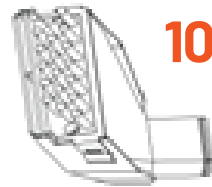
Replacing the Brush

Glass Suction Brush Head: Designed for cleaning glass surfaces and large areas with stains.



Glass Cleaning Brush [1]

Carpet Suction Brush Head: Ideal for cleaning carpets and sofas.



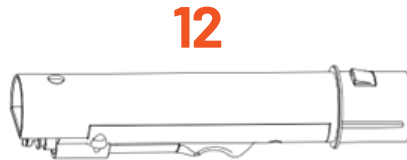
Floor Brush [10]

Long-Flat Crevice Nozzle Brush Head: Suitable for cleaning corners of doors, windows, walls, and for removing dust from sofas, tables, etc.

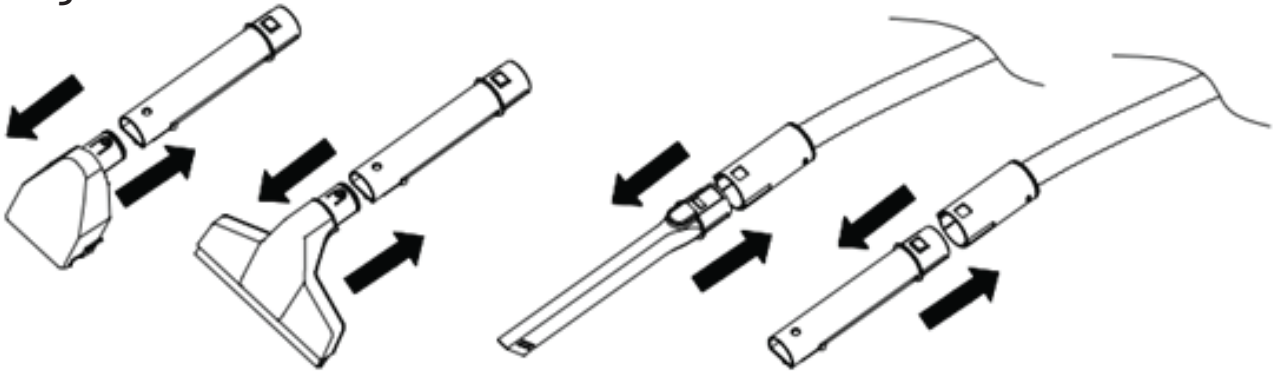


Long Suction Brush [2]

Self-Cleaning Brush: This brush is used for cleaning the internal pipes of the product once cleaning is complete.



Remove the existing cleaning brush as shown and replace it with a wide or self-cleaning brush.



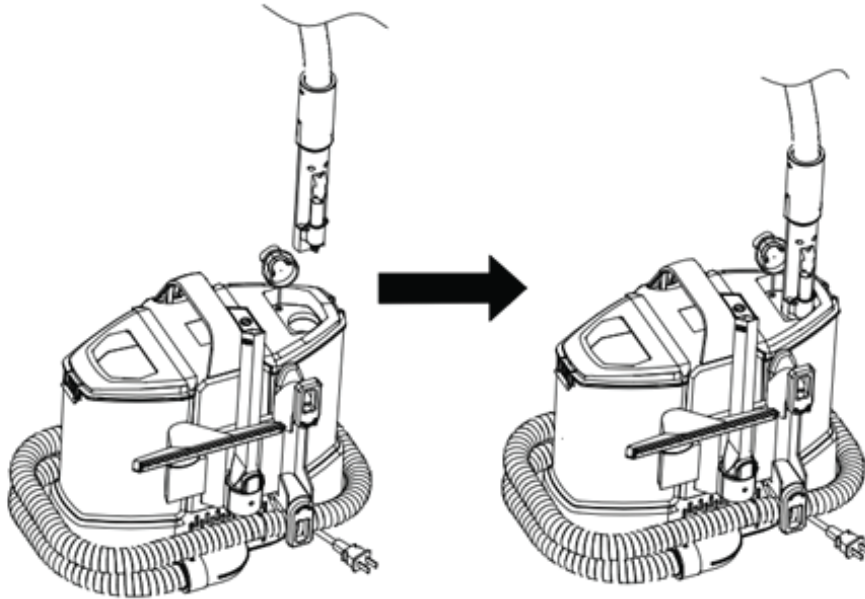
Cleaning and Maintenance Guide

[A] Brush

1. When the Glass Cleaning Brush, Long Suction Brush, or Floor Brush becomes entangled with hair or blocked by dirt, please clean and maintain it promptly.
2. If the brush is entangled with hair, remove the hair or dirt from the bristles.
3. If the brush is blocked, remove the transparent cover at the top of the brush and use a long, narrow tool to clear the air duct inside the handle.

[B] Hose

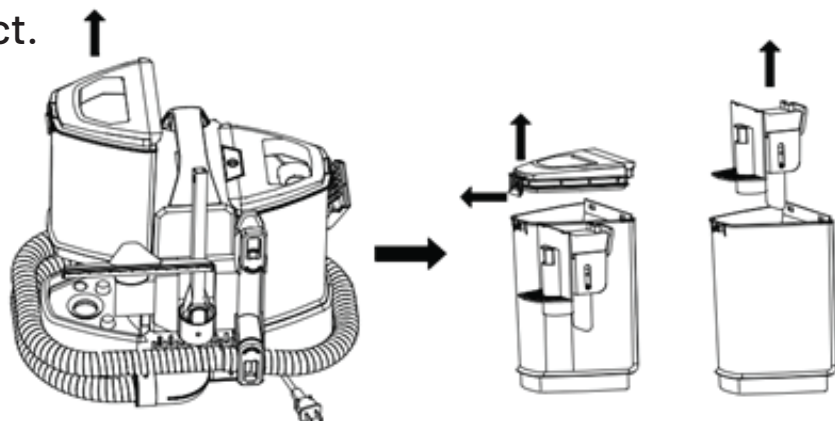
1. After installing the self-cleaning brush, activate the device by pressing the "power switch."
2. Continue pressing the "water spray switch" to clean the internal pipes of the product.



Dirty Water Tank Maintenance

To ensure optimal performance of the product, it is essential to regularly clean the dirty water tank.

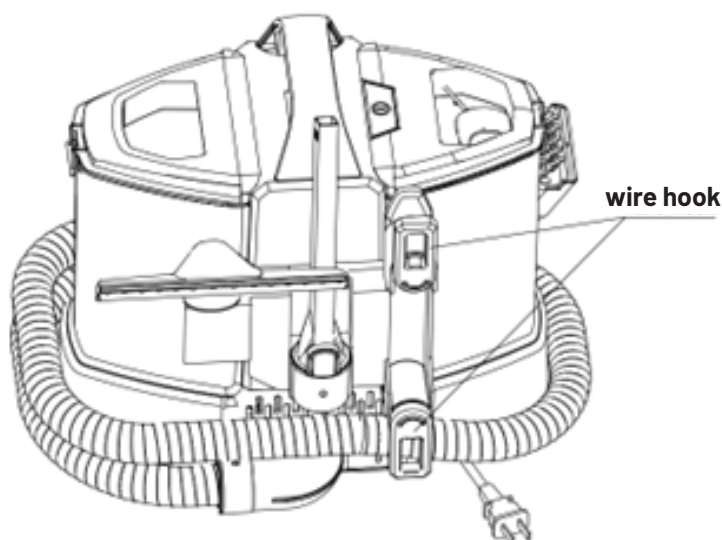
1. Accumulated waste water in the tank can diminish the suction power of the device.
 2. If the water level reaches the maximum, the tank must be cleaned immediately.
 3. After each use, remove the dirty water tank from the unit, dispose of the waste water and debris, and clean the tank thoroughly.
 4. Disassembling the Dirty Water Tank:
 - 4.1 Tilt and lift the dirty water tank to remove it from the unit.
 - 4.2 Remove the tank cover, open it and then clean the inside of the tank.
- Tip:** It is advisable to perform this cleaning task after every use to maintain the efficiency of the product.



Power Cord and Hose Storage

[A] Power Cord Storage: The power cord of this product is long and can be neatly wrapped around the wire hook located at the back of the machine after use.

[B] Hose Storage: After using the product, the hose should be coiled and placed in the designated storage slot at the bottom of the machine.



Specifications

Rated Voltage	100-240V
Rated Frequency	50/60Hz
Suction Power	11000Pa
Noise Level	≤80dB
Motor Speed	3800rpm
Clean Water Tank	1350ml
Dirty Water Tank	600ml
Power Cord	UK 3-Pin Plug
Cord Length	5m
Hose Length	1.3m

Troubleshooting

Problem	Possible Cause	Solution
Water Not Spraying	1. The spray nozzle may be clogged with debris. 2. The clean water tank needs refilling.	1. Remove the nozzle blockage using a fine needle. 2. Refill the clean water tank promptly.
Abnormal Noise	1. The suction port is obstructed by large debris. 2. The motor has malfunctioned and may require servicing.	1. Clear blockages promptly. 2. If the issue persists, contact the service professionals for further assistance.

Weak Suction or No Water Absorption	1. The waste water tank is overfilled and needs to be emptied. 2. Dirt accumulation is obstructing the suction path.	1. Clean the waste water tank regularly to prevent overfilling. 2. Remove the blockage.
Machine Not Operating Properly	The machine is operating in an environment where the temperature is either too high or too low.	Ensure the machine operates within an ambient temperature range of 0°C to 50°C.

Correct Disposal

This product must not be discarded with regular household waste. To avoid potential environmental and health risks due to uncontrolled waste disposal, responsibly recycle it to ensure the sustainable reuse of materials. Disposal of this product should be carried out according to local regulations.

Warranty

Products that you buy directly from our **Porodo** website or shop come with a 24-month warranty.

When you buy **Porodo** products from any of our approved sellers, you only get a 12-month warranty. If you want to extend this warranty, go to our website at **porodo.net/warranty** and fill out the form with your information. Don't forget to upload a picture of the product too. After we've checked and accepted your request, we'll send you an email to confirm that your product's warranty has been extended.

For more info, please check:
porodo.net/warranty

Contact Us

If you have any questions about this Privacy Policy, please contact us at:
info@porodo.net

Website: **porodo.net**

Service Support: **support@porodo.net**

Instagram: **[porodo](https://www.instagram.com/porodo)**