

PORODO



Porodo

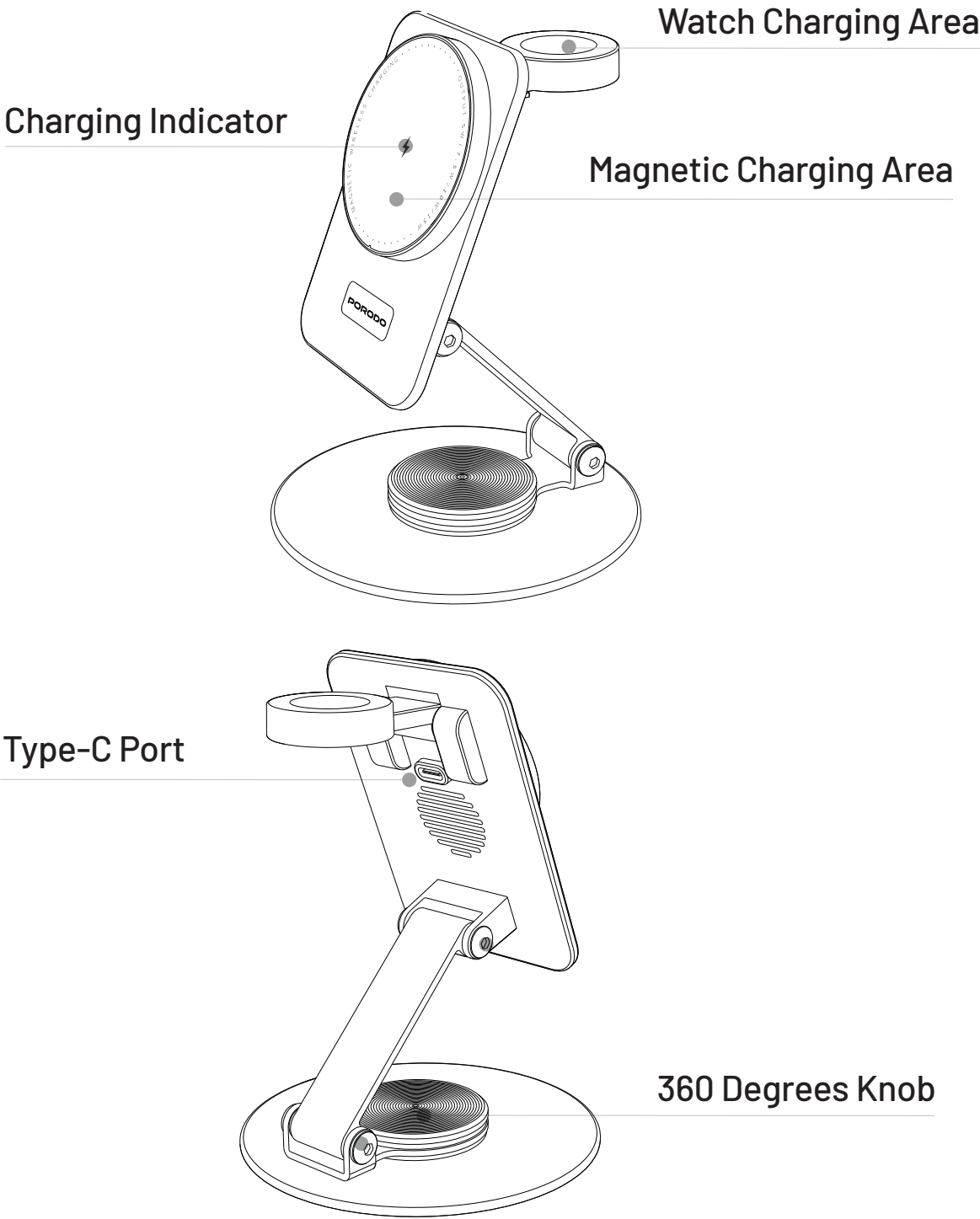
**Wireless Charging
Rotating Stand**

SKU: PD-FWCH035

Table of Contents

Schematic View	2
Specifications	2
Instructions for Use	3
Safety Notice	4
Troubleshooting	4
Disposal	5
Warranty	5
Contact Us	5

Schematic View

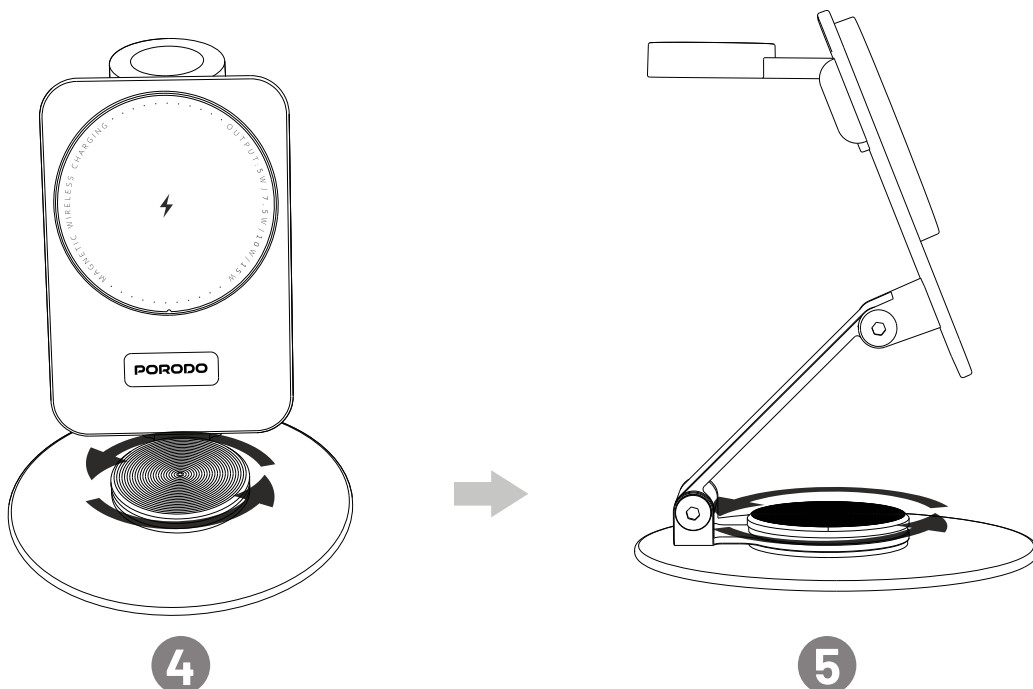
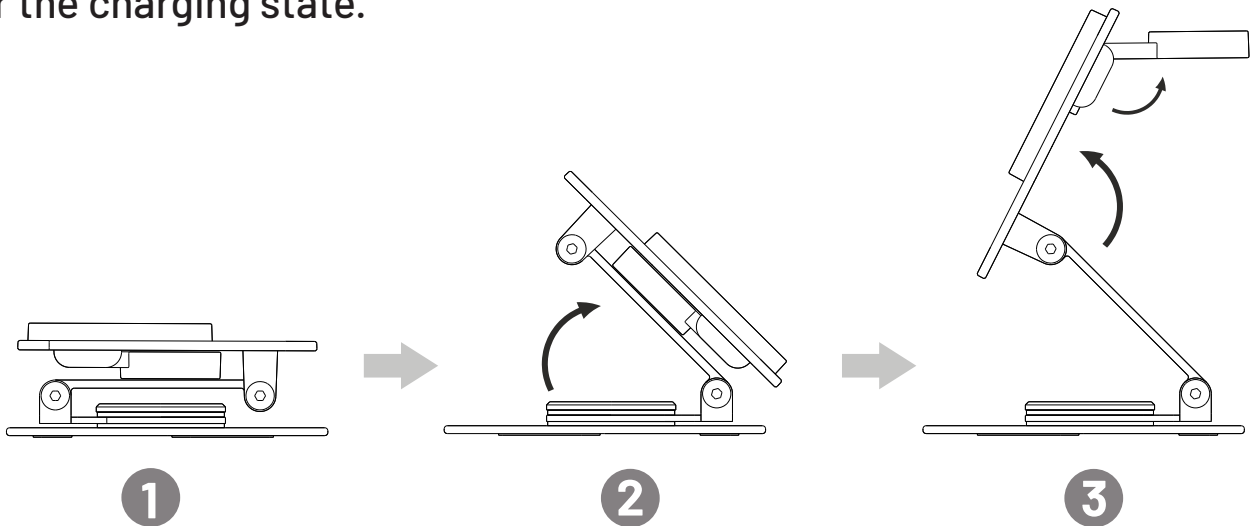


Specifications

Input	9V/2A
Phone Output	5W, 7.5W, 10W, 15W
Watch Output	3W
Earbuds Output	5W
Product Size	36.2×102×102mm
Charging Adapter	18W or Higher

Instructions for Use

1. Follow the steps to open the folding part of the product (Figures 1 to 3).
2. Rotate the upper part of the product 360 degrees to adjust it (Figures 4 and 5).
3. When the power supply is connected, the product will enter the power-on state.
4. Place a mobile phone with MagSafe wireless charging capability close to the magnetic charging area. The magnetic attraction will fix the phone to the product, automatically aligning it with the charging position, and the phone will enter the charging state.
5. Remove the device and restore the product to standby mode.
6. Rotate the watch module, place the watch in the charging position, and it will enter the charging state.



Safety Notice

1. Do not pull the power cord forcefully to avoid damage or detachment.
2. Do not disassemble, or throw the product into fire or water to prevent short circuits or leakage.
3. Avoid using the product in extreme temperatures, high humidity, or corrosive environments to prevent circuit damage and leakage.
4. Keep away from children, infants, and pets.
5. Do not expose the product to water.
6. Do not place metal objects on the charging area.

Troubleshooting

1. Charging is relatively slow.

The wireless charging current allowed by the mobile phone or external receiving coil may vary. If a power-hungry application is running during charging, it is recommended to close or reduce the use of the application.

2. Phone charging is intermittent.

If the charging current is insufficient, use a charger (adapter) with a power output of 9V/2A or QC2.0 or higher.

3. Charging causes overheating.

It is normal for the receiving coil or charging plate to heat up during wireless charging. Adjusting the charging position may help reduce heat.

4. Charger does not work.

Do not place metal objects or magnetic cards in the charging area. If the product overheats and stops working, remove the phone, allow it to cool down, and then try charging again.

5. Your phone or watch won't charge.

If the receiving coil of the phone or watch is faulty or the charging position is misaligned, it is recommended to replace or repair the receiving coil.

Disposal

This product must not be disposed of as unsorted household waste. It is important to separate such waste for proper treatment and recycling, in compliance with local waste management regulations.

Warranty

Products that you buy directly from our **Porodo** website or shop come with a 24-month warranty.

When you buy **Porodo** products from any of our approved sellers, you only get a 12-month warranty. If you want to extend this warranty, go to our website at **porodo.net/warranty** and fill out the form with your information. Don't forget to upload a picture of the product too. After we've checked and accepted your request, we'll send you an email to confirm that your product's warranty has been extended.

For more info, please check:
porodo.net/warranty

Contact Us

If you have any questions about this Privacy Policy, please contact us at:
info@porodo.net

Website: **porodo.net**

Service Support: **support@porodo.net**

Instagram: **[porodo](https://www.instagram.com/porodo)**