

LEVEL



Levelo

QUANTUM 3 In 1 Wireless Charger

SKU: LVL-QNTM-BK

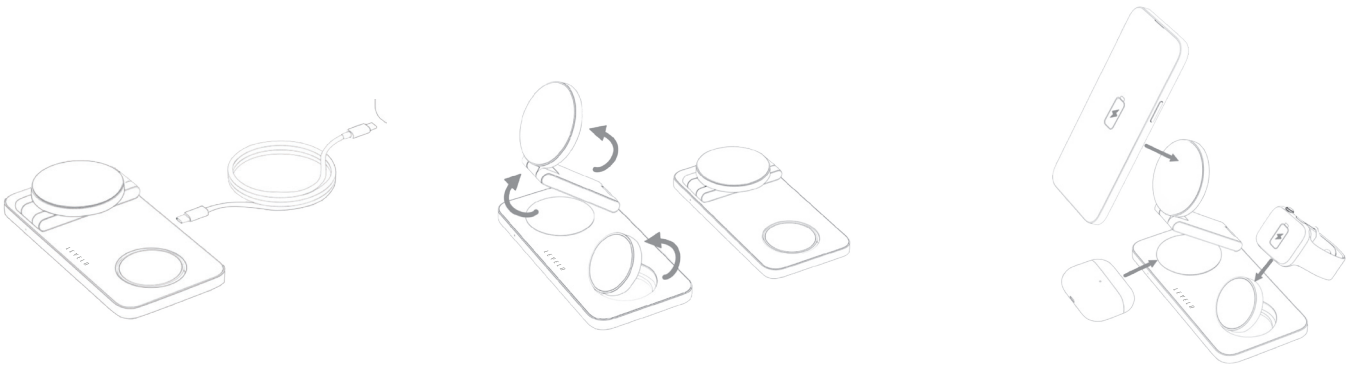


Table of Contents

Setup Guide	2
Indicator Light Guide	2
MagSafe Compatibility	3
Compatible Devices	3
Specifications	4
Package Contents	4
Safety Instructions	4
FCC Interference Statement	5
Disposal	6
Warranty	7
Contact Us	7

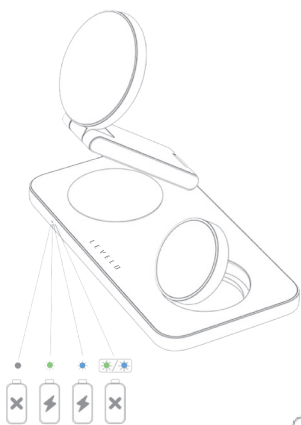
Setup Guide

- 1. Turn on the power:** Connect the cable to the power adapter, then plug the adapter into a wall outlet to supply power to the device.
- 2. Fold up and adjust the viewing angle:** Lift the watch charging panel and adjust it to the angle that best suits your needs, ensuring comfortable and convenient access for charging your watch.
- 3. Place Phone, Watch, or Earbuds to Charge:** Simply place your devices on their respective charging areas for efficient and organized charging.



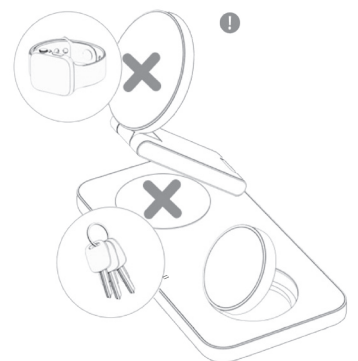
Indicator Light Guide

- 1. Only charge Apple Watch on the designated spot.**
- 2. Do not place foreign objects on the charging area.**



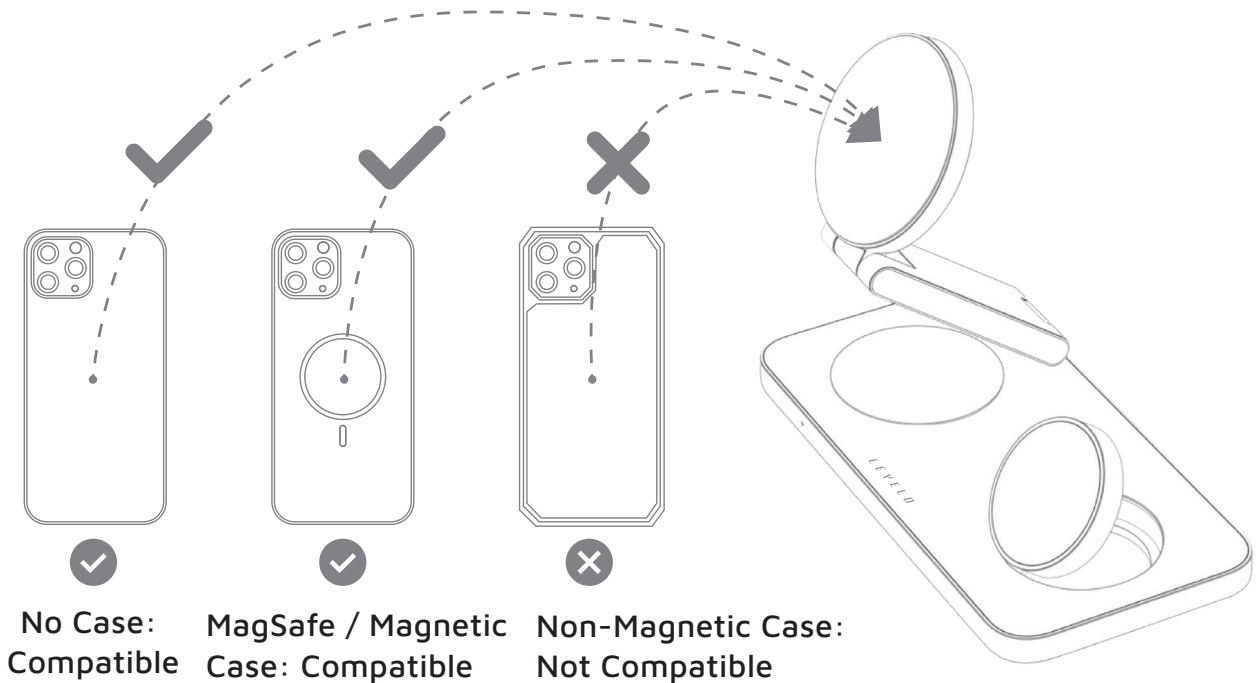
Indicator Light Status:

- Power Off: No light
- Power On: Green light
- Phone Charging: Blue light
- Error or Foreign Object Detection (FOD): Blue and green lights flashing alternately



MagSafe Compatibility

To ensure MagSafe compatibility, your phone must be from the iPhone 12 series or later. You can use your phone either bare or with a MagSafe-compatible magnetic case. Please note, non-magnetic cases will interfere with the magnetic connection, preventing your phone from staying attached to the MagSafe charging pad.



MagSafe Compatibility

Smartphones: iPhone 16–12 series, iPhone 11–8 series (MagSafe protective cases required)

Apple Watches: Series 1 ,2 ,3 ,4 ,5 ,6 ,7 ,8 ,9 ,10, Ultra, SE

Earbuds: Wireless earbuds such as AirPods Pro, AirPods with wireless charging case, and other Qi-compatible earbuds.

Specifications

Type-C Input	9V/2A, 9V/2.7A, 12V/2A
Phone Output	5W, 7.5W, 10W, 15W
Airpods Output	5W
iWatch Output	3W
Product Size	29.6x150x75mm
Material	ABS + Zinc

Package Contents

1. Wireless Charger
2. Charging Cable



Safety Instructions

Warning: Failure to follow these instructions could result in fire, electric shock, injury, or damage to the user, product, or property.

1. Connect the wireless charger to a nearby power outlet that is easily accessible for disconnection.
2. Use indoors in a dry location, avoiding charging near heat or humidity sources.
3. Keep the wireless charger and power supply away from liquids or moisture.

4. Unplug the wireless charger when not in use for long periods of time.
5. Do not store your device in extremely hot or cold locations. It is recommended to use your device at room temperature.
6. Do not use if visible defects are present on the wireless charger or power supply.
7. Do not attempt to service, modify, or disassemble the wireless charger or power supply.
8. Wireless charging power rates are regulated by the wireless charging device receiving power. These can be influenced by factors like proprietary charging protocols, ambient temperature, current battery percentage, and age of the device being charged.
9. Avoid using the product in humid, dusty, or high-temperature environments.
10. When not in use for long periods, unplug the power supply and cut off the power.
11. Ensure proper alignment of devices on the charging areas to avoid overheating and inefficiencies.

Caution: If you experience issues with the wireless charger, discontinue use, unplug the power supply from the AC socket, and contact a service center.

FCC Interference Statement

This equipment has been tested and found to comply with the limits for a Class B digital device, as outlined in Part 15 of the FCC Rules. These limits are designed to provide reasonable protection against harmful interference in a residential installation. This equipment generates, uses, and can radiate radio frequency energy, and if not installed and used in accordance with the instructions, may cause harmful interference to radio communications. However, there is no guarantee that interference will not occur in a particular installation.