

LèPRESSO



LePresso

Conical Burr Grinder

SKU: LPCFFM0028

Table of Contents

Safety Instructions	2
Warning	3
Schematic View	4
Specifications	5
Before the First Use	5
Instructions for Use	5
Assembly Guide	6
[A] Bean Hopper Assembly	7
[B] Remove the Bean Hopper	7
Grind Setting	7
Control Panel Operation	8
Cleaning	9
Maintenance	10
Troubleshooting	11
Disposal	11
Warranty	12
Contact Us	12

Safety Instructions

When using electrical appliances, always follow these basic safety precautions:

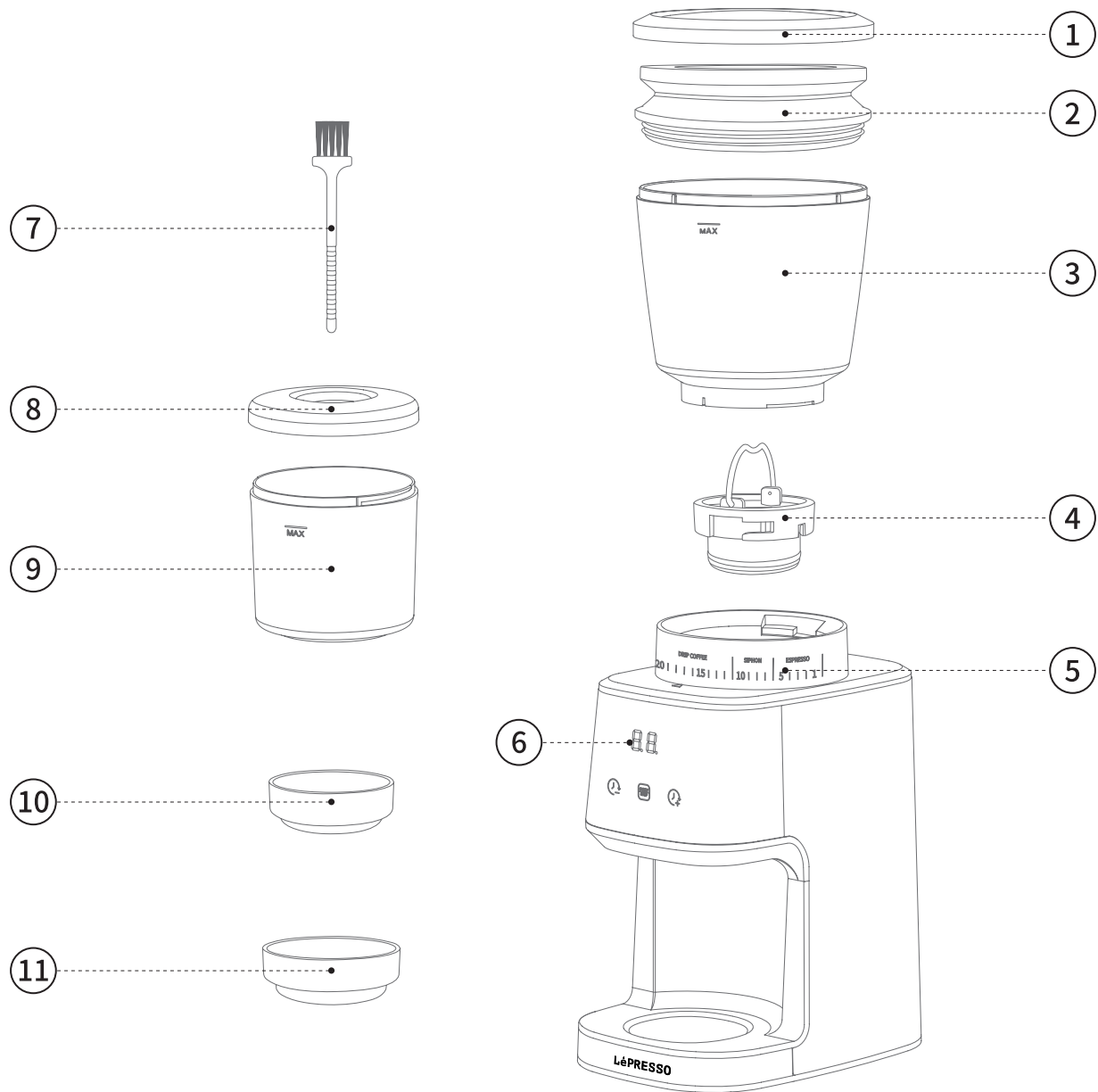
- 1.** Read all instructions carefully.
- 2.** Keep the appliance and its power cord away from children, infants, and pets.
- 3.** To protect against fire, electric shock, and injury to persons, do not immerse the cord, plugs, or appliance in water or any other liquid.
- 4.** Unplug from the outlet when not in use, before attaching or detaching parts, and before cleaning. To unplug, hold the plug and pull from the outlet. Never pull the cord.
- 5.** Avoid contact with moving parts.
- 6.** To reduce the risk of severe injury to persons or damage to the appliance, keep hands and utensils away from the coffee bean container while grinding, and ensure the appliance is unplugged.
- 7.** Do not operate the appliance with a damaged cord or plug, or if the appliance malfunctions, has been dropped, or damaged in any way. In such cases, return the appliance to the nearest approved Service Center for examination, repair, or electrical or mechanical adjustment.
- 8.** The use of attachments not recommended or sold by the manufacturer may cause fire, electric shock, or injuries.
- 9.** Do not use the appliance outdoors.
- 10.** Ensure the cord does not hang over the edge of a table or counter, or come into contact with hot surfaces, including stoves.
- 11.** Inspect the coffee bean container for any foreign objects before use.
- 12.** Always operate the burr grinder with the lid securely in place.
- 13.** Do not place the appliance near or on a hot gas or electric burner, or inside a heated oven.

14. This product is intended for household use only. Any commercial use or failure to follow the instructions may result in injury or damage.
15. This appliance is designed solely for grinding roasted coffee beans. Do not use it for any other substances such as hard seeds, spices, or nuts.
16. Do not exceed the maximum mark in the grinding chamber.
17. Each appliance undergoes rigorous inspection and strict quality control standards during production and is tested with coffee beans, which may leave slight traces of use or residual grounds. Random tests on machines may show slight marks or coffee residue prior to use.
18. This appliance must not be used by individuals with reduced physical, sensory, or mental abilities, or by those lacking experience and knowledge, unless they have received supervision or instructions.
19. Children must not play with the appliance.
20. **Warning:** Turn off the appliance and disconnect it from the power supply before changing accessories or handling moving parts.
21. Always disconnect the appliance from the power supply if left unattended, and before assembling, disassembling, or cleaning.
22. Cleaning and maintenance must not be carried out by children unless they are at least 8 years old and supervised.
23. Keep this manual secure for future reference.

Warning

1. This appliance is intended for household use only.
2. Any servicing beyond cleaning and user maintenance must be performed by an authorized Service Center.
3. Do not immerse the appliance in water.
4. To prevent the risk of fire or electric shock, do not dismantle the appliance.
5. **Danger:** Avoid contact with moving parts while the device is operational.
6. Do not neglect any safety interlock mechanisms.

Schematic View



1. Bean Hopper Lid

2. Coffee Grounds Residual Cleaner

3. Bean Hopper

4. Removable Upper Conical Burr

5. Grinding Settings

6. Control Panel

7. Cleaning Brush

8. Grinding Chamber Lid

9. Grinding Chamber

10. Coffee Dosing Ring

Compatible with 51mm Portafilter

11. Coffee Dosing Ring

Compatible with 58mm Portafilter

Specifications

Rated Power	165W
Rated Voltage	240-220V
Rated Frequency	60-50Hz
Bean Hopper Capacity	275g
Chamber Capacity	99g
Burr Size	40mm
Power Cord	UK 3-Pin Plug
Dimensions	124×182×318mm

Before the First Use

1. Before using the coffee grinder, wipe the housing and bean hopper with a clean, damp cloth.
2. Wash the grinding chamber and the grinding chamber lid in hot, soapy water. Rinse thoroughly and allow them to dry completely.

Instructions for Use

1. Assemble the bean hopper.
2. Place the grinding chamber.
3. Fill coffee beans into the bean hopper.
4. Close the lid.
5. Set the coffee grinder size.

The coffee grinder offers 31 grind size options. To adjust the grind size, rotate the bean hopper and select from fine to coarse, depending on the type of coffee desired.

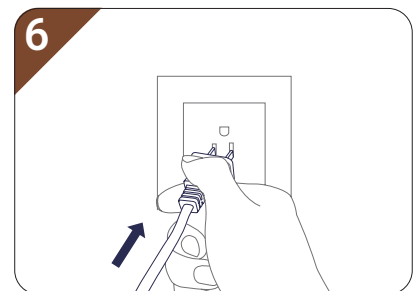
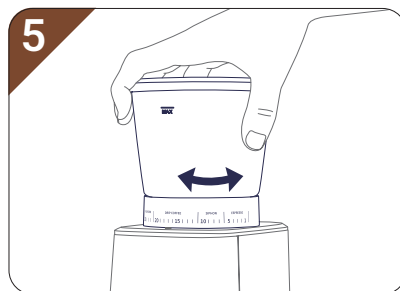
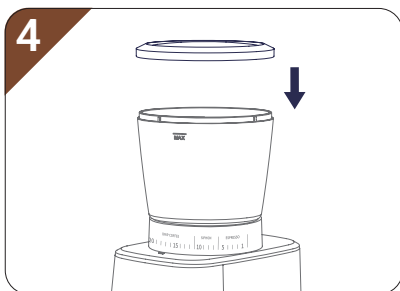
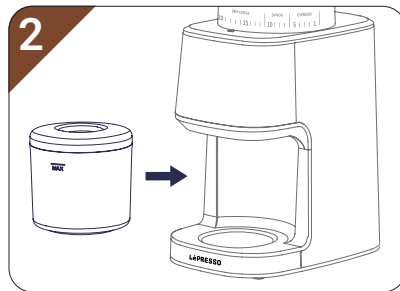
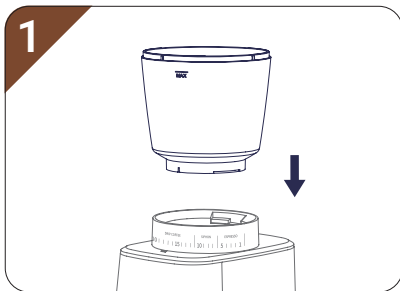
6. Plug the grinder into a power outlet.

Once the system is powered on, a buzzer will sound, and the screen will display "10". The standby mode will activate, and the default working time is set to 10 seconds as the three indicator light are on.

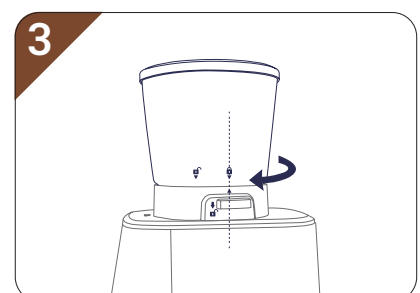
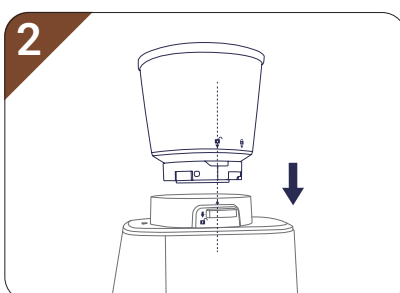
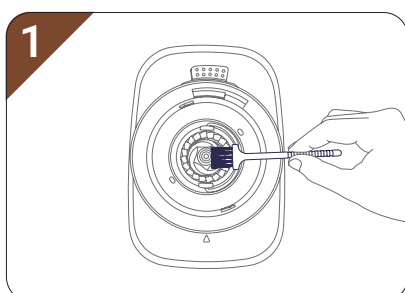
7. Set the grinding time.

8. Press the "Start/Stop" button to begin grinding.





Caution: In power-saving mode, if there is no operation for over 3 minutes, the unit will enter power-saving mode automatically. Press any button to reactivate the unit.

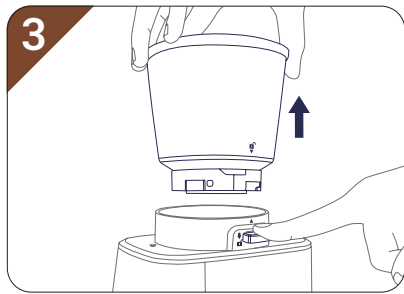
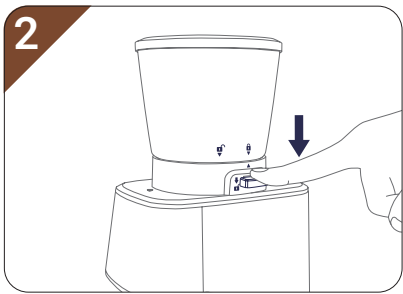
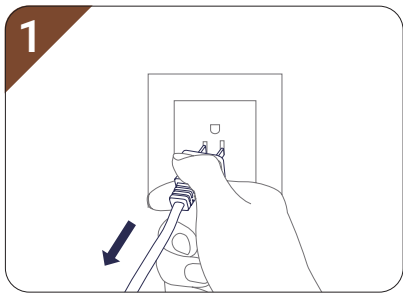


Assembly Guide






[A] Bean Hopper Assembly

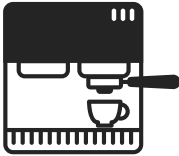




- 1. Ensure the top part of the conical burr is clear. If it is not, use the provided brush to clean the top part of the burr.
 - 2. Align the unlock icon  on the base with the arrow  on the bean hopper.
 - 3. Turn the bean hopper clockwise until the lock icon  aligns with the arrow  .
- Note:** If the bean hopper is not assembled correctly, the coffee grinder will not function.



[B] Remove the Bean Hopper

- 1. Ensure the coffee grinder is unplugged.
- 2. Press the bean hopper release lever located opposite  the grinding size markings.
- 3. Turn the bean hopper counterclockwise until the unlock icon  aligns with the arrow  , then lift it up.

Grind Setting

	Espresso	Siphon	Drip Coffee	Pour Over	French Press
Coffee Maker Type					
Grind Size	Fine	Middle	Middle	Middle Coarse	Coarse
Grind Setting	1-5	6-10	11-20	17-25	26-31

Control Panel Operation

This unit has 3 buttons:

1. Time "-" button  : Reduce mode.
2. Start/Stop button  : Pulse mode.
3. Time "+" button  : Incremental mode.

[A] Time "-" Button

1. Use this button to reduce the selected time.
2. For times between 40 seconds and 10 seconds, each short press reduces the time by 1 second. The display will update as follows:
38 ,39 ,40... down to 10 seconds.
3. For times between 10 seconds and 1 second, each short press reduces the time by 0.1 seconds. The display will update as follows: 9.8 ,9.9 ,10.0... down to 1.0. There is no further reduction beyond 1 second.
4. Log-pressing this button decreases the time more quickly. The display shows content with a short press.

[B] Time "+" Button

1. For times between 10 seconds and 40 seconds, each short press increases the time by 1 second. The display will update as follows:
12 ,11 ,10... up to 40. The display does not cycle beyond 40 seconds.
2. For times between 1 second and 10 seconds, each short press increases the time by 0.1 seconds. The display will update as follows: 1.2 ,1.1 ,1.0... up to 9.9 ,9.8, and 10.0.
3. A long press will increase the time more quickly. The display shows content incrementally with a short press.





[C] Start/Stop Button

1. After setting the "Timer" button, press the "Start/Stop" button to begin grinding.
2. To stop grinding during operation, press the "Start/Stop" button again.

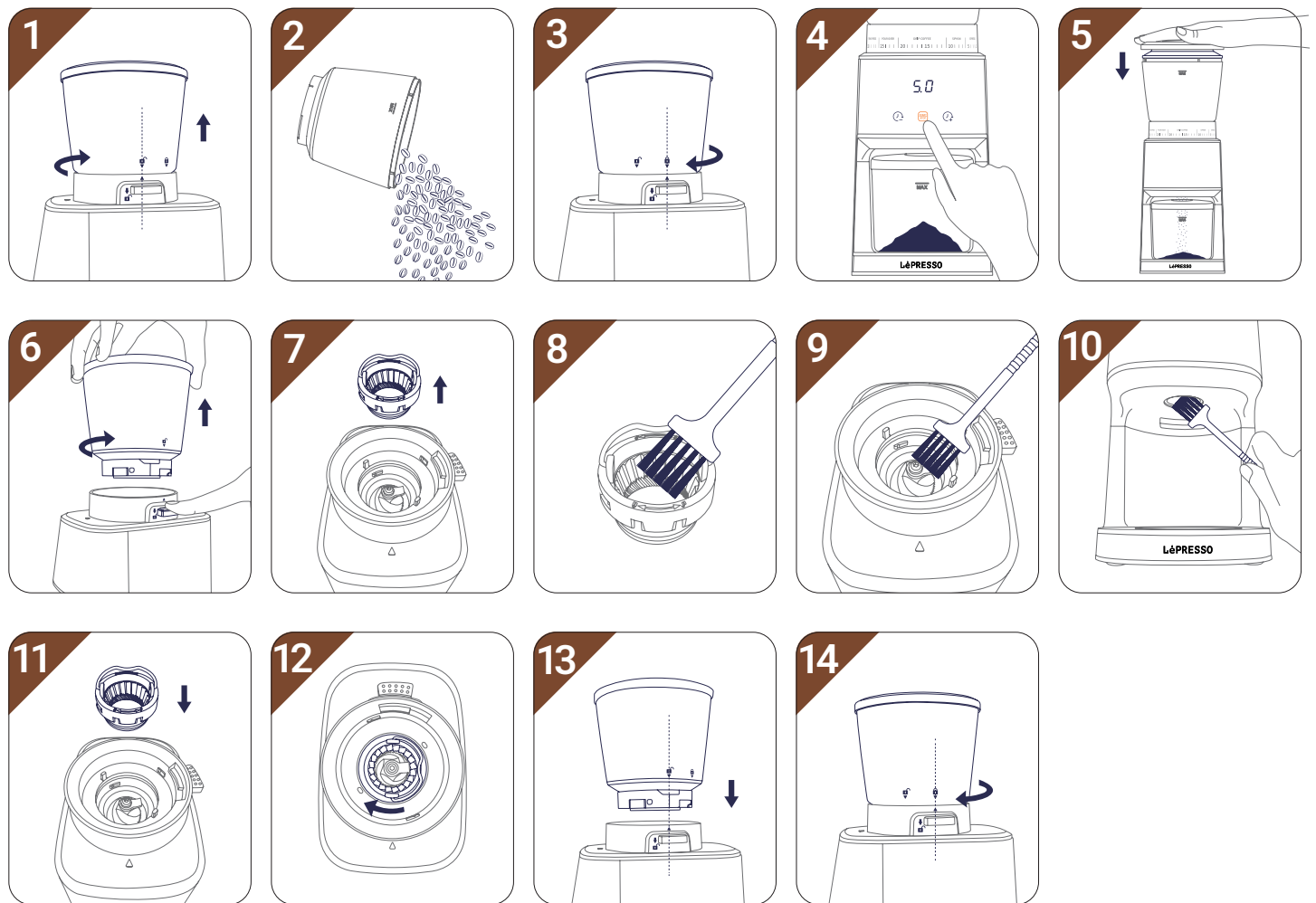
[D] Pulse Working Mode

1. Press and hold the "Start/Stop" button  to activate the pulse working mode.
2. The grinder will run as long as the button is held. The screen will display the working time (e.g., 3, 2, 1...).
3. The maximum grinding time in this mode is 40 seconds.

[E] Buzzer Control

1. To turn off the buzzer: Press and hold the "Time Minus" button  and "Time Plus" button . The screen will display **0F**.
2. To turn on the buzzer: Press and hold the "Time Minus" button  and "Time Plus" button . The screen will display **07**.

Cleaning



Regular cleaning ensures consistent grinding results, which is especially important.

1. Unlock the bean hopper.
2. Remove the beans.
3. Lock the bean hopper.
4. Run the grinder until it is empty.
5. Press the coffee grounds residual cleaner.
6. Remove the bean hopper.
7. Remove the upper burr.
8. Clean the upper burr using the cleaning brush.
9. Clean the lower burr using the cleaning brush.
10. Clean the grinder outlet with the brush.
11. Push the upper burr firmly into position.
12. Lock the upper burr.
13. Align the bean hopper into position.
14. Lock the bean hopper.

Maintenance

1. To preserve your coffee's aroma and prevent degradation of ground coffee, empty the ground coffee container after each use.
2. Always unplug the appliance from the power outlet before cleaning.
3. Never immerse the grinder, power cord, or plug in water or place them under running water.
4. Avoid using strong detergents or abrasive pads to clean the appliance.
5. Wash the lids and the ground coffee holder in warm, soapy water.
6. To remove the upper burr, hold it firmly, turn it counterclockwise, and lift it vertically to detach.
7. Clean the upper burr using the provided cleaning brush.
8. Gently clean the inside of the coffee bean container with a damp cloth.
9. To reassemble the upper burr, insert it into position and turn it clockwise until secure.

Note: Ensure that residual coffee and grounds in the lower burr are cleared for proper alignment.

Troubleshooting

Displayed Code	Description	Solution
E1	The bean hopper is missing or not securely connected.	Assemble the bean hopper or tighten it until the micro switch is engaged. Once the bean hopper is properly secured, the error code E1 will disappear from the display.
	Clogging has occurred due to overfilling the grinding chamber with coffee grounds.	Remove the grinding chamber, empty the coffee grounds, and restart the unit.
E2	The unit has automatically powered off after four continuous operation cycles to prevent damage.	Unplug the power cord, allow the unit to cool down for 10 minutes, and then restart.
	The motor is overheating.	

Disposal

This product should not be disposed of with regular household waste. To prevent potential harm to the environment or human health caused by improper waste disposal, it should be recycled responsibly.

Warranty

Products that you buy directly from our **LePresso** website or shop come with a 24-month warranty.

The 24-month warranty applies to products purchased directly from our **LePresso** website or store. If **LePresso** products are bought from any of our verified retailers, then the product is eligible for only a 12-month warranty. To extend your product's warranty, visit our website **<https://www.lepresso.com/warranty>** and fill in your details in the provided form along with an uploaded picture of the product to process your request. Once approved, you will receive a confirmation email of the extended product warranty. Upload the required information within 48 hours of purchase to be eligible for a 24-month warranty period.

For more info, please check:

<https://www.lepresso.com/warranty>

Contact Us

If you have any questions or concerns about our Shipping and Returns Policy, please contact us at: **info@lepresso.com**

Website: **<https://www.lepresso.com/>**

Instagram: **[lepresso_official](#)**