

LéPRESSO



LePresso

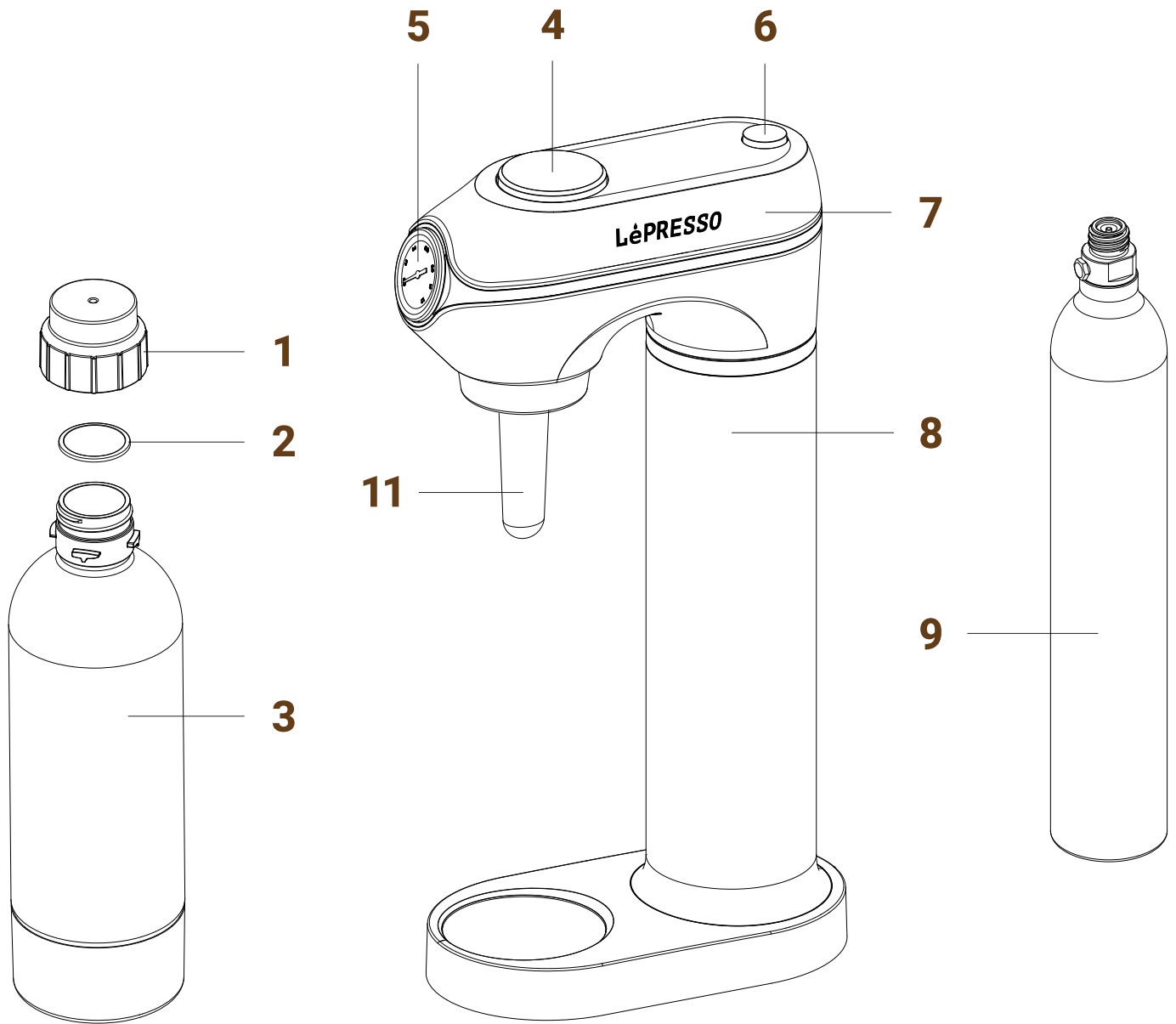
**Carbonator Instant Sparkling
Water Machine with
Pressure Gauge**

SKU: LPCFFM0019

Table of Contents

Schematic View	2
Safety Precautions	3
Instructions for Use	3
Warning	6
Using the Bottle	6
Cleaning Instructions	7
Recycling	7
Warranty	8
Contact Us	8

Schematic View



1. Bottle Cap

2. Sealing Ring

3. 1L PET Bottle

4. Carbonating Button

5. Pressure Gauge

6. Exhaust Button

7. Upper Housing

8. Lower Housing

9. CO2 Cylinder (Sold Separately)

Safety Precautions

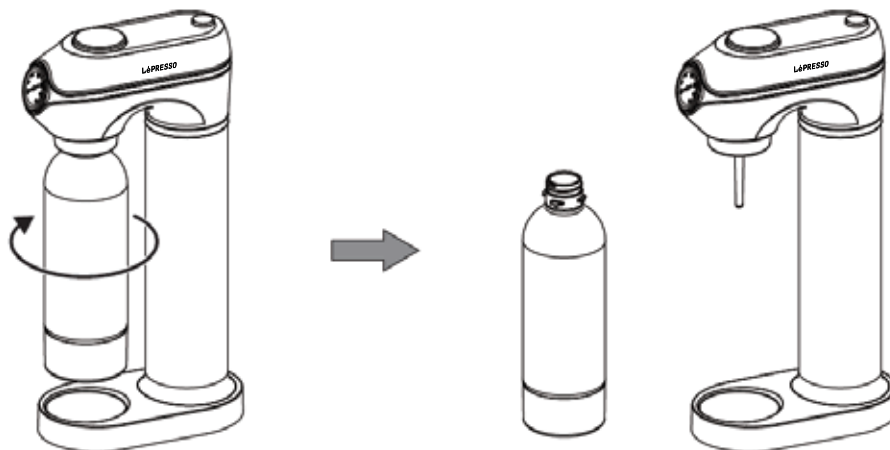
Before using your Sparkling Water Maker, it is crucial to read and understand all operating instructions and safety information to avoid personal injury and damage to your appliance.

1. Never carbonate an empty bottle.
2. Ensure the PET bottle is securely in place before operating the machine.
3. The PET bottle is designed to last for two years. However, it is recommended to replace it annually.
4. Do NOT clean this appliance in a dishwasher.
5. Please inspect the machine and its accessories (carbon dioxide cylinder, PET bottle, etc.) for any damage or defects before use.
6. Do not use the product or any related accessories if they have not been repaired after sustaining damage.
7. Do not attempt to repair or modify the products and accessories on your own. Maintenance and repairs must only be performed by authorized personnel.
8. Always use the original accessories provided or recommended by the manufacturer to ensure safety.

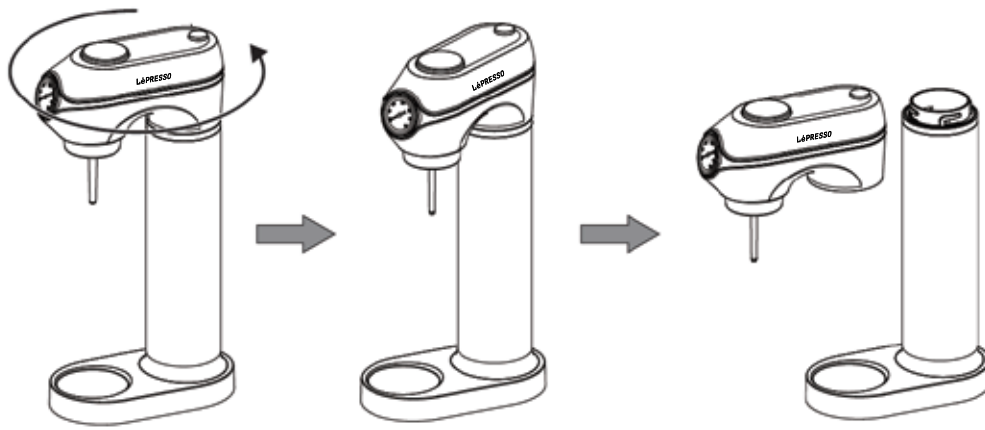
Warning: Keep away from children and infants.

Instructions for Use

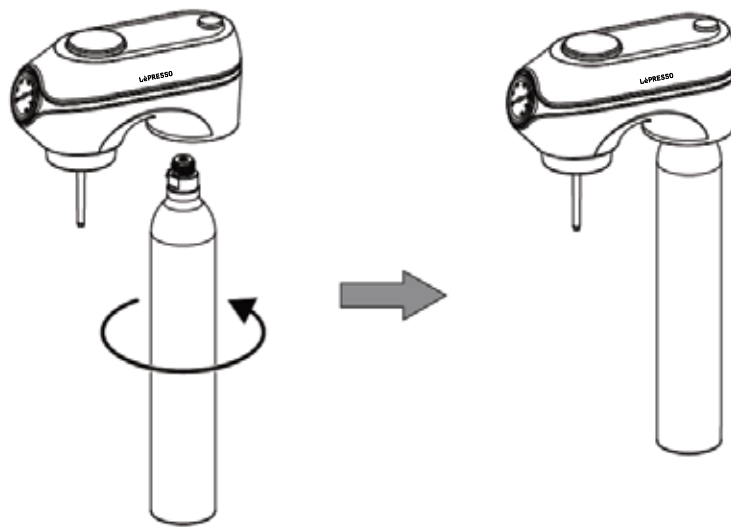
1. Unscrew the PET bottle from the Soda Maker by turning it clockwise.



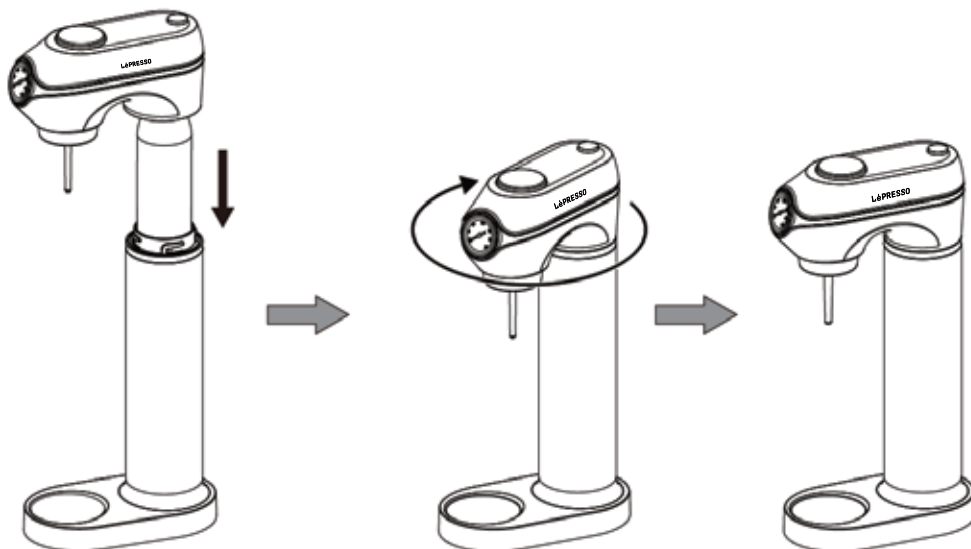
2. Rotate the upper housing counterclockwise to unscrew and remove it.



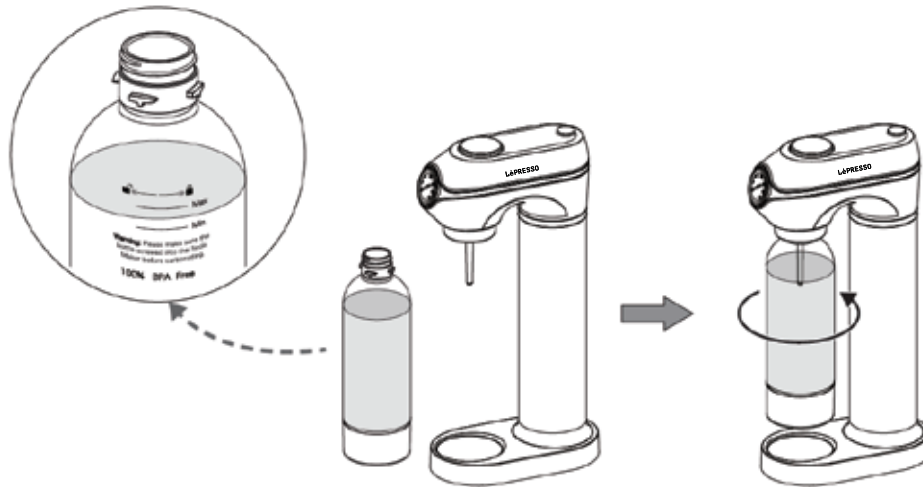
3. First, remove the valve seal and cap from the CO2 cylinder. Insert the cylinder into the upper housing and securely screw it into place within the cylinder holder.



4. Align the upper housing with the lower housing and twist to secure them together



5. Before first use, rinse the bottle thoroughly. Fill the PET bottle to the designated fill line, indicated between the Min and Max markers. Securely attach the PET bottle to the bottle holder located on the upper housing.



6. Press and hold the Carbonating Button until a loud buzz is heard. Check the pressure gauge for the indicated level.



7. Press the Exhaust Button to release excess CO₂ until the pressure gauge reads zero.



8. Detach the PET bottle from the machine.

Warning

- 1. Do not position the device near heat sources, such as stoves or water heaters.**
- 2. Avoid exposing it to direct sunlight.**
- 3. Refrain from submerging the machine in water or rinsing it while in operation.**
- 4. The machine should only be operated when the PET bottle is filled with water.**
- 5. Be cautious as the carbon dioxide cylinder contains pressurized gas.**

Using the Bottle

- 1. Only use supplied bottles to ensure safety, proper function. The bottles from other brands may lead to malfunctions and safety risks.**
- 2. Do not use a PET bottle in environments where the temperature drops below 1°C, and avoid freezing the bottle.**
- 3. Never operate the machine with an empty bottle.**
- 4. Do not use the PET bottle if it is deformed, scratched, or past its expiration date. Replace it with a new bottle from the same brand.**
- 5. Store the bottle in a cool, dry place away from heat sources such as sunlight, stoves, or heaters. Do not expose to temperatures above 40°C.**
- 6. If the bottle is cooler than room temperature, allow it to reach ambient temperature naturally before use. Do not attempt to heat it.**
- 7. If the bottle is warmer than room temperature, allow it to cool in the room. Do not place it in the freezer.**
- 8. If the bottle is frozen, avoid contact with skin to prevent frostbite.**

Cleaning Instructions

1. Wipe the head of the machine with a damp cloth. Use only mild detergents and avoid any corrosive cleaning agents.
 2. Regularly clean the bottle with water temperature below 40°C.
 3. If the bottle will not be used for a short period, leave the cap off to ensure the interior dries completely.
 4. The environment temperature for storing the bottle should not exceed 40°C.
 5. It is recommended to wash the interior of the bottle with clean water and dry it thoroughly after each use.
 6. When making sparkling water, you may add flavoring ingredients to the water. However, ensure that the bottle is rinsed and emptied promptly after use to prevent any potential clogging from residues.
 7. Avoid using flavoring ingredients with large particles or highly viscous liquids, as these may create excessive foam when mixed with CO₂.
- Note:** Release the pressure slowly to prevent foam from spilling.

Recycling

The packaging material is recyclable. Please direct it to the appropriate recycling center according to the local regulations for recycling.

Warranty

Products that you buy directly from our **LePresso** website or shop come with a 24-month warranty.

The 24-month warranty applies to products purchased directly from our **LePresso** website or store. If **LePresso** products are bought from any of our verified retailers, then the product is eligible for only a 12-month warranty. To extend your product's warranty, visit our website [**https://www.lepresso.com/warranty**](https://www.lepresso.com/warranty) and fill in your details in the provided form along with an uploaded picture of the product to process your request. Once approved, you will receive a confirmation email of the extended product warranty. Upload the required information within 48 hours of purchase to be eligible for a 24-month warranty period.

For more info, please check:

[**https://www.lepresso.com/warranty**](https://www.lepresso.com/warranty)

Contact Us

If you have any questions or concerns about our Shipping and Returns Policy, please contact us at: [**info@lepresso.com**](mailto:info@lepresso.com)

Website: [**https://www.lepresso.com/**](https://www.lepresso.com/)

Instagram: [**lepresso_official**](#)