

LèPRESSO



LePresso

**Automatic Capsule Coffee Maker
with 30s Heating for
Precision Brewing**

SKU: LPCFFM0016

Table of Contents

Safety Instructions	2
Specifications	4
Schematic View	4
Instructions for Use	4
[A] Starting the Machine	4
[B] Operation Method	5
[C] Power Saving Mode	5
[D] Brewing Guide	5
Removing the Used Capsule	7
Descaling and Cleaning Guide	7
Cup Volume Memory	9
Factory Reset	9
Power Saving Mode	9
Protection Mode	10
Maintenance	10
Indicator Guide	10
Operation Conditions	11
Transportation and Storage	11
Warranty	12
Contact Us	12

Safety Instructions

Warning

- This product is intended for household use only and should not be used for commercial purposes.
- Before using any electrical appliance, make yourself acquainted with the essential safety precautions for machine operation.
- Carefully read this manual before operating the appliance to ensure proper use.

1. Verify that the voltage at your location corresponds with the appliance's rated voltage.
2. To avoid the risk of electric shock and fire, do not allow the power cord or plug to come into contact with water or other liquids.
3. Supervision is required when the coffee machine is operating. Keep it out of reach of children and individuals lacking capabilities.
4. After brewing or when cleaning is completed, unplug the appliance. Allow the coffee machine to cool before dismantling any parts for cleaning or maintenance.
5. Only use components specified by the manufacturer to avoid potential harm or danger.
6. Do not immerse the appliance in water; use it only indoors.
7. Do not let the power cord hang over the table edge or near any heat sources.
8. Do not place the coffee machine on or near stoves or ovens.
9. Use the coffee machine only as intended. Place it in a dry environment.
10. Fill the water tank with clean, cold water only. Do not use mineral water, milk, or other liquids.
11. When unplugging, grasp the plug directly. Do not pull on the power cord.
12. During operation, some parts may become very hot. Avoid direct contact

with surfaces, except for the handle.

13. Ensure the operating or storage temperature remains above zero degrees Celsius.

14. Do not use the coffee machine in areas of high temperature, strong magnetic fields, or humid environments.

15. This appliance should not be used by children aged 8 or below and they should not be permitted to operate this appliance.

16. If individuals with physical or mental limitations, or a lack of experience, wish to use the coffee machine, they should have supervision from someone familiar with its safe operation.

17. Maintenance is also prohibited for children unless they are over 8 years old and are supervised by a guardian.

18. Ensure to keep the appliance and its power cord away from children under 8.

19. This appliance is equipped with a grounding plug. Verify that the household socket is properly grounded.

20. Do not operate the coffee machine if the water tank is empty.

21. Capsules are for single use only and must not be reused.

Warning: To prevent injury, do not insert fingers into the brewing chamber.

Warning: The brewing chamber contains hot water. Avoid opening the handle during operation to prevent burns.

22. This appliance is intended for household and similar uses, including:

- Staff kitchen areas in shops, offices, and other work environments
- Farms
- Hotels, motels, and other residential accommodations
- Bed and breakfast environments

23. Keep the device out of reach of children and infants.

24. Please retain these instructions for future reference.

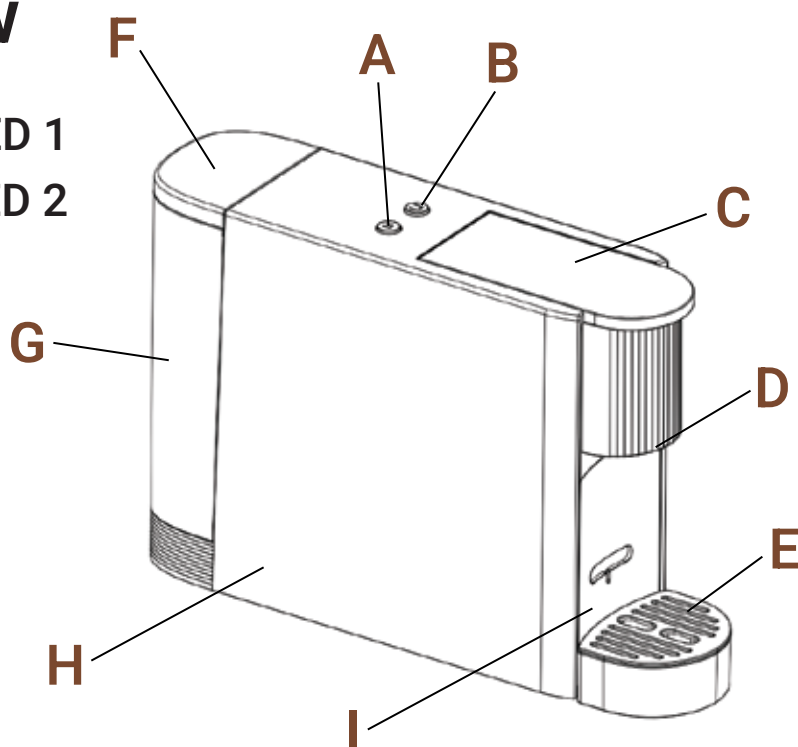
25. Do Not Place in a Cabinet While in Use: Never place the ice coffee maker in a closed cabinet or enclosed space while it is in operation. Ensure that the appliance has adequate ventilation during use to prevent overheating and ensure safe operation.

Specifications

Rated Voltage	220-240V
Rated Frequency	50/60Hz
Rated Power	1200W
Power Cord	UK 3 Pin Plug
Water Capacity	500ml
Material	ABS
Product Dimension	202×83×310mm
Product Weight	2.2kg
Standard & Compliance	CE/CB/CCC/ETL

Schematic View

- A.** [S1] 30ml Coffee Button/LED 1
- B.** [S2] 60ml Coffee Button/LED 2
- C.** Operating Lever
- D.** Extraction Nozzle
- E.** Drip Tray
- F.** Water Tank Lid
- G.** Removable Water Tank
- H.** Housing
- I.** Used Capsule Container



Instructions for Use

[A] Starting the Machine

- 1.** Fill the water tank to a level between the minimum (50ml) and maximum (450ml) marks.
- 2.** Upon powering the machine, the two key indicator lights will blink twice (0.5 seconds on, 0.5 seconds off, known as slow flashing) to signal entry into the self-test mode.

3. Approximately two seconds after starting, the self-test concludes. If successful, LED 1 and LED 2 will remain continuously lit, indicating readiness to enter power-saving mode.

Note:

- a.** If a fault such as an NTC error occurs, LED 1 and LED 2 will flash rapidly (0.2 seconds on, 0.2 seconds off).
- b.** If no operation occurs within five minutes during standby, LED 1 and LED 2 will extinguish, and the machine will automatically switch to power-saving mode.

[B] Operation Method

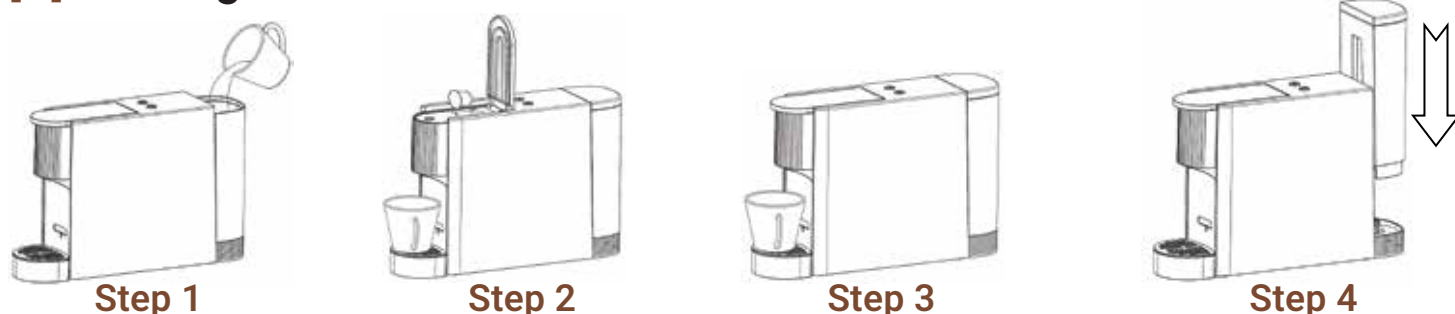
- 1.** In power saving mode, activate the pre-heat mode by pressing either the S1 or S2 button.
- 2.** Both LED 1 and LED 2 will flash slowly to confirm the entry into this mode.
- 3.** The boiler's preheating temperature is preset to 80°C.
- 4.** Once the boiler reaches this set temperature, LED 1 and LED 2 will shift from flashing to a steady light, indicating that the machine is now ready and will shift to standby mode after preheating is complete.

Note: The water pump does not activate during preheating. To exit preheating early, press and hold either S1 or S2 for more than four seconds.

[C] Power Saving Mode

If either the S1 or S2 button is pressed within five minutes, the machine will activate energy-saving mode to reduce power consumption and re-enters power saving mode.

[D] Brewing Guide



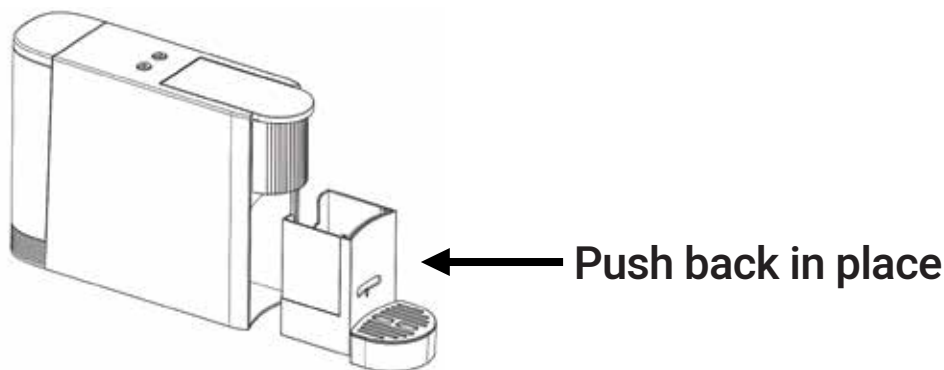
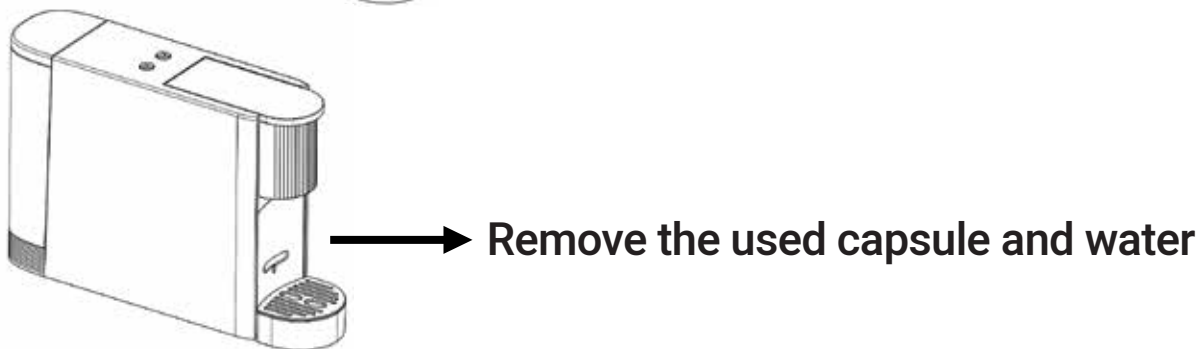
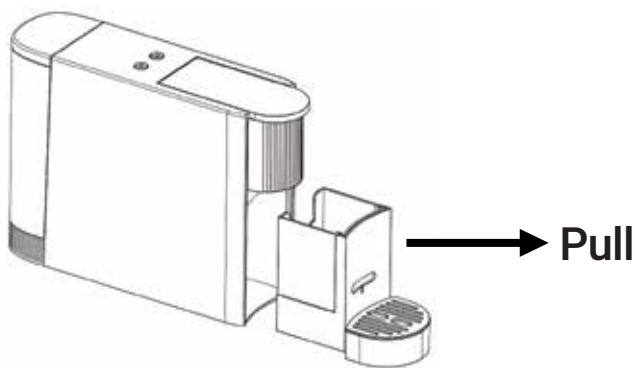
- 1.** After preheating, the machine will enter standby mode, and LED 1 and LED 2 will remain on. Insert the coffee capsule into the machine.
- 2.** Press the function button (S1 or S2) corresponding to the desired coffee capacity. The indicator light for the selected coffee function button will flash slowly.
- 3.** When the boiler reaches the preset temperature, the water pump will begin to operate. The corresponding LED light will remain on.
- 4.** The pump timing for a small cup is approximately 15 seconds (30 ml), and for a large cup, approximately 35 seconds (60 ml), based on the original Nespresso capsule.
- 5.** Once the set time is reached, the water pump will stop, and the indicator light will turn off after a delay of about 6 seconds.
- 6.** The machine will return to standby mode with both LED lights on, water pump off, and heater inactive, except during constant temperature mode.
- 7.** During the brewing process, press any key (S1 or S2) to stop coffee brewing, regardless of completion status. The water pump and heating element will immediately shut down, and the machine will power off and reset. The two LED lights will remain on in standby mode.
- 8.** If no operation occurs within 5 minutes after preheating or brewing, without pressing S1 or S2, the machine will automatically enter power-saving mode.

Note 1: If there is no water in the brewing chamber, open the handle to check for residual capsules or foreign objects. Clean before use.

Note 2: For first-time use or after prolonged inactivity, brew without a capsule at least once to remove residual water stains inside the machine.

Note 3: Use pure drinking water in the water tank for brewing.

Removing the Used Capsule



Descaling and Cleaning Guide

A. Entering the Descaling Mode

Fill the water tank with water and detergent, following the correct ratio. Turn off the power switch and plug in the power cord. There are two methods to enter the descaling mode:

Method 1: Press and hold the S2 button (large cup button). While holding, turn on the power switch until both indicator lights flash two times per second. Release the S2 button to enter cleaning mode.

Method 2: When the brewing count reaches 300, the machine will automatically enter descaling mode. Both indicator lights will flash two times per second. to remind the user of the need for descaling.

B. Descaling Steps

- 1.** After entering descaling mode, the two indicator lights will flash twice per second.
- 2.** Press the S1 or S2 key to start the descaling process.
- 3.** The water pump and heater will activate, and the water temperature will be maintained at 80-70°C.
- 4.** After approximately 90 seconds, the water pump and heater will stop automatically, preparing the machine for the next cleaning step.
- 5.** The machine will remain in descaling mode at this stage.
- 6.** To proceed, add approximately 500 ml of clean water to the water tank, then press any key to start the cleaning cycle.
- 7.** After another 90 seconds, the water pump and solenoid valve will cease operation, and the machine will enter standby mode.

Notes:

- 1.** There are two ways to stop descaling:
 - a.** Press and hold any key for more than 5 seconds to stop the descaling or cleaning process. If needed, press again to resume descaling. Alternatively, turn off the power supply or unplug the machine to exit descaling mode.
 - b.** You can also turn off the power switch or unplug the machine to exit descaling mode. If you wish to restart descaling, re-enter descaling mode according to the instructions.
- 2.** After completing the cleaning process, all previous brewing counts will be reset.
- 3.** Avoid using coffee capsules during descaling and cleaning operations.

C. Drainage Function

- 1.** When the machine is connected to power but not turned on, press both S1 and S2 buttons simultaneously to activate the drainage function.
- 2.** Hold the buttons to continuously drain water.
- 3.** The two indicator lights will flash alternately once per second.
- 4.** The water pump stops draining after working for 8 seconds.

Note: Each time the button is pressed, the water pump operates for 8 seconds and then stops.

5. In drainage mode, heating is not activated. The machine exits drainage mode once the power is disconnected.

Cup Volume Memory

1. While the machine is powered on and preheating is complete, press and hold the large cup/S2 button (without releasing).

2. Release the button once the desired cup volume is reached.

3. The machine will then save the current cup volume.

Note: Only the large cup button has the cup volume memory function. The adjustable volume range is approximately 200-30ml.

4. Repeating the cup volume memory setting will overwrite the previous setting.

Factory Reset

1. While the machine is powered on and preheating is complete, press and hold both the small and large cup buttons (S1 and S2).

2. The S1 and S2 indicator lights will flash three times, then release the buttons.

3. Both indicator lights will turn on with solid white light, indicating the machine has been reset to factory settings.

Power Saving Mode

When preheating or brewing is complete and there is no operation for 5 minutes (without pressing keys S1 or S2), the machine will automatically enter power-saving mode with all indicators turned off. In power-saving mode, press any key to enter standby mode.

Protection Mode

When the machine is powered on, it will first check for any faults in the NTC (such as a short circuit or open circuit). If an NTC fault is detected, all function keys are disabled, and LED1 and LED2 will flash rapidly at a rate of 4 times per second. In any working mode, if the NTC fails, the machine will stop operation. The boiler will cease heating, and the water pump will halt. The indicator will immediately signal the issue, and all operation buttons will be disabled.

Maintenance

To clean the exterior of the machine:

1. Unplug the power cord and allow the machine to cool before cleaning.
2. Use a clean, soft cloth to wipe the surface. Avoid using rough fabric or wet cloths.
3. Be cautious of the sharp needle inside the brewing chamber to prevent injury.
4. Remove the used capsule container, detach the cover, and wash it with clear water.

Indicator Guide

Machine Status	Indicator Status
Connect to the power supply Entering power-saving mode	LED1 and LED2 turn on twice, then turn off
Press the button to start preheating (initial use)	LED1 and LED2 lights flash slowly
Heating before brewing	LED1 or LED2 light flashes slowly
Brewing coffee	LED1 or LED2 light remains on
NTC error detected	LED1 and LED2 flash quickly
Indicator light malfunction	Check the power supply and ensure the plug is correctly inserted into the socket

Water shortage in the tank during coffee brewing	LED1 or LED2 lights flash quickly
Brewing completed or in standby mode	LED1 and LED2 remain on

Note: If the coffee machine malfunctions or fails to operate correctly for any reason, do not attempt to power it on again. Please contact a service center for inspection and repair.

Operation Conditions

Warning: Store the machine out of reach of children.

1. Use in a dry location, away from high temperatures and direct sunlight.
2. Relative altitude: below 6000 ft (1828 m).
3. The operating temperature is 0-40°C.
4. The operating relative humidity is 10 %-95 % RH.

Transportation and Storage

1. Transportation and storage temperature: 60-0°C.
2. The allowed relative humidity is 10%-950 % RH.
3. Store in a clean, dry place, away from high temperatures or direct sunlight.

Warranty

Products that you buy directly from our **LePresso** website or shop come with a 24-month warranty.

The 24-month warranty applies to products purchased directly from our **LePresso** website or store. If **LePresso** products are bought from any of our verified retailers, then the product is eligible for only a 12-month warranty. To extend your product's warranty, visit our website <https://www.lepresso.com/warranty> and fill in your details in the provided form along with an uploaded picture of the product to process your request. Once approved, you will receive a confirmation email of the extended product warranty. Upload the required information within 48 hours of purchase to be eligible for a 24-month warranty period.

For more info, please check:

<https://www.lepresso.com/warranty>

Contact Us

If you have any questions or concerns about our Shipping and Returns Policy, please contact us at: info@lepresso.com

Website: <https://www.lepresso.com/>

Instagram: [lepresso_official](https://www.instagram.com/lepresso_official)