

LéPRESSO



LePresso

GRINDGO 4-In-1 Outdoor Coffee Set

SKU: LP4IN1OCFFSSL

Table of Contents

Safety Precautions	2
Schematic View	3
Using Auto Grinder to Make Coffee	4
Using Manual Grinder to Make Coffee	6
Using Heating Function	6
Specifications	7
Disposal	8
Warranty	9
Contact Us	9

Thank you for purchasing the Coffee Maker for Outdoor Use. Before using the product, please carefully read this User Manual to guarantee correct usage and keep it secure for future reference.

Safety Precautions

To ensure safety and preserve the high quality of the product, we recommend carefully reading and following these instructions:

- 1.** Do not immerse the heating base, heating cup, or electrical grinder motor in water or any other liquid to avoid personal injury or damage to the product. Additionally, do not place these parts in the dishwasher.
- 2.** Except for the three parts mentioned above, ensure that all other components (which may come into contact with water, coffee beans, or ground coffee) are thoroughly cleaned before use.
- 3.** Clean the heating cup carefully; only clean the lid and the inside of the heating cup. Keep the bottom of the heating cup dry at all times.
- 4.** Before using, connect the charging cable to the heating base and plug it into a charger with an output of no more than 4A. Once the battery shows %100, you may disconnect the charger.
- 5.** Before using, connect the charging cable to the auto grinder and plug it into a charger with an output of no more than 2A. The indicating light will flash while charging, and it will stop flashing when charging is complete, signaling that you can disconnect the charger.
- 6.** Always keep the product on a dry, flat surface to ensure stable operation.
- 7.** Use only roasted coffee beans; the product is not intended for other purposes.
- 8.** Keep fingers and utensils away from the grinding burr to avoid injury and damage.
- 9.** Keep the product out of reach of children to prevent accidents.

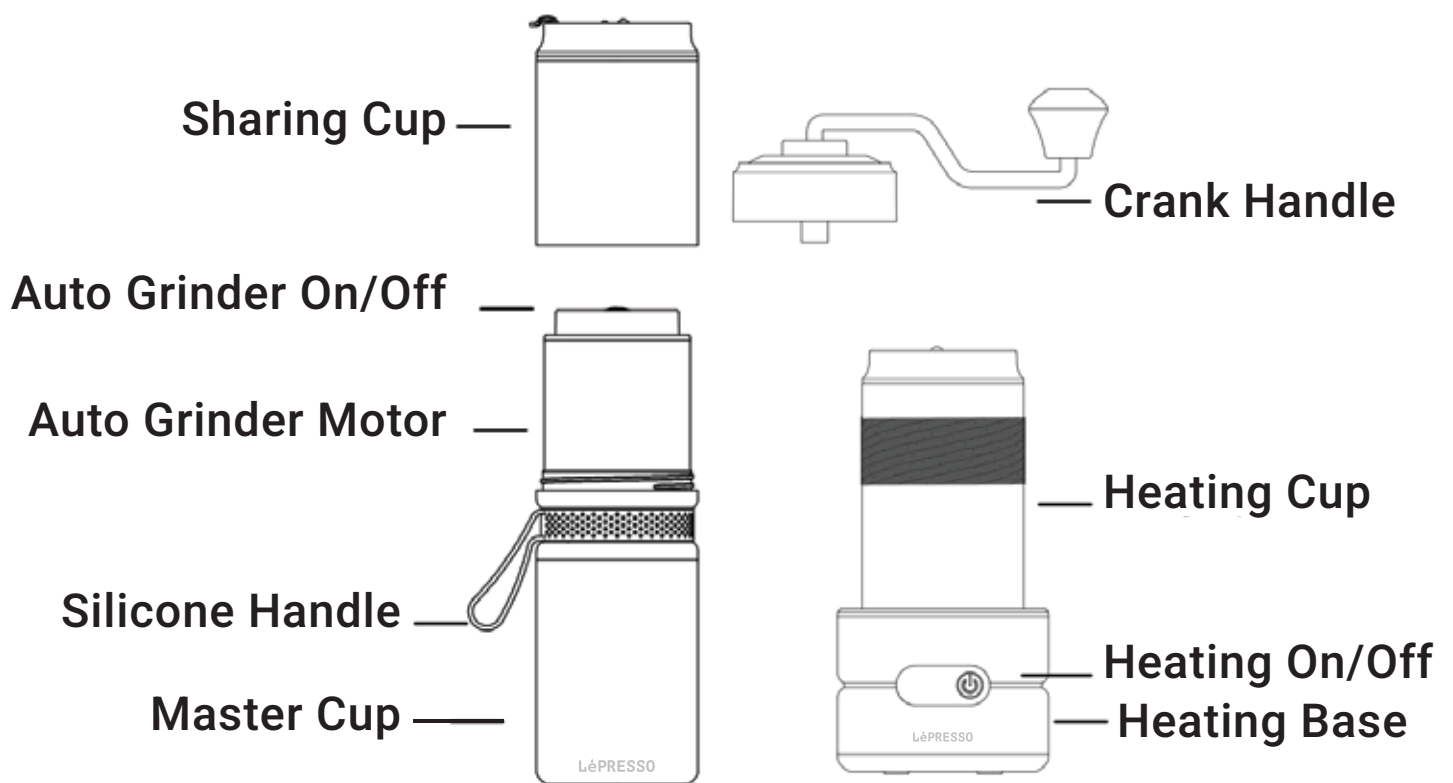
10. Store the product away from flammable or explosive gases and avoid exposing it to high temperatures.

11. Do not attempt to repair the unit in case of malfunction. Always take it to an authorized service center for repairs.

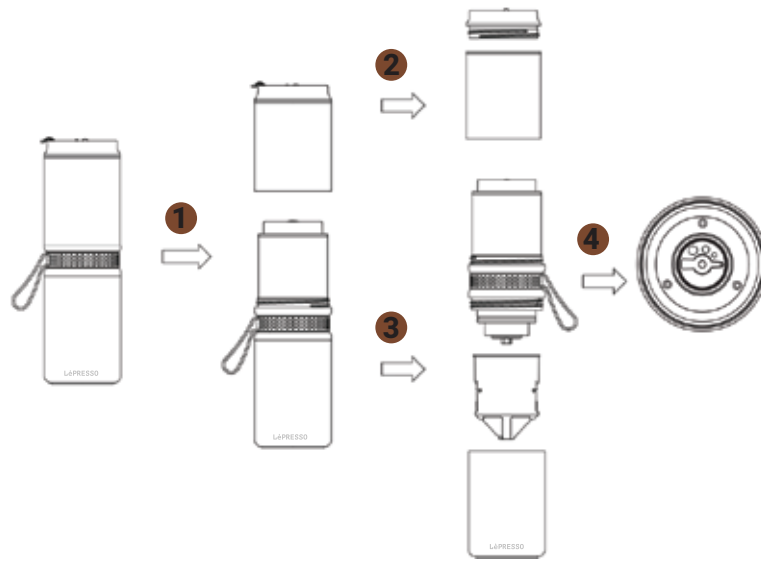
12. Do not dismantle the product by yourself as this will invalidate the warranty.

Note: If the surface of the product is cracked, do not use it again, especially for charging, to avoid the risk of electric shock.

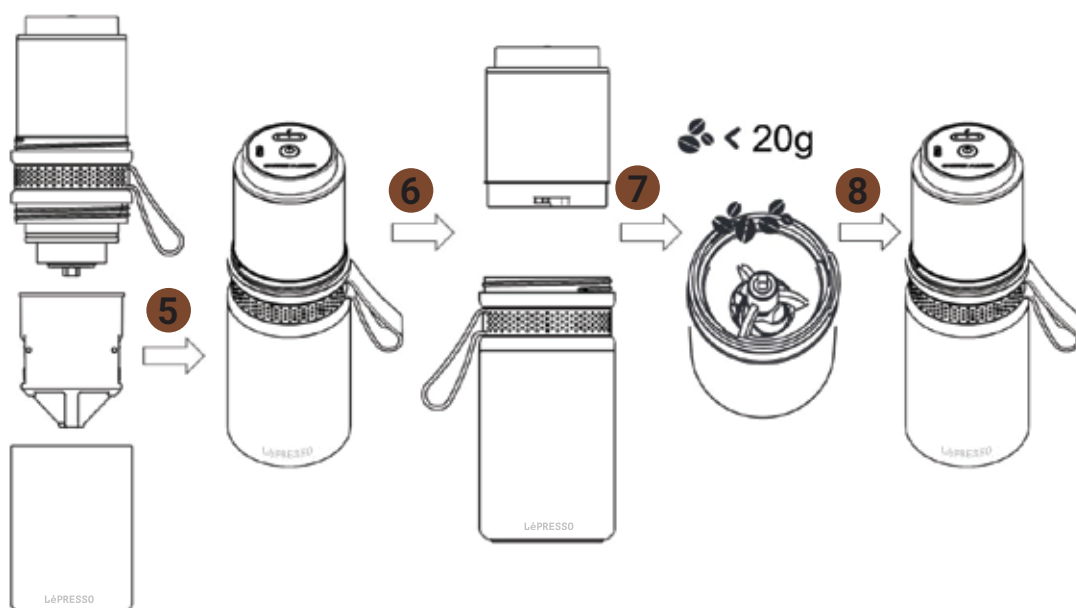
Schematic View



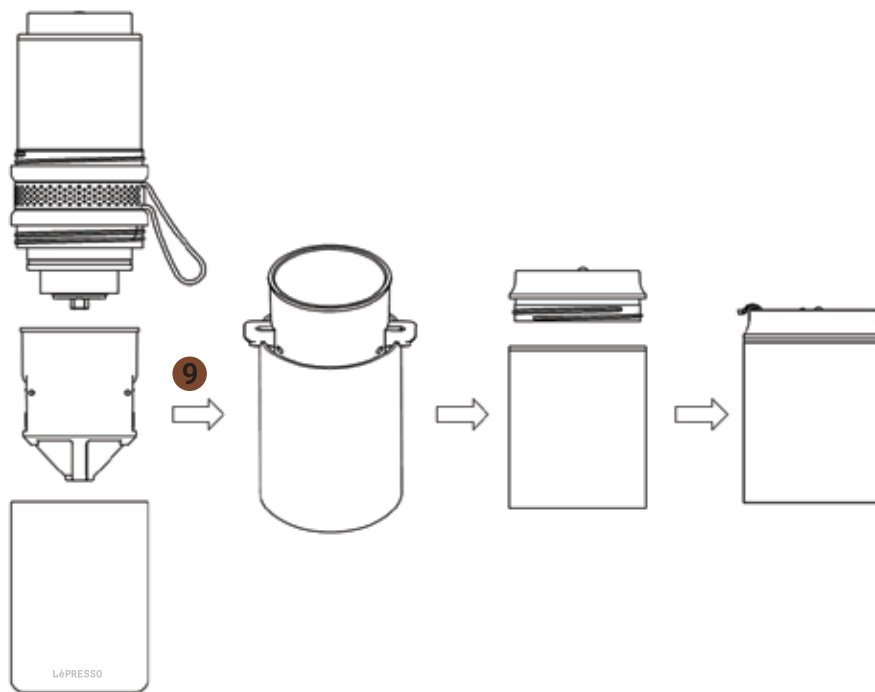
Using Auto Grinder to Make Coffee



1. Remove the sharing cup by twisting it counterclockwise.
2. Twist the lid off the sharing cup if you want to make more than one cup of coffee, then turn the cup upside down. (Skip this step if you only need one cup of coffee.)
3. Remove the master cup and pull out the filter to adjust the grind thickness to your preference.
4. Rotate the SUS pointer clockwise to adjust the grind from thick to fine. Rotate it counterclockwise to adjust from fine to thick.



5. After selecting the desired grind size, assemble the filter and master cup back onto the auto grinder. (Skip steps 5-3 if this is your first time using the grinder and you've already chosen the grind size.)
6. Follow the unlock sign to remove the motor part of the auto grinder.
7. Add roasted coffee beans to the container, ensuring the amount does not exceed 20g per batch.
8. Lock the motor part back onto the grinder and press the on/off button. The grinder will automatically turn off once the grinding process is complete.



9. Once the grinder has finished, twist off the master cup and carefully remove the filter. Hang the filter on the master cup using the two ears, then slowly pour boiling water over it. Your coffee is ready to enjoy. Take the lid with you if needed.

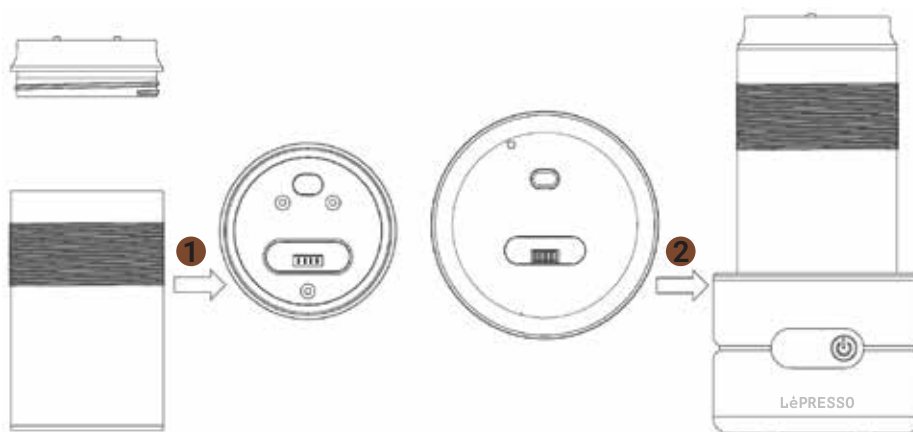
Warning: When the battery is low, the indicating light will flash. Use the provided charging cable with a connector that has an output of no more than 2A. Once all three indicating lights stop flashing, it means the charging is complete. Remember to disconnect the charger from the power outlet promptly.

Using Manual Grinder to Make Coffee



- 1.** Follow the unlock sign to remove the motor part of the grinder, then add roasted coffee beans to the container, ensuring the amount does not exceed 20g per batch.
- 2.** Rotate the hand crank part clockwise to securely attach it to the grinder.
- 3.** Enjoy making coffee by hand. Once the grinding is complete, simply follow step 9 from the auto grinder instructions.

Using Heating Function



- 1.** Rotate the lid counterclockwise to remove it, then pour in the desired amount of water. Close the lid securely.
- 2.** Fit the heating cup onto the heating base in the correct position.
- 3.** Press and hold the on/off button for 3 seconds to put the heating base into standby mode.
- 4.** Press the on/off button briefly to select your desired temperature (55°C, 65°C, 75°C, 85°C, 95°C, 100°C).
- 5.** Once the desired temperature appears on the display, leave it to start heating automatically.
- 6.** When the water reaches the selected temperature, you will hear a beeping sound (di-di-di) to indicate that the water is ready.

Specifications

Model	LP4IN1OCFFSSL
Grinding Power	13W
Heating Power	120W
Heating Battery	14.8V 4500mAh
Grinding Battery	3.7V 2000mAh
Bean Cup Capacity	20g
Coffee Cup Capacity	150ml
Charging	USB 5V
Material	ABS, PC, and SUS304
Motor	Pure Copper

Disposal

This product must not be disposed of as unsorted household waste. It is important to separate such waste for proper treatment and recycling, in compliance with local waste management regulations.

Warranty

Products that you buy directly from our **LePresso** website or shop come with a 24-month warranty.

The 24-month warranty applies to products purchased directly from our **LePresso** website or store. If **LePresso** products are bought from any of our verified retailers, then the product is eligible for only a 12-month warranty. To extend your product's warranty, visit our website <https://www.lepresso.com/warranty> and fill in your details in the provided form along with an uploaded picture of the product to process your request. Once approved, you will receive a confirmation email of the extended product warranty. Upload the required information within 48 hours of purchase to be eligible for a 24-month warranty period.

For more info, please check:

<https://www.lepresso.com/warranty>

Contact Us

If you have any questions or concerns about our Shipping and Returns Policy, please contact us at: info@lepresso.com

Website: <https://www.lepresso.com/>

Instagram: [lepresso_official](https://www.instagram.com/lepresso_official)