



Green Lion

Snail Carpet Cleaner Heat Mode Function

SKU: GNSNCARPETGY

Model No: GL-CC13K

Table of Contents

Overview	2
Specifications	2
Safety Precautions	2
Schematic View	4
Assembly Guide	5
Instructions for Use	7
Cleaning and Maintenance	8
Troubleshooting	9
Warranty	10
Contact Us	10

Overview

Thank you for choosing the GL-CC13K Spot Cleaning Vacuum Cleaner. This manual is specifically designed for the GL-CC13K model and serves as a guide for usage and maintenance. For any inquiries or unaddressed matters, please feel free to contact our customer service department.

Specifications

Model	GL-CC13K
Motor Power	450W
Noise Level	80dB
RPM	38000
Air Flow	<1.2m ³ /min
Suction	13Kpa
Capacity	Clean water (2L), Dirty water (1.4L)
Cleaning Mode	Eco & Heat Mode
Cable Length	5m -UK
Temperature Hot Water	55 Degree
Time to Reach Hot Water	10 Sec
Product Weight	3.65 kg
Product Size	19×34×40 cm

Safety Precautions

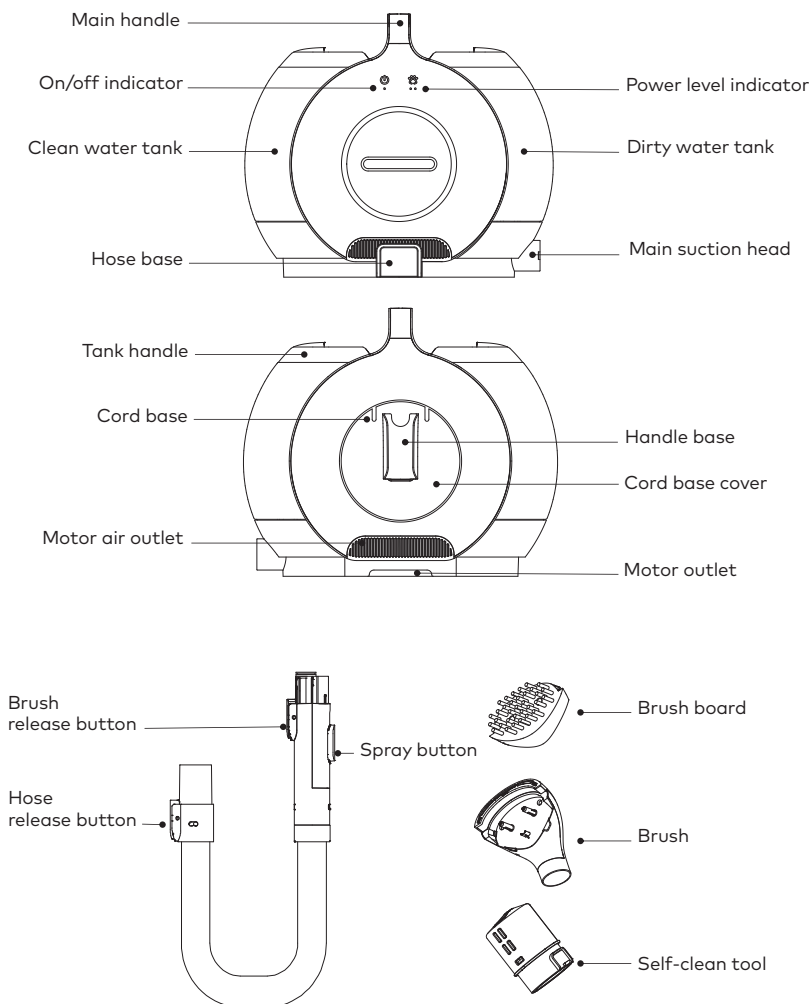
1. Please read all safety precautions before using this product. Install the machine according to all instructions and steps in this manual. Any operation inconsistent with the instructions may result in product damage or serious personal injury.
2. This product is only suitable for conventional household use and is not designed for industrial or outdoor use.

3. The product is not intended for use by individuals with physical, sensory, or intellectual impairments, or by children, unless supervised or directed by a guardian to ensure safe usage.
4. Do not immerse the product in water or any liquid.
5. Do not drop or mishandle the product.
6. Avoid touching the plug or any live insulated part of the product with wet fingers to prevent electric shock.
7. If the power cord is damaged, it must be replaced by the manufacturer, a maintenance department, or qualified professionals to avoid hazards.
8. Do not aim straws, nozzles, or other parts of the product at eyes, ears, or mouth.
9. Do not insert metal objects, pins, wires, or similar articles into cracks or openings of the product to avoid electric shock or injury.
10. Only professional or technical personnel are allowed to disassemble, repair, or modify the product.
11. When not in use, unplug the product to avoid risks such as electric leakage, fire, or failure.
12. If abnormal behavior is detected during use, stop using the product immediately, power it off, and contact the company's after-sales service.
13. After use, clean the sewage tank promptly to prevent odors and blockages caused by suction debris or motor overheating, which could shorten the product's service life.
14. After using the machine, clean the water tank and store it in a dry place to maintain the machine's longevity.
15. This product is suitable for cleaning household cloth materials such as sofas, mattresses, and carpets. Other materials may not yield optimal results.
16. Use only cleaning fragrances provided or recommended by the company, following the prescribed ratio to avoid excessive foam, which could damage the motor and reduce service life.
17. While the product is operating, avoid shaking the machine from side to side to prevent sewage from entering the motor.
18. A small amount of water remaining in the machine after production

testing is normal and does not affect performance.

19. All technical data and details in this manual have been verified by third-party testing institutions. The company reserves the final interpretation rights.

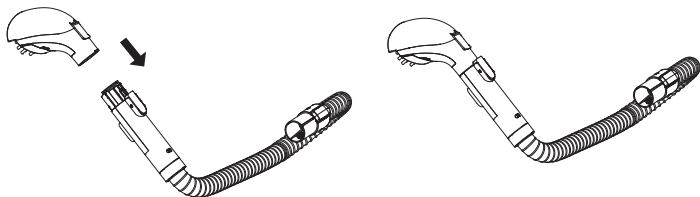
Schematic View



Assembly Guide

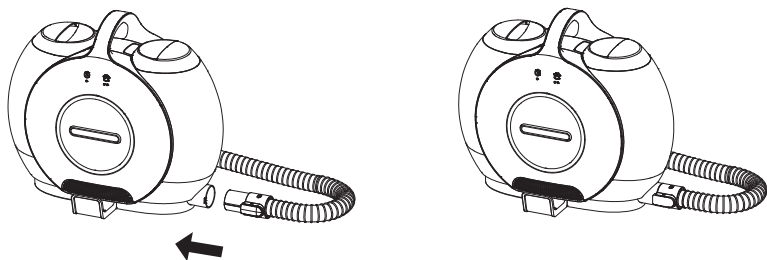
Brush Install

Insert the brush head into the hose head in the direction of the arrow, as shown in the drawing. After hearing the click sound, pull the brush head in reverse. Do not unhook it improperly.



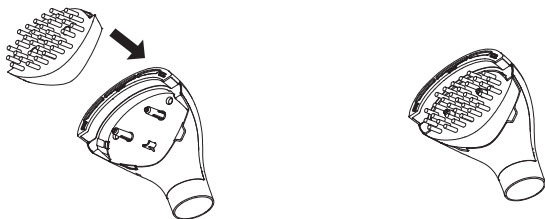
Hose Install

Insert the connector into the host in the direction of the arrow and secure it immediately after hearing the click sound.



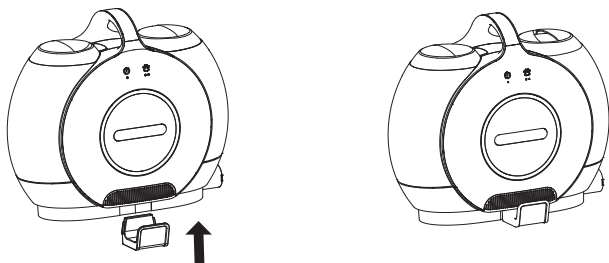
Brush Head Install

Align the two round holes of the brush board with the brush head post and insert them. The installation is complete when you hear a click sound.



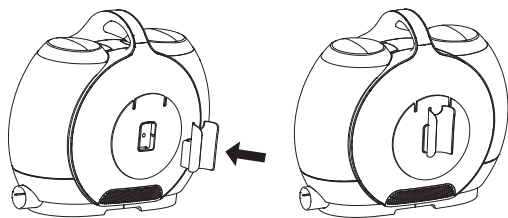
Hose Base Install

Insert the hose rack into the host machine along the slot in the direction of the arrow, as shown in the drawing. After hearing the click sound, pull the hose rack backward, ensuring it is secure.



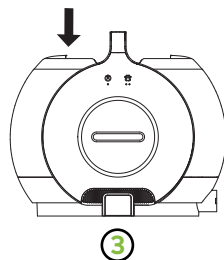
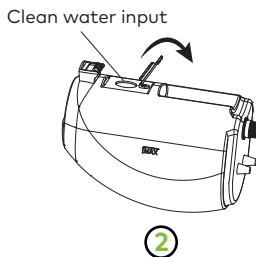
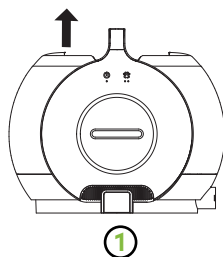
Hand Brush Base Install

Insert the handle frame into the winding cover plate according to the drawing and in the direction of the arrow. After hearing the clicking sound, pull back to secure it, but do not detach.



Clean Water Tank Install

1. Hold the clean water tank handle and remove the clean water tank upward as shown.
2. Open the seal plug of the clean water tank. Place the tank horizontally as shown in the figure. Fill it with pure water, ensuring the water level does not exceed the MAX line. Add the appropriate cleaning agent and cover the seal plug securely.
3. Install the clean water tank in the direction shown. A clicking sound indicates that the water tank is properly installed. Press down on the top of the clean tank to secure it.



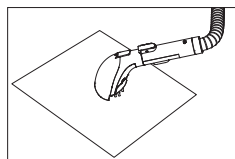
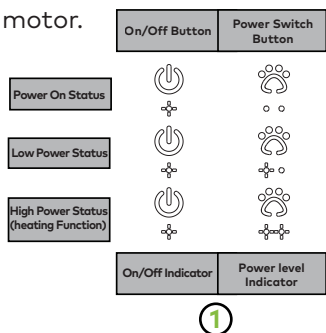
Instructions for Use

1. Ensure the clean water tank and sewage tank are correctly installed. Pull out the power cord and plug it into the socket. The standby light will turn on, and the buzzer will sound. Touch the gear button to start in low gear. Press the button to switch to high gear. You can toggle between high and low gear as needed. To shut down, press the standby button. Various status indicators are shown in the figure.

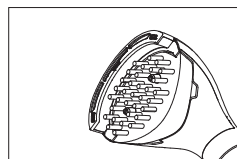
2. Using the Heat function: Switch to high gear and long-press the water button to remove cold water from the hose and main cleaning brush. Wait for 10 seconds, then press the water button again to spray hot water.

Note: When using the brush head, ensure the brush head's surface is close to the object being cleaned. Long press the water outlet button to spray water on the desired area and clean it repeatedly. When water is no longer needed, release the water outlet button.

3. Use the three long waist holes on the brush head to absorb water. If the amount of water being absorbed is too large, monitor the change in water levels in the sewage tank to prevent sewage from entering the motor.



②

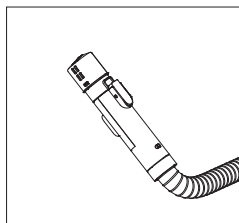
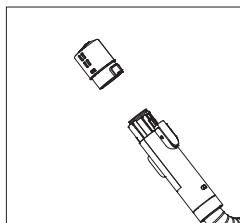


③

Cleaning and Maintenance

A. Hose and Brush Clean

Install the self-cleaning head on the handle, and long-press the water button to clean the hose.



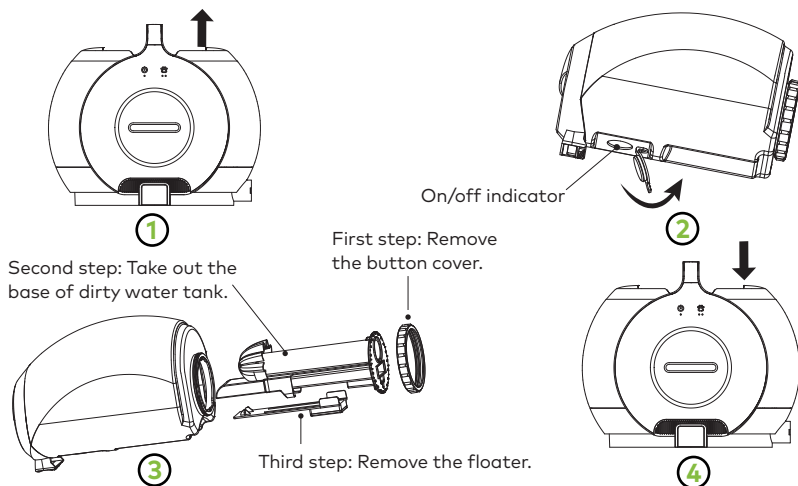
B. Dirty Water Tank Clean

1. Power off the product before cleaning the dirty water tank. Unplug the cord and remove the tank from the main body.

2. Open the sealing plug of the tank, pour out the sewage slowly as shown in the diagram, and rinse it with clean water several times.

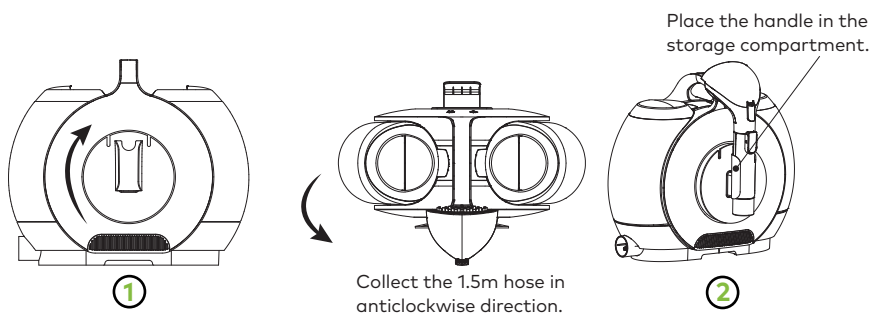
3. If the tank is very dirty, disassemble the inner parts, clean them thoroughly, and reassemble.

4. Put the tank back into the main body according to the diagram until you hear a click sound.



C. Storage

After using the machine, wrap the power cable around the cover plate as shown in the picture. Ensure the power cable is secured in the card slot.



Troubleshooting

Problem	Possible Cause	Solution
The suction or spray of the brush is getting weak	Dirty water tank is full	Please dump the water from the tank
	Hose blockage	Check the hose and clean it
	Prolonged use activates motor thermal protection	Power off the machine and reuse it after 15 minutes
Spray water nozzle not working	Lack of water in the clean water tank	Add water to the clean water tank
	Clean water tank assembled incorrectly	Assemble the clean water tank and push it firmly to the bottom
	Nozzle blockage	Send to the store for service
	Button not pressed	Press the button
Hose water leakage	Sealing is missing	Send to the store for service
Water tank leakage	Sealing is missing	Send to the store for service
	Sealing not assembled properly	To check the sealing of the water tank
Other problems		Send to a center for service

Warranty

Products that you buy directly from our **Green Lion** website or shop come with a 24-month warranty.

When you buy **Green Lion** products from any of our approved sellers, you only get a 12-month warranty. If you want to extend this warranty, go to our website at [**https://www.greenlion.net/warranty**](https://www.greenlion.net/warranty) and fill out the form with your information. Don't forget to upload a picture of the product too. After we've checked and accepted your request, we'll send you an email to confirm that your product's warranty has been extended.

For more info, please check:
[**https://www.greenlion.net/warranty**](https://www.greenlion.net/warranty)

Contact Us

If you have any questions about this Privacy Policy, please contact us at:

Website: [**https://www.greenlion.net/**](https://www.greenlion.net/)

Sales: [**sales@greenlion.net**](mailto:sales@greenlion.net)

Service Support: [**Support@greenlion.net**](mailto:Support@greenlion.net)

Telegram: [**@greenlion_global**](https://t.me/greenlion_global)

Instagram: [**@greenlion_global**](https://www.instagram.com/greenlion_global)