

PORODO



Porodo

Selfie Stick Pro X with 360° AI Smart Tracking

SKU: PD-TRSLFT-BK

Table of Contents

Features	2
Product Overview	2
Compatibility	2
Tracking Function	3
Pan Tilt Operation Instructions	3
Instructions for Use	5
A. Bluetooth Connection	5
B. Remarks	5
C. Remote Control	5
D. Recording for TikTok	6
Removing the Remote	7
Charging the Remote	7
Clip Rotation	7
Opening the Tripod	8
360° Panorama	8
Tripod Mode	8
Product Specifications	9
Remote Control Technical Parameters	9
Troubleshooting	10
Volume Key Setting Guide	11
Warranty	12
Contact Us	12

Features

1. Equipped with 360° panoramic tracking, this selfie stick allows for seamless rotation and smooth tracking of movements for perfect shots from every angle.
2. Featuring a stable quad-base design, the selfie stick provides firm support to ensure steady and wobble-free photos and videos.
3. Integrated with detachable lights, the selfie stick enhances lighting options for superior selfies and recordings, even in low-light environments.
4. Made from high-quality aluminum alloy, this selfie stick is both lightweight and durable, offering long-lasting use and portability.
5. With a 1500mAh rechargeable battery, the device provides extended usage time, allowing for longer shooting sessions without interruption.

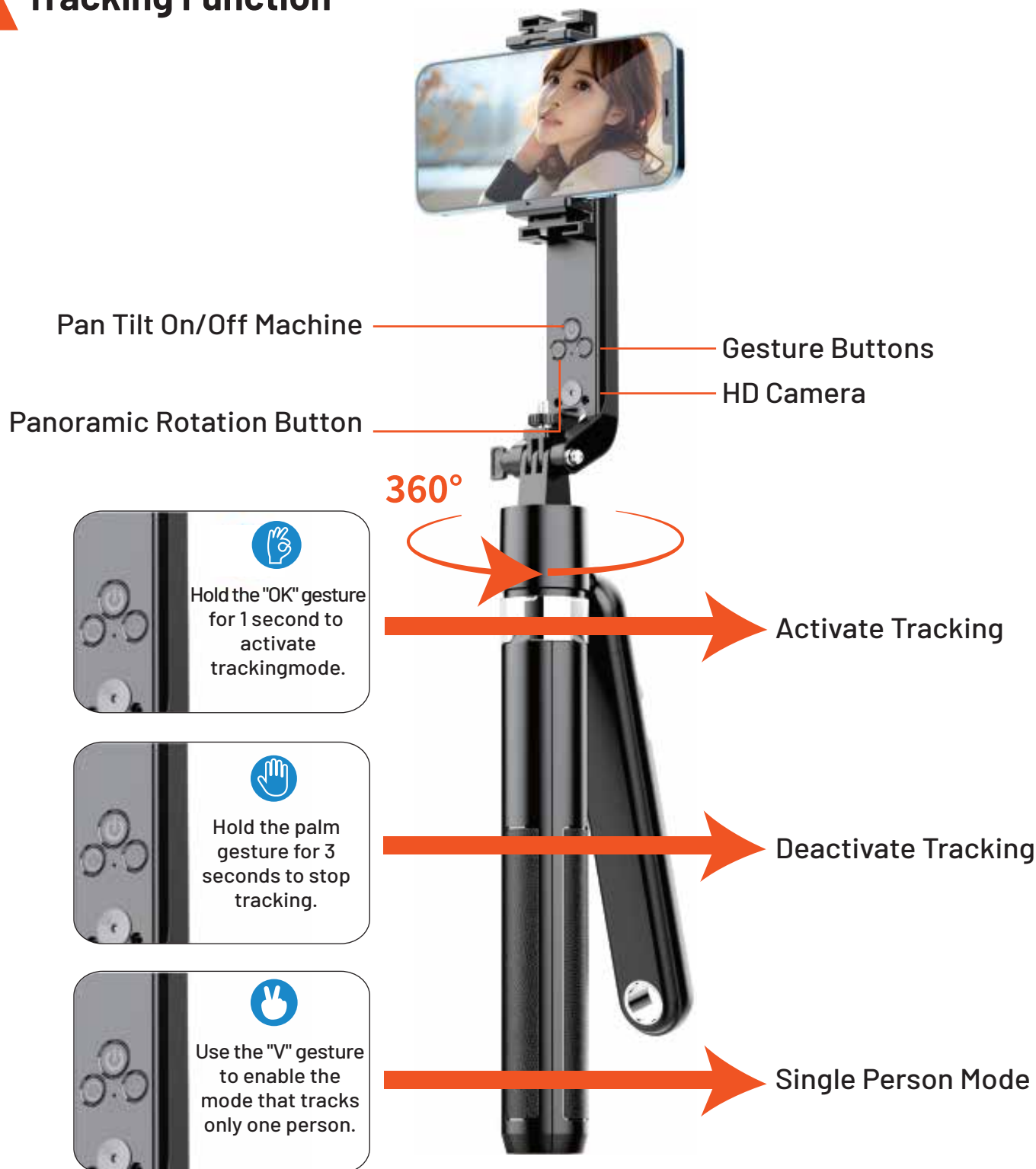
Product Overview



Compatibility



Tracking Function



Pan Tilt Operation Instructions

1. Press and hold the power button for 3 seconds to turn the device on or off.
2. After powering on, adjust the camera angle to ensure that it can detect your face. If no face is detected, the green light will flash. When a face is detected, the green light remains solid, indicating normal tracking. The green light will flash again if the camera loses track due to rapid movement.

- 3.** Press the power button to stop tracking, indicated by a red light. Press the power button again to resume tracking.
- 4.** For gesture-based operation, hold the palm gesture for 3 seconds to stop tracking. Hold the "OK" gesture for 1 second to start tracking again.
- 5.** Press the palm button to turn off gesture control. This will activate the blue indicator light, signifying gesture control is disabled. If a face is detected, the blue light will stay solid. If no face is detected, the blue light will flash. Press the button again to reactivate gesture control, indicated by the green light.
- 6. Single-Person Tracking:** Activate single-person tracking by showing the "V" gesture. The indicator light will flash three times, confirming that the device is now in single-person mode. If others pass by, the yellow light will flash three times but the device will continue following the selected person. Show the "OK" gesture to deactivate single-person mode.
- 7.** In single-person mode, if the person is blocked from view for more than 10 seconds, the yellow light will flash continuously, and tracking will turn off. If the locked person is not within the camera's range, the red light will turn on. You can reactivate full tracking by making an "OK" gesture or pressing the power button.
- 8. Full Follow Mode:** If the subject is lost in full follow mode, the green light will continue flashing. The device will shut down after 15 minutes if no subject is detected. If a person enters the frame within those 15 minutes, the device will resume tracking.
- 9. Slow Panoramic Mode:** Press the rotation button to start a slow clockwise rotation. Press it again to stop and follow the subject. To rotate counterclockwise, double-click the rotation button, then press once more to stop and follow. To exit panoramic mode, press the power button while rotating.
- 10. Quick Panoramic Mode:** Triple-click the rotation button to initiate a quick clockwise rotation. Press the button again to stop and follow the subject. To exit panoramic mode, press the power button while rotating.
- 11. Auto Shutdown:** If the subject is not detected for 15 minutes, the device will automatically shut down.
- 12.** When the battery is low, the red light will flash as a warning. If the device is powered on with a low battery, it will shut down after one minute due to insufficient voltage.
- 13.** The red light remains on during charging and turns off once the battery is fully charged.

Instructions for Use

A. Bluetooth Connection

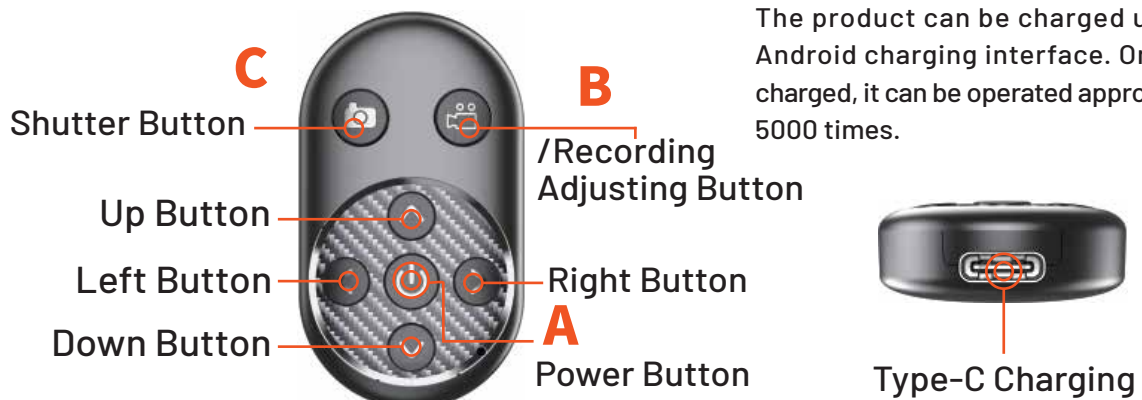
1. Press and hold the power button to power the device on or off.
2. Once powered on, the LED light will flash white, indicating Bluetooth is ready to connect.
3. On your phone, open the Bluetooth settings, search for the device named "PD-TRSLFT" and select it.
4. Confirm the connection by clicking "Yes". The device is now successfully connected.



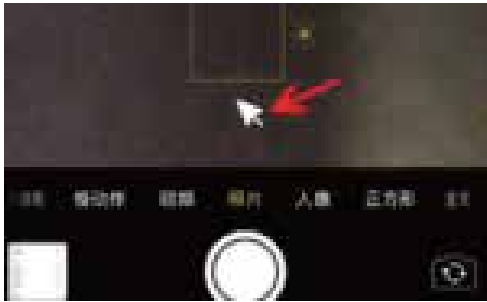
B. Remarks

1. For Android devices:
a connection can be made without additional steps.
2. For iPhone users
 - 2.1 You must first enable the "Assistive Touch" feature.
 - 2.2 Navigate to Settings > Accessibility > Touch > Assistive Touch.
 - 2.3 Toggle the Assistive Touch on.
 - 2.4 A floating touch dot will appear, enabling you to use the assistive touch function.

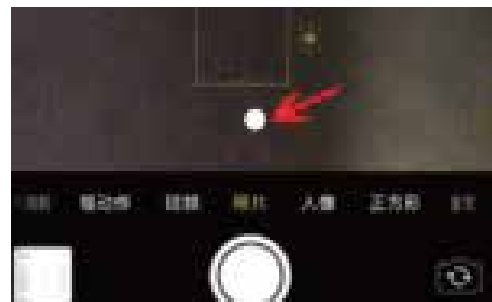
C. Remote Control



1. **Up Button:** Press to move the phone screen upward.
 2. **Down Button:** Press to move the phone screen downward.
 3. **Left Button:** Press to navigate the page to the left.
 4. **Right Button:** Press to navigate the page to the right.
 5. **Power Button:**
Long Press: Turn the device on or off.
Single Press: Play or pause the content.
Double Press: Like the current content.
 6. **Shutter Button:** Use this button to take photos or record videos.
 7. **Recording/Adjusting Button:** Long press to adjust the mouse pointer position.
- Note:** To reposition the guide dot or arrow, hold down the Recording/Adjusting Button and use the right, left, up, or down buttons to move the pointer to the center of the screen.



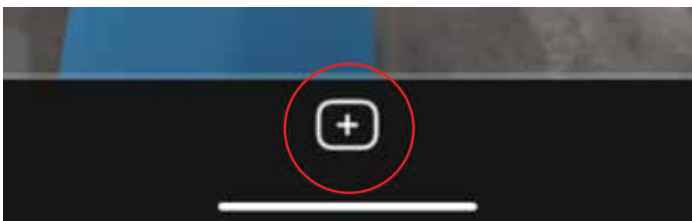
The mouse arrow displayed on Android devices.



The dot displayed on iOS devices

D. Recording for TikTok

1. Ensure TikTok is updated to the latest version.
2. Launch the TikTok app and select the "+" button for shooting.
3. Tap the settings icon located in the upper right corner.
4. Turn on the device and use the volume key to capture photos or videos.



Removing the Remote

Slide the remote control up and out.



Charging the Remote

Features an Android micro USB interface for charging. There is no need to replace the battery. The device can also be charged using a standard mobile phone charger.



Clip Rotation

The clip can freely rotate, allowing you to take photos horizontally and vertically from various angles, enhancing the flexibility and versatility of your photography.

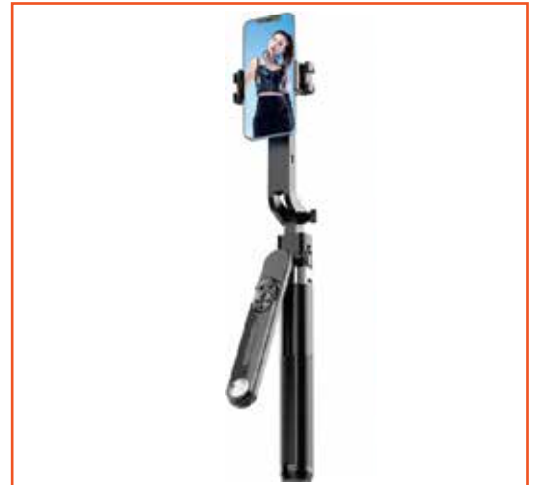


Opening the Tripod

Locate the "PUSH" button at the bottom of the handle and press it. The four legs will automatically extend. Adjust them to the desired angle for stable support.



There is no need for caution while shooting. The images captured are exceptionally stable and clear.



360° Panorama

Experience seamless movement. Capture panoramic images effortlessly.



Tripod Mode

Gently squeeze the electroplated section and either push down or lift up to open or close the tripod.



Product Specifications

Material	ABS + Aluminum Alloy
Battery Capacity	1500mAh, 300mAh (Lights)
Input	5V/1A
Recharge Time	3H
Working Time	Up to 6H
Bluetooth	V5.2
Transmission Range	10M
Maximum Height	1.8M
Brightness Settings	9 Levels
LED Count	35 LED (19 white, 16 warm)
Weight	677g

Remote Control Technical Parameters

Battery Model	402025 polymer rechargeable battery
Charging	5V/1A
Battery Capacity	55mAh
Charging Current	About 100mA
Full Charge Time	About 1-2 hours
Bluetooth Version	5.2
Compatible Bluetooth Version	3.0 and above
Compatible OS	iOS/Android
Transmission Frequency	2.4GHz-2.4835GHZ
Connection Distance	10m (32 feet)
Maximum Transmission	2dbm

A. Solution for Remote Control Connection Issues to Mobile Phone.

1. Activate your mobile phone's Bluetooth and remove any existing paired devices.
2. Turn off your mobile phone and then turn it back on to reset the system.
3. Similarly, turn off the Bluetooth remote control and then turn it back on.
4. Reactivate the Bluetooth connection on your mobile phone.
5. Enable Bluetooth on the mobile phone.
6. Turn on the remote control.
7. Search for the remote in your phone's Bluetooth settings.

When "PD-TRSLFT" appears, select "Connect." If the interface shows Connecting or prompts to Connect/Pair, press the remote control button quickly and repeatedly until the connection is established normally.

Note: This initial connection setup might be required only once. Subsequent connections should occur automatically for everyday use.

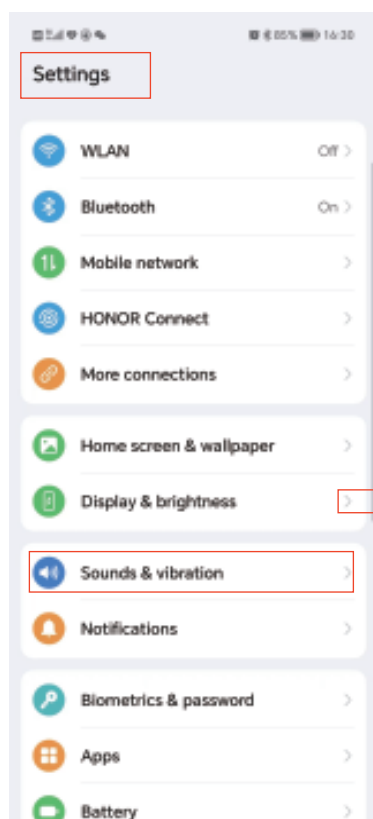
B. Adjusting Camera Settings Using the Remote Control for Android Phones.

1. Open your camera app to enter the photo mode.
2. Swipe left or find the settings option within your camera app.
3. Select the function assigned to your phone's volume keys.
4. Change the volume key setting to act as the shutter button (avoid setting it to zoom or focus).
5. The navigation to these settings may vary by device. Please refer to your phone's user manual for detailed instructions.

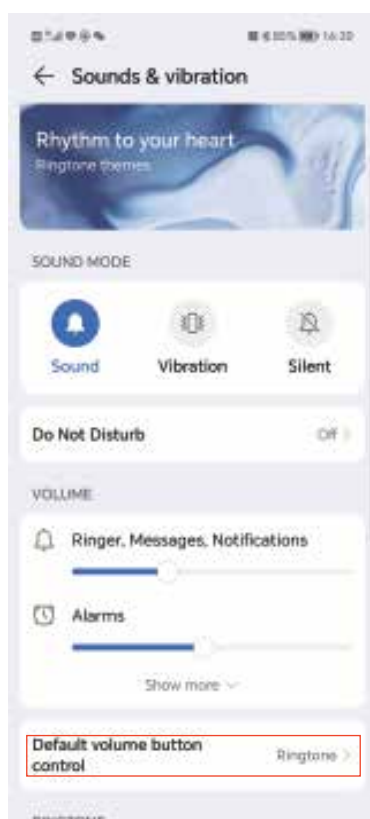
Volume Key Setting Guide

A. Change Volume Key Settings

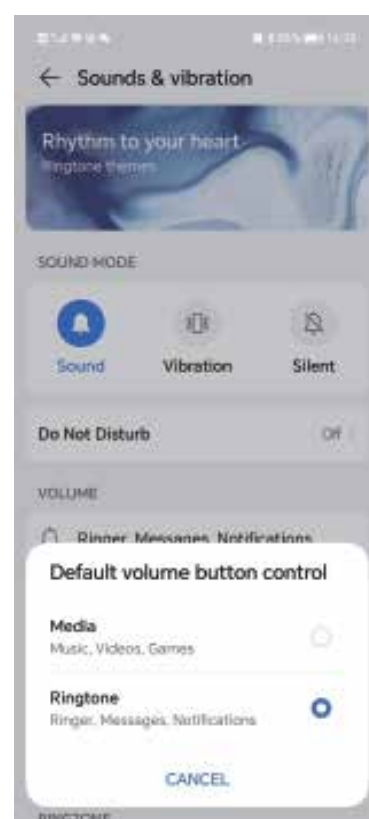
1



2

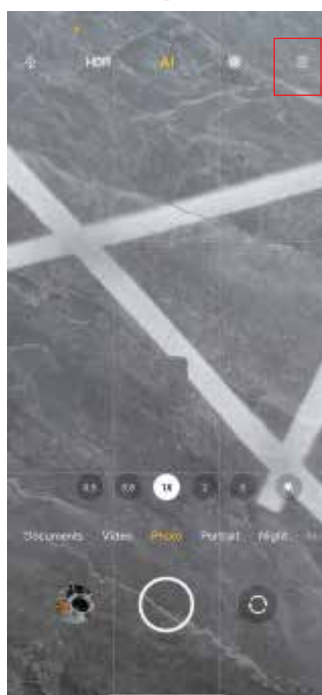


3

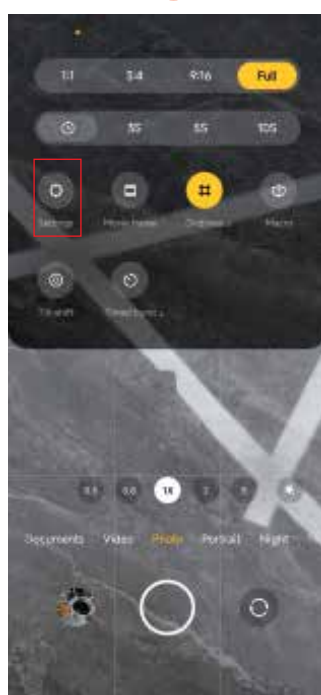


B. Set Volume Key for Capturing

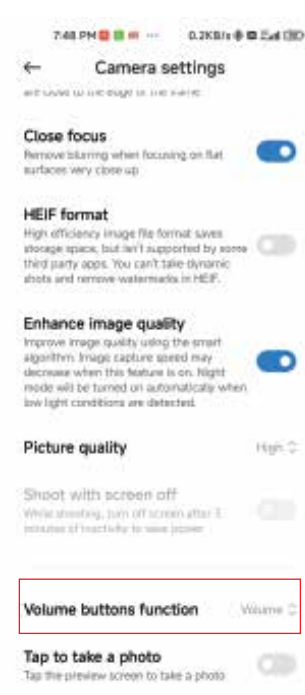
1



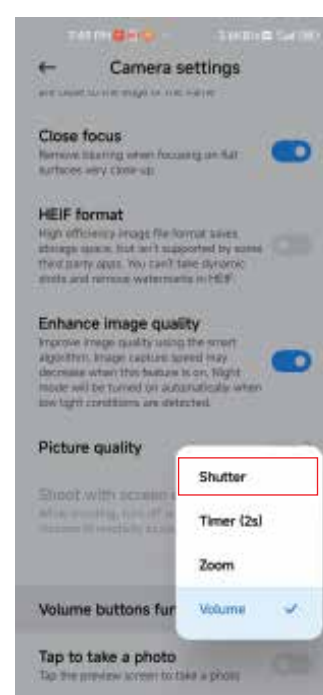
2



3



4



Warranty

Products that you buy directly from our **Porodo** website or shop come with a 24-month warranty.

When you buy **Porodo** products from any of our approved sellers, you only get a 12-month warranty. If you want to extend this warranty, go to our website at **porodo.net/warranty** and fill out the form with your information. Don't forget to upload a picture of the product too. After we've checked and accepted your request, we'll send you an email to confirm that your product's warranty has been extended.

For more info, please check:
porodo.net/warranty

Contact Us

If you have any questions about this Privacy Policy, please contact us at:
info@porodo.net

Website: **porodo.net**

Service Support: **support@porodo.net**

Instagram: **porodo**