



## **Green Lion** **Smart Scent Diffuser**

SKU: GNSMSCDIFBK

# Table of Contents

|                              |   |
|------------------------------|---|
| Features                     | 2 |
| Specifications               | 2 |
| Installation Guide           | 3 |
| Accessories                  | 3 |
| Safety Notes                 | 3 |
| App Connectivity             | 4 |
| A. Download and Installation | 4 |
| B. Connection                | 4 |
| C. Device Sharing Options    | 5 |
| Troubleshooting              | 6 |
| Maintenance                  | 6 |
| Warranty                     | 7 |
| Contact Us                   | 7 |

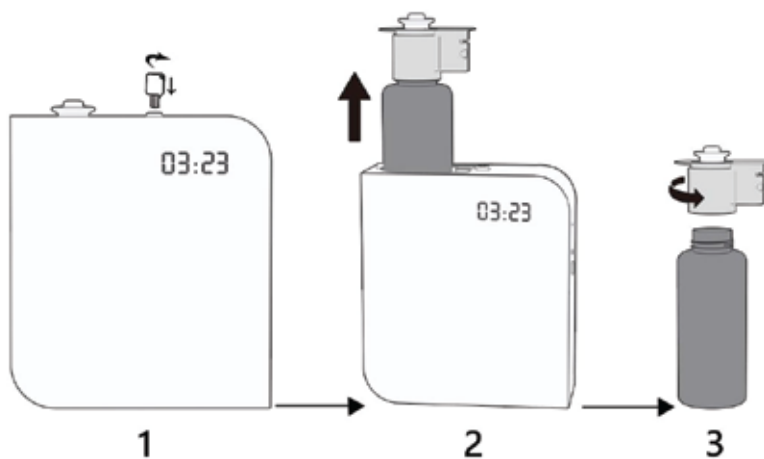
## Features

1. Enjoy soothing aromatherapy to create a calming and pleasant atmosphere in any room.
2. The clear LED display provides easy visibility of settings and time, enhancing usability.
3. Made from premium acrylic, the diffuser ensures durability and a sleek, modern look.
4. Easily control the diffuser's settings and operation remotely through a user-friendly mobile app.
5. Comes with a fragrance bottle, allowing immediate use.
6. Operates quietly to maintain a peaceful environment without disruption.
7. Set the diffuser to run for specific durations with the built-in timer for energy-efficient use.
8. Designed for convenient plug-in use, ensuring continuous operation without the need for batteries.

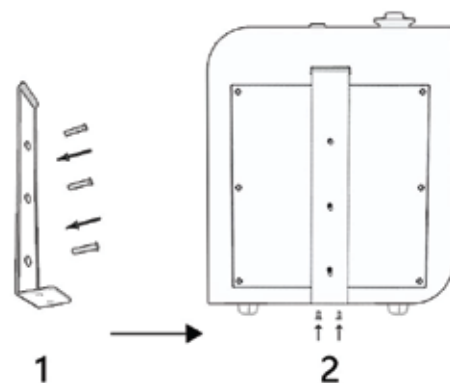
## Specifications

|                |                 |
|----------------|-----------------|
| Model No.      | GL-AD01         |
| Material       | Metal + Acrylic |
| Capacity       | 150 ml          |
| Coverage       | 600m3           |
| Consumption    | 1.8ml/h         |
| Power          | 6.5W            |
| Voltage        | 12V             |
| Power Cord     | UK Plug         |
| Cable Length   | 2 Meters        |
| Product Weight | 2.1 kg          |

## Installation Guide

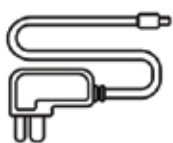


1. Insert the key and turn it 90 degrees counterclockwise to unlock.
2. Gently pull up the atomizer to expose it.
3. Rotate the essential oil bottle counterclockwise to unscrew and open it. Then, add your preferred essential oil.

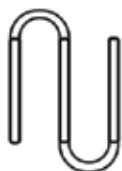


1. Drill holes in the wall at the desired locations. Secure the hanging board to the wall using screws.
2. Insert the device into the notch on the back of the chassis. Secure it by tightening the screw at the bottom.

## Accessories



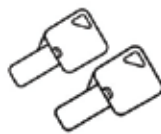
Power Adapter



PE Trachea



Quick Connector



Key \*2



Plastic Wall Plug \*3



Self-tapping Screws \*3

## Safety Notes

1. Always place the device on a flat surface. Avoid tilting it.
2. Do not mix water with the essential oil.
3. Refer to the instruction manual for operation and maintenance guidelines. Do not dismantle or modify the device.
4. If the device has not been used for an extended period, clean the bottle and atomizer core with an alcoholic solution.
5. Clean the atomizer core with an alcoholic solution every two months to maintain optimal performance.



## App Connectivity

### A. Download and Installation

1. Visit the Apple Store, Google Play Store, or Android App Market.
2. Enter "Scent Online" in the search bar to locate the app.
3. Download and install the "Scent Online" app to your device.
4. Use the app to remotely control the diffuser, set working times, and adjust scent concentration levels.



### B. Connection

1. If you are unable to connect the device via the phone app, restore the factory settings by locating the hidden button on the top right of the panel. Press and hold this button for 5 seconds until you hear a beep, indicating a successful reset.
2. Ensure your mobile phone is connected to Wi-Fi and Bluetooth is turned on before starting the operation.
3. After opening the app, register an account and log in.
4. Please grant the app permission to access your location and network settings to ensure the fragrance device can be successfully paired.



1. Click 'Add Device' in the app.



2. Choose the correct device from the list provided.



3. Enable Wi-Fi connection and enter your Wi-Fi password if required.



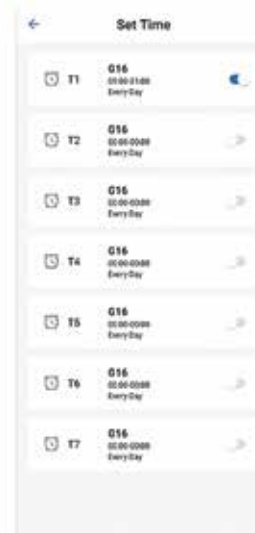
4. Initiate the pairing process.



5. Once the pairing is successful, you can also group your devices for coordinated control.



6. In the operation interface, tap the clock icon to adjust device settings.



7. The device supports 7 timing options and 20-level fragrance concentration adjustments.

## C. Device Sharing Options

1. Go to 'My' -> 'Family Management' -> 'My Home' -> 'Add Members' to include family members in device access.
2. Navigate to 'Model Device Settings' -> 'Device Details' and select 'Copy ID' to share the device ID.
3. Select 'My Device Sharing' -> 'Select Model' and use the QR code provided for easy sharing.



## Troubleshooting

| Problem          | Solution   |
|------------------|--|
| No Atomization   | <ol style="list-style-type: none"><li>1. Ensure the power is on.</li><li>2. Verify that the time settings do not coincide with non-working periods.</li><li>3. Confirm that the air pump is operational.</li><li>4. Check for any leaks at the air intake seal or damages to the seal.</li><li>5. Inspect whether the suction pipe is blocked or detached.</li></ol> |
| Weak Atomization | <ol style="list-style-type: none"><li>1. Check if the intake seal is broken or if the suction pipe is blocked.</li><li>2. Inspect the atomization system and the essential oil bottle seal for any damage or disconnections.</li></ol>   |
| Oil Leakage      | <ol style="list-style-type: none"><li>1. Assess the atomization system for damage.</li><li>2. Check the sealing rings of the atomization system and essential oil bottles for damage.</li><li>3. Ensure the essential oil bottle is securely tightened.</li></ol>  |
| Abnormal Noise   | <ol style="list-style-type: none"><li>1. Verify whether the air pump is loose and secure it if necessary.</li><li>2. Replace the air pump if it is found to be damaged.</li></ol>  |

## Maintenance

1. Open the device and take out the used essential oil bottle.
2. Pour an appropriate amount of alcohol into the essential oil bottle and clean it thoroughly.
3. After cleaning the bottle, add a small amount of alcohol to it, place it back in the device, turn on the device, and let it run for 5 to 10 minutes.
4. Turn off the device after the cleaning process is complete.
5. Remove the bottle, add new essential oil, and securely place it back into the device.

## **Warranty**

Products that you buy directly from our **Green Lion** website or shop come with a 24-month warranty.

When you buy **Green Lion** products from any of our approved sellers, you only get a 12-month warranty. If you want to extend this warranty, go to our website at **<https://www.greenlion.net/warranty>** and fill out the form with your information. Don't forget to upload a picture of the product too. After we've checked and accepted your request, we'll send you an email to confirm that your product's warranty has been extended.

For more info, please check:

**<https://www.greenlion.net/warranty>**

## **Contact Us**

If you have any questions about this Privacy Policy, please contact us at:

Website: **<https://www.greenlion.net/>**

Sales: **[sales@greenlion.net](mailto:sales@greenlion.net)**

Service Support: **[Support@greenlion.net](mailto:Support@greenlion.net)**

Telegram: **[@greenlion\\_global](https://www.telegram.com/@greenlion_global)**

Instagram: **[@greenlion\\_global](https://www.instagram.com/greenlion_global)**