

**Green Lion**

## **Portable Projection Screen With Tripod Stand**

SKU: GNPTPDS120MWH

## Table of Contents

Preface	2
Motorized Screen Setup and Features	2
Wall- Mounted Manual Screen	4
Tripod Screen	5
Specifications	6
Disposal	7
Warranty	7
Contact Us	7

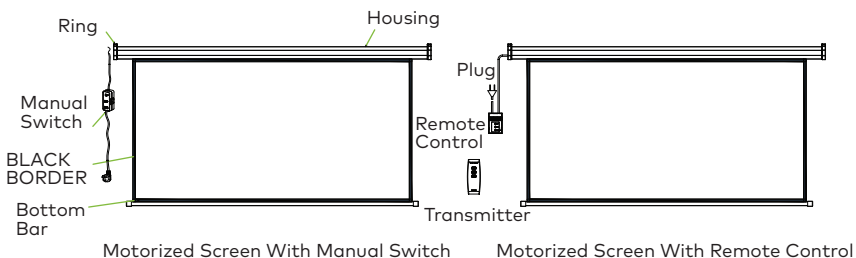
## Preface

All the screens have passed strict quality inspections before delivery. Read this manual carefully to ensure proper usage.

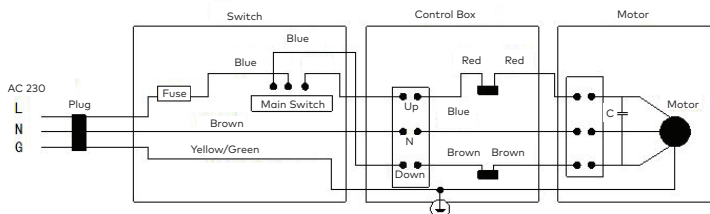
**Attention:** The installation of the screen is important; the electrical connections and setting of the limit switches must be conducted by skilled engineers only.

## Motorized Screen Setup and Features

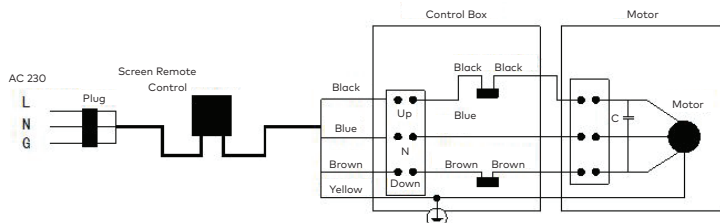
The motorized screen offers a convenient and versatile solution for projection setups, providing both manual and remote control options. This easy-to-use screen features a robust housing and adjustable components, including a black border and bottom bar, which enhance image contrast. With a choice between a manual switch or remote control operation, the motorized screen ensures smooth and effortless screen deployment, making it an ideal choice for both home and professional environments.



If the motorized Screen Work with remote control, please refer to the diagram below for electrical connection.



If the motorized Screen Work with remote control, please refer to the diagram below for electrical connection.

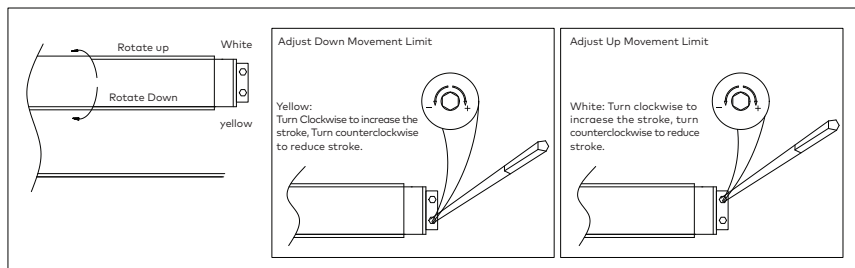


If the remote control does not work well, please check the battery and replace new one.

### Limit Switch Adjustment:

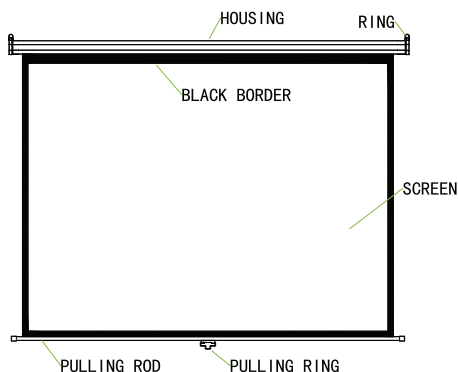
This sec

of the upward and downward movement of the motorized screen. The limit switches define the screen's travel range, ensuring smooth and controlled operation. By rotating the adjustment screws, users can increase or decrease the movement stroke for both upward and downward directions. Please refer to the diagrams below for a clear visual guide on adjusting the UP and DOWN movement limits.



## Useful Instructions:

- a.** The screen should be connected to a suitable power supply (220V/50Hz, 230V/50Hz, or 110V/60Hz, 120V/60Hz). However, the motor's power must match the local voltage and frequency.
- b.** The screen can be operated with or without a remote controller. If a remote control system is required, a radio remote controller is supplied. An infrared type controller is also available for specific needs. Note that these two different control functions cannot be combined in one system.
- c.** Normally, a synchronized motor is installed inside the housing, but a tubular motor is also available for special requirements.
- d.** If the remote control system is not provided, the screen can be operated directly from the control box. Simply press the UP/DOWN/STOP button on the control box. Alternatively, the screen can be operated using the remote controller.



## Wall-Mounted Manual Screen:

1. Structure
2. Installing

Moving parts of the drive must be installed higher than 25mm above the floor. Choose a suitable place for installation. It is best to install two screws on the wall, ensuring the distance between the screws is equal to that of the two rings, and that they are at the same level. The rings must

be strong enough to support more than 25kg of weight.

### 3. Useful Instructions

Hold the pulling ring tightly and pull down the screen slowly, then stop when the top black border comes out (or stop pulling whenever you want to stop). The screen can be auto-fixed. If it cannot be fixed, please operate it again following the same method. After use, pull the screen down slightly and it will go up and back into the housing.

### 4. Warnings

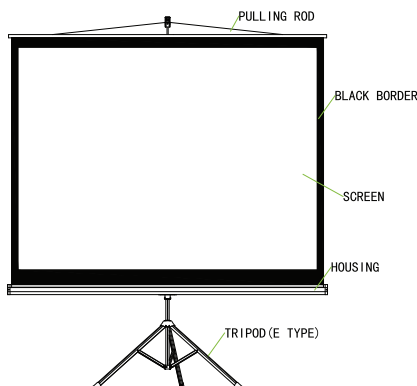
**a.** The screen cannot be folded. Do not use fingers or hard objects to touch the screen surface. Avoid splashing milk, fruit juice, or other chemical substances onto the screen surface. Keep the screen far from high-temperature objects or fire.

**b.** If the screen is dirty, wash it gently with a clean cloth or cotton ball. Avoid using organic solvents to clean the surface.

**c.** When pulling the screen down, it must be done slowly and vertically. Do not pull it roughly. Stop pulling once the black border is out or if the screen gets jammed.

**d.** After using, retract the screen back into the housing to prevent dirt. If not used for a long time, remove the screen from the wall and pack it in a carton.

## Tripod Screen



### 1. Installing

Choose a suitable place for installation. Open the tripod feet first, pull out the upper bar to a suitable height, and lock it in place. Hang the pulling rod above the goose neck and adjust the screen height, then finally fix/lock it at the position you want. After use, release the screen and return it to the housing.

### 2. Useful Instructions

The tripod legs should be placed steadily.

When adjusting the height of the screen, move the upper bar slowly and carefully.

### 3. Warnings

**a.** The screen cannot be folded. Do not use fingers or hard objects to touch the screen surface. Avoid splashing milk, fruit juice, or other chemicals onto the screen. Keep the screen away from high-temperature objects or fire.

**b.** If the screen is dirty, wash it gently with a clean cloth or cotton ball. Do not use organic solvents to clean the screen surface.

**c.** When pulling the screen down, it must be done slowly and vertically. Do not pull it roughly. Stop pulling as soon as the black border is out or when the screen is jammed.

**d.** After using, retract the screen back into the housing to prevent dirt. If not used for a long time, remove the screen from the wall and pack it in a carton.

## Specifications

Screen Size	120 inch diagonal
Projection Surface Size	238x177 cm
Display	4:3 Aspect Ratio
Viewing Angle	160°
Screen Type	Tripod Projector Screen
Screen Material	Matte White

## Disposal

This product must not be disposed of as unsorted household waste. It is important to separate such waste for proper treatment and recycling, in compliance with local waste management regulations.

## Warranty

Products that you buy directly from our **Green Lion** website or shop come with a 24-month warranty.

When you buy **Green Lion** products from any of our approved sellers, you only get a 12-month warranty. If you want to extend this warranty, go to our website at <https://www.greenlion.net/warranty> and fill out the form with your information. Don't forget to upload a picture of the product too. After we've checked and accepted your request, we'll send you an email to confirm that your product's warranty has been extended.

For more info, please check:  
<https://www.greenlion.net/warranty>

## Contact Us

If you have any questions about this Privacy Policy, please contact us at:

Website: <https://www.greenlion.net/>

Sales: [sales@greenlion.net](mailto:sales@greenlion.net)

Service Support: [Support@greenlion.net](mailto:Support@greenlion.net)

Telegram: [@greenlion\\_global](https://www.instagram.com/greenlion_global)

Instagram: [@greenlion\\_global](https://www.instagram.com/greenlion_global)