



Green Lion

**Fragrance
Air Diffuser**

SKU: GNFRAIRDIFRGN

Table of Contents

Preface	2
Specifications	2
Product Overview	2
Instructions for Use	3
Cotton Swab Replacement	5
Precautions	5
Battery Warning	6
Mode Indication	7
Charging Instructions	7
Disposal	7
Warranty	8
Contact Us	8

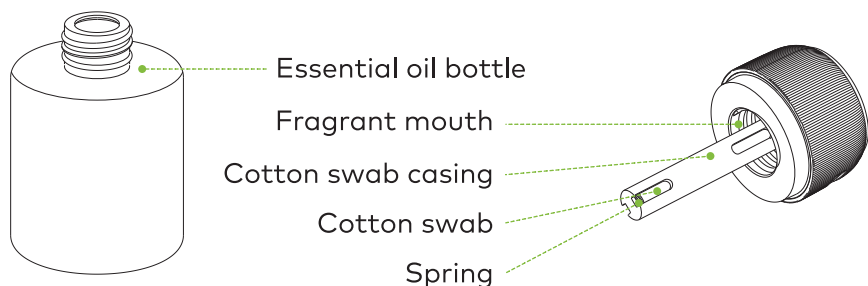
Preface

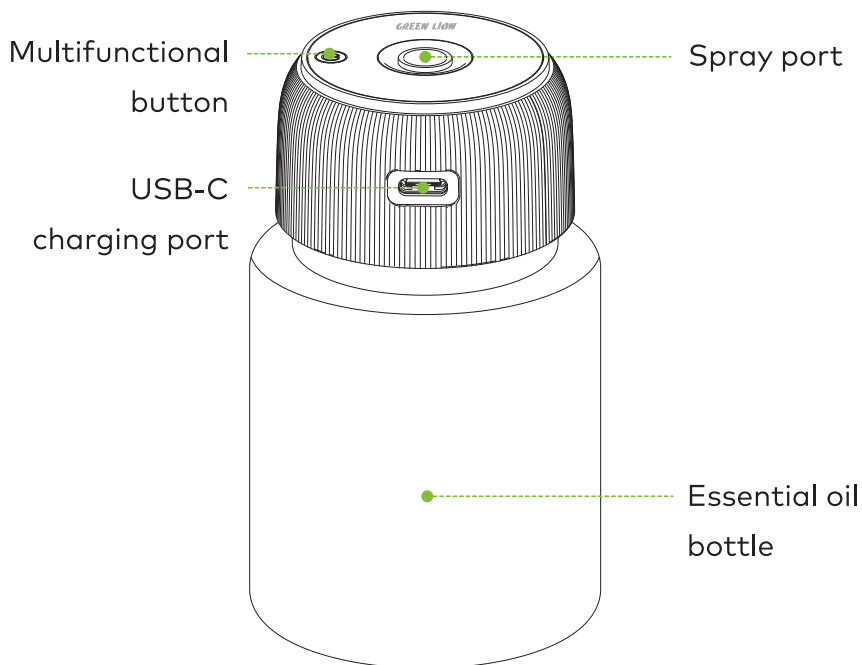
Thank you for choosing this product. For your safety and optimal use, please read the manual carefully before use and keep it for future reference.

Specifications

Input	5.0V=1A
Rated Power	1.5W
Battery Capacity	300mAh/1.11Wh
Material	Glass+PC
Working Time	4 to 5 Hours
Product standard	Q/BX001-2019
Operating Temperature	0°C - 60°C

Product Overview

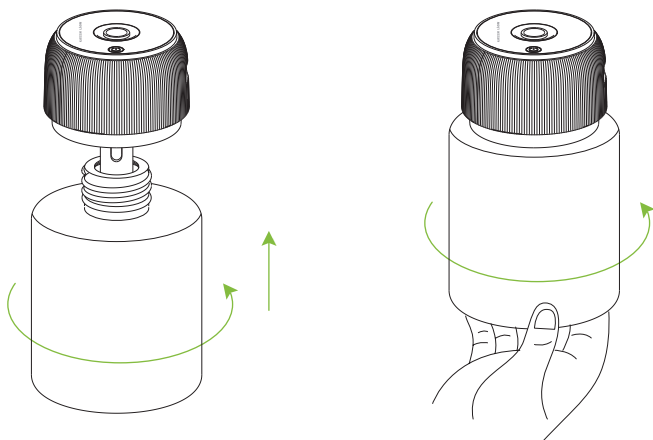




Instructions for Use

1. Rotate the perfume bottle vertically within the aroma diffuser to begin normal use.

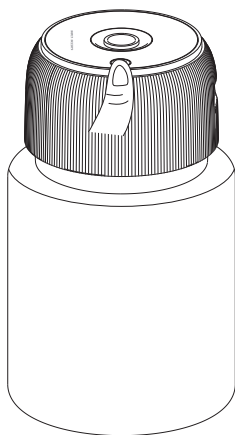
Note: It is forbidden to use non-formula perfumes from our company, as this may block and damage the spray nozzle and affect product performance.



On/Off: Press the on button for 3 seconds to turn on/off.

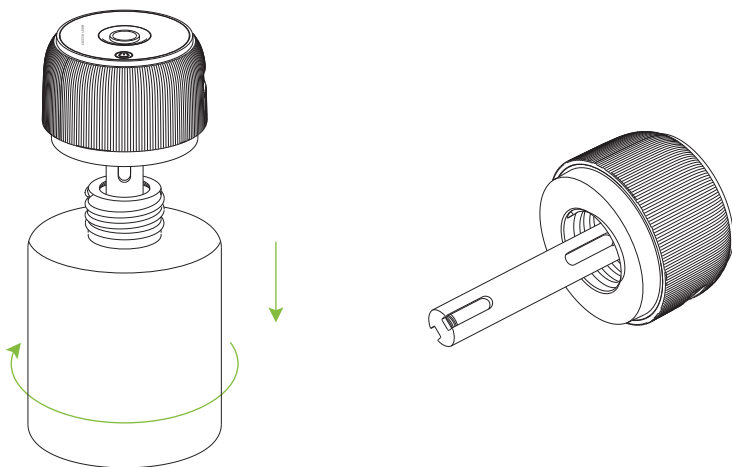
Switch mode: Click the button to switch between fragrant, light perfume, and continuous modes.

Note: If the spray volume decreases, gently wipe the spray port with a cotton swab and replace it with a new one. Regularly cleaning the cotton swab or switching modes and using high-frequency vibration can help restore performance.



Cotton Swab Replacement

Twist the perfume bottle to remove the cotton swab and casing. Insert the replacement cotton swab into the casing and twist it into the incense inlet hole. Spin on the perfume bottle and use it normally.



Precautions

1. If the spray volume decreases, gently wipe the spray port with a cotton swab and replace it with fragrance. Regular cleaning of the cotton swab or frequently switching modes can help recover performance through high-frequency vibration cleaning.
2. Do not use non-formula perfumes from our company to avoid blocking the spray nozzle and damaging the product's functionality.
3. Strictly follow the operating steps to prevent improper use that could

lead to liquid leakage, which may corrode the surface.

4. Avoid collisions and do not scratch the product's surface with sharp objects to prevent damage.

5. Always store the product vertically during use to prevent it from tipping and to avoid perfume overflow.

6. Keep the perfume sealed and away from direct light before use. Do not open when not in use.

7. The perfume is not edible. Keep it away from children and pets to prevent accidental ingestion.

8. The perfume should not come into contact with skin or eyes. In case of contact, rinse with clean water or seek medical treatment.

9. As the perfume gradually volatilizes and decreases over time, replace the fragrance in a timely manner to ensure continued use.

10. Do not let the perfume come into contact with oily paint, leather, or fabric. If spilled, clean it immediately to avoid corrosion or surface damage.

Battery Warning

1. Do not disassemble, crush, or expose the battery to fire. If the battery becomes severely swollen, cease use immediately.

2. Avoid placing the battery in high-temperature environments.

3. Improper battery replacement may result in a risk of explosion. Only use batteries of the same type or an equivalent for replacement.

4. Batteries (whether pack or combination type) must not be exposed to heat sources such as direct sunlight, fire, or other forms of excessive heat.

5. The battery should not be used if it has been submerged in water.

6. This product contains batteries. Please dispose of them separately from household waste.

Mode Indication

1. The default mode (blue light) activates upon initial use. It sprays once every 30 seconds for 1 second. After 5 minutes, the sensor will automatically enter standby mode and activate again with the car's vibration.
2. Press the switch twice to enter fragrance mode (green light). The device will spray every 5 minutes for 1 second. After 5 minutes, the sensor will enter standby mode and activate again with car vibration.
3. Press the power button three times to activate light perfume mode (yellow light). It sprays every 15 minutes for 1 second. After 5 minutes, the sensor will automatically enter standby mode and turn on with the car's vibration.
4. Double-click the button to turn on all 3 lights and activate continuous spray mode. Press the button again to deactivate this mode. This mode is ideal for quickly removing odors from the car.

Charging Instructions

1. During continuous charging, the three indicator lights cycle in sequence, and the fragrance indicator remains on once the battery is fully charged.
2. When the battery power is lower than 10%, the three indicator lights will flash. If the power is below 3%, the machine will automatically shut down.

Disposal

This product must not be disposed of as unsorted household waste. It is important to separate such waste for proper treatment and recycling, in compliance with local waste management regulations.

Warranty

Products that you buy directly from our **Green Lion** website or shop come with a 24-month warranty.

When you buy **Green Lion** products from any of our approved sellers, you only get a 12-month warranty. If you want to extend this warranty, go to our website at **<https://www.greenlion.net/warranty>** and fill out the form with your information. Don't forget to upload a picture of the product too. After we've checked and accepted your request, we'll send you an email to confirm that your product's warranty has been extended.

For more info, please check:

<https://www.greenlion.net/warranty>

Contact Us

If you have any questions about this Privacy Policy, please contact us at:

Website: **<https://www.greenlion.net/>**

Sales: **sales@greenlion.net**

Service Support: **Support@greenlion.net**

Telegram: **[@greenlion_global](https://t.me/greenlion_global)**

Instagram: **[@greenlion_global](https://www.instagram.com/greenlion_global)**