



Green Lion
Carpet Cleaner Pro
with 15KPa Powerful Suction

SKU: GNCRCL600WBL

Table of Contents

Features	2
Safety Precautions	2
Prohibitions	4
Caution	5
Schematic View	5
Before Use	6
Instructions for Use	7
Cleaning Stubborn Stains	8
Cleaning and Maintenance	8
Troubleshooting	10
Specifications	11
Warranty	12
Contact Us	12

Features

1. Equipped with separate tanks for clean and dirty water to ensure efficient cleaning without cross-contamination.
2. Provides powerful suction to effectively lift dirt, debris, and stains from carpets and upholstery.
3. Capable of deep cleaning to remove tough stains and embedded dirt, leaving surfaces looking refreshed.
4. Designed for extended reach, allowing you to clean hard-to-reach areas with ease.
5. Compact and space-saving design makes it convenient to store when not in use.
6. Comes with a long power cord, offering flexibility and mobility to clean larger areas without needing to change outlets.

Safety Precautions

1. Use water below 40°C to effectively remove dirt from the unit.
2. Do not use the machine to clean items unsuitable for water cleaning, such as arts, crafts, fibers, and delicate surfaces.
3. Keep the unit upright when filled with water to prevent spills.
4. Stop the machine and empty the dirty water tank if it reaches the maximum capacity line.
5. Ensure that the detergent is safe and suitable for your cleaned items.
6. If the unit stops due to a blockage caused by long hair or excessive foam, turn it off, clear the blockage, and empty the dirty water tank before resuming use.
7. Do not use foam-producing detergents in this machine.
8. Ensure that any user, especially children, is supervised while using the machine.
9. Do not use liquid-like pesticides, hair dyes, or lubricants in the machine.

10. Avoid using the machine to pick up flammable or combustible materials such as gasoline or cigarettes.
11. Do not use if the hose is damaged, and avoid bending, stomping, or pulling it harshly.
12. Do not block the air outlet to ensure proper heat release.
13. Stop using the machine if it makes unexpected noises or smells.
14. Do not open, repair, or alter the machine yourself.
15. Avoid using the machine in heavy wind or rain.
16. Do not submerge the machine in water or other liquids to prevent fire or electric shock.
17. Avoid using the machine to vacuum up potentially infectious particles.
18. Ensure the dirty water tank is correctly installed before use.
19. If the power cord is damaged, have it replaced by the manufacturer or a professional to prevent hazards.
20. This appliance is suitable for use by children aged 8 years and older, as well as individuals with limited physical, sensory, or mental abilities, provided they have been given appropriate supervision and instructions on how to use the appliance safely and are aware of the associated risks. Children should not play with the appliance. Cleaning and maintenance by children must be supervised.
21. This appliance can operate normally at both 50Hz and 60Hz without needing any adjustments to the frequency.

Correct Disposal



This symbol indicates that this product should not be discarded with regular household waste across the EU. To prevent potential harm to the environment or human health from uncontrolled waste disposal, please recycle it responsibly to support the sustainable reuse of material resources. To return your used device, use the return and collection systems available or contact the retailer where you purchased the product. They will ensure the product is recycled in an environmentally safe manner.

22. This machine is primarily for wet use; avoid using it to pick up large quantities of dust.
23. Empty and dry the dirty water tank, clean the water tank, and hose interior if temperatures drop significantly to prevent freezing.
24. Remove any foreign objects from the hose if it becomes blocked before using the machine again.
25. Use the power cord and plug properly.
26. Regularly clean the plug.
27. Ensure the plug is fully inserted when in use.
28. Unplug the machine if it will not be used for an extended period.
29. Always unplug the machine before maintenance, inspection, or relocation.
30. Never plug in or unplug the machine with wet hands.
31. Keep the plug out of reach of children.
32. Avoid damaging the power cord. Do not yank the plug out when moving the machine.
33. Do not use the machine if the power cord or plug is damaged.
34. Avoid using overloaded electrical sockets.
35. In case of any malfunctions, immediately cut off the power and unplug the machine.

Prohibitions

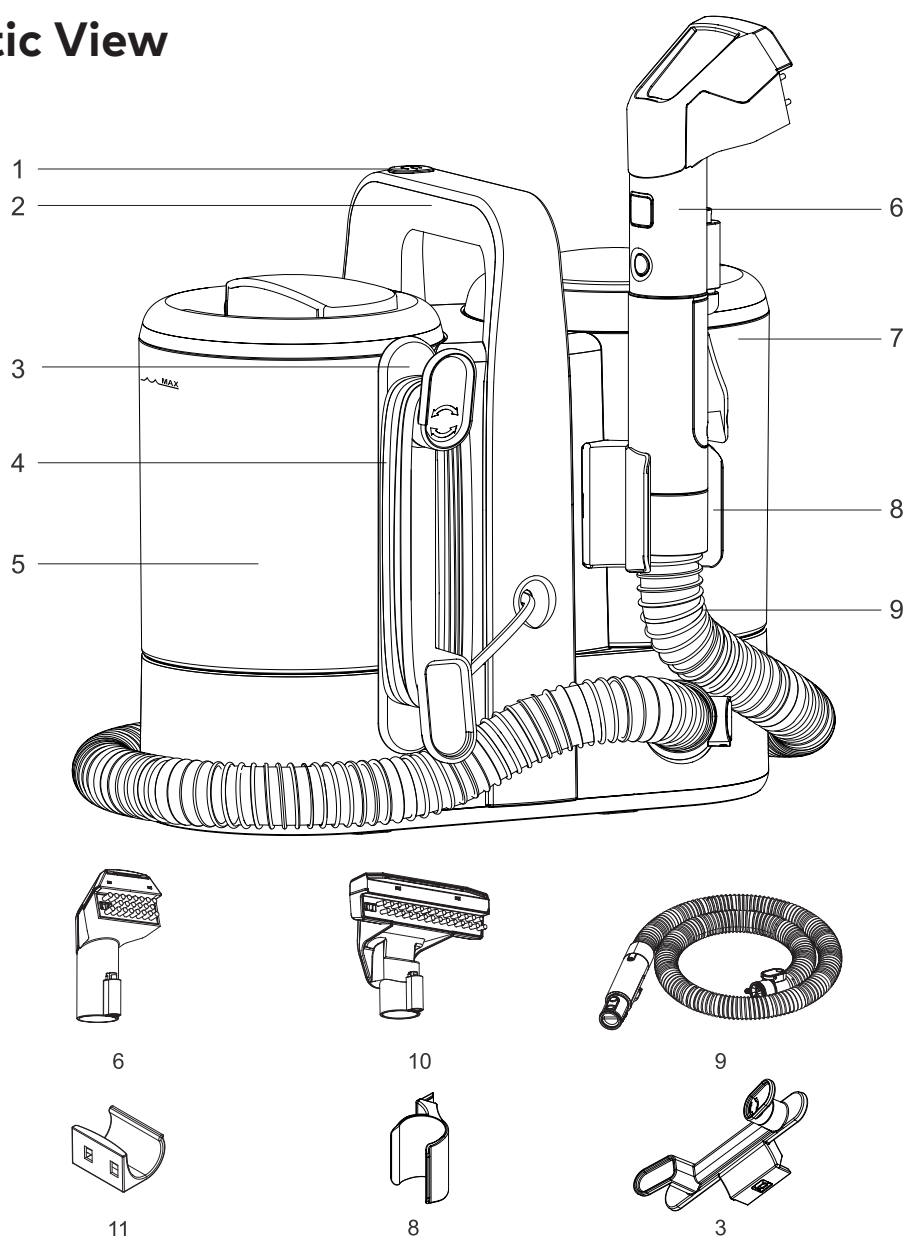
Do not use the vacuum cleaner to pick up the following materials:

1. Do not pick up dry dust.
2. Avoid vacuuming large amounts of powder.
3. Do not vacuum large amounts of sand and stones.
4. Avoid picking up large quantities of rubbish.
5. Do not vacuum metal objects like needles and pins.
6. Do not pick up large polybags or stockings.
7. Avoid vacuuming items that can easily clog the machine.

Caution

1. Use this machine only for cleaning purposes.
2. This machine is intended for household use only.
3. Keep the machine away from fire or heating equipment.
4. Stop using if the water-spray nozzle is blocked.
5. Stop using if it picks up foreign objects.
6. Empty the tanks if there is a blockage before using again.
7. Do not tilt or ride on the machine.
8. Keep out of reach of children.
9. Not suitable for outdoor use.
10. Do not continue to use if the suction opening is blocked.

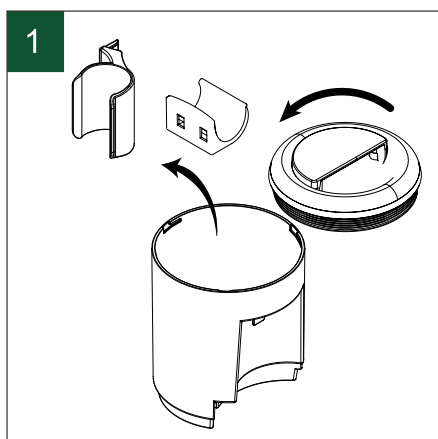
Schematic View



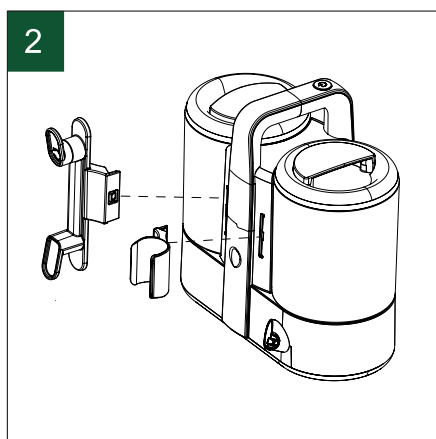
1. Switch
2. Handle
3. Power cord hook
4. Power cord
5. Clean water tank
6. Small brush

7. Dirty water tank
8. Hook for brush
9. Hose
10. Big brush
11. Hose hook

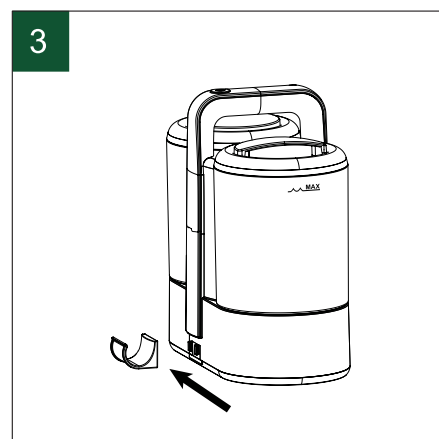
Before Use



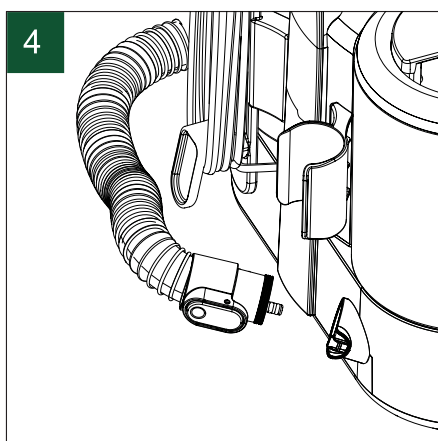
1. Open the clean water tank by turning the lid counter-clockwise.



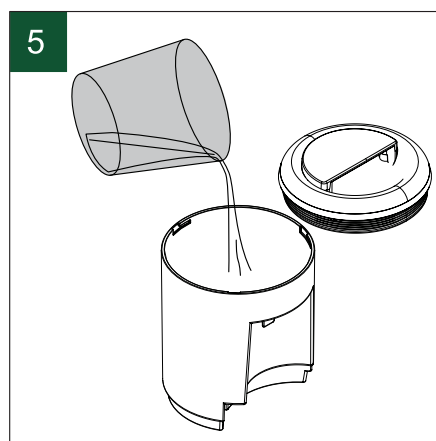
2. Insert the handle and cable hook into the machine.



3. Position the hose hook from right to left until you hear it click into place, indicating it is securely fastened.

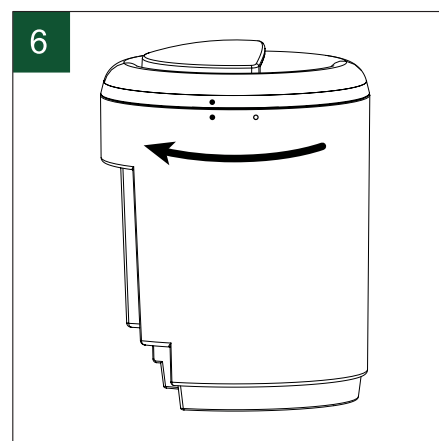


4. Insert the hose into the machine, ensuring the locking tab is securely fastened.

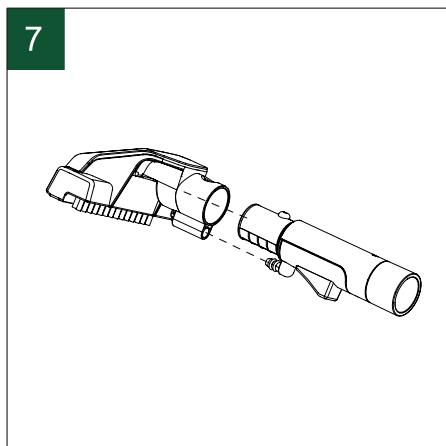


5. Pour the appropriate amount of water into the clean water tank.

Warning: Do not exceed the maximum water level line.



6. Align the solid circle of the tank cover with the hollow circle on the tank, turn the cover clockwise until it clicks into place, indicating it is locked, and then insert the tank into the machine.

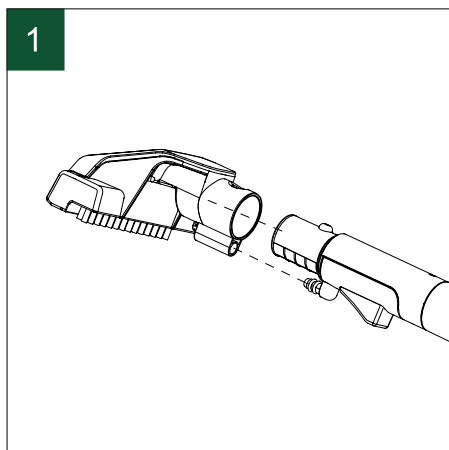


7. Assemble the brush according to your preference.

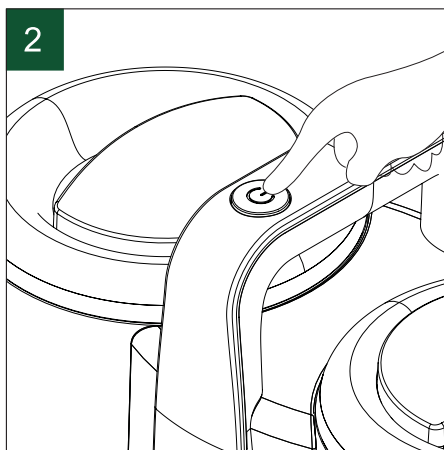


8. Coil the hose around the base of the machine and secure it with the hook.

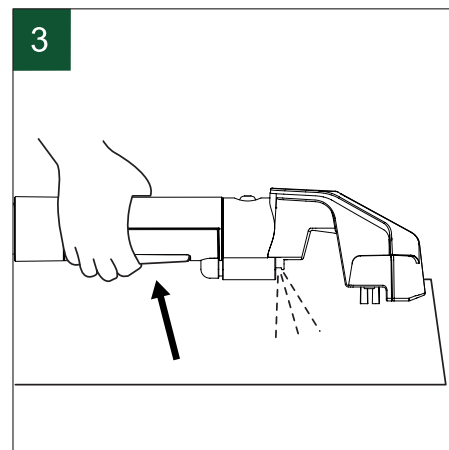
Instructions for Use



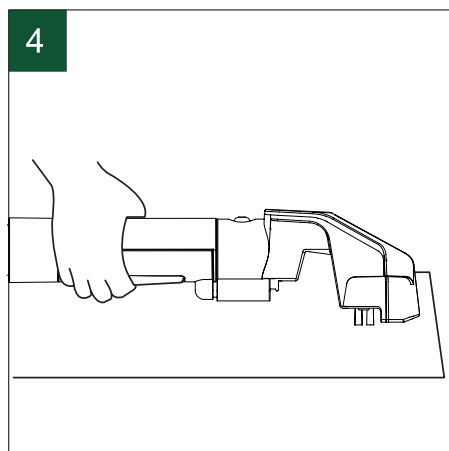
1. Choose the appropriate cleaning tool for the surface or floor type and attach it to the hose handle.



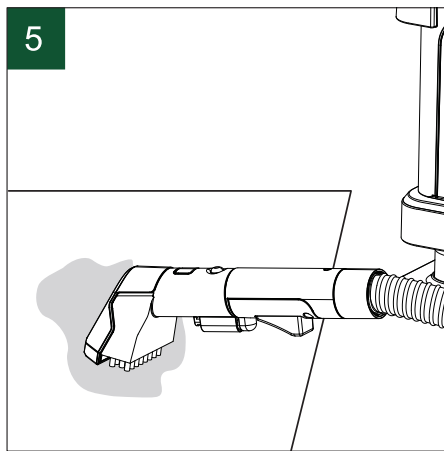
2. Connect the power cord and press the ON/OFF button.



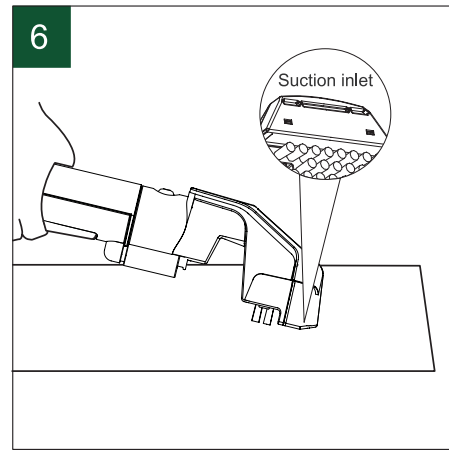
3. Press the water-spray button to release water.



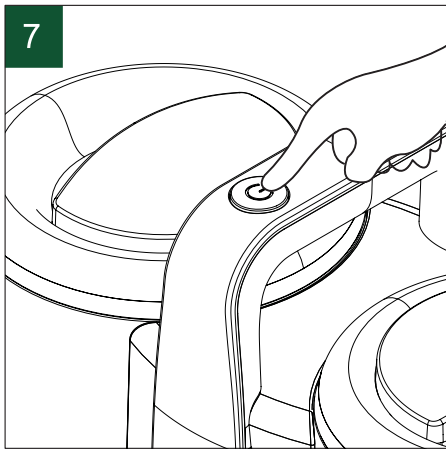
4. Move the brush back and forth over the stain to clean it.



5. Always remove excess liquid from spills before applying any water or cleaning solution.

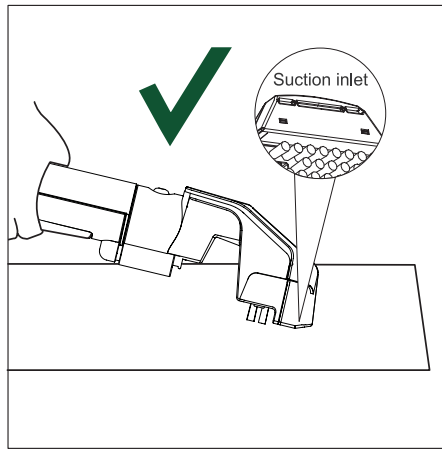


6. Position the brush over the stain and press down to suction up all the dirty water.

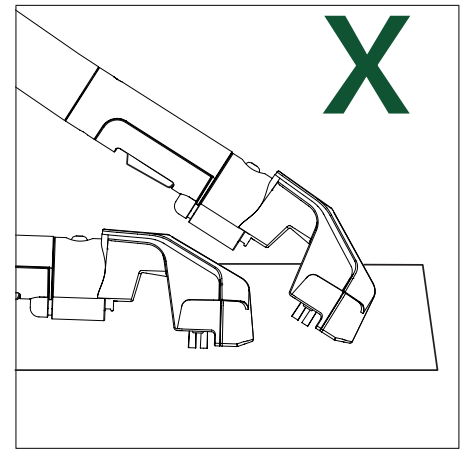


7. Turn off the power after cleaning. Coil the hose around the base and secure it with the hook.

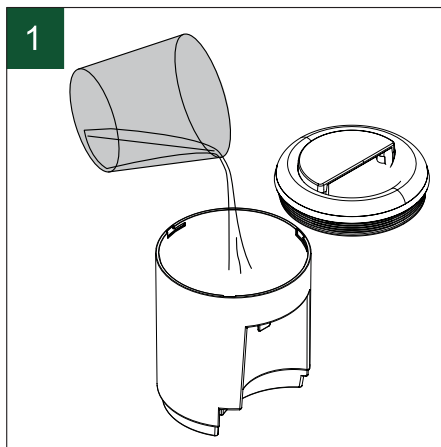
Note: Always clean the dirty water tank after use to prevent odors.



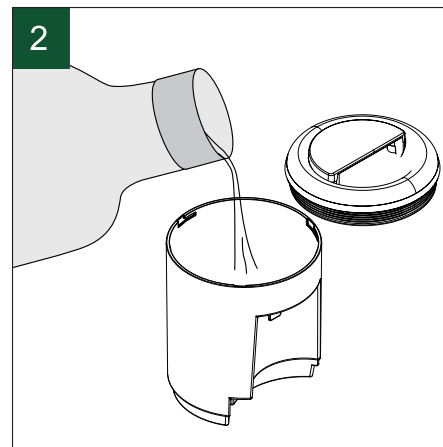
Important: Incorrectly tilting the hand tool either too much or too little can lead to poor water suction.



Cleaning Stubborn Stains



1. Open the water inlet cap and fill the clean water tank.

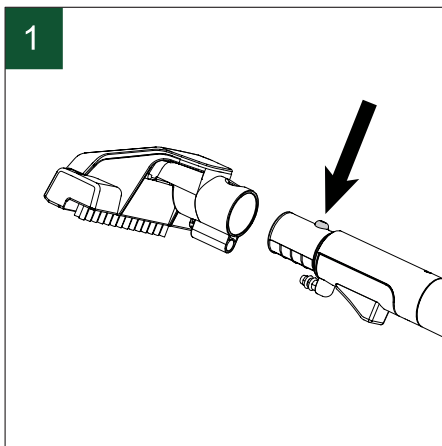


2. Add the required amount of detergent to the tank.

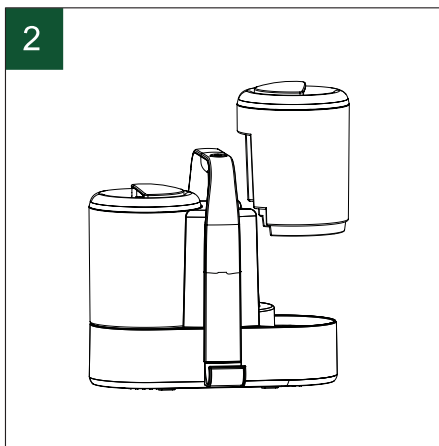
Cleaning and Maintenance

To extend the lifespan of your spot and stain cleaner and prevent clogs or other issues, follow this guide:

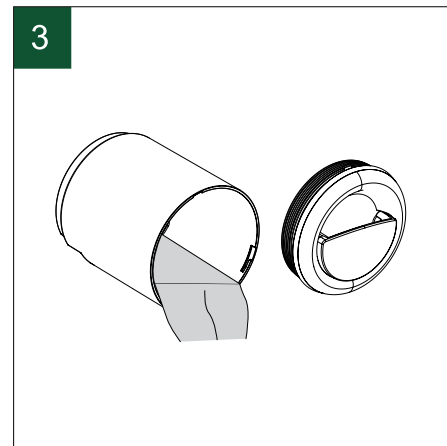
- 1.** Always clean the product after it has been turned off for a brief period.
- 2.** Caution: Never clean the cleaner device or any of its parts while it is plugged in and powered on.
- 3.** Clean the appliance by wiping it with a damp soft cloth to remove any dust from the exterior.
- 4.** Use a dry cloth to clean the power cord.
- 5.** To prevent musty odors, thoroughly clean and air dry both tanks after every use before storing.



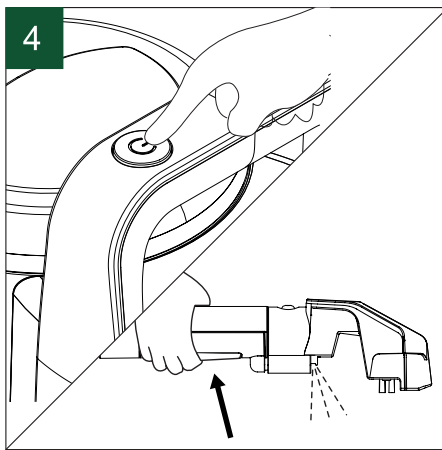
1. Press the release button on the wash tool and pull to detach it from the hose



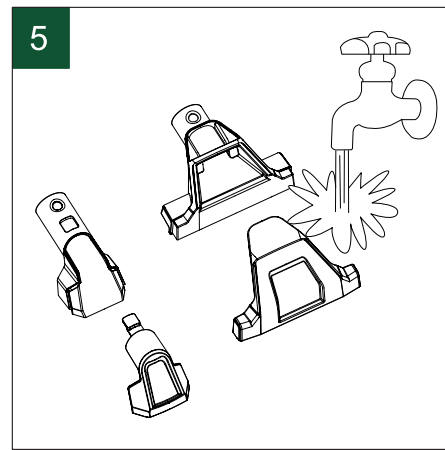
2. Remove the clean water tank from the main unit.



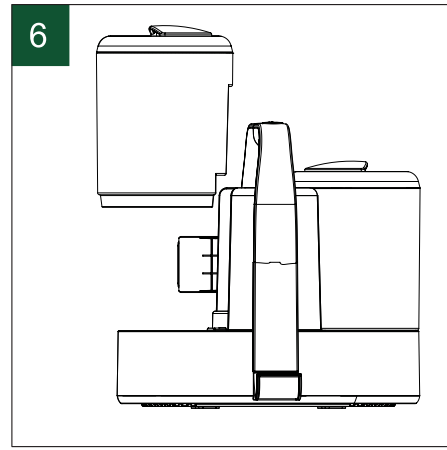
3. Empty the water from the tank.



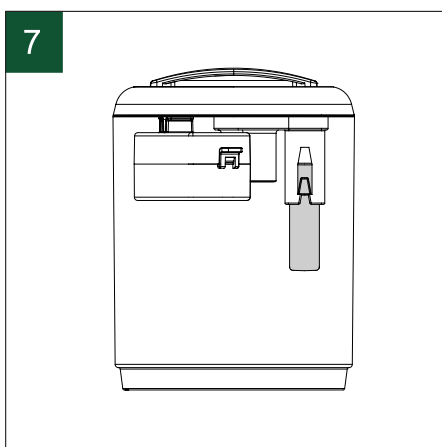
4. Reinstall the empty clean water tank and turn on the machine. Press the water-spray button to remove any remaining water from the tank.



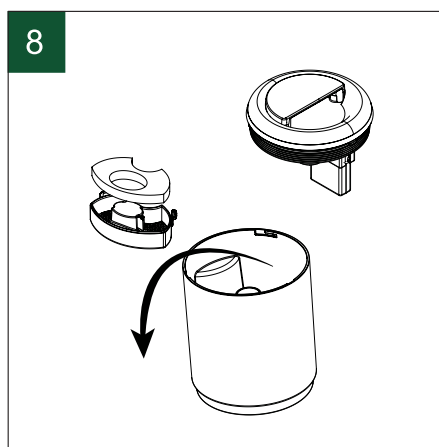
5. Remove the brush cover from the wash tool and rinse it under the tap to clean. To put it back, position the cover on the wash tool and press until it clicks into place.



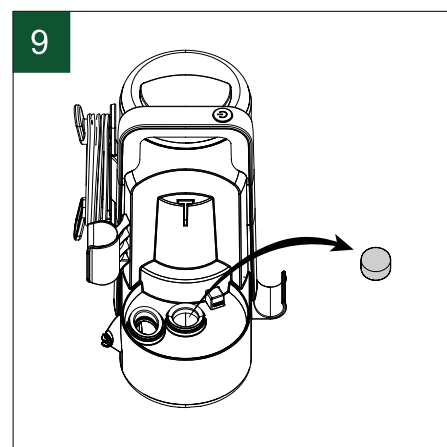
6. Remove the dirty water tank from the main unit for cleaning.



7. Empty the dirty water tank after each use or when the water level reaches the maximum fill line. The float inside will stop suction if the tank is full.



8. Open the dirty water tank and remove the cover and filter.



9. Remove the small foam filter and rinse it under the tap to clean. Make sure it is completely dry before replacing and using it in the appliance.
Tip: Place it on or near a radiator to help it dry faster.



10. Clean all parts using only warm water. Do not use dish-washing liquids or any other chemicals.



11. Reinstall the dirty water tank back onto the cleaner.

Troubleshooting

Before using the product, please carefully read this User Manual to guarantee correct usage and keep it secure for future reference.

Problem	Possible Cause	Solution
Not working after powering on.	The plug is not fully inserted. The power cord is damaged.	Turn it off, ensure the plug is securely inserted, or contact the authorized service professionals.
No water or only a small amount of water comes out when pressing the water-spray button.	The water spray nozzle is blocked. The handle or pump is damaged.	Remove the brush, clean the spray nozzle, or contact the authorized service professionals.
No suction or reduced suction power.	The machine is not turned on. The dirty water tank is full. The hose is damaged or in poor condition. The intake sponge is blocked.	Turn on the power. Empty and clean the dirty water tank to use it again. Check the hose to ensure it is in good condition. Clean or replace the sponge.

Specifications

Model No.	GL-SC01
Material	ABS+PP
Motor Power	600W
Voltage	220-240V
Noise Level	≤80 dB
Clean Tank Capacity	1500 ml
Dirty Tank Capacity	800 ml
Suction Power	15kPa
Air Flow	11 l/s
Air Power	55W
Power Cord	UK Plug
Cable Length	5m
Hose Length	1.2m
Product Weight	4.1 kg
Product Size	326×173×306 mm
IP rating	IPX4

Warranty

Products that you buy directly from our **Green Lion** website or shop come with a 24-month warranty.

When you buy **Green Lion** products from any of our approved sellers, you only get a 12-month warranty. If you want to extend this warranty, go to our website at **<https://www.greenlion.net/warranty>** and fill out the form with your information. Don't forget to upload a picture of the product too. After we've checked and accepted your request, we'll send you an email to confirm that your product's warranty has been extended.

For more info, please check:

<https://www.greenlion.net/warranty>

Contact Us

If you have any questions about this Privacy Policy, please contact us at:

Website: **<https://www.greenlion.net/>**

Sales: **sales@greenlion.net**

Service Support: **Support@greenlion.net**

Telegram: **[@greenlion_global](https://t.me/greenlion_global)**

Instagram: **[@greenlion_global](https://www.instagram.com/greenlion_global)**