



**Green Lion**  
**Air Cooler with Air Purification**

SKU: GNAIRCOLPS

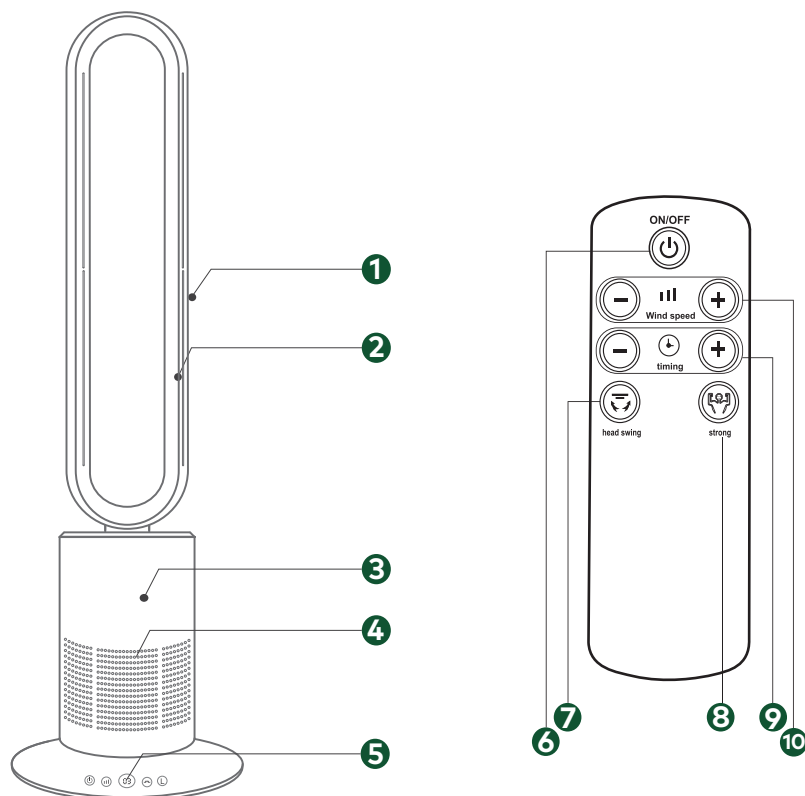
# Table of Contents

Features	2
Schematic View	2
Specifications	3
Filter Instructions	4
Changing the Filter	4
Air Vents	4
A. Operation Overview	4
B. Cleaning Air Vent	5
Safety Precautions	5
Material Components	6
Warranty	7
Contact Us	7

## Features

1. Features an 80° wide angle oscillation to evenly distribute air throughout the room.
2. Equipped with a long-lasting brushless motor that enhances durability and efficiency.
3. Incorporates a bladeless, modern design for safety and an aesthetically pleasing look.
4. Features sensitive touch keys and an infrared remote control for easy operation.
5. Includes a smart timing feature that allows you to schedule operation times.
6. Comes with a remote control for convenient adjustment from a distance.
7. The brushless motor ensures a quieter operation and increased longevity.
8. The device is leafless and safe, eliminating the risk of injuries from moving parts.
9. Offers 10 levels of natural wind settings to customize airflow intensity according to your preference.

## Schematic View



1. Output Channels	6. ON/OFF
2. Outlet Circle	7. Swing
3. Main Body	8. Timing
4. Input Channels	9. Powerful Wind
5. View Screen	10. Speed Adjustment

## Specifications

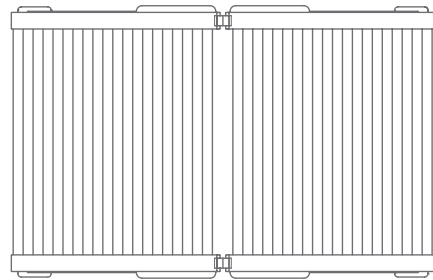
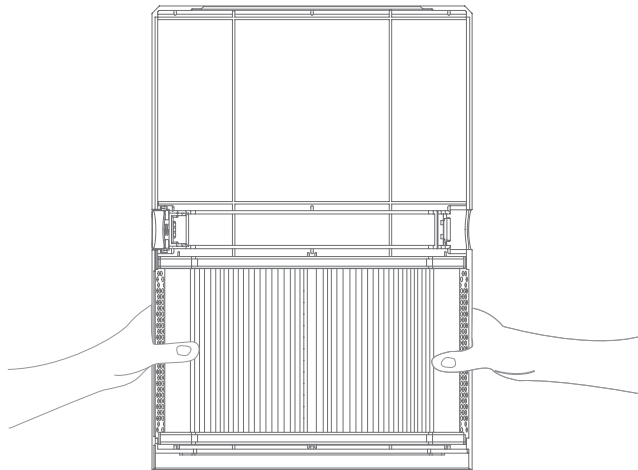
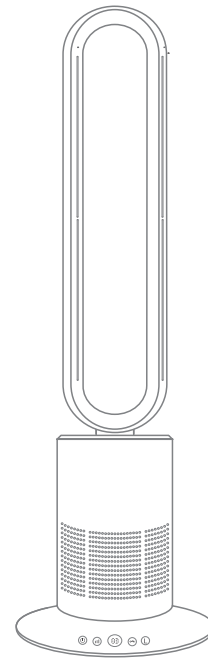
Model No	GL-CL36B
Voltage	220-240V~, 50Hz
Rated power	45W
RPM	6800
Material	ABS
Wind speed	1-10 Speed Levels
Airflow rotation	80° Body Sway
Timer	1-9h
HEPA-filter	HEPA 11
Filter applicable area	15-20m <sup>2</sup>
Filter life cycle	3-6 months
Remote	3-5m, Intelligent Infrared
Power source	UK plug
Product size	1030×265×185mm

## Filter Instructions

The HEPA mesh filter has a service life of 3 to 6 months and must be replaced regularly as it cannot be cleaned.

## Changing the Filter

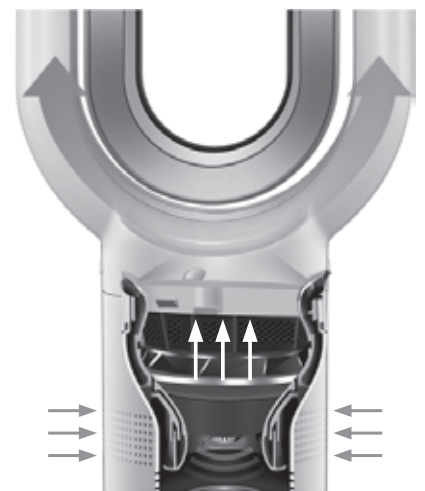
To remove the filter, pull the front handle outward. For installation, align the filter screen with the groove and press it inside.



## Air Vents

### A. Operation Overview

The air cooler operates differently from traditional fans. it doesn't slice air but instead draws air through the bottom inlet, using the motor's high-speed operation and turbocharging to generate strong kinetic energy, creating a stable and robust high-speed airflow.



## B. Cleaning Air Vent

To clean the air vents and outlet, first turn off the power supply and unplug the device. Check for dust at the air outlet and air inlet, and then use a soft brush to remove the dust.

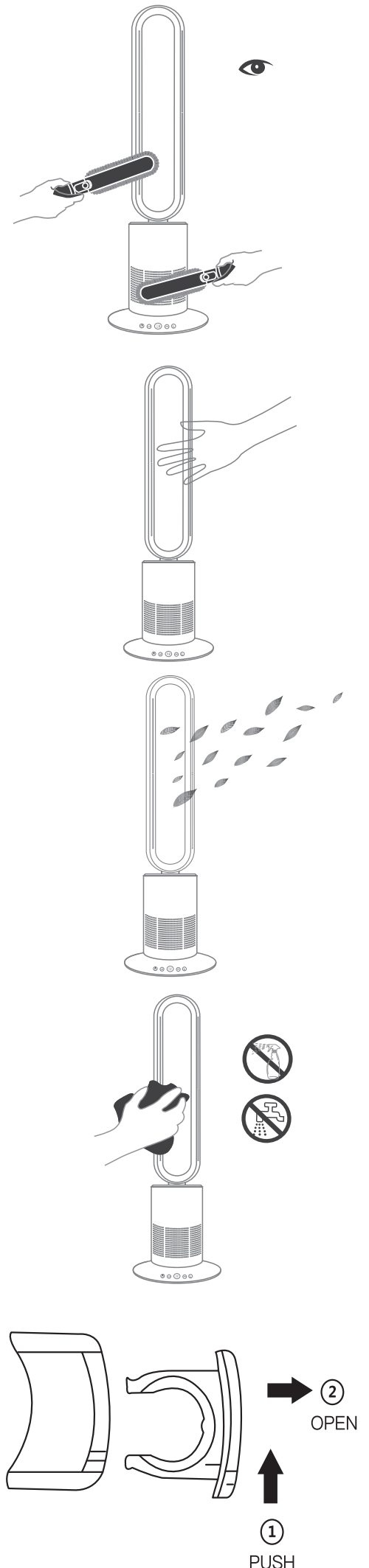
## Safety Precautions

1. The leafless fan operates on the principle of turbocharging, eliminating the need to worry about safely touching the fan blades.

2. The high-efficiency HEPA filter effectively captures particulate matter such as smoke and dust, significantly improving air quality. It is suitable for areas ranging from 10 to 40 square meters.

3. To clean, turn off the power, unplug the device, and wipe it with a clean, damp cloth. Do not use detergents or polishing agents.

4. Turn over the remote and follow the steps shown in the image to remove the battery tray, replace the battery with the same type, and ensure the positive and negative poles are correctly aligned.



## Material Components

Part name	Toxic and harmful substances or elements					
	Pb	Hg	Cd	Cr(VI)	PBB	PBDE
Resistor Component	O	O	O	O	O	O
Capacitor Component	X	O	O	O	O	O
High voltage Capacitor	X	O	O	O	O	O
Circuit	O	O	O	O	X	X
Circuit Board	O	O	O	O	O	O
LED Display	X	O	O	O	O	O
Solder	X	O	O	O	O	O
Internal wiring	X	O	O	O	O	O
Terminals	O	O	O	X	O	O
Plastic case	O	O	O	O	O	O
Spray paint	O	O	O	O	O	O
Power cord	X	O	O	O	O	O
Screw	O	O	O	X	O	O
Fuse	X	O	O	O	O	O
Main motor	O	X	O	O	O	O
Swing head synchronous motor	O	O	O	O	O	O
Remote control	O	X	O	O	O	O
Label sticker	O	O	O	O	O	O

This form adheres to SJ/11364 guidelines. 'O' indicates that the content of toxic and harmful substances in all homogeneous materials of the component is below the limit specified in GB/T26572. 'X' denotes that the content of toxic and harmful substances in at least one homogeneous material of the part exceeds the specified limit in GB/T26572.

**Note:** Some parts marked with 'X' contain harmful substances above the standard due to current limitations in industry technology, making substitution or reduction challenging at this time.

## **Warranty**

Products that you buy directly from our **Green Lion** website or shop come with a 24-month warranty.

When you buy **Green Lion** products from any of our approved sellers, you only get a 12-month warranty. If you want to extend this warranty, go to our website at **<https://www.greenlion.net/warranty>** and fill out the form with your information. Don't forget to upload a picture of the product too. After we've checked and accepted your request, we'll send you an email to confirm that your product's warranty has been extended.

For more info, please check:

**<https://www.greenlion.net/warranty>**

## **Contact Us**

If you have any questions about this Privacy Policy, please contact us at:

Website: **<https://www.greenlion.net/>**

Sales: **[sales@greenlion.net](mailto:sales@greenlion.net)**

Service Support: **[Support@greenlion.net](mailto:Support@greenlion.net)**

Telegram: **[@greenlion\\_global](https://t.me/greenlion_global)**

Instagram: **[@greenlion\\_global](https://www.instagram.com/greenlion_global)**