

porodo



Porodo Lifestyle

**Air & Mist Portable Cooling Fan
with Night Light and Oscillation**

SKU: PD-LSMFAN

Table of Contents

Features	2
Specifications	2
Schematic View	3
Instructions for Use	3
Indicator Guide	4
Charging	5
Attention	5
Replacing the Filter	6
Insert Ice Tray	6
Package Contents	6
Warranty	7
Contact Us	7

Before installing and using the product, please carefully read this User Manual to guarantee correct usage and keep it secure for future reference.

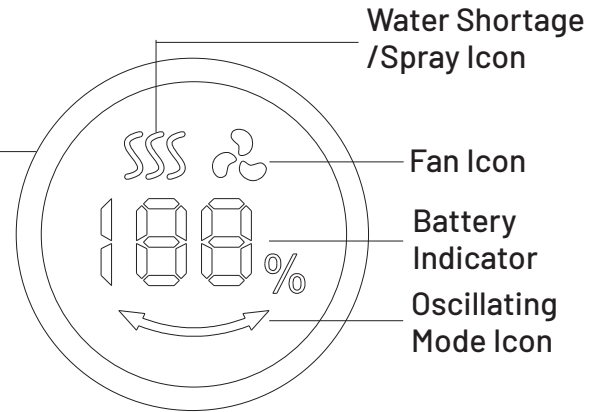
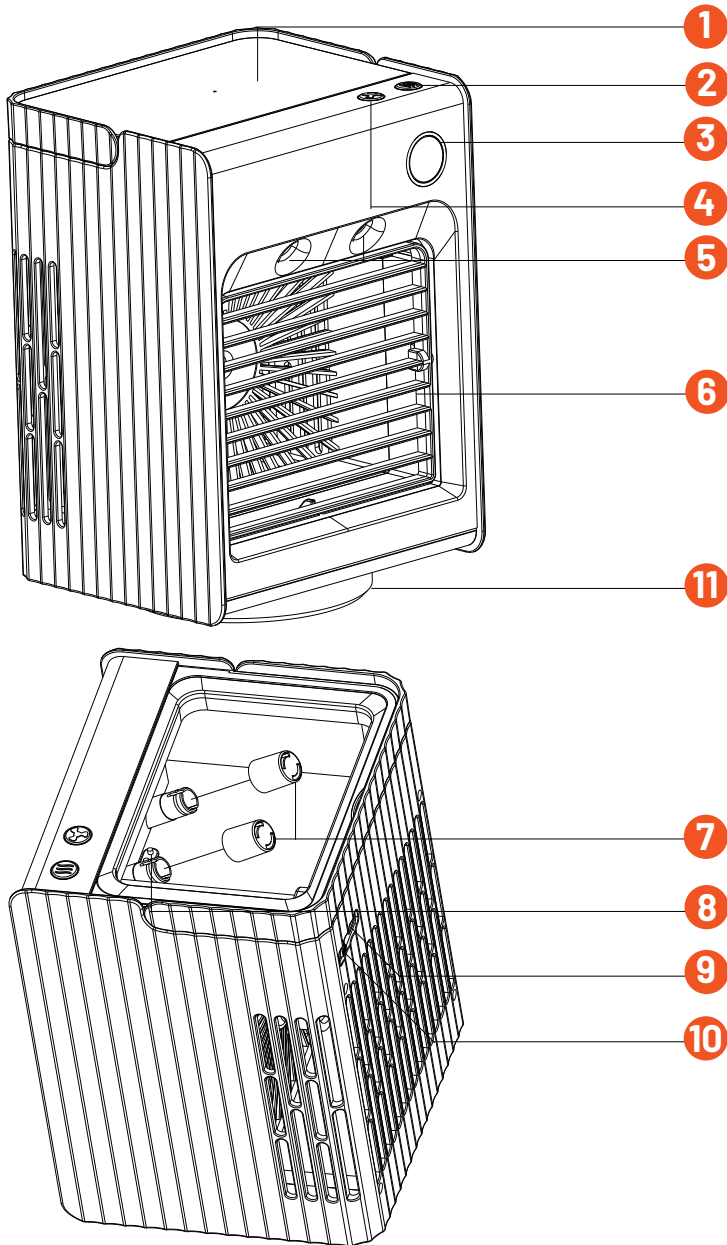
Feature

- 1. Portable Air Conditioning with Misting Cooling
- 2. Digital Display of Operational Status
- 3. Dual Mist Spray Outlets
- 4. 4000mAh Rechargeable Battery
- 5. Adjustable Fan Grill Orientation
- 6. 300mL Water Tank Capacity
- 7. Water Shortage Safety Feature
- 8. Automatic 120° Horizontal Oscillation
- 9. Integrated LED Night Light

Specifications

Product Name	Porodo Lifestyle Air & Mist Portable Cooling Fan with Night Light and Oscillation
SKU	PD-LSMFAN
Battery Capacity	4000mAh
Power	14.8W
Battery Voltage	3.7V
Input	DC 5V/800mAh+10 %
Charging Port	Type-C
Charging Time	6h
Speed Level	Speed 1: 1460RPM/Speed 2: 1960RPM/Speed 3: 2450RPM
Working Time	Speed I + Fan Only [Up to 15h]/Speed III + Fan + Mist + Oscillation + Light [1.5h]
Size	124×143×202mm
Weight	805g
Ice Cube Tray	Yes

Schematic View



- | |
|--------------------------|
| 1. Water Tank Cover |
| 2. Spray Button |
| 3. LED Indicator |
| 4. Fan Button |
| 5. Atomizer |
| 6. Adjustable Fence |
| 7. Tube |
| 8. Probe |
| 9. Type-c Charging Port |
| 10. Power-off Switch |
| 11. Oscillating Fan Base |

Instructions for Use

A. Fan Button

1. Click once to activate the fan at the first speed setting.
2. Each subsequent click increases the fan speed.
3. The fan turns off after the fourth click.

B. Night Light

Double-click the fan button initially to turn the LED night light on/off.

C. Oscillating Function

Press and hold the fan button to enable/disable the oscillating function.

D. Spray Function

1. Press the spray button once to activate continuous spray.
2. Press the spray button two times for intermittent spray. The spraying cycles includes two intervals: 3 seconds on and 2 seconds off.
3. Press the spray button three times to turn off the spray.

Note: The fan must be operating for this function to work.

E. Water Shortage Protection

If the water level falls below the sensor in the tank, all spray modes will automatically shut off to prevent damage.

F. Power Button

1. Press the "ON" button to turn on the device.
2. Press the "OFF" button to turn off the device.

G. Type-C Port

Use this port to charge the fan.

Indicator Guide

A. Fan Indicator

1. First Speed: The display shows "1" and the fan icon flashes slowly.
2. Second Speed: The display shows "2" and the fan icon flashes at a medium speed.
3. Third Speed: The display shows "3" and the fan icon flashes quickly.

B. Spray Mode Indicator

1. Continuous Spray: The spraying symbol remains constantly illuminated.
2. Intermittent Spray: The spraying symbol flashes.

C. Oscillating Function Indicator

When oscillation is active, the display will show left and right double arrows indicating that the oscillating function is enabled.

D. Power Indicator

When the product is being charged and used, the power level indicator will fluctuate between 1 -100 %. A full charge will indicate 100 %.

E. Low Battery Indicator

When the battery level falls below 10 %, the number 10 % will flash until the device is turned off. Before shutting down, the number 0 % will flash several times.

F. Water Shortage Indicator

When the water level is below what the anti-dry sensor in the water tank detects, a red spray icon will flash on the display for 10 seconds before the spray function is deactivated.

Charging

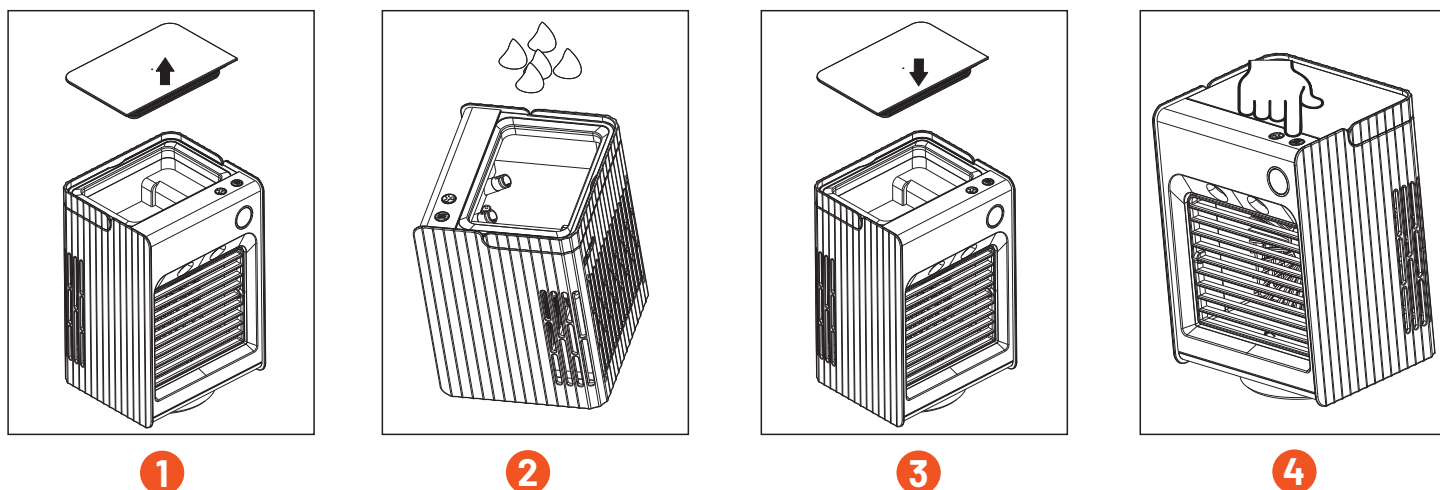
1. Charging Current: 800mA (± 10 %); full battery charge takes approximately 6 hours.
2. Battery Life:
1st speed: Approximately 15 hours (Fan only)
3rd speed: Approximately 1.5 hours (All functions active)
3. Pre-Use Charging: Please charge the product for more than 3 hours before initial use.
4. Maintenance Charging: It is advisable to charge the battery every 3 months to prevent damage and maintain functionality.
5. Long-Term Storage: When the product is not in use for extended periods, ensure it is stored in an environment with low humidity or at room temperature to avoid damage to its functions.

Attention

1. Ensure the product is adequately filled with water before use. Refrain from operating the humidifying function if there is no water in the tank.
2. Avoid adding essential oils, perfumes, or any chemical and medical substances as they may clog the atomizer plate.
3. The product is equipped with a low-water safety feature that automatically stops operation when water levels are too low. Make sure the water tank is filled to the designated maximum water line and activate the spray button to commence operation.
4. Do not wash the product directly with water. Instead, use a damp cloth for cleaning to avoid water ingress.

5. This product should not be operated by children under the age of 6 without adult supervision.
6. If the product has been idle for 1-2 days, thoroughly empty and clean the water tank before refilling it for use.
7. Avoid soaking the cotton filter in water for prolonged periods when the humidifier is not in active use, to prevent the development of odors.

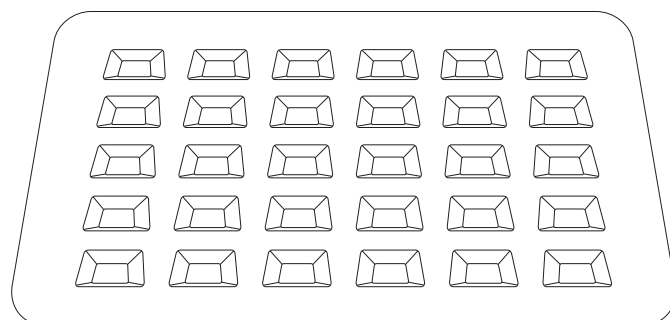
Replacing the Filter



1. Remove the Water Tank Cover: Slide the water tank cover upwards to remove.
2. Add Water to the Tank: Pour water into the tank up to the indicated fill line.
3. Replace the Water Tank Cover: Slide the cover back down into place securely.
4. Activate the Device: Press the function button to turn the device on.

Insert Ice Tray

To enhance cooling efficiency, fill the ice cube tray with water and place it in the refrigerator to form ice cubes. Once frozen, add the ice cubes to the water tank of the fan.



Package Contents

1. Portable Fan
2. Type-C Charger
3. Ice Cube Tray

Warranty

Products that you buy directly from our **Porodo** website or shop come with a 24-month warranty.

When you buy **Porodo** products from any of our approved sellers, you only get a 12-month warranty. If you want to extend this warranty, go to our website at **<https://porodo.net/warranty>** and fill out the form with your information. Don't forget to upload a picture of the product too. After we've checked and accepted your request, we'll send you an email to confirm that your product's warranty has been extended.

For more info, please check:

<https://www.porodo.net/warranty>

Contact Us

If you have any questions about this Privacy Policy, please contact us at:

info@porodo.net

Website: **porodo.net**

Service Support: **support@porodo.net**

Instagram: **[porodo](https://www.instagram.com/porodo)**