

PORODO



Porodo

PULSE Smartwatch with Earbuds

SKU: PD-PULSE

Table of Contents

Disclaimer	2
Features	2
Specifications	3
Product Overview	4
Charging and Activation	4
Power On/Off	5
App Connectivity	5
Binding the Watch	5
Interface Guide	6
Function Description	6
Pairing Earbuds with Phone	8
Pairing Earbuds with Each Other	8
Earbud Touch Button Functions	9
Usage Precautions	10
Warranty	11
Contact Us	11

Disclaimer

This product is not a medical device. Smartwatches and their applications should not be used for diagnosing diseases, providing therapeutic treatment, or as a preventive healthcare measure. Before modifying your exercise habits or sleep patterns, consult a medical professional to avoid potential injuries. The manufacturer reserves the right to modify and improve the functional descriptions in this user guide and update the content at any time without prior notice. This guide is intended for informational purposes only. Before using the product, please carefully read this User Manual to guarantee correct usage and keep it secure for future reference.

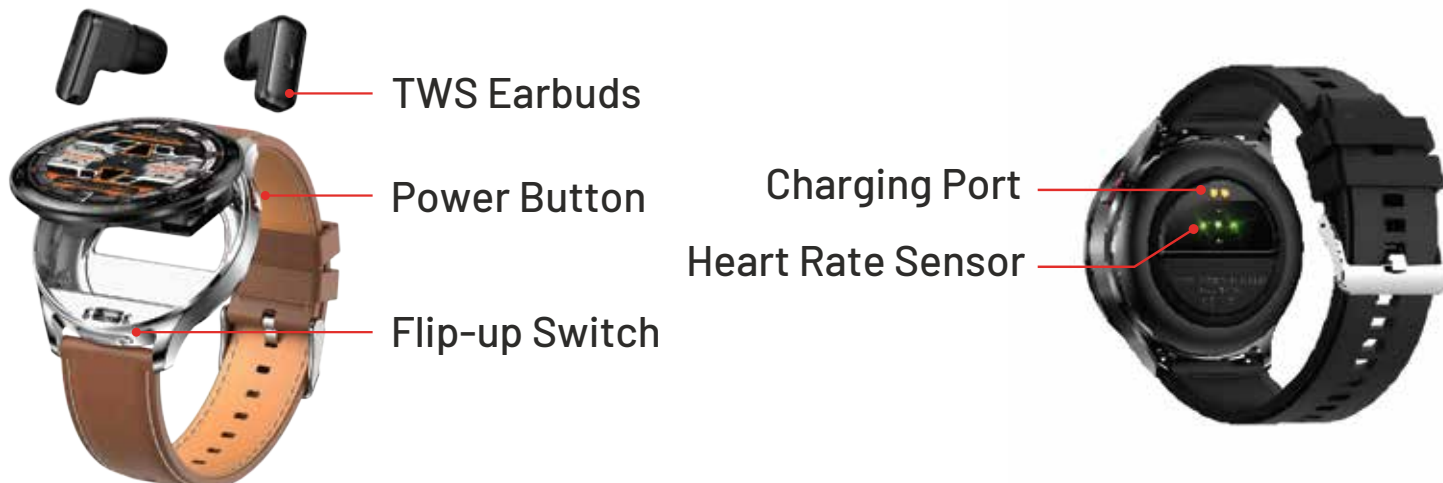
Features

- 1.** The watch includes a sleep monitoring function that tracks sleep patterns to help improve your sleep quality.
- 2.** Equipped with a calorie tracking feature, the watch calculates and displays the number of calories burned throughout the day.
- 3.** A built-in heart rate monitor provides real-time feedback on your heart rate during various activities.
- 4.** Make and receive phone calls directly from your watch via Bluetooth connectivity.
- 5.** Stream and control music directly from your watch, thanks to its integrated Bluetooth music player.
- 6.** This feature counts your steps, helping you reach your fitness goals by keeping track of your daily activity.
- 7.** The watch features a 1.4-inch display, offering clear and convenient access to all functions.
- 8.** Bluetooth calling capability allows you to handle calls hands-free without needing to access your smartphone.
- 9.** The watch is IP67 rated, ensuring it is resistant to water and dust, suitable for everyday use.
- 10.** The integrated earbuds offer up to 10 hours of playtime on a single charge.
- 11.** The smartwatch can run for up to 5 days on a single charge, minimizing the need for frequent recharging.

Specifications

Product Name	Porodo PULSE Smartwatch with Earbuds
SKU	PD-PULSE
Screen Size	1.39"
Resolution	360×360 IPS
Battery Type	Lithium-ion polymer battery
Watch Battery	3.8V/300mAh
Chipset	JL7012F6
Earbud Battery	3.7V/25mAh
RAM	128KB+16KB
Earbud Speaker	Ø6mm /F6L16* 2
Earbud connection Range	Up to 25m (No hindrance)
Bluetooth Version	BT 5.0
App Name	Da Fit
Watch Device Name	PULSE Watch
Earbud BT Name	PULSE TWS
Recharge Time	4H
Earbud Operating Time	Up to 10H
Waterproof	IP67
Compatibility	Android 5.0 and above, iOS 10.0 and above
Charging	Micro USB
Dimensions	Φ49mm×14mm
Weight	68g
Watch Sensor	G-Sensor/Heart Rate/Blood Pressure Sensor
Calories Count	Supported
Camera Remote-Control	Supported
BT Call	Supported
BT Music Player	Supported
Time Sync	Supported
Anti-lost	Supported
Redial	Supported
Sleep monitor	Supported
Steps	Supported
Heart rate	Supported
Bluetooth Headset	Supported
Blood pressure	Supported
Alarm	Supported
Siri	Supported
Supported Languages	Supported Languages: Arabic, Bulgarian, Chinese, Czech, Danish, Dutch, Finnish, French, German, Hungarian, Italian, Japanese, Korean, Norwegian, Polish, Portuguese, Romanian, Russian, Spanish, Swedish, Ukranian

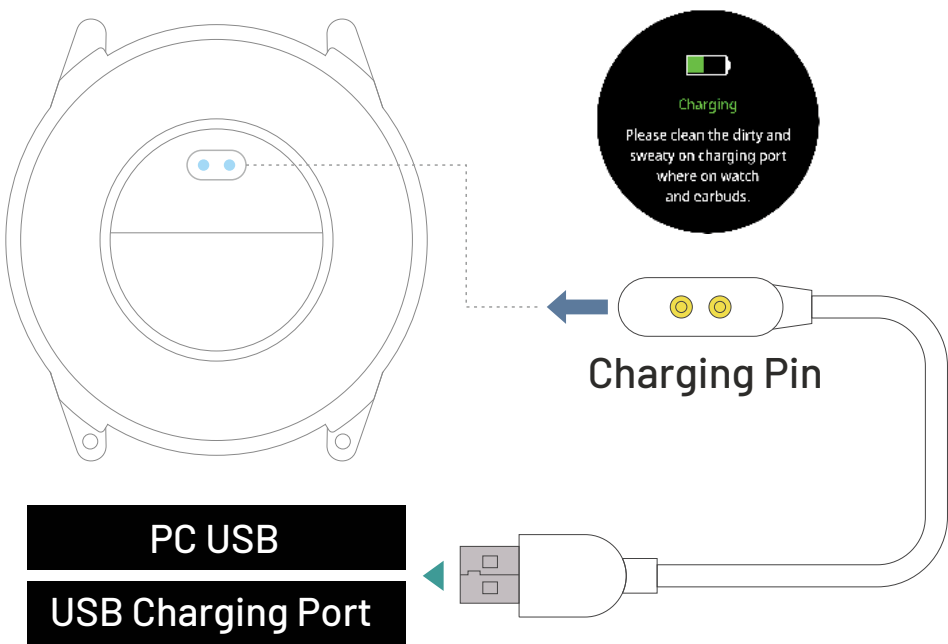
Product Overview



Note: The heart rate sensor requires full contact with the skin to accurately measure heart rate, blood pressure, and blood oxygen levels.

Charging and Activation

Before you use the watch for the first time, it is essential to charge it for more than 3 hours to ensure that the battery is fully activated. Utilize the provided magnetic charger by attaching it to the metal contacts on the back of the watch. Then, connect the other end of the charger to a USB charging head or a computer USB port.



Charging Schematic

Power On/Off

Switch On: Long press the power switch to turn on the device, or simply connect it to a charger to activate.

Switch Off: Long press the power button again to turn off the device.

App Connectivity

A. Download

Scan the following QR code to download "Da Fit" app.



B. Installation

Follow these steps to install the app:

1. Open the mobile client to set up your personal information.
2. Switch to the 'Devices' page and click 'Bind Devices'.
3. Select your device from the list of scanned devices.
4. Binding is now complete.

C. Additional Settings

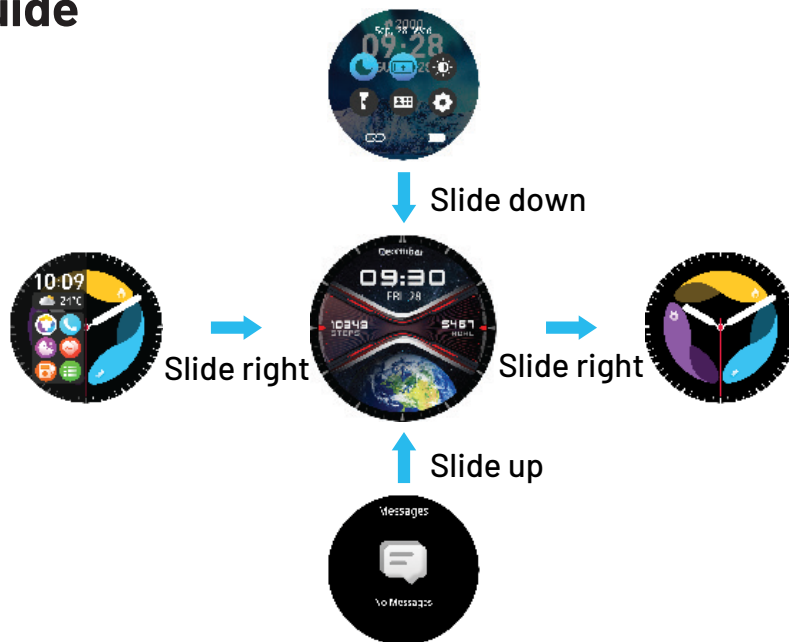
In the settings menu, you can check the MAC address under the 'About' section to confirm that your watch is successfully bound. Every time you open the client, the watch will automatically connect to your mobile phone. Data synchronization can be performed by scrolling down on the client data page.

Binding the Watch

Please select your device from the list: search for the "PULSE Watch" device and click on it to bind. Ensure that you fully charge the device when you use it for the first time.



Interface Guide



Function Description

1. Activity Information



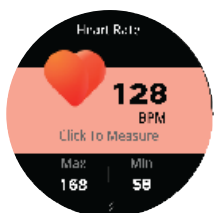
The watch tracks and displays the number of steps you take each day, along with the calories burned and distance covered. More comprehensive analysis and data logs can be accessed through the app.

2. Sleep Monitoring



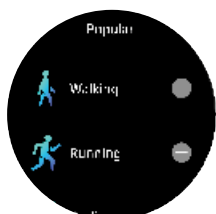
The watch records and displays the total hours of sleep during the night, including periods of deep sleep and light sleep. Refer to "Da Fit" App for a more details and data logs.

3. Pulse Rate

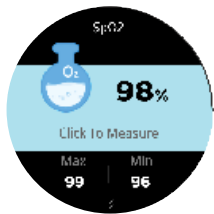


To check your current heart rate, tap the heart rate icon. This function allows for the immediate measurement of your heart rate. Refer to "Da Fit" App for a more details and data logs.

4. Exercise Tracking



The watch supports a variety of exercise modes, including walking, running, cycling, basketball, football, badminton, and jumping rope. Detailed analysis and data logs for your workouts can also be viewed in the "Da Fit" app.



5. Oximetry

Tap on the oximetry icon to measure the current blood oxygen level. For more in-depth analysis and data logging, refer to the client application.



6. Weather Information

The weather page displays current weather conditions, air quality, and the forecast for tomorrow. To access weather information, the watch must be connected to and synced with the app. If the watch remains disconnected for an extended period, the weather information will not update.



7. Push Messages

The watch can receive and display notifications sent from your mobile phone. The option to enable or disable notifications can be adjusted in the app. The Watch Messages page archives a record of recent messages received.



8. Camera Control

When connected to a mobile phone, the watch can be used as a remote control for the mobile phone's camera. After activating the camera on your phone, tap on the watch's camera control page to trigger the phone's camera shutter. The delay before the photo is taken can be adjusted to 0, 3, or 10 seconds.



9. Smart Alarm Clock

Smart alarms for the watch can be configured via the client. Up to three alarms can be set. The watch will display the alarm icon and vibrate at the specified time.



10. Other Functions

The watch includes several additional features: Silent mode, brightness adjustment, the ability to restore factory settings, and a shutdown operation.



11. Music Control

You can manage your mobile phone's music playback via the music control interface. This includes playing/pausing music, skipping to the previous or next song, and adjusting the volume.



12. Headset Status

Monitor the charging status of the headset. This feature includes headset removal, charging indications, and displays three states of full charge.

Pairing Earbuds with Phone

1. To pair the earbuds, remove it from the watch host.
2. You will then hear a boot tone.
3. Open the Bluetooth settings on your mobile phone and find the corresponding Bluetooth name "PULSE TWS" to establish the connection.

Note:

Removing the headset from the watch's main body will automatically switch it on and pair it with the connection. In this scenario, if the earbuds are disconnected from the mobile phone or is not connected during use, you will need to manually reconnect it to Bluetooth. In the mobile phone's Bluetooth settings, if a previously connected Bluetooth model is listed, remove it. Then, search for Bluetooth "PULSE TWS" to connect.

4. Headset Pairing: If only one of the earbuds emits sound, you need to pair the earbuds with each other.

Pairing Earbuds with Each Other

1. Press and hold both headphones for 6 seconds to turn off the power.
2. Long press both headphones simultaneously to turn them on. This will cause the headphone lights to flash alternately.

Note: Ensure your hand does not touch the touch button of the headphones.

3. After both lights have started flashing, press each headphone seven times.
4. At the end of the seventh press, both headphones will automatically turn off.

5. Place the headphones back into the watch compartment and remove them simultaneously.
6. Upon removal, only one of the headphone lights should be on, indicating that the watch is turned on. If only one light remains on, it confirms that the headphones are successfully paired.

Earbud Touch Button Functions

The middle surface of the headset is a touch-sensitive control panel. This can be used to answer or end calls, control music playback including skipping tracks or adjusting the volume, and activate the AI voice assistant.



1. Call Management

When the headset detects an incoming call while docked in the watch, it will automatically connect the call upon being removed.

2. If the headset remains in the watch for an extended period, incoming calls must be answered manually.

To answer a call: double-tap the touch button to answer.

To end a call: double-tap again to hang up.

3. You can also end the call by placing the earbuds in the watch. If the call is ended by replacing the headset in the watch, the earbuds will turn off.

Note: In case the call was not disconnected despite using the above protocol, navigate to your phone to manually end the call.

2. Music Playback Control

To pause or play music: Double-tap the touch button.

For skipping to the previous or next song: Press and hold the button for 2 seconds.

To adjust the volume: Triple-tap the touch button.

3. Voice Assistant

Once the headset is connected to Bluetooth, tap the touch button to activate your mobile phone's voice assistant (Siri for iPhones and the Google Assistant for Android phones). This allows you to use voice commands to make calls, check the weather, access navigation maps, and more.

Note: To use the voice assistant to function, the mobile phone must be in either the standby mode or the main interface should be active.

Usage Precautions

1. The measurements provided by this product are for reference only and are not intended for medical use. Always follow your doctor's advice and do not rely on this device for self-diagnosis or treatment.
2. This product has an IP67 waterproof rating. It is not suitable for deep diving or extended submersion in water. Additionally, it is not protected against hot water, as steam can damage the device.
3. Please exercise caution when resetting to factory settings, as this will erase your APP content settings and watch history data.
4. When the watch's battery level is below 20 %, the earphones may not charge normally. If the earphones are placed back into the charging compartment, the indicator light may not illuminate. You will need to manually turn off the headphones or connect the watch to a charger.
5. Regularly clean any oil and water stains from the charging port of the headset and remove debris from the headset compartment to ensure optimal functionality.

Attention: Maintain cleanliness by regularly removing debris and moisture from the headphone compartment of the watch.

Warning: If you have not used this product for an extended period, please ensure it is fully charged at least once a month to maintain battery health.

Warranty

Products that you buy directly from our **Porodo** website or shop come with a 24-month warranty.

When you buy **Porodo** products from any of our approved sellers, you only get a 12-month warranty. If you want to extend this warranty, go to our website at **porodo.net/warranty** and fill out the form with your information. Don't forget to upload a picture of the product too. After we've checked and accepted your request, we'll send you an email to confirm that your product's warranty has been extended.

For more info, please check:
porodo.net/warranty

Contact Us

If you have any questions about this Privacy Policy, please contact us at:
info@porodo.net

Website: **porodo.net**

Service Support: **support@porodo.net**

Instagram: **[porodo](https://www.instagram.com/porodo)**