

PORODO



Porodo

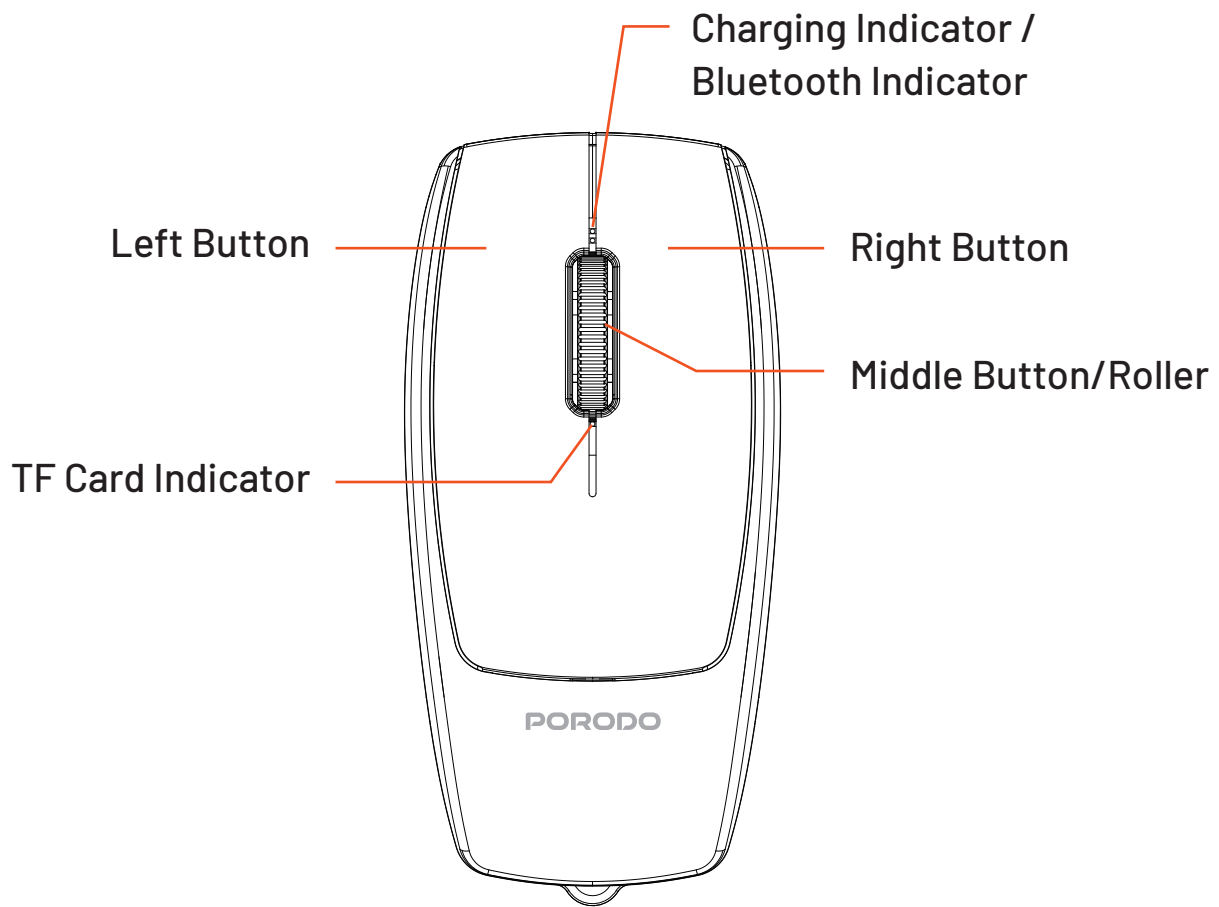
1600DPI Wireless Mouse with Card Reader

SKU: PDM109

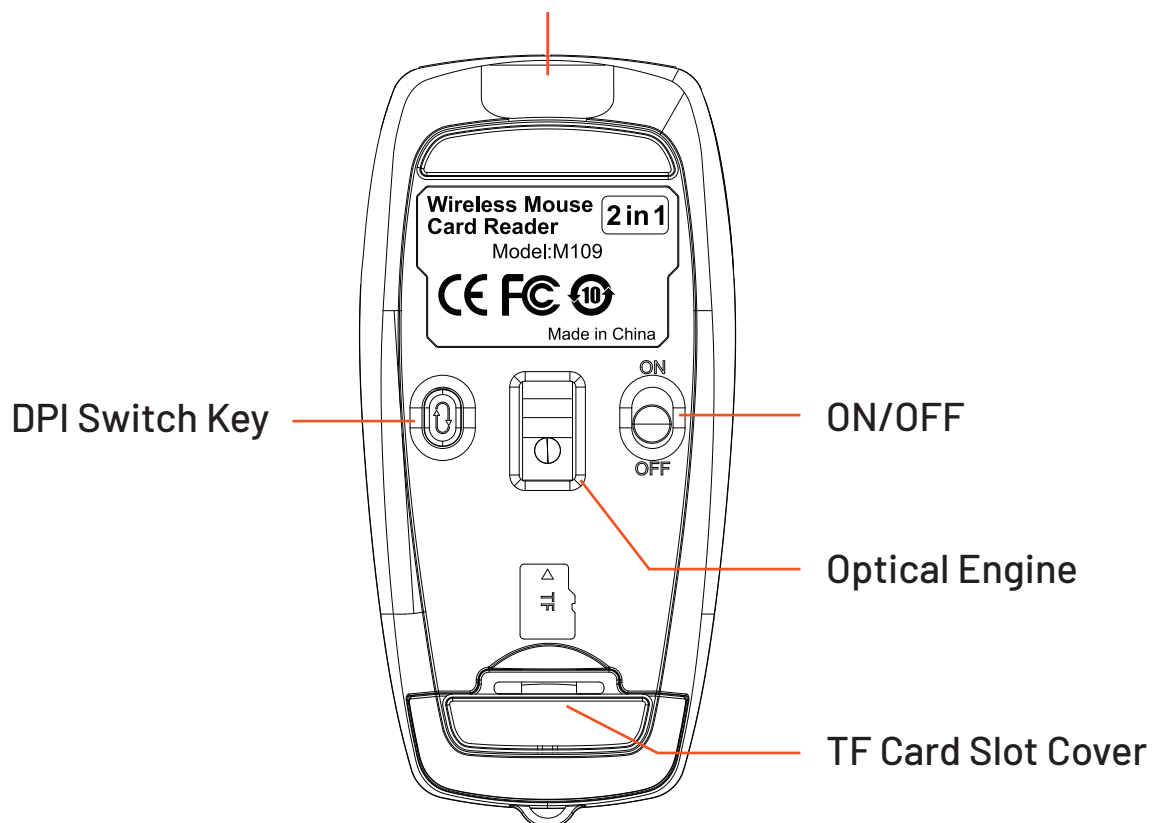
Table of Contents

Product Overview	2
Bluetooth Connection Guide	3
Instructions for Use	3
Charging Method	4
Specifications	4
Precautions for Use	5
LED Indicator Instructions	6
TF Card Function Description	7
Battery Usage Warning	8
Laser and LED Product Information	8
Safe and Proper Usage	9
Environmental Disposal	10
Warranty	11
Contact Us	11

Product Overview



Type-C Charging Port



Bluetooth Connection Guide

1. Slide the power switch located at the bottom of the mouse to the "ON" position. The Bluetooth indicator light will turn on and blink, signaling that the mouse has entered pairing mode.
2. Open the Bluetooth settings on your tablet, computer, or mobile phone, and select the "PDM109" from the list of available devices. The blue light on the mouse will stop blinking and stay on, indicating that the connection is successful.

Instructions for Use

1. Once paired, move the mouse or press the left and right buttons to use the device normally.
2. Lift the cover of the TF card slot located on the tail of the mouse.
3. Insert the TF card: Gently insert the TF card into the slot in the correct orientation.
4. Use the TYPE-C data cable to connect the mouse to your computer, tablet, or mobile phone. Insert one end of the cable into the mouse and the other into your device.
5. The TF card indicator light will blink rapidly while the data is being read. Once the data is successfully read, the light will remain steady.
6. Open the disk on your computer, tablet, or mobile phone to access the mobile disk for reading and writing.
7. The disk can be read and written, and the indicator light will blink quickly while data is being written.
8. After use, right-click on the mobile disk icon and select "Eject" to safely remove the TF card. Press the TF card eject button to remove the card, close the TF card slot cover, and resume using the mouse normally.

9. Note:

Maximum TF card capacity: 2TB

Average read/write speed: 20MB/s

Charging Method

To charge the mouse, it is recommended to use the USB interface on your computer. The charging indicator light will stay on during the charging process and will turn off once the battery is fully charged.

Specifications

Battery Capacity	120mAh
DPI Levels	800 ,1200 ,1600
Connectivity	Bluetooth
Bluetooth Version	5.1
Effective Range	10m
Material	ABS
Product Size	22 x 38 x 78mm

Product Weight	30g
Model Number	PDM109

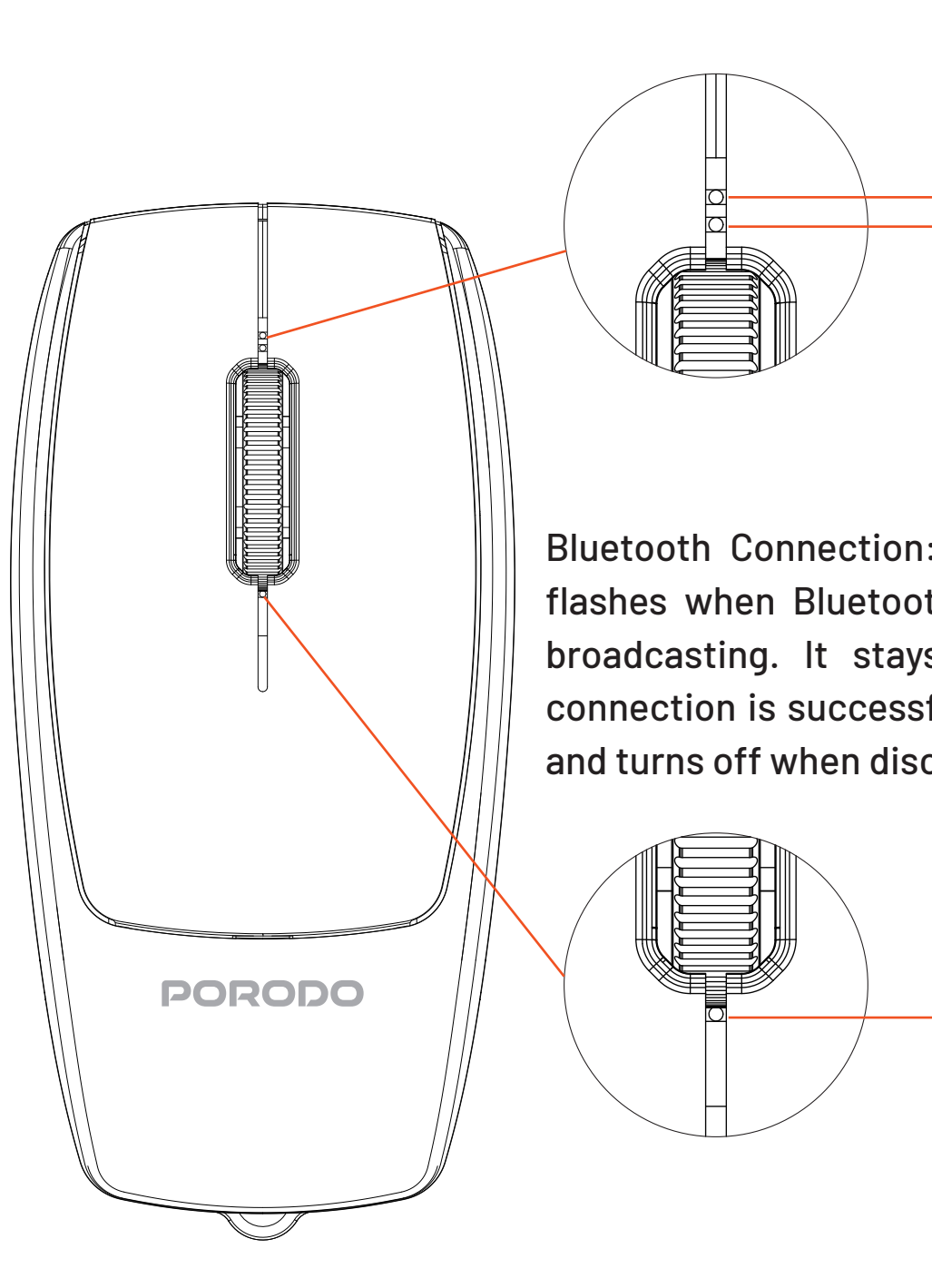
Precautions for Use

1. If the mouse cursor moves slowly, check the battery level and charge the mouse as needed.
2. If the mouse cannot connect, ensure the power switch on the bottom of the device is turned on and select the appropriate connection mode.
3. For prolonged periods of non-use, manually turn off the mouse to conserve battery power.
4. If the mouse is left unused for an extended period, it will automatically enter sleep mode. To wake it up, simply move the mouse or press any button.
5. Do not attempt to disassemble or repair the product, as doing so may cause damage.



LED Indicator Instructions

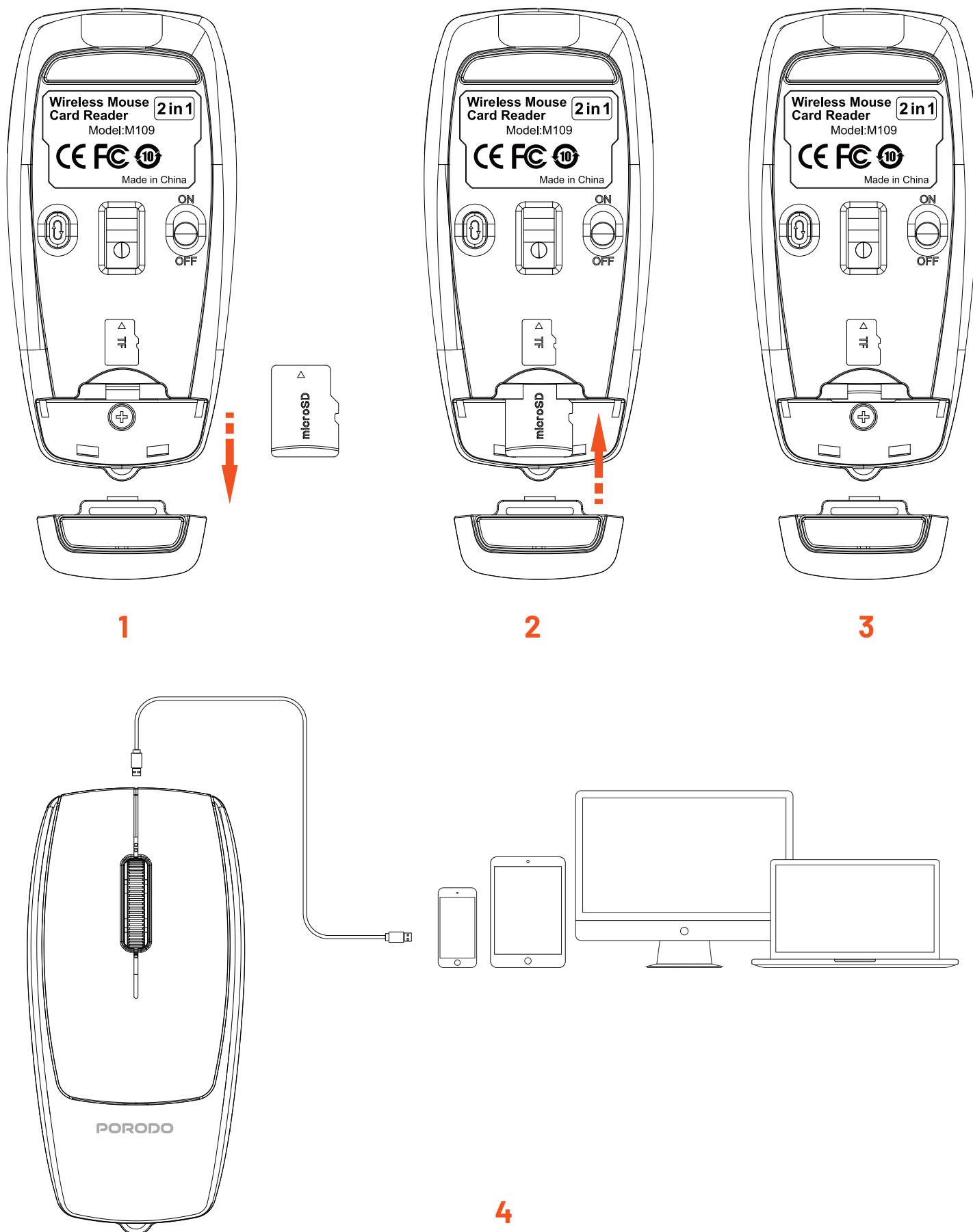
Charging: The green light remains steady while charging. Once the battery is fully charged, the light will turn off.



Bluetooth Connection: The blue light flashes when Bluetooth is active and broadcasting. It stays on when the connection is successfully established and turns off when disconnected.

TF Card Reading/Writing: The blue light flashes quickly while reading or writing data from the TF card. Once the process is complete, the light remains steady.

TF Card Function Description



1. Open the TF Card Slot Cover: Lift the cover to access the TF card slot.
2. Insert the TF Card: Insert the TF card into the slot, ensuring it's pushed all the way in.
3. **Note:** If you need to remove the TF card, press it again to eject.
4. Connect to a Device: Use the Type-C interface to connect the mouse to your device. The TF card indicator light will blink, showing the mouse is reading the TF card data. Once the connection is successful, the light will stay on.

Battery Usage Warning

Important Notice: Improper battery handling may cause leakage, explosion, or personal injury. Always use the recommended battery type for your device.

1. Mishandling rechargeable batteries can cause burns or chemical injuries. Do not expose batteries to conductive materials or liquids, and avoid temperatures above 54°C (130°F).
2. Never leave a battery discharged or unused for long periods. Do not short-circuit batteries, and avoid charging batteries showing signs of leakage, discoloration, deformation, or other abnormalities.
3. Batteries should be kept out of the reach of children. Always dispose of batteries according to local regulations, and place them in appropriate recycling bins if no regulations are available.

Laser and LED Product Information

a. Class 1 Laser Product

This product complies with international standard IEC / EN 60825-1: 2014 for Class 1 laser products and meets the requirements of 21 CFR 1040.10, with a maximum output of 716 µW CW.

Emission Wavelength: 832-865 nm

Operating Temperature: 0°C to 40°C

Warning: Avoid prolonged direct contact with laser apertures, as this may cause burns.

b. Class 1 LED Product

This product also contains a Class 1 LED.

Operating Temperature: 0°C to 40°C

c. Class 1M Laser Product

This device complies with international standard IEC / EN 60825-1 : 2014 for Class 1M laser products and meets the requirements of 21 CFR 1040.10, with a maximum output of 1.4 μ W CW.

Wavelength Range: 832-865 nm

Operating Temperature: 0°C to 40°C

Warning: Viewing the laser output at a distance of 100 mm using optical magnifying instruments may cause eye injury.

Safe and Proper Usage

- 1.** Do not disassemble or modify the product, except for battery removal and replacement.
- 2.** Avoid attempting to repair the product, as doing so may expose you to radiation hazards.
- 3.** Do not point infrared or laser beams at anyone's eyes or reflective surfaces.
- 4.** Avoid submerging the product in water or exposing it to extreme heat or humidity.
- 5.** If exposed to temperatures outside the specified range, disconnect the device until it returns to a safe operating temperature.
- 6.** Only use the supplied power adapter. Do not modify the power supply or charge the product during thunderstorms.
- 7.** Use this product only with listed/certified ITE computers and accessories.
- 8.** Not intended for children under 14 years old. Prolonged use may lead to

repetitive strain injuries (RSI), including pain, numbness, swelling, or stiffness in hands, wrists, arms, shoulders, neck, or back. Consult a healthcare professional if symptoms occur.

9. Under normal conditions, this product does not pose significant safety hazards. However, should the product malfunction, please contact support for further assistance or repairs.

10. Unauthorized modifications will void your rights to operate this device and the associated warranty.

Environmental Disposal

1. Do not dispose of the product with regular household waste.

2. Dispose of batteries, electronic devices, and electrical equipment at designated collection points to minimize environmental impact.



Warranty

Products that you buy directly from our **Porodo** website or shop come with a 24-month warranty.

When you buy **Porodo** products from any of our approved sellers, you only get a 12-month warranty. If you want to extend this warranty, go to our website at **porodo.net/warranty** and fill out the form with your information. Don't forget to upload a picture of the product too. After we've checked and accepted your request, we'll send you an email to confirm that your product's warranty has been extended.

For more info, please check:
porodo.net/warranty

Contact Us

If you have any questions about this Privacy Policy, please contact us at:
info@porodo.net

Website: **porodo.net**

Service Support: **support@porodo.net**

Instagram: **porodo**